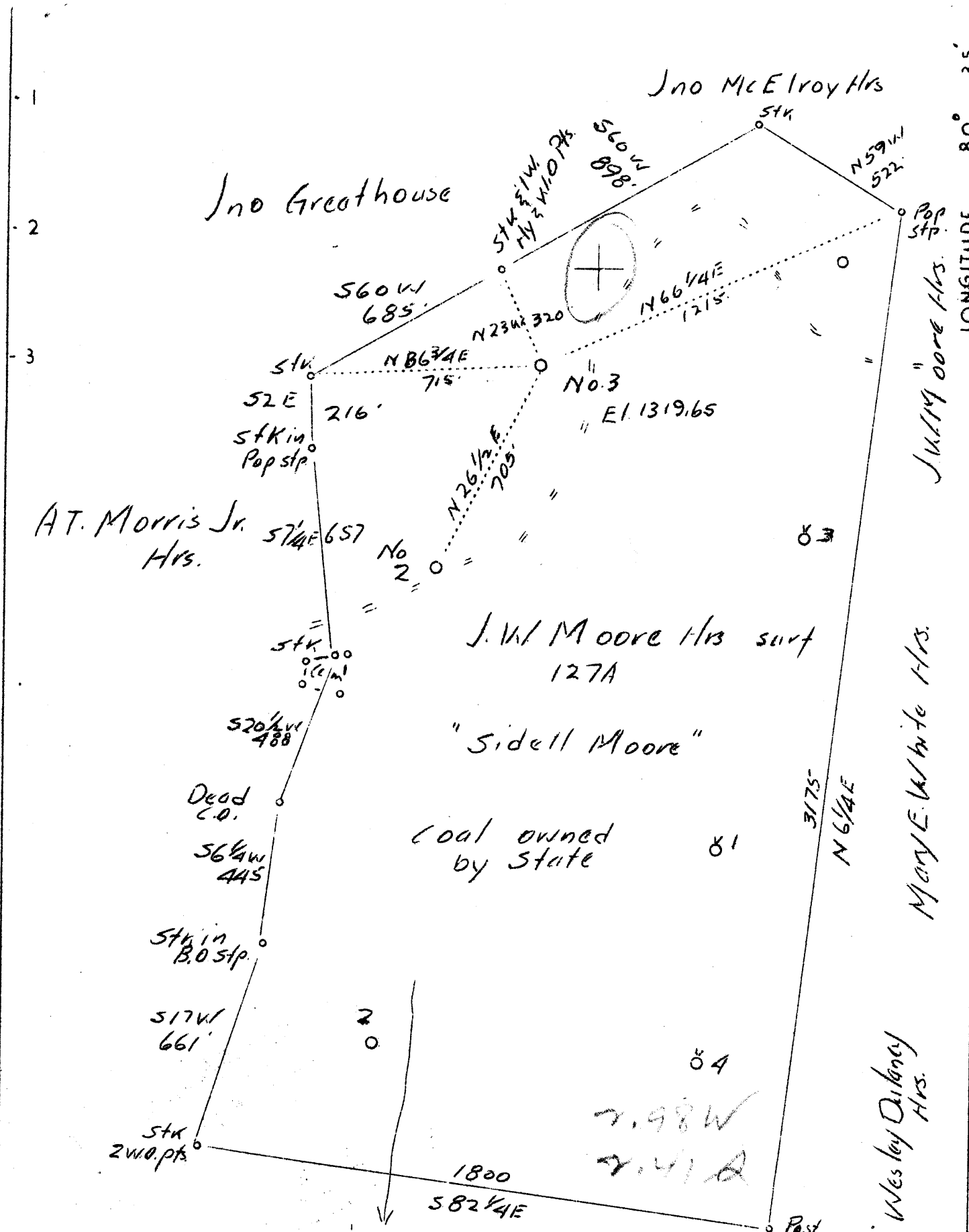


LATITUDE 39° 40'

LONGITUDE 80° 35'



Company	South Penn Oil Co.
Address	411 Seventh Ave., Pittsburgh, Pa.
Farm	J.W. Moore
Tract	Acres 129 Lease No. 30335
Well (Farm)	No. 3 Serial No.
Quadrangle	Littleton C
County	Wetzel
District	Center
Engineer	E.C. Tabler
Engineer's Registration No.	
File No.	Drawing No.
Date	Aug. 18, 1937 Scale 1"-400'

STATE OF WEST VIRGINIA
 Department of Mines
 OIL AND GAS DIVISION
 CHARLESTON

WELL LOCATION MAP

File No. WVET-166

+ Denotes location of well on United States Topographic Maps, scale 1 to 62,500, latitude and longitude lines being represented by border lines as shown.

— Denotes one inch spaces on border line of original tracing.

WEST VIRGINIA DEPARTMENT OF MINES

OIL AND GAS DIVISION

WELL RECORD

Permit No. Wet-166

Oil Well

Littleton Quad.

CASING & TUBING

Company	South Penn Oil Co.	Cond.	18	
Address	411 Seventh Ave., Pittsburgh, Pa.	10	1366	Pulled
Farm	J.W. Moore Acres 129	8 1/4	1755	Pulled
Location	Not given	6 5/8	2425	
Well No.	3	5 3/16	3076	
District	Center	Elev. 1319.65	2	3280
Surface	J.W. Moore Hrs., c/o W.L. Moore,			
Address	Wileyville, W.Va.			
Mineral	Same			
Drilling	Commenced Sept. 8, 1937			
	Completed Nov. 30, 1937			
Date Shot	Dec. 8, 1937	Depth 3275-3282		
Oil	15 bbls. ,1st 24 hrs.			

Formation Color ^{Hor} 5 Top Base Result Formation Color ^{Hor} 5 Top Base Result

✓ Pitts. Coal		1245	1250						
✓ Murphy Sand		1358	1385						
✓ Little Dunk. Sand		1612	1628						
✓ Big Dunkard Sand		1730	1755						
✓ Gas Sand		1775	1802						
✓ 2nd Gas Sand		1825	1900						
✓ Salt Sand		1918	1950						
✓ 2nd Salt Sand		1985	2040	Water					
✓ 3rd Salt Sand		2052	2270	1995					
✓ Little Lime		2402	2409	1 blr.					
✓ Pencil Cave		2409	2413	pr. hr.					
✓ Big Lime		2413	2462						
✓ Big Injun Sand		2462	2705						
✓ Berea Grit		2830	2860	Water					
✓ Fifty Foot Sand		3053	3060	2084					
✓ Stray Sand		3265	3282	H.F.					
✓ Slate		3282	3284						
✓ Gordon Sand		3284	3297	Gas					
TOTAL DEPTH			3300	2509-					

2462
2402
60

2462
2713
49

2413
1320
1093

2413
110
2523
1320
1203

Oil &
Gas
3276 -
3281