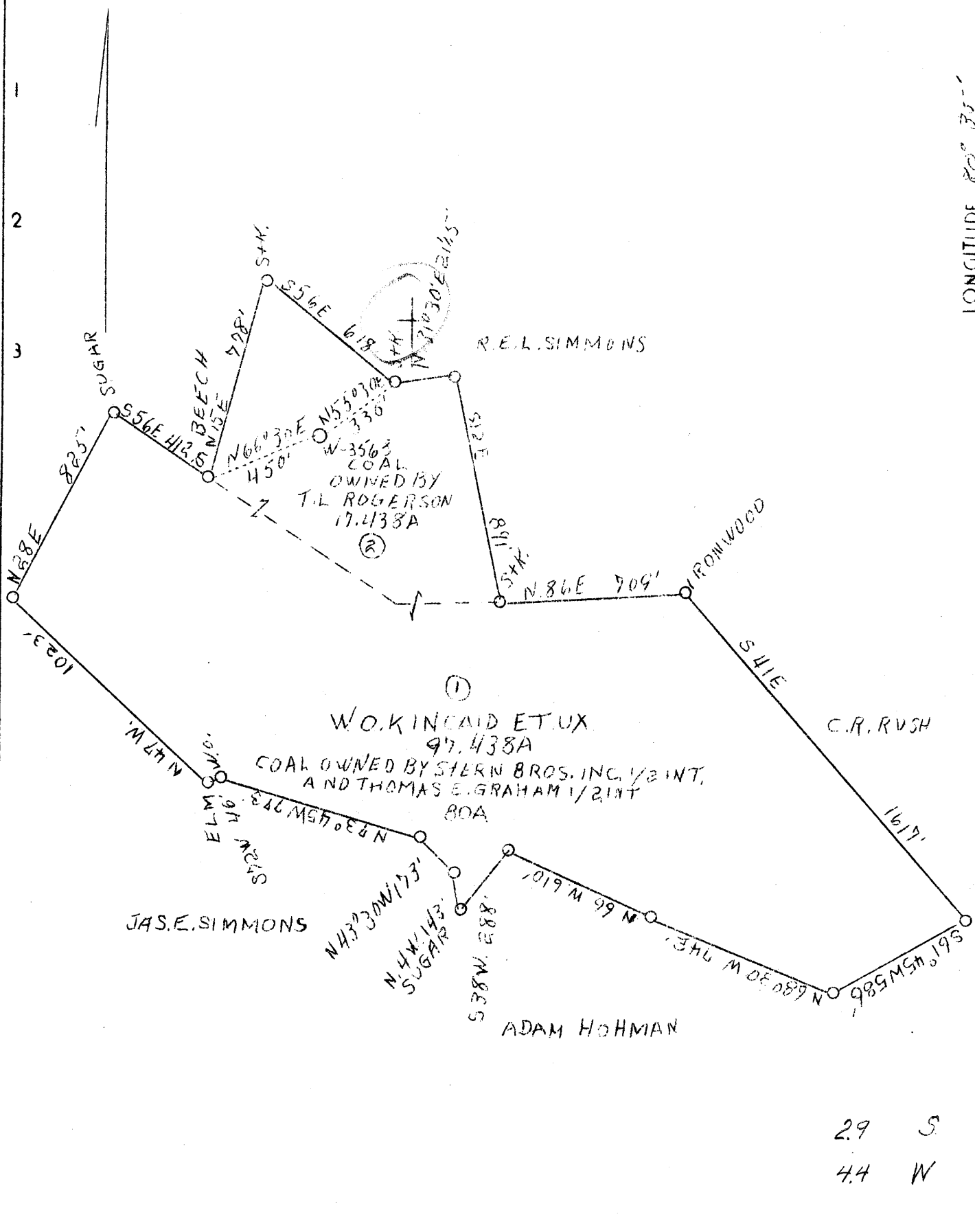


LATITUDE 39° 45'

LONGITUDE 80° 35'



29 S
4.4 W

Company	The Manf. Light & Heat Co.	<p>STATE OF WEST VIRGINIA Department of Mines OIL AND GAS DIVISION CHARLESTON</p> <p>WELL LOCATION MAP File No. <u>Wet-179</u></p> <p>Denotes location of well on United States Topographic Maps, scale 1 to 62,500, latitude and longitude lines being represented by border lines as shown.</p> <p>Denotes one inch spaces on border line of original tracing.</p>
Address	800 Union Trust Bldg., Pittsburgh, Pa.	
Farm	W.O. Kincaid et ux	
Tract	2 Acres 97.438 Lease No. 14803	
Well (Farm) No.	1 Serial No. 3563	
Elevation (Spirit Level)	1201'	
Quadrangle	Littleton <u>NC</u>	
County	Wetzel District Proctor	
Engineer	Fred H. Sochor	
Engineer's Registration No.		
File No.	Drawing No. <u>Y-7-973</u>	
Date	May 3, 1938 Scale 1"-500'	

6-6 36

WEST VIRGINIA DEPARTMENT OF MINES

OIL & GAS DIVISION

WELL RECORD

Permit No. Wet-179

Gas Well

Littleton N. W. Quad.

CASING & TUBING

Company	The Mfg. Light & Heat Co.	Size	Used	Left in
Address	800 Union Tr. Bldg., Pgh. Pa.	13 Con.	16	16
Farm	W. O. & M. Kincaid ACRE'S 97	10	324-8	324-8
Well No.	3563 ELEV. 1201	8-1/4	1481-7	1481-7
District	Proctor County Wetzel	6-5/8	1980-0	1980-0
Surface	W. C. Kincaid, Bebee, W. Va.	No Packer		
Mineral	The Mfgs. Light & Heat Co.			
Drilling commenced	July 25, 1938			
Drilling completed	August 19, 1938	COAL ENCOUNTERED		
Shot	Not shot	394 ft.	12 in.	
Open Flow	None taken	680	12	
Volume	6,500,000 c. f.	743	24	
Rock Pressure	245 lbs. 48 hrs.	880	24	
Oil	None	980	24	
Salt Water	1808-1817			

Formation	Color	H-S	Top	Base	Result	Formation	Color	H-S	Top	Base	Result
Clay	red	s	0	10		Slate Shells	white	med	1300	1330	
Shells	red	s	10	13		Sand			1330	1345	
Red rock	dark	s	13	25		Shale	black	s	1345	1350	
Slate	gray	s	25	75		Shells	gray	h	1350	1360	
Sandy shale			75	100		Slate	dark	s	1360	1385	
Red rock	red	s	100	145		Littleton	white	h	1385	1418	
Lime	blue	h	145	160		Shale	black	s	1418	1455	
Slate	white	s	160	190		Pink rock	pink	s	1455	1465	
Lime	white	h	190	225		Big Bank	gray	med	1465	1540	
Red rock	red	s	225	240		Shale	black	s	1540	1580	
Lime	white	h	240	255		Lime	white	s	1580	1595	
Slate	white	s	255	265		Slate	black	s	1595	1605	
Sand Lime	white	s	265	300		Gas Sand	white	med	1605	1630	
Slate	dark	s	300	335		Shale	dark	s	1630	1650	
Lime	white	h	335	375		Sl. & Shells	dark	s-h	1650	1725	
Slate	white	s	375	394		1st Salt S.	gray	h	1725	1755	
Coal	black	s	394	395		Shale	dark	s	1755	1780	
Lime	dark	s	395	410		2nd Salt S.	white	h	1780	1826	
Red rock	red	s	410	440		Slate shells		med	1826	1960	
Lime	white	h	440	455		3rd Salt S.	dark	h	1960		
Slate	blue	s	455	465		Maxon sand			1985	2000	
Lime shells	blue	h	465	485		Total depth				2000	
Slate shells	light	s	485	600		Salt					
Slate	white	s	600	620		Gas 1990-2000					
Lime shells	white	h	620	680							
Coal	black	s	680	681							
Slate & Shells	white	h	681	710							
Red rock	red	s	710	735							
Lime	white	h	735	743							
Coal	black	s	743	745							
Shale	black	s	745	755							
Lime	white	h	755	880							
Coal	black	s	880	882							
Lime	white	s	882	980							
Coal Ph	black	s	980	982							
Lime	white	h	982	1030							
Red rock	red	s	1030	1040							
Shells	white	h	1040	1050							
Red Rock	red	s	1050	1060							
Shells	gray	h	1060	1065							
Lime	white	h	1065	1085							
Slate		med	1085	1095							
Red rock	red	s	1095	1105							
Lime	white	h	1105	1110							
Red rock	red	s	1110	1170							
Sl. & Shells			1170	1205							
Red rock	red	s	1205	1230							
Slate	white	h	1230	1250							
Shale	dark	s	1250	1290							
Lime	white	h	1290	1300							