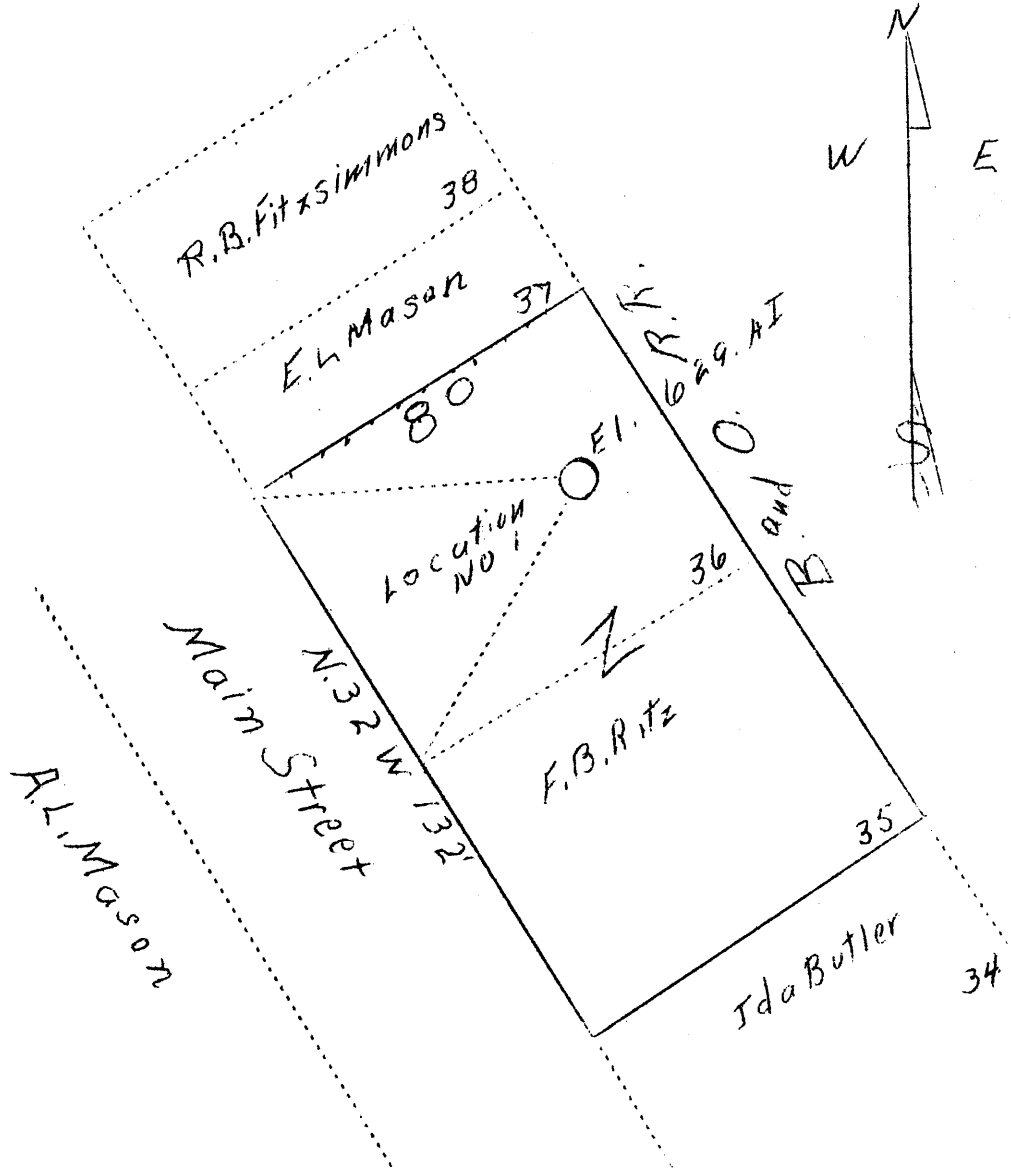


LATITUDE 39° 43'

LONGITUDE 80° 44'



New Location

abd 41

0.9 S
1.1 W

Company	George P. Wasmuth
Address	Glendale, J. Va.
Farm	F. B. Ritz
Tract	2 Lots - 35-36
Well (Farm) No.	One
Elevation (SP)	629 A.T.
Quadrangle	New Martinsville
County	Wetzel
District	Proctor
Engineer	F. W. Parsons
Eng. Reg. No.	203
File No.	W
Date	August 8, 1938
Scale	1" = 40'

STATE OF WEST VIRGINIA
 Department of Mines
 OIL & GAS DIVISION
 Charleston

WELL LOCATION MAP

File No. Wet-193

x Denotes location of well on U. S. Topographic Maps, scale 1 to 62,500, latitude and longitude lines being represented by border lines as shown.

- Denotes one inch spaces on border line of original tracing.

WEST VIRGINIA DEPARTMENT OF MINES

OIL & GAS DIVISION

WELL RECORD

Permit No. Wet-193

Gas Well

New Martinsville Quad.

CASING & TUBING

Company	Wasmuth & Burgess	10	10
Address	Glendale, W. Va.	8-1/4	58
Farm	F. B. Ritz ACRES -	6-5/8	150
Location	Ohio River	5-3/16	470
Well No.	One ELEV. 629		
District	Proctor - Wetzel County	Coal Encountered:	
Surface & Mineral	F. B. Ritz, Proctor, W. Va.	Feet	Inches
Drilling commenced	-	218	12
Drilling completed	Aug. 24, 1938		
Shot	-		
Open Flow	34/10ths Merc. in 2 inch		
Volume	1,000,000 c.f.		
Rock Pressure	125 lbs. hrs.		
Water	-		

Formation Color ^{Mar}/₅ TOP BASE RESULT Formation Color ^{Mar}/₅ TOP BASE RESULT

Clay	0	10							
Sand & Gravel	10	58							
Lime & Shells	58	140							
✓ Coal Blossom	140	141							
Lime & Shells	141	218							
✓ Coal Blossom	218	219							
Shale	219	240							
Red Rock	240	260							
Shells	260	380							
Red Rock	380	400							
Black Shale	400	450							
✓ Lime & Shells	450	470							
Band	470	505							
Black Slate	505	525							
✓ Sand	525	542							
Total Depth		542							