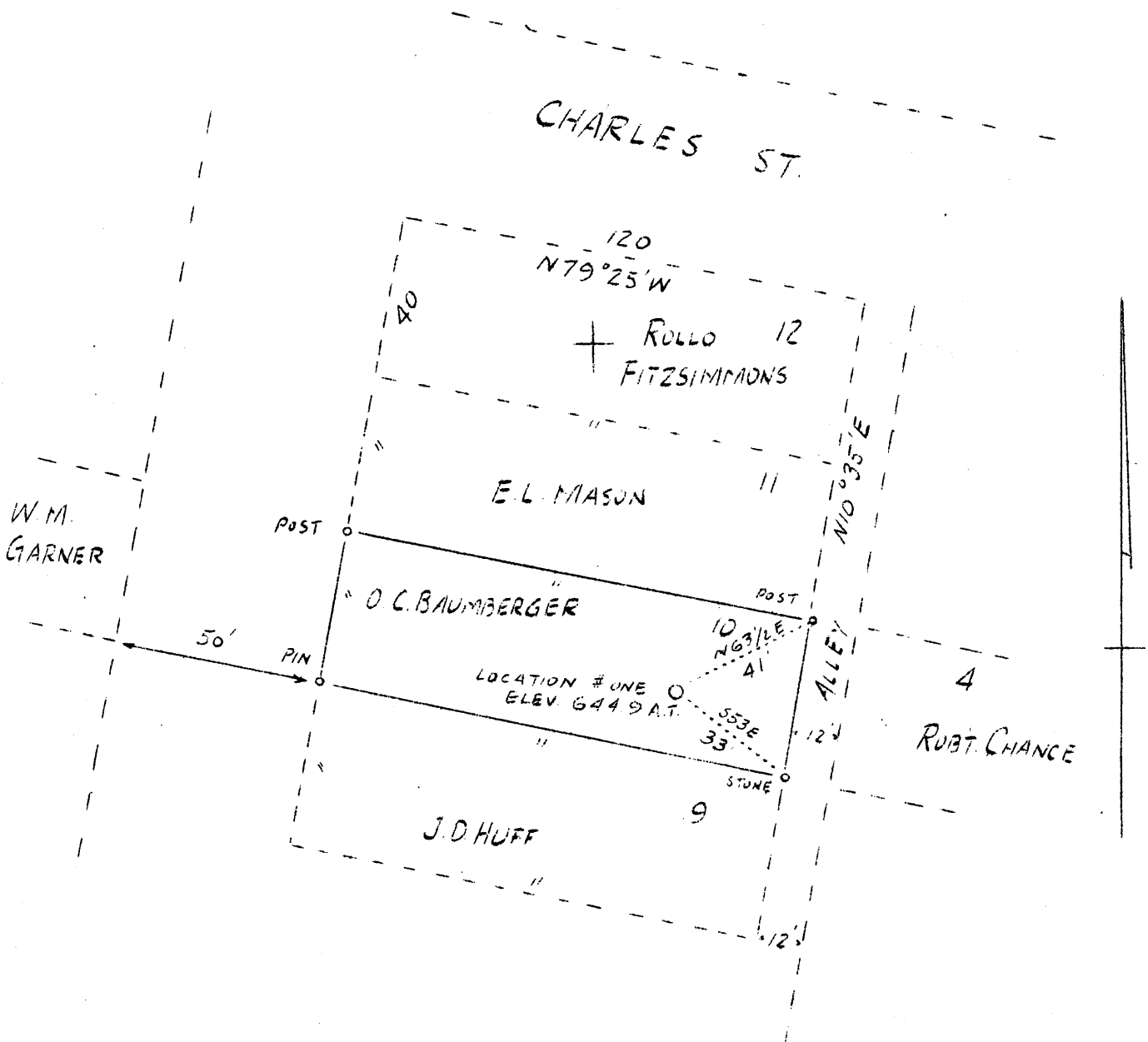


LATITUDE 39° 45'

LONGITUDE 80° 45'



2.6 S
3.8 W

NEW LOCATION

Company	Thomas Newton
Address	New Martinsville W. Va.
Lot	O. C. Baumberger
Lot No.	10
Elev. (Spirit Level)	644 8/10
Well (Farm) No.	one
Quadrangle	New Martinsville N.E.
County	Netzel
District	Proctor
Eng.	F. J. Parsons
Engineer's Reg. No.	203
File No.	7
Date	8/ 8/38
Scale	1" = 40'

STATE OF WEST VIRGINIA
Department of Mines
OIL AND GAS DIVISION
Charleston

WELL LOCATION MAP

File No. WET-194

x Denotes location of well on U. S. Topographic Maps, scale 1 to 62,500, latitude and longitude lines being represented by border lines as shown.

- Denotes one inch spaces on border line of original tracing.