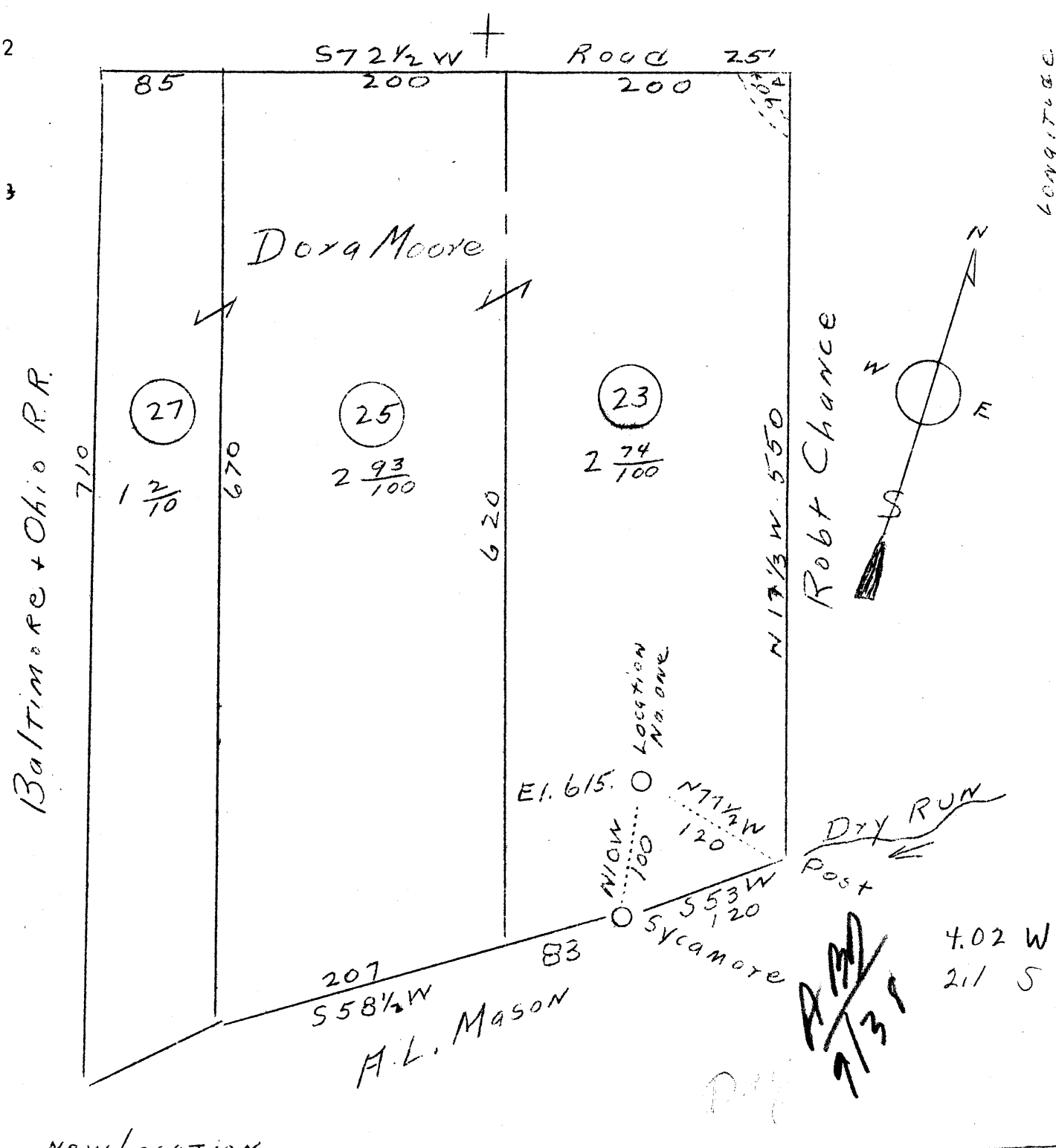


Latitude 39° 45'

Longitude 80° 45'



NEW LOCATION

Company	Wasmuth Callahan Gas Co.
Address	Glendale, W. Va.
Farm	Mrs. Dora Moore
Tract	3 Parcels
Acres	6-87/100
Well (Farm) No.	One
Elevation (SP)	615
Quadrangle	New Martinsville N1E,
County	Wetzel
District	Proctor
Engineer	F. W. Parsons
Eng. Reg. No.	203
File No.	W.
Date	August 16, 1938
Scale	1" = 100'

STATE OF WEST VIRGINIA
 Department of Mines
 OIL & GAS DIVISION
 Charleston

WELL LOCATION MAP

File No. WET-197

x Denotes location of well on U. S. Topographic Maps, scale 1 to 62,500, latitude and longitude lines being represented by border lines as shown.

- Denotes one inch spaces on border line of original tracing.