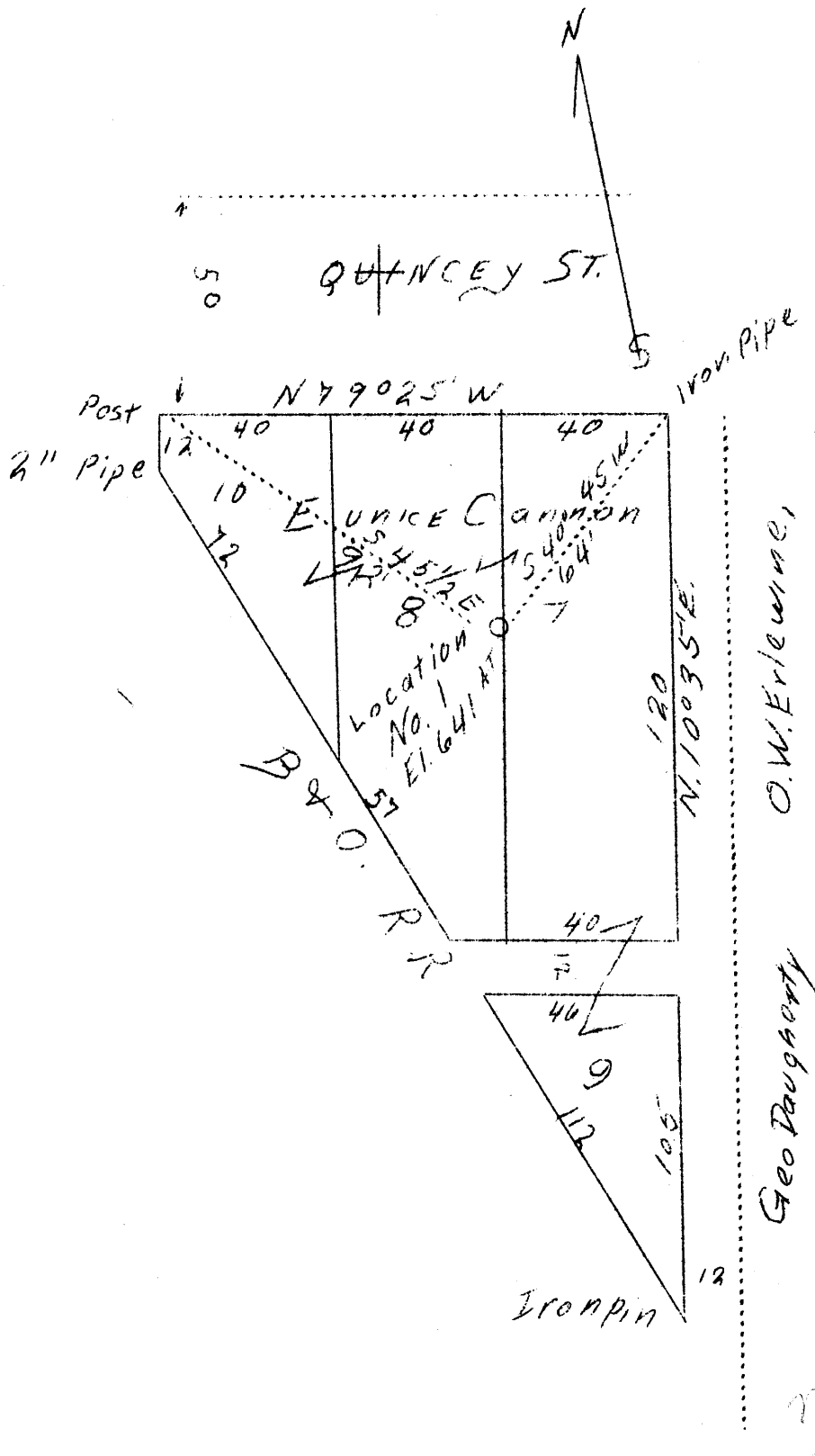


LATITUDE 39°45'

LONGITUDE 80°45'



New Location

Company	W. H. Swisher & Evert Hughs	STATE OF WEST VIRGINIA Department of Mines OIL & GAS DIVISION Charleston
Address	Charleston, W. Va.	
Farm	Eunice Cannon	
Acres	Lots 7,8,9 and 10, Blk. One Proctor, W. Va.	WELL LOCATION MAP
Well (Farm) No.	One	File No. <u>W-3-216</u>
Elevation (SL)	641	
Quadrangle	New Martinsville N.E.	
County	Wetzel	
District	Proctor	
Engineer	F. W. Parsons	
Eng. Reg. No.	203	
File No.	W	
Date	Dec. 3, 1938	
Scale	1" - 40' (?) (not legible)	x Denotes location of well on U. S. Topographic Maps, scale 1 to 62,500, latitude and longitude lines being represented by border lines as shown. - Denotes one inch spaces on border line of original tracing.