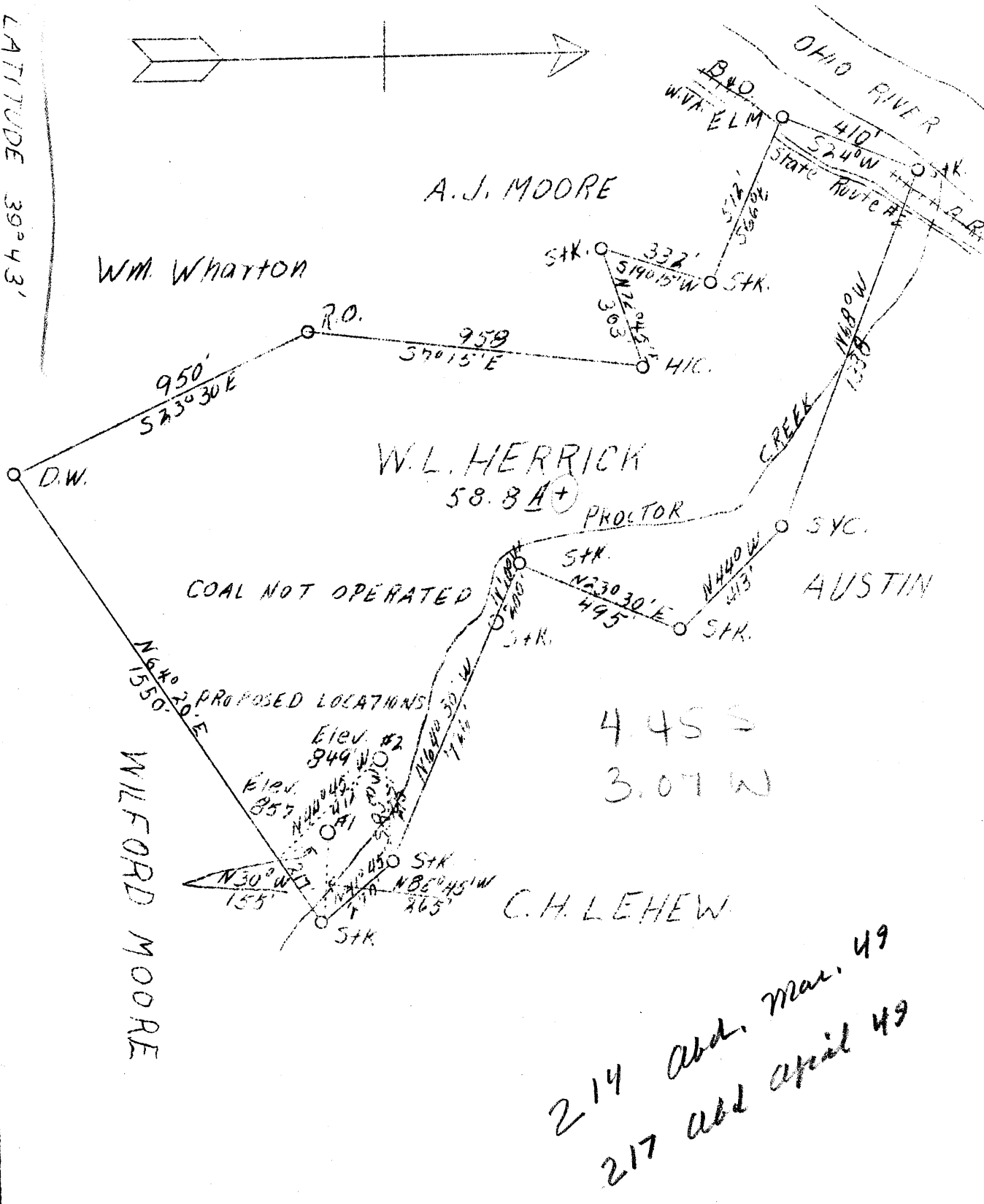
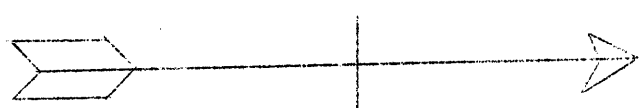


LONGITUDE 80°49'

LATITUDE 39°43'



214 add. Mar. 49
 217 add. April 49

Company	A. J. Klug
Address	Proctor, W. Va.
Farm	W. L. Herrick
Tract	One
Lease No.	One
Acres	58.8 plus
Well No.	1 and 2
Elevation	-
Quadrangle	New Martinsville
County	Wetzel
District	Proctor
Engineer	I. G. Klug
Date	Nov. 25, 1938
Scale	1" = 400'

STATE OF WEST VIRGINIA
 Department of Mines
 OIL & GAS DIVISION
 Charleston

WELL LOCATION MAP

214

File No. WVF-214-217
#1 & #2

-Denotes one inch spaces on border line of original tracing.

WEST VIRGINIA DEPARTMENT OF MINES

OIL & GAS DIVISION

WELL RECORD

Permit No. Wet-217

Gas Well

Quad.

CASING & TUBING

Company	A. J. King	10	40	40
Address	Proctor, W. Va.	8-1/4	325	325
Farm	Christine Herrick ACRES 58.8	6-5/8	537	537
Location	Proctor Crock	Blossom & Black Slate		
Well No.	2 ELEV. 874	✓ Coal at 220' - 30"		
District	Proctor - Wetzel County			
Surface & Mineral Address	Christine Herrick, et vir Proctor, W. Va.			
Drilling commenced	Feb. 15, 1939			
Drilling completed	March 14, 1939			
Open Flow	7/10ths Water in 1-1/2 inch			
Volume	126,000 c.f.			
Rock Pressure	85 lbs. 10 hrs.			
Fresh Water	20 and 30			
Salt Water	None			

Formation Color ^{Hy} Top Base Result Formation Color ^{Hy} Top Base Result

Formation	Color	^{Hy}	Top	Base	Result	Formation	Color	^{Hy}	Top	Base	Result
Loam & Gravel		s	0	10							
Shaloy Shells & Limc		s	10	30							
Sand		s med									
		h	538	538							
			538	560	Gas 540 to 556						