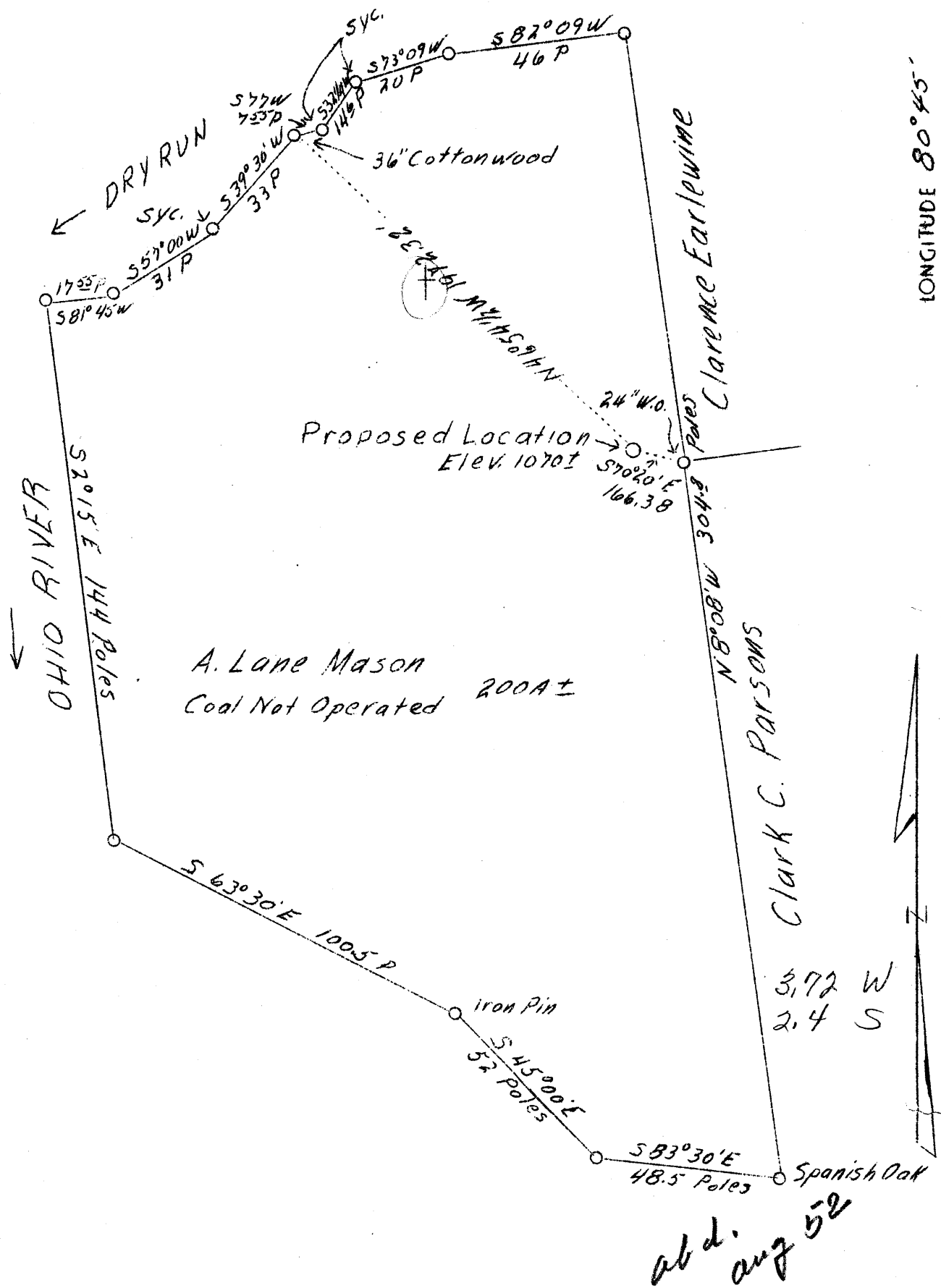


LATITUDE 39°45'

LONGITUDE 80°45'



Company	Hazlett Bros. & Conley	STATE OF WEST VIRGINIA Department of Mines OIL & GAS DIVISION Charleston
Address	74-6th St., McMechen, W. Va.	
Farm	A. Lane Mason	WELL LOCATION MAP File No. <u>Wet-222</u>  x Denotes location of well on U. S. Topographic Maps, scale 1 to 62,500, latitude and longitude lines being represented by border lines as shown.  - Denotes one inch spaces on border line of original tracing.
Acres	217 plus	
Well (Farm) No.	4	
Quadrangle	New Martinsville	
County	Wetzel	
District	Proctor	
Engineer	Walter W. Stegman	
Eng. Reg. No.	394	
File No.	O. W.	
Date	Jan. 19, 1939	
Scale	1" = 600'	

WEST VIRGINIA DEPARTMENT OF MINES

OIL & GAS DIVISION

W E L L R E C O R D

Permit No. Wet-222

Gas Well

Quadrangle - New Martinsville

CASING & TUBING

Company	Hazlett Bros. & Conley	10 Conductor	20
Address	McMechen, W. Va.	8-1/4	945
Farm	A. Lane Mason ACRES 235		945
Location	Ohio River		
Well No.	4 ELEV. 1070		
District	Proctor - Wetzel County		
Surface & Mi .	A. Lane Mason, Proctor, W. Va.		
Commenced	Dec. 22, 1938		
Completed	Jan. 7, 1939		
Date shot	Jan. 8 - Depth 1005		
Open Flow	6/10ths Water in 2 inch		
Rock Pressure	75 lbs. 12 hrs.		
Water	-		

*Formation Color* <sup>MAY</sup> *Top Base Result*      *Formation Color* <sup>MAY</sup> *Top Base Result*

1070  
250  
181  
  
607  
462  
1010  
607  
372

Formation	Color	Top	Base	Result	Formation	Color	Top	Base	Result
Clay	red	s		20					
Shale & Sand Gr.		s	20	289					
Coal	blk	s	289	293					
Shale	gr	s	293	400					
Lime Shale	wh	h	400	500					
Lime	wh	h	500	607					
M.T. Coal	blk	s	607	610					
Lime	wh	h	610	697					
Pitts. Coal	blk	s	697	700					
Lime&Shale	wh	h	700	810					
Red Rock	red	s	810	850					
Lime Shells	wh	h	850	870					
Red Rock	red	s	870	910					
Shale Shells	wh	h	910	945	Gas at	947 feet			
H. Neck Sand	gr	h	945	980					
Shale	drk	s	980	1000					
Cow R. Sand	gr.	s	1000	1039	Gas	1005 feet			
Sand Shells	wh	h	1039	1090	Gas at	1059			
Red Rock	red	s	1090	1104					
Total Depth				1104					