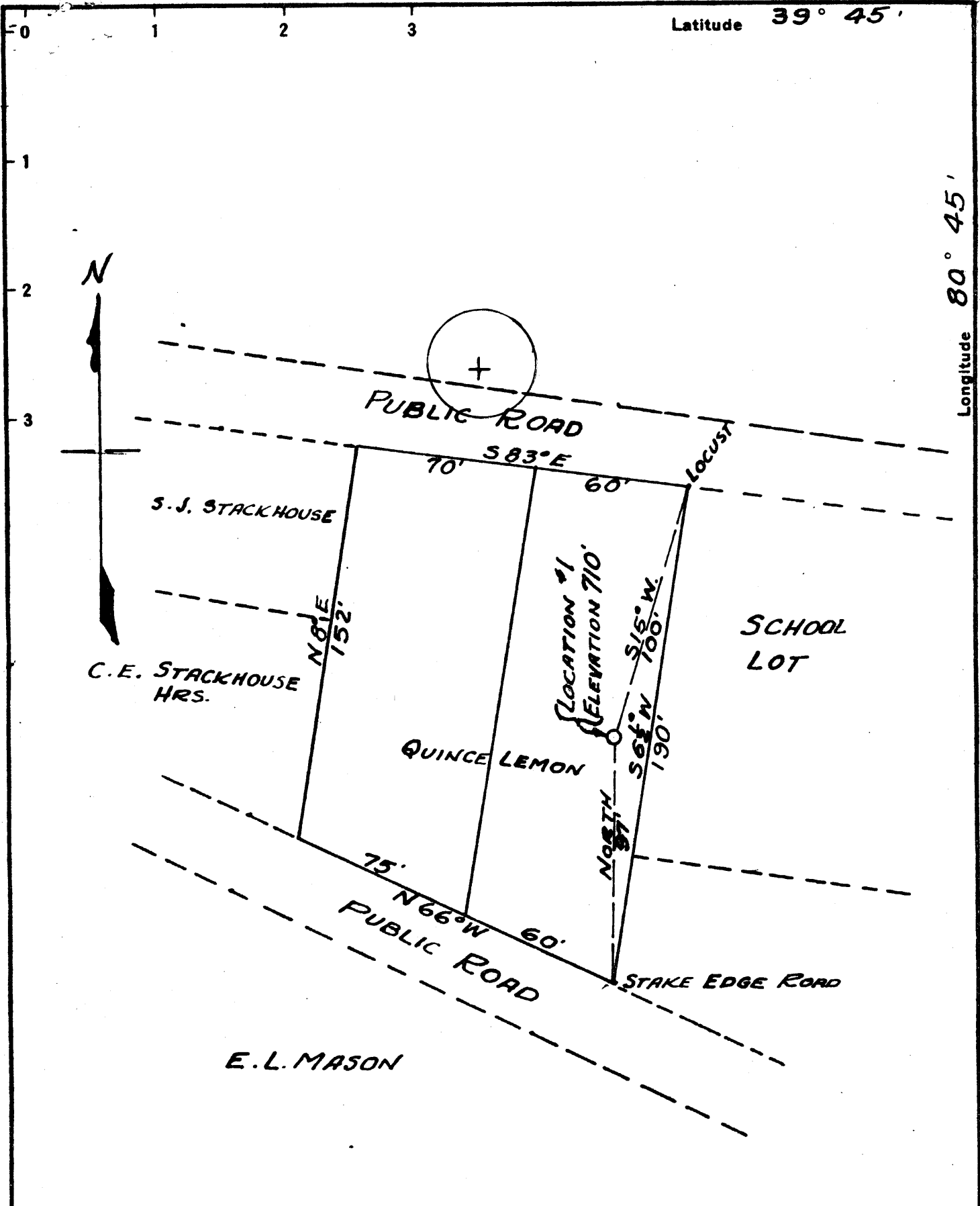


6/12/79

Latitude 39° 45'

Longitude 80° 45'



New Location   
 Drill Deeper   
 Abandonment  6/12/79

Company W.V. DEPT. OF HIGHWAYS  
 Address 300 S. JEFFERSON ST. MOUNDSVILLE, WV 26041  
 Farm QUINCE LEMON  
 Tract 2 Lots Acres \_\_\_\_\_ Lease No. \_\_\_\_\_  
 Well (Farm) No. 1 Serial No. \_\_\_\_\_  
 Elevation (Spirit Level) 710'  
 Quadrangle NEW MARTINSVILLE  
 County WETZEL District PROCTOR  
 Engineer F.W. PARSONS  
 Engineer's Registration No. 203  
 File No. OW Drawing No. \_\_\_\_\_  
 Date 7/12/39 Scale 50' = 1"

STATE OF WEST VIRGINIA  
 DEPARTMENT OF MINES  
 OIL AND GAS DIVISION  
 CHARLESTON

WELL LOCATION MAP  
 FILE NO. Well-226  
**47-103-0226-P**

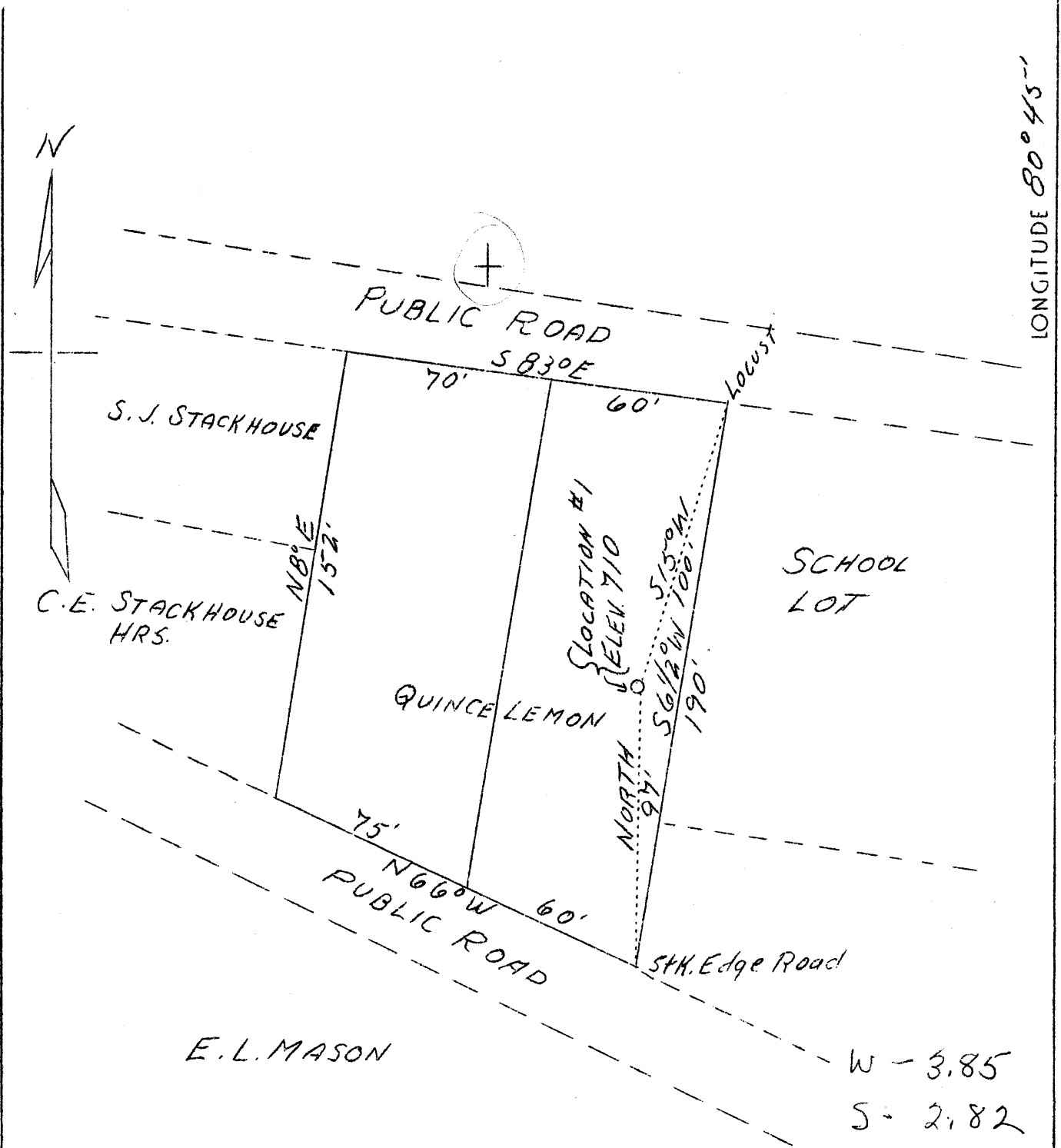
+ Denotes location of well on United States Topographic Maps, scale 1 to 62,500, latitude and longitude lines being represented by border lines as shown.

JUN 26 1979

- Denotes one inch spaces on border line of original tracing.

LATITUDE 39°45'

LONGITUDE 80°45'



New location Sheet No 2.

Company	W. H. Swisher	STATE OF WEST VIRGINIA Department of Mines OIL & GAS DIVISION Charleston  WELL LOCATION MAP  File No. <u>Wet-220</u>  x Denotes location of well on U. S. Topographic Maps, scale 1 to 62,500, latitude and longitude lines being represented by border lines as shown.  -- Denotes one inch spaces on border line of original tracing.
Address	Glenville, W. Va.	
Farm	Quince Lemon	
Acres	2 lots	
Well (Farm) No.	1	
Elevation (Sl)	710	
Quadrangle	New Martinsville N E.	
County	Wetzel	
District	Proctor	
Engineer	F. W. Parsons	
Eng. Reg. No.	203	
File No.	OW	
Date	July 12, 1939	
Scale	50' - 1"	

WEST VIRGINIA DEPARTMENT OF MINES

OIL & GAS DIVISION

WELL RECORD

Permit No. Wet-226

Gas Well

Quad.

CASING & TUBING

Company *Swisher* W. H. ~~Sursher~~  
 Address Glenville, W. Va.  
 Farm Quince Lemon ACRES 1  
 Location Proctor Creek  
 Well No. 1 ELEV. 710  
 District Proctor - Wetzel County  
 Surface & Mineral Quince Lemon, Proctor, W. Va.  
 Commenced July 25, 1939  
 Completed Aug. 30, 1939  
 Open Flow Fourteen (14) 2 inch  
 Volume One hundred eighty four thousand  
 Rock Pressure Seventy (70)  
 Fresh Water 45 and 150

8-1/4 12 None  
 6-5/8 216 216  
 5-3/16 523 523

COAL ENCOUNTERED:  
 @ 210' 12"  
 300 24

Formation Color <sup>MAP</sup> 3 TOP Base Result Formation Color <sup>MAP</sup> 5 TOP Base Result

Clay		0	10							
Rock		10	15							
Shale		15	50							
Slate & Shells		50	110							
Lime & Shells		110	210							
Mapletown Coal		210	211							
Slate & Shells		211	300							
Pittsburg Coal		300	302							
Slate & Shells		302	450							
Red Rock		450	490							
Horse Neck Sand		490	530							
Broken Lime Red Rock		530	620							
Low Run Sand		620	640							
Gas		625	635							

310  
 300  
 ---  
 410

710  
 210  
 200  
 710  
 200  
 410