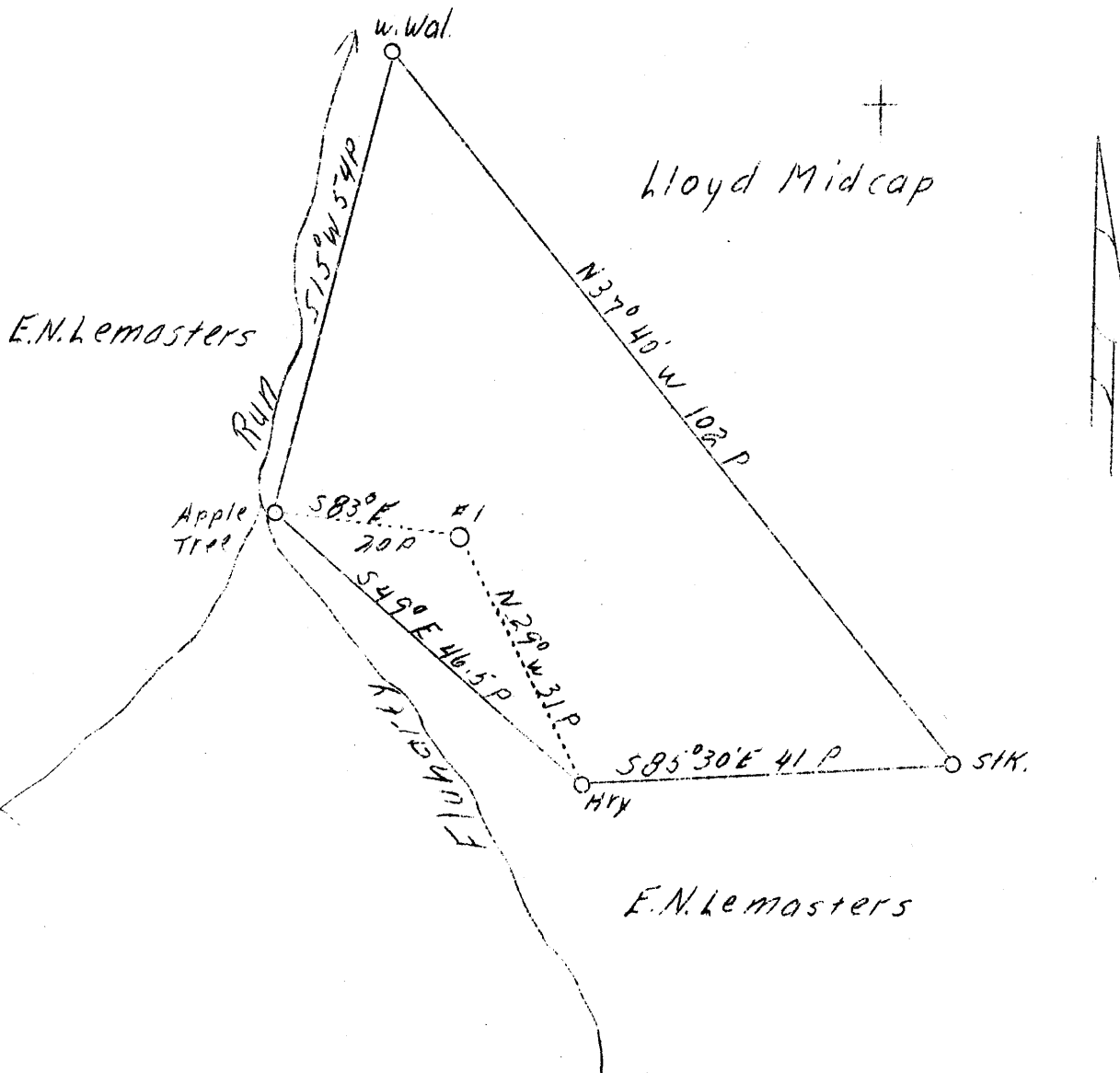


LATITUDE 39°35'

LONGITUDE 80°45'



ADD
11/29

W - 2.15
S - 1.9

New Location

Company	C. B. Smith
Address	Parkersburg, R. D. #3
Farm	J. W. Dawson
Acres	16-1/4
Well (Farm) No.	1
Elevation (SL)	960
Quadrangle	New Martinsville SE
County	Wetzel
District	Green
Engineer	J. E. Anderson
Eng. Reg. No.	Surveyor Wood County
Date	Sept. 6, 1939
Scale	1" - 20 poles

STATE OF WEST VIRGINIA
Department of Mines
OIL & GAS DIVISION
Charleston

WELL LOCATION MAP

File No. Net-232

x Denotes location of well on U. S. Topographic Maps, scale 1 to 62,500, latitude and longitude lines being represented by border lines as shown.

- Denotes one inch spaces on border line of original tracing.

DEPARTMENT OF MINES
OIL AND GAS DIVISION

WELL RECORD

WET 232

Dry Hole

Permit No.

Oil or Gas Well.....
(Kind)

Company Her Lee Oil Co.
Address Parkersburg, W. Va.
Farm J. W. Dawson Acres 16
Location (waters) Fluharty Run
Well No. 1 Eley 960
District Green County Wetzel
The surface of tract is owned in fee by J. W. Dawson
new Martinsville
Address W. Va. E 7 1/2
Mineral rights are owned by J. W. Dawson
Address
Drilling commenced Sept. 20, 1939
Drilling completed Oct. 28, 1939
Date shot..... Depth of shot.....
Open Flow /10ths Water in..... Inch
/10ths Merc. in..... Inch
Volume..... Cu. Ft.
Rock Pressure..... lbs..... hrs.
Oil..... bbls., 1st 24 hrs.
Fresh water..... feet..... feet
Salt water..... feet..... feet

Casing and Tubing	Used in Drilling	Left in Well	Packers
Size			
16.....			Kind of Packer.....
13.....			
10.....	140 ft		Size of.....
8 1/4.....	1018 ft		
6 1/2.....	1305 ft		Depth set.....
5 3/16.....	1925 ft		
3.....			Perf. top.....
2.....			Perf. bottom.....
Liners Used.....			Perf. top.....
			Perf. bottom.....

CASING CEMENTED..... SIZE..... No. Ft..... Date.....
COAL WAS ENCOUNTERED AT..... FEET..... INCHES
..... FEET..... INCHES..... FEET..... INCHES
..... FEET..... INCHES..... FEET..... INCHES

Formation	Color	Hard or Soft	Top	Bottom	Oil, Gas or Water	Depth Found	Remarks
13" Wood Conductor						14 ft	
Yellow Clay						13-60	
Sand				Very little Water		60-70	
Slate						70-125	140'-10"
Slate & Shells						125-300	
Black Slate						300-310	
Lime						310-320	
Slate	White					320-360	
Red Rock						360-390	
Slate & Shells						390-475	
Lime						475-500	
White Slate						500-550	
Lime						550-565	
XXXXXXX Shells						565-600	
Lime Hard						600-640	
Slate & Shells						640-700	
Sand						700-710	
Slate & Shells						710-755	
Black Slate						755-756	
Lime						756-770	
Black Slate						770-780	
Blue Slate						780-810	
Sand						810-845	
Slate						845-850	
Lime & Sand						850-890	
Red Rock						890-910	
Lime						910-925	
Slate						925-930	
Red Rock						930-935	
Shells						935-965	
Red Rock						965-995	
Slate						995-1080	
Red Rock						1080-1100	1018'-8 1/4"
Blue Slate						1100-1115	
Slate White						1115-1150	
Pink Rock						1150-1170	
Slate & Shells						1170-1260	
Pink Rock						1260-1270	
Blue slate						1270-1300	
Si. Dunkard						1300-1310	
Blue slate						1310-1320	1305'-6 5/8"



Formation	Color	Hard or Soft	Top	Bottom	Oil, Gas or Water	Depth Found	Remarks
Lime						1320-1325	
Slate						1325-1340	
Lime						1340-1350	
Sand						1350-1365	
Slate & Shells						1365-1395	
Sand						1395-1460	
Slate						1460-1580	
Sand						1580-1600	
Slate						1600-1620	
Sand						1620-1680	
Slate						1680-1685	
Sand dark						1685-1700	
Sand						1700-1770	
Black Lime						1770-1780	
Sand						1780-1790	
Black Slate						1790-1795	
black Sandy Slate						1795-1885	
Black Lime						1885-1890	
Slate						1890-1895	
Little Lime						1895-1908	
Pencil Cave						1908-1920	
Big Lime						1920-1986	1925'-5 3/16"
Keener Sand						1986-2010	
Injun Sand						2010-2040	
Black Formation						2040-2079	
Squaw Water						2079-2100	Total Depth

1925'-5 3/16"
 1920
 960
 -960

Date Oct 29th, 1939

APPROVED C B Smith, Harker oil Co, Owner

By C B Smith atly in fact.
 (Title)