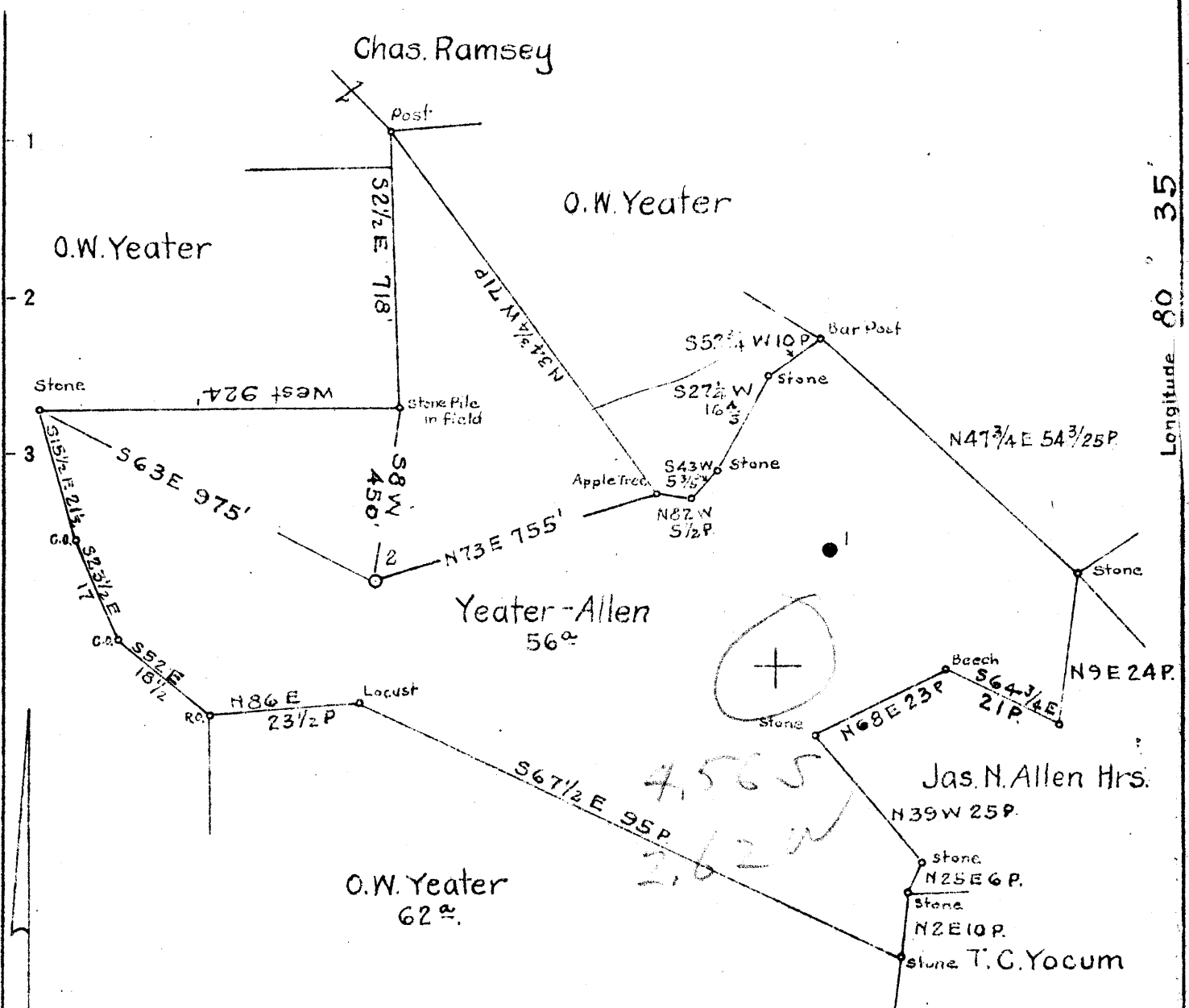


Latitude 39° 45'

Longitude 80° 35'



Surface: O.W. Yeater
 Silver Hill
 W. Va.

Goal: Bertha Coal Holding Co.
 % Robinson & Robinson
 Uniontown, Pa.

New Location...
 Drill Deeper...
 Abandonment...

NITEIWI Map N78

Company South Penn Natural Gas Co
 Address Parkersburg, W. Va.
 Farm Yeater-Allen
 Tract _____ Acres 56 Lease No. 81427
 Well (Farm) No. 2 Serial No. _____
 Elevation (Spirit Level) 1348.10
 Quadrangle Littleton
 County Wetzel District Center
 Engineer E.C. Tabler
 Engineer's Registration No. _____
 File No. _____ Drawing No. _____
 Date 10-19-43 Scale 1" = 400'

STATE OF WEST VIRGINIA
 DEPARTMENT OF MINES
 OIL AND GAS DIVISION
 CHARLESTON

WELL LOCATION MAP
 FILE NO. WET-296

+ Denotes location of well on United States Topographic Maps, scale 1 to 62,500, latitude and longitude lines being represented by border lines as shown.

- Denotes one inch spaces on border line of original tracing.

YEATER-ALLEN NO. 2 WELL.

Center District, Wetzel County, W. Va.

By South Penn Natural Gas Co., Parkersburg, W. Va.

Located 4.57 mi. S. of 39° 45' and 2.63 Mi. W. of 80° 35' - NC - Littleton Quadrangle.

Elevation, 1348.10' L.

Permit Wet-296.

Completed March 3, 1944.

Oil well in Stray Sand above Garden; 20 bbls. per week.

Section based on samples from 1860 to 3500', examined by J. H. C. Martens.

Pittsburgh Coal, 1230-1236', in driller's report.

Record to RCT from Martens March 24, 1945.

Top. Bottom. Thickness.

PENNSYLVANIAN, 518+ FEET.

1860 - 1890	30	Sandstone, nearly white, with green and brown specks; medium-grained
1890 - 1904	14	No sample
1904 - 1914	10	Siltstone, gray, 50%; white, medium-grained sandstone, 50%
1914 - 1942	28	Sandstone, white, coarse
1942 - 1954	12	Shale, dark-gray, silty
1954 - 1964	10	Coal and black shale, 60%; white, medium-grained sandstone, 40%
1964 - 1974	10	Shale, gray, with small siderite spherulites
1974 - 1982	8	Shale, gray, very silty
1982 - 2005	23	Sandstone, white, coarse, with crystal faces on many grains
2005 - 2025	20	Shale, light-gray, with spherulites and concretions of siderite; a little black shale and impure coal in top 5 feet
2025 - 2035	10	Shale, light-gray, very silty, micaceous, with many siderite spherulites
2035 - 2044	9	Siltstone, brown, sandy, calcareous, contains siderite
2044 - 2071	27	Sandstone, light-brown to nearly white, fine
2071 - 2081	10	Shale, gray to dark-gray
2081 - 2091	10	Shale and siltstone, gray, 70%; coal, 30%
2091 - 2131	40	Siltstone, gray
2131 - 2141	10	Shale, dark-gray, silty
2141 - 2155	14	Sandstone, white, coarse
2155 - 2160	5	Siltstone, gray, with siderite spherulites
2160 - 2170	10	Shale, brownish-gray to nearly white
2170 - 2190	20	Siltstone, gray, shaly
2190 - 2198	8	Sandstone, light-gray, fine
2198 - 2208	10	Shale, dark-gray, with siderite concretions
2208 - 2237	29	Shale, gray, with a few siderite spherulites
2237 - 2247	10	Sandstone, light-gray, very fine
2247 - 2254	7	Siltstone, gray
2254 - 2266	12	Sandstone, nearly white, medium-grained, 60%; gray siltstone, 40%
2266 - 2276	10	Siltstone, dark-gray, shaly
2276 - 2283	7	Shale, gray, silty
2283 - 2302	19	Siltstone, dark-gray, shaly
2302 - 2312	10	Shale, gray
2312 - 2323	11	Sandstone, white, with some brown stain, medium-grained
2323 - 2328	5	Sandstone, white, very fine, 60%; black shale, 40%
2328 - 2343	15	Sandstone, white, fine
2343 - 2378	25	Sandstone, white, medium-grained
GREENERIER LIMESTONE, 59 FEET		
2378 - 2424	46	Limestone, brown to light-brown
2424 - 2437	13	Limestone, light-brown, sandy, partly dolomitic
LOWER MISSISSIPPIAN AND UPPER DEVONIAN, 1063+ FEET		
2437 - 2484	47	Sandstone, light-gray, medium-grained
2484 - 2501	17	Siltstone, gray, shaly
2501 - 2511	10	Shale, dark-gray, silty

(OVER)

WATER-ALIEN NO. 2 WELL (Continued).

Top.	Bottom.	Thickness.	
2511	- 2521	10	Sandstone, light-gray, very fine
2521	- 2627	106	Sandstone, nearly white, fine- to medium-grained
2627	- 2640	13	Shale, gray, silty, 60%; white, fine sandstone, 40%
2640	- 2645	5	Sandstone, white, fine, 50%; very dark gray shale, 50%
2645	- 2654	9	Sandstone, white, fine
2654	- 2690	36	Shale, dark-gray, with siderite concretions
2690	- 2804	114	Shale and siltstone, gray
2804	- 2833	29	Siltstone, light-gray, coarse, with small amount of darker shale
2833	- 2917	84	Siltstone and silty shale, gray
2917	- 3006	89	Shale, gray to dark-gray, silty
2006	- 2015	9	Sandstone, white to light-brown, very fine, 50%; dark-gray shale, 50%
3015	- 3045	30	Shale and siltstone, gray; some white sandy siltstone near top of interval
3045	- 3050	5	Siltstone, light-gray
3050	- 3074	24	Shale and siltstone, gray
3074	- 3107	33	Shale and siltstone, gray, 80%; red silty shale, 20%
3107	- 3138	31	Shale, red, silty
3138	- 3178	40	Shale and siltstone, gray and red
3178	- 3206	28	Shale, gray, silty
3206	- 3230	24	Shale and siltstone, gray; a little fine sandstone with scarce coarse grains
3230	- 3252	22	Shale and siltstone, gray
3252	- 3258	6	Sandstone, white, with some yellow stain, very coarse
3258	- 3265	7	Sandstone, light-gray, fine to coarse, 70%; dark-gray shale, 30%
3265	- 3275	10	Shale, dark-gray, 60%; light-gray, very fine sandstone, 40%
3275	- 3284	9	Sandstone, light-gray, fine, with a few coarse grains, 80%; dark-gray shale, 20%
3284	- 3308	24	Shale, dark-gray, silty
3308	- 3327	19	Shale, dark-gray, silty, 70%; white to gray very fine sandstone
3327	- 3387	60	Shale, gray, with a few thin streaks of siltstone
3387	- 3397	10	Shale and siltstone, gray
3397	- 3402	5	Shale, gray, 60%; white to gray, very fine sandstone, 40%
3402	- 3462	60	Shale and siltstone, gray
3462	- 3478	16	Shale, gray
3478	- 3490	12	Siltstone, light-gray, coarse, 60%; gray shale, 40%
3490	- 3500	10	Shale, gray, silty
	3500		Total depth

WEST VIRGINIA DEPARTMENT OF MINES
OIL & GAS DIVISION
W E L L R E C O R D

Permit No. Wet 296
Littleton Quad.

Oil Well
CASING & TUBING

Company	South Penn Natural Gas Co.		
Address	Union Trust Bldg., Parkersburg, W.Va.		
Farm	Yeater-Allen Acres 56	10	565 Pulled
Location	Laurel Run	8½	1650 Same
Well No	2	Elev. 1348.10	6 5/8 2406 Same
District	Center	Wetzel County	2 U.E. 3265 Same
Surface	O.W. Yeater, Silver Hill, W.Va.		
Mineral	M.G. Allen et al, 510½ Richland Ave. Wheeling, W.Va. Mapletown Coal 1132'		
Commenced	Jan. 5, 1944	48"	Pgh. 1230' 72"
Completed	March 3, 1944		
Date shot	3-14-44 Depth 3255' to 3266'6 with 30 qts.		
Open flow	1.8 W 1/4" Orf.		
Volume	1950 C.F.		
Oil	20 bbls. per week (see remarks)		
Salt Water	1625' 1 br. pr. hr.; 2005 1 br. pr. hr. 2145' 3 br. pr. hr.; 2355 16 Br. pr. hr.		

Clay	0	13	Lime	2090	2120	
Sand	13	25	Slate	2120	2140	
Slate	25	200	Salt Sand	2140	2162	
Red Rock	200	220	Slate	2162	2182	
Lime, Slate	220	270	Lime	2182	2220	
Red Rock	270	300	Slate	2220	2242	
Slate	300	320	Lime	2242	2266	
Red Rock	320	460	Slate	2266	2275	
Lime, Slate	460	520	Lime	2275	2315	
Red Rock	520	530	Maxon Sand	2315	2376	
Slate, Lime	530	575	Big Lime	2376	2435	2435
Red Rock	575	585	Big Injun Sand	2435	2660	
Slate	585	640	Slate & Shells	2660	2720	
Red Rock	640	650	Berea Sand Square	2720	2740	
Lime, Slate	650	730	Slate	2740	2787	2378
Red Rock	730	735	Gantz Sand Weir	2787	2865	1348
Sand	735	780	Slate	2865	3010	1030
Slate	780	880	Fifty Foot Sand Run	3010	3038	
Sand	880	910	Slate	3038	3045	
Slate	910	970	Lime	3045	3055	
Red Rock	970	980	Slate	3055	3090	
Slate, Lime	980	1132	Lime	3090	3112	
Mapletown Coal	1132	1136	Red Rock	3112	3140	
Lime	1136	1188	Thirty Foot Sand 50'	3140	3163	
Slate	1188	1230	Slate	3163	3207	
Pittsburgh	1230	1236	Lime	3207	3220	
Lime	1236	1255	Slate	3220	3254	
Slate	1255	1305	Stray Sand	3254	3266	
Sand	1305	1325	Slate	3266	3275	
Red Rock	1325	1343	Gordon Sand	3275	3287	
Slate	1343	1375	Lime	3287	3295	
Red Rock	1375	1470	Slate	3295	3308	
Lime	1470	1475	Fourth Sand	3308	3330	
Slate	1475	1500	Slate	3330	3374	
Red Rock	1500	1555	Fifth Sand	3374	3380	
Sand	1555	1585	Slate	3380	3395	
Red Rock	1585	1620	Lime	3395	3403	
Little Dunkard	1620	1660	Slate	3403	3433	
Slate	1660	1710	Lime	3433	3445	
Red Rock	1710	1720	Slate	3445	3500	
Lime	1720	1750	TOTAL DEPTH		3600	
Big Dunkard	1750	1780				
Slate, Lime	1780	1835	Oil and Gas 3255-3260 show of oil			
Gas Sand	1835	1904	.2 water 1" Orf. 10,556 C.F.			
Lime	1904	1920	Test at date of completion			
Sand	1920	1940	Show of oil .2 water 1/8" Orf. 161 C.F.			
Slate	1940	1985				
Salt Sand 1st	1985	2010	REMARKS: Cement plug 3278-3268'.			
Slate	2010	2044	Well plugged back to 3268' and shot in			
Salt Sand 2nd	2044	2071	stray sand with 30 qts. Bridged hole at			
Slate	2071	2090	3328' and filled with stone to 3303'.			
Prod. 4/7-44, 10 bbls. 4/10, & 4/14, 10 bbls.			Filled with Red Clay 3303-78'.			