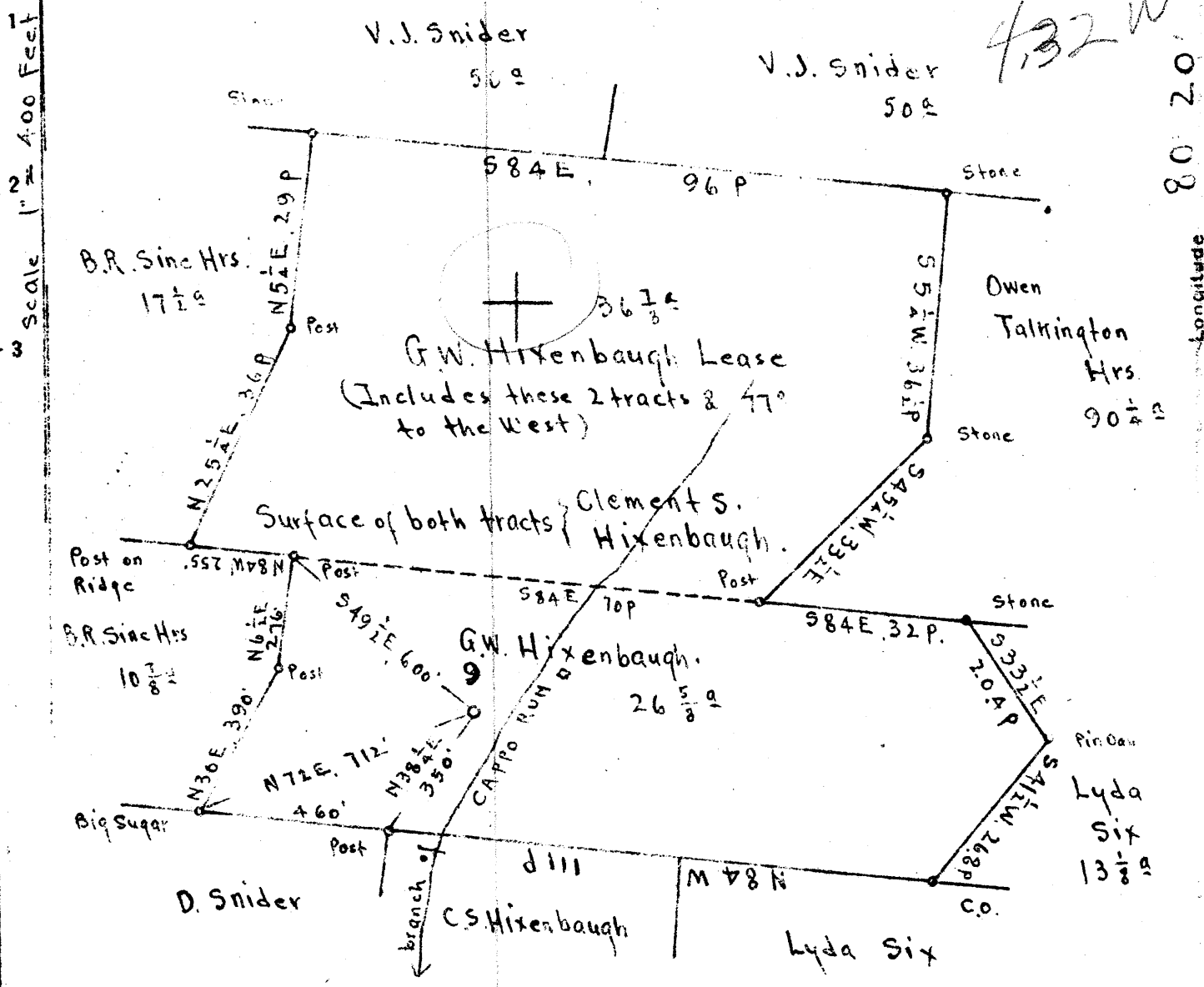


3035
432 W



Line 2143
-2230

Surface: Clement S. Hixenbaugh; Hundred, Wetzel Co; W.Va.
 Coal: T.L. Rogerson; Moundsville, W.Va. (Coal Survey 662-E)

New Location X
 Drill Deeper
 Abandonment

DAY

N 18 E 12

Company Cochran and Cochran
 Address 1016 Market St., Parkersburg, W.Va.
 Farm G.W. Hixenbaugh
 Tract _____ Acres 662 Lease No. _____
 Well (Farm) No. 9 Serial No. _____
 Elevation (Spirit Level) _____ Floor (Est) 1201.80
 _____ Gmsd 1200.80
 Quadrangle MANNINGTON NC
 County Wetzel District Church
 Engineer E.C. Tabler
 Engineer's Registration No. _____
 File No. _____ Drawing No. _____
 Date March 13th 1948 Scale 1" = 400 Feet

STATE OF WEST VIRGINIA
 DEPARTMENT OF MINES
 OIL AND GAS DIVISION
 CHARLESTON

WELL LOCATION MAP
 FILE NO. WEB-342

+ Denotes location of well on United States Topographic Maps, scale 1 to 62,500, latitude and longitude lines being represented by border lines as shown

- Denotes one inch spaces on border line of original tracing

WEST VIRGINIA DEPARTMENT OF MINES
OIL & GAS DIVISION
WELL RECORD

Permit No. Wet 342		Dry Hole
Mannington Quad.		casing & tubing
Company	Cochran and Cochran	
Address	1016 Market St., Parkersburg, W.Va.	
Farm	G.W. Hixenbaugh Acres 64	
Location		10 165
Well No.	9 Elev. 1201	8 1328
District	Church Wetzell County	6 5/8 2200
Surface	G.W. & Mary Hixenbaugh, Hundred, W.Va.	
Mineral	Hixenbaugh and Moundsville Coal Co. Moundsville, W.Va.	
Commenced	May 6, 1948	Coal at 495 to 499;
Completed	July 7, 1948	630 to 635; 860 to 865;
Date shot	July 2 and 6 Depth 3159 to 3166	974 to 981
	with 15 qts. and 30 qts.	
Open flow	3/10ths W in 1"	
Fresh Water	60'	

MAY 23 1949

Clay	S		D	14	Slate & Shell	1460	1485
Lime		H		30	Sand	1485	1515
Shale		S		60	Slate	1515	1520
Sand		H		75	Sand	1520	1595
Lime		H		90	Slate	1595	1600
Shale		S		90	Lime	1600	1635
Lime		H		135	Slate	1685	1650
Slate & Shell				170	Gas Sand	1650	1690
Lime		H		240	Slate & Shell	1690	1746
Slate		S		270	1st Salt Sand	1746	1848
Lime		H		335	Slate & Shell	1847	1865
Slate		S		350	Sand 2nd salt	1865	1903
Red Rock		S		360	Slate & Shell	1903	1930
Slate & Shell				365	2nd Salt Sand	1930	2007
Coal				495	Slate & Shell	2007	2050
Lime				499	Pink Rock	2050	2055
Slate & Shell				520	Slate & Shell	2055	2085
Coal				630	Lime	2085	2100
Lime				635	Maxon Sand	2100	2140
Slate & Shell				655	Slate	2140	2143
Lime				730	Lime	2143	2230
Mapletown Coal				860	Big Injun Sand	2230	2446
Lime				865	Slate & Shell	2246	2810
Slate Lt				875	50' Shells	2810	2955
Lime		H		890	Sand	2955	3050
Slate Dk				955	Pink Rock	3050	3060
Pittsburgh Coal		S		974	Stray Sand	3060	3077
Lime				981	Brink Slate	3077	3095
Slate & Shells				991	Sand	3095	3106
Rock				1040	Slate	3106	3110
Lime				1045	4th Sand	3110	3166
Slate				1070	Slate	3166	3185
Lime				1080	5th Sand	3185	3212
Slate & Shell				1087			
Red Rock				1104			
Lime				1109	Show of oil	2128	
Red Rock				1116	Show of oil	3005	
Slate & Shell				1121	Show of oil	3160 to 3166 and show of gas	
Red Rock				1145			
Lime				1145			
Red Rock				1155			
Lime		Gritty		1184			
Red Rock				1195			
Lime				1200			
Slate & Shell				1240			
Red Rock				1250			
Lime				1255			
Slate & Shell				1300			
Lime Gritty				1334			
Slate & Shell				1380			
Sand				1398			
Slate Dk				1410			
Lime		H		1445			
Sand B.D		H		1460			

2143
1201
942

G.W. HIXENBAUGH NO. 9 — COCHRAN & COCHRAN — WYET-34