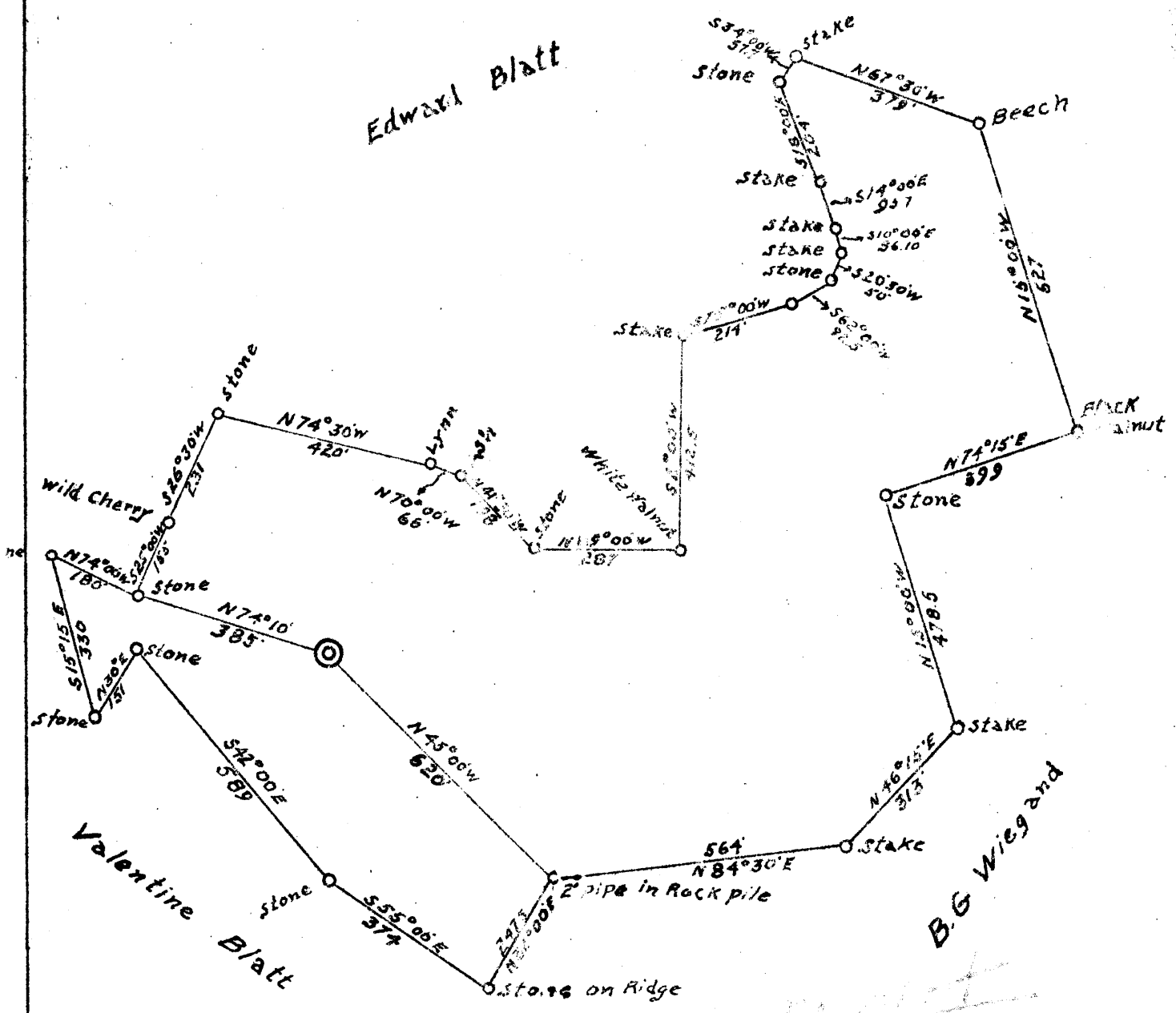


Latitude 39°45'

Longitude 80°40'



NEW LOG.

Company G.W. Edgar & Daisy E. Inc.  
 Address New Martinsville W.Va.  
 Farm B.G. Wiegand  
 Tract 1 Acres 37 Lease No. \_\_\_\_\_  
 Well (Farm) No. 1 Serial No. \_\_\_\_\_  
 Elevation (Spirit Level) 1312  
 Quadrangle Littleton  
 County Wetzel District Proctor  
 Engineer George L. McIntire  
 Engineer's Registration No. 1187  
 File No. \_\_\_\_\_ Drawing No. \_\_\_\_\_  
 Date June 15 1950 Scale 1" = 300'

STATE OF WES. VIRGINIA  
 DEPARTMENT OF MILITARY AFFAIRS  
 OIL AND GAS DIVISION  
 CHARLESTON

WELL LOCATION MAP  
 FILE NO. WET-365

+ Denotes location of well on United States Topographic Maps, scale 1 to 62,500, latitude and longitude lines being represented by border lines as shown.  
 - Denotes one inch spaces on border line of original tracing.