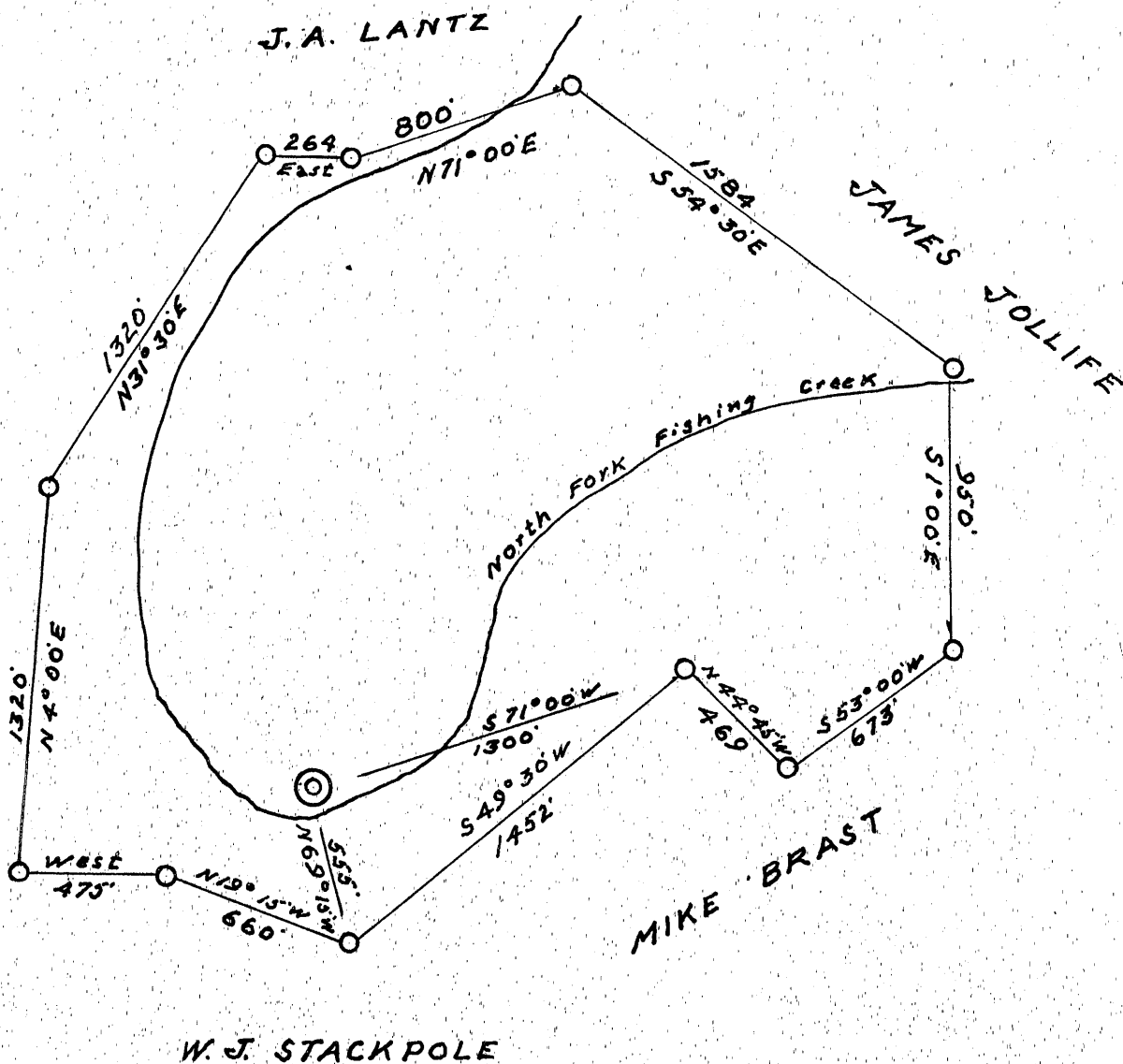


201

Latitude 39° 35'

Longitude 80° 35'

1.05 S  
3.75 W



- New Location
- Drill Deeper
- Abandonment

|                             |   |
|-----------------------------|---|
| Company                     | CHAS. E LETTS                           |
| Address                     | 2714 WEST JEFFSON AVE.<br>DETROIT MICH. |
| Farm                        | WORTH JACOBS                            |
| Tract                       | Acres 106 Lease No.                     |
| Well (Farm) No.             | ONE Serial No.                          |
| Elevation (Spirit Level)    | 730'                                    |
| Quadrangle                  | LITTLETON                               |
| County                      | WETZEL District GRANT                   |
| Engineer                    | G.L. McIntire                           |
| Engineer's Registration No. | 1187                                    |
| File No.                    | Drawing No.                             |
| Date                        | 12/28/53 Scale 1" = 600'                |

STATE OF WEST VIRGINIA  
DEPARTMENT OF MINES  
OIL AND GAS DIVISION  
CHARLESTON

WELL LOCATION MAP  
FILE NO. Wet-390

+ Denotes location of well on United States Topographic Maps, scale 1 to 62,500, latitude and longitude lines being represented by border lines as shown.

- Denotes one inch spaces on border line of original tracing.

6-6 41





STATE OF WEST VIRGINIA  
DEPARTMENT OF MINES  
OIL AND GAS DIVISION 19

Well plugged back to the  
Pittsburgh Coal and being  
produced from that point  
2/1/57

Quadrangle LITTLETON

Permit No. WET-390

**WELL RECORD**

Oil or Gas Well DRXX  
(KIND)

Company Chas. E. Letts  
Address 2714 West Jefferson Avenue-Detroit, Mich.  
Farm Worth Jacobs Acres 106  
Location (waters) North Fork Fishing Creek  
Well No. 1 Elev. 730'  
District Grant County Wetzel  
The surface of tract is owned in fee by Worth Jacobs  
Fairmont, W. Va. Address  
Mineral rights are owned by Same  
Address  
Drilling commenced January, 1954  
Drilling completed  
Date Shot From To  
With  
Open Flow /10ths Water in Inch  
/10ths Merc. in Inch  
Volume Cu. Ft.  
Rock Pressure lbs. hrs.  
Oil bbls., 1st 24 hrs.  
Fresh water feet feet  
Salt water feet feet

| Casing and Tubing | Used in Drilling | Left in Well | Packers        |
|-------------------|------------------|--------------|----------------|
| Size              |                  |              |                |
| 16                |                  |              | Kind of Packer |
| 13                | 20'              | 20'          |                |
| 10                | 195'             | 195'         | Size of        |
| 8 1/4             | 872'             | 872'         |                |
| 6 1/2             | 972'             | 972'         | Depth set      |
| 5 3/16            | 1739'            | 1739'        |                |
| 3                 |                  |              | Perf. top      |
| 2                 |                  |              | Perf. bottom   |
| Liners Used       |                  |              | Perf. top      |
|                   |                  |              | Perf. bottom   |

CASING CEMENTED SIZE No. Ft. Date

COAL WAS ENCOUNTERED AT 222' FEET 12 INCHES  
382' FEET 12 INCHES 482' FEET 60 INCHES  
FEET INCHES FEET INCHES

| Formation               | Color | Hard or Soft | Top | Bottom | Oil, Gas or Water  | Depth Found | Remarks |
|-------------------------|-------|--------------|-----|--------|--------------------|-------------|---------|
| Top soil                |       |              | 0   | 12     |                    |             |         |
| Gravel                  |       |              | 12  | 25     |                    |             |         |
| Sand                    |       |              | 25  | 60     | Water              | Big waters  |         |
| Slate                   |       |              | 60  | 90     |                    |             |         |
| Lime & Slate            |       |              | 90  | 140    | Black Slate        |             |         |
| Black Slate             |       |              | 140 | 180    |                    |             |         |
| Red Rock                |       |              | 180 | 185    |                    |             |         |
| Lime                    |       |              | 185 | 193    |                    |             |         |
| Red Rock                |       |              | 193 | 198    |                    |             |         |
| Lime                    |       |              | 198 | 222    |                    |             |         |
| Coal                    |       |              | 222 | 223    |                    |             |         |
| Lime                    |       |              | 223 | 278    |                    |             |         |
| Red Rock                |       |              | 278 | 285    |                    |             |         |
| Lime                    |       |              | 285 | 382    |                    |             |         |
| Coal (Mapletown)        |       |              | 382 | 383    | 2 bbls. of water   |             |         |
| Lime                    |       |              | 383 | 482    |                    |             |         |
| Coal (Pittsburgh)       |       |              | 482 | 488    | more water and gas |             |         |
| Lime                    |       |              | 488 | 545    |                    |             |         |
| Red Rock                |       |              | 545 | 550    |                    |             |         |
| Slate & Lime            |       |              | 550 | 570    |                    |             |         |
| Lime and Sand           |       |              | 570 | 590    |                    |             |         |
| Slate                   |       |              | 590 | 620    |                    |             |         |
| Red Rock                |       |              | 620 | 630    |                    |             |         |
| Sand                    |       |              | 630 | 635    |                    |             |         |
| Slate                   |       |              | 635 | 660    |                    |             |         |
| Lime                    |       |              | 660 | 685    |                    |             |         |
| Red Rock                |       |              | 685 | 710    |                    |             |         |
| Slate                   |       |              | 710 | 730    |                    |             |         |
| Lime                    |       |              | 730 | 760    |                    |             |         |
| Red Rock                |       |              | 760 | 770    |                    |             |         |
| Sand                    |       |              | 770 | 775    |                    |             |         |
| Slate & Shells          |       |              | 775 | 890    |                    |             |         |
| Slate and Shells (soft) |       |              | 890 | 895    |                    |             |         |
| Black Slate             |       |              | 895 | 910    |                    |             |         |
| Sand                    |       |              | 910 | 935    |                    |             |         |
| Slate                   |       |              | 935 | 960    |                    |             |         |

Fract ✓  
4-20-56



(Over)

(Over)

| Formation                       | Color   | Hard or Soft | Top 7 | Bottom | Oil, Gas or Water        | Depth Found | Remarks |
|---------------------------------|---------|--------------|-------|--------|--------------------------|-------------|---------|
| ✓ Sand (Big Dunkard)            | Dunkard |              | 960   | 1105   |                          |             |         |
| Slate                           |         |              | 1105  | 1110   |                          |             |         |
| ✓ Sand <sup>Gas Sand</sup>      |         |              | 1110  | 1220   |                          |             |         |
| Slate                           |         |              | 1220  | 1235   |                          |             |         |
| ✓ Sand                          |         |              | 1235  | 1320   |                          |             |         |
| Slate                           |         |              | 1320  | 1330   |                          |             |         |
| ✓ Sand                          |         |              | 1330  | 1525   |                          |             |         |
| Shale                           |         |              | 1525  | 1520   | 4 bbls pr. hr. water     |             |         |
| Lime                            |         |              | 1520  | 1560   |                          |             |         |
| Shale                           |         |              | 1560  | 1580   |                          |             |         |
| ✓ Sand (Maxon)                  |         |              | 1580  | 1610   | Show of Oil              |             | 1670    |
| Lime                            |         |              | 1610  | 1646   |                          |             | 230     |
| Shale                           |         |              | 1646  | 1658   |                          |             | 940     |
| Lime <sup>Little</sup>          |         |              | 1658  | 1667   |                          |             |         |
| ✓ Pencil Cave                   |         |              | 1667  | 1670   |                          |             |         |
| ✓ Big Lime                      |         |              | 1670  | 1716   |                          |             |         |
| ✓ Big Injun                     |         |              | 1716  | 1969   | Little Gas - 1760'       |             |         |
| Shale                           |         |              | 1969  | 2015   | Hole full of water 1716' |             |         |
| ✓ Squaw Sand                    |         |              | 2015  | 2025   | Little Gas 1850'         |             |         |
| Slate & Shells                  |         |              | 2025  | 2095   | Little Gas 1890' ✓       |             |         |
| Sand                            |         |              | 2095  | 2125   |                          |             |         |
| Slate and Shells                |         |              | 2125  | 2395   |                          |             |         |
| Pink Rock                       |         |              | 2395  | 2405   |                          |             |         |
| Slate & Shells                  |         |              | 2405  | 2517   |                          |             |         |
| ✓ Stray Sand                    |         |              | 2517  | 2542   | Little Gas               |             |         |
| Slate                           |         |              | 2542  | 2546   |                          |             |         |
| ✓ Gordon Sand                   |         |              | 2549  | 2577   |                          |             |         |
| Shaley Lime                     |         |              | 2577  |        |                          |             |         |
| Total Depth                     |         |              |       | 2583   |                          |             |         |
| Possible show of oil and gas at |         |              | 2573' |        |                          |             |         |

Date June 29, 1955, 19

APPROVED Signed: Charles E. Letts, Owner

By \_\_\_\_\_ (Title)