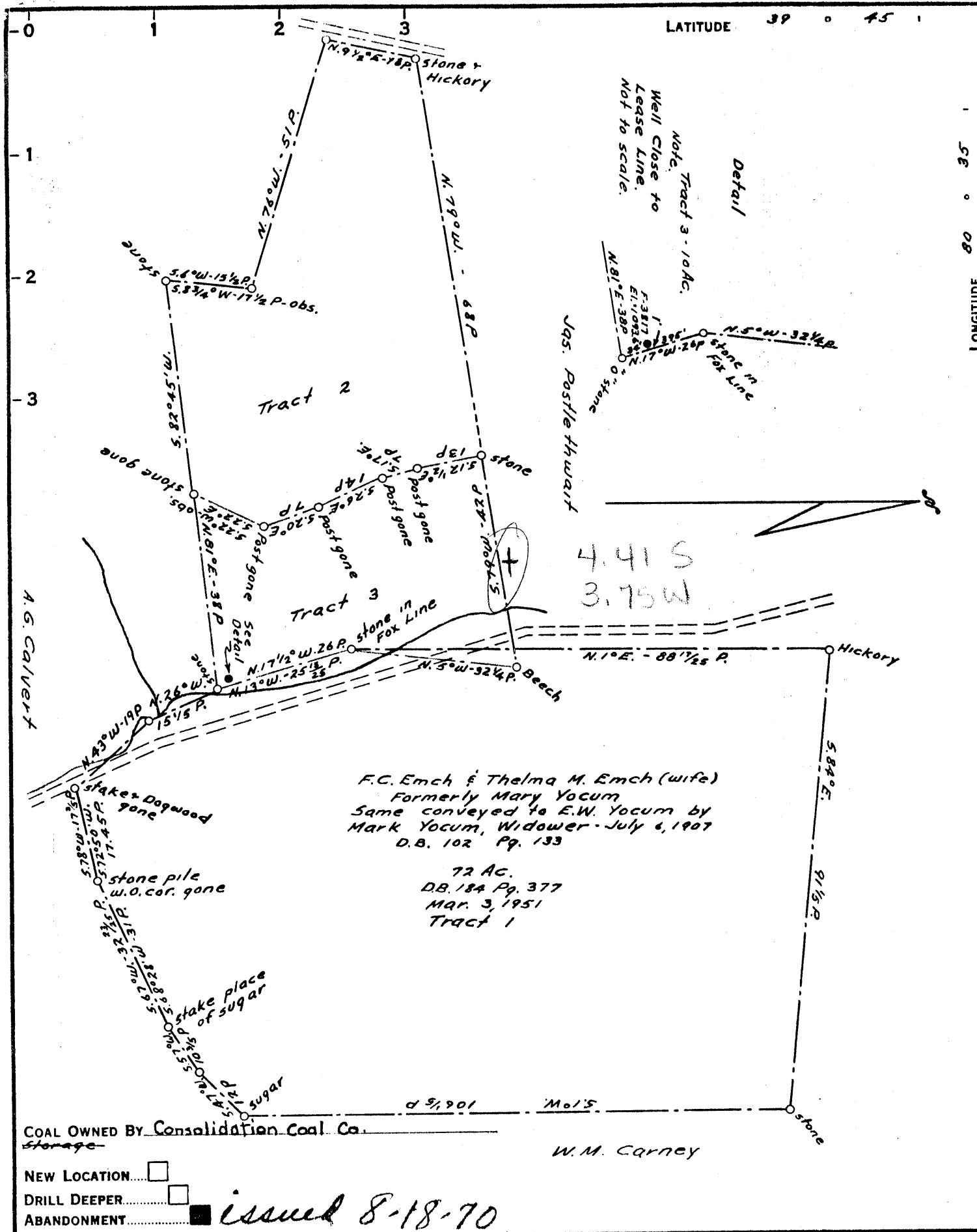


LATITUDE 39 0 45



COAL OWNED BY Consolidation Coal Co. Storage

W.M. Carney

NEW LOCATION
 DRILL DEEPER
 ABANDONMENT

issued 8-18-70

COMPANY The Manufacturers Light & Heat
 ADDRESS 800 Union Trust Bldg. Pgh. Pa.
 FARM Mary Yocum (R.D. Harlan)
 TRACT 10 ACRES 10 LEASE NO. 26978
 WELL (FARM) NO. 1 SERIAL NO. L-4294
 ELEVATION (SPIRIT LEVEL) 1093.6
 QUADRANGLE Littleton NC
 COUNTY Wetzel DISTRICT Proctor
 ENGINEER Thomas E. Virgin - J.M.
 ENGINEER'S REGISTRATION NO. 1503
 FILE NO. _____ DRAWING NO. Y. 15-20
 DATE 14 June 54 SCALE 1" = 400'

STATE OF WEST VIRGINIA
 DEPARTMENT OF MINES
 OIL AND GAS DIVISION
 CHARLESTON

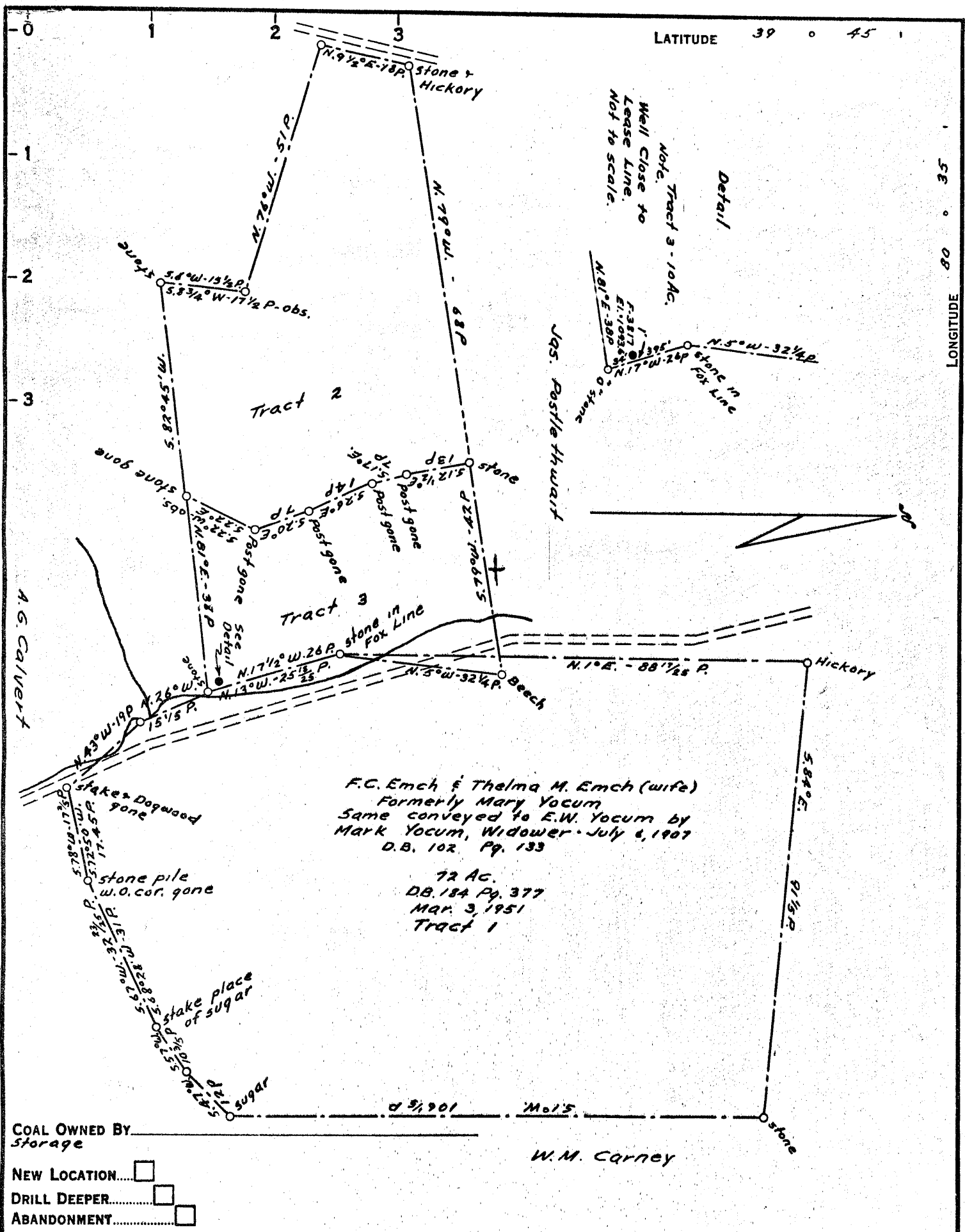
WELL LOCATION MAP

FILE NO. Wet-404-Redrill-

+ DENOTES LOCATION OF WELL ON UNITED STATES TOPOGRAPHIC MAPS. SCALE 1 TO 62,500. LATITUDE AND LONGITUDE LINES BEING REPRESENTED BY BORDER LINES AS SHOWN.

-- DENOTES ONE INCH SPACES ON BORDER LINE OF ORIGINAL TRACING.

9-0 36



COAL OWNED BY _____
 Storage _____

NEW LOCATION.....
 DRILL DEEPER.....
 ABANDONMENT.....

COMPANY The Manufacturers Light & Heat
 ADDRESS 800 Union Trust Bldg. Pgh. Pa.
 FARM Mary Yocum (R.D. Harlan)
 TRACT _____ ACRES 10 LEASE NO. 26978
 WELL (FARM) NO. 1 SERIAL NO. F-3817
 ELEVATION (SPIRIT LEVEL) 1093.6
 QUADRANGLE Littleton
 COUNTY Wetzel DISTRICT Proctor
 ENGINEER Thomas E. Unger - J.M.
 ENGINEER'S REGISTRATION NO. 1503
 FILE NO. _____ DRAWING NO. Y-15-20
 DATE 14 June 54 SCALE 1" = 400'

STATE OF WEST VIRGINIA
 DEPARTMENT OF MINES
 OIL AND GAS DIVISION
 CHARLESTON

WELL LOCATION MAP

FILE NO. Wet-404-Redrill

+ DENOTES LOCATION OF WELL ON UNITED STATES TOPOGRAPHIC MAPS. SCALE 1 TO 62,500. LATITUDE AND LONGITUDE LINES BEING REPRESENTED BY BORDER LINES AS SHOWN.

- DENOTES ONE INCH SPACES ON BORDER LINE OF ORIGINAL TRACING.



STATE OF WEST VIRGINIA
DEPARTMENT OF MINES
OIL AND GAS DIVISION

WELL RECORD

Quadrangle Littleton

Permit No. WET-1404

Oil or Gas Well Stor
(KIND)

Company THE MANUFACTURERS LIGHT AND HEAT COMPANY
Address 800 Union Trust Bldg., Pgh., Penna.

Farm Raymond D. Harlan Acres 10

Location (waters) _____

Well No. 1-4294 Elev. 1093.6

District Proctor County Wetzel

The surface of tract is owned in fee by _____
Address _____

Mineral rights are owned by _____
Address _____

Drilling commenced July 15, 1954

Drilling completed November 15, 1954

Date Shot _____ From _____ To _____

With _____

Open Flow 0 /10ths Water in 3/8 Inch

_____ /10ths Merc. in _____ Inch

Volume 00000 Cu. Ft.

Rock Pressure _____ lbs. _____ hrs.

Oil _____ bbls., 1st 24 hrs.

Fresh water _____ feet _____ feet

Salt water _____ feet _____ feet

Casing and Tubing	Used in Drilling	Left in Well	Packers
Size			Kind of Packer
16			
13			
10		204'0"	Size of
8 1/4		1036'0"	
6 3/8		1318'4"	Depth set
5 3/16		1796'0"	
3			Perf. top
2			Perf. bottom
Liners Used			Perf. top
			Perf. bottom

CASING CEMENTED _____ SIZE _____ No. Ft. _____ Date _____

COAL WAS ENCOUNTERED AT _____ FEET _____ INCHES
_____ FEET _____ INCHES _____ FEET _____ INCHES
_____ FEET _____ INCHES _____ FEET _____ INCHES

Formation	Color	Hard or Soft	Top	Bottom	Oil, Gas or Water	Depth Found	Remarks
Top of Maxon Sand			1826		Schlumberger Measurement		
Bottom of Maxon Sand			1832	1832	5 1/2" Delivery Strong set at 1777'		
Total Depth			1832	1832	10-3/4" casing not cemented		
					8-5/8" casing cemented with 300 bags cement no return		
					7" casing cemented with 200 bags cement good return		
					5 1/2" casing cemented with 185 bags cement good return		

