

COAL OWNED BY Roosevelt Coal & Coke Co.
 Storage
 NEW LOCATION
 DRILL DEEPER
 ABANDONMENT issued 9-14-70

COMPANY The Manufacturers Light & Heat
 ADDRESS 800 Union Trust Bldg. Pgh. Pa.
 FARM J.E. (Otis) Simmons et al.
 TRACT _____ ACRES 113 LEASE NO. 26464
 WELL (FARM) NO. 1 SERIAL NO. 4297
 ELEVATION (SPIRIT LEVEL) 1339'
 QUADRANGLE Littleton NW
 COUNTY Wetzel DISTRICT Proctor
 ENGINEER Thomas E. Virgin - J.M.
 ENGINEER'S REGISTRATION NO. 1503
 FILE NO. _____ DRAWING NO. R-15-31
 DATE 17 June 54 SCALE 1" = 800'

STATE OF WEST VIRGINIA
 DEPARTMENT OF MINES
 OIL AND GAS DIVISION
 CHARLESTON

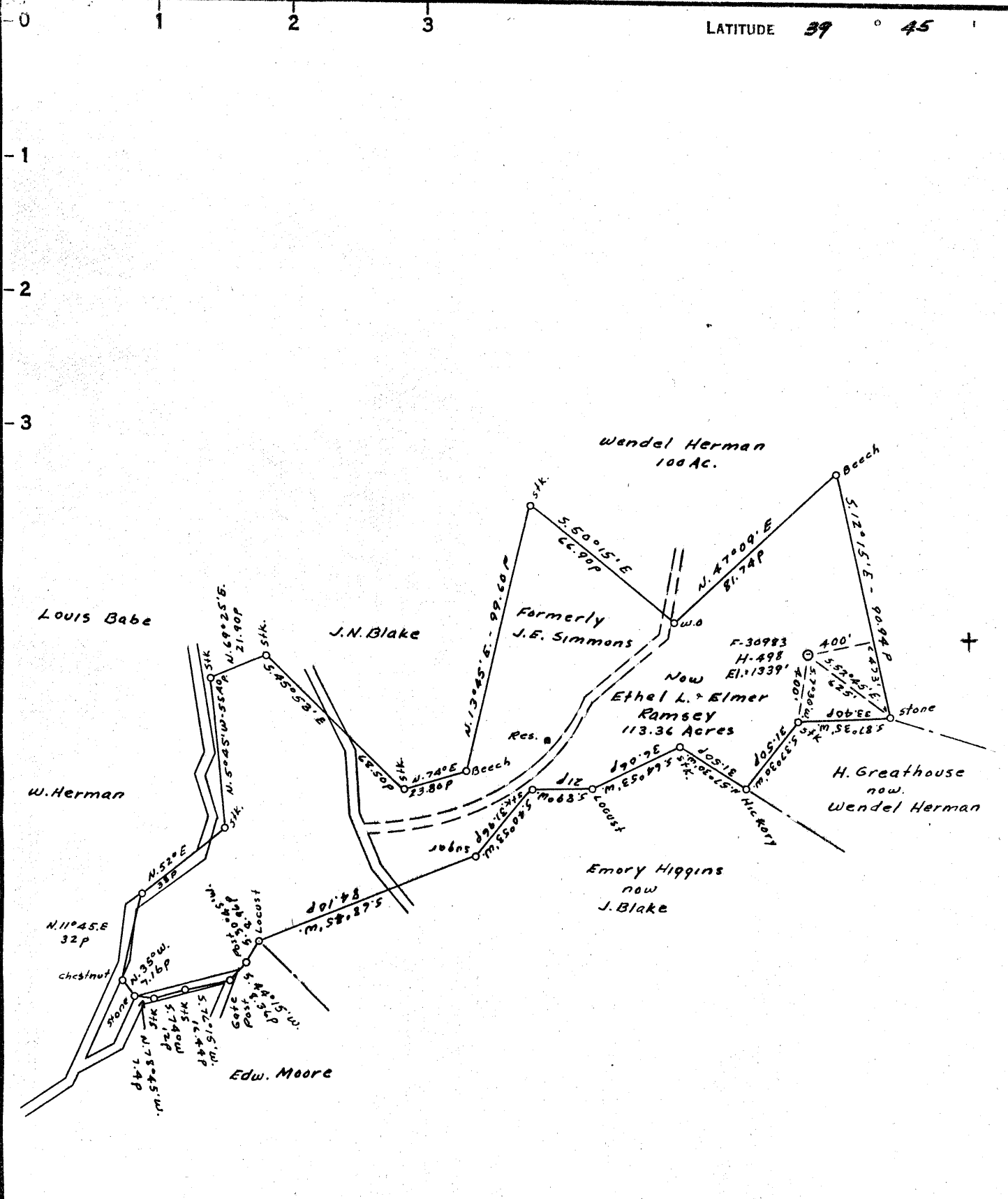
WELL LOCATION MAP

FILE NO. Wet. 406-REDRILL-P
401, 396 87?, 90, 91?

+ DENOTES LOCATION OF WELL ON UNITED STATES TOPOGRAPHIC MAPS, SCALE 1 TO 62,500. LATITUDE AND LONGITUDE LINES BEING REPRESENTED BY BORDER LINES AS SHOWN.

- DENOTES ONE INCH SPACES ON BORDER LINE OF ORIGINAL TRACING.

9-0 36



COAL OWNED BY _____
 Storage X

NEW LOCATION.....

DRILL DEEPER.....

ABANDONMENT.....

COMPANY The Manufacturers Light & Heat

ADDRESS 800 Union Trust Bldg. Pgh. Pa.

FARM Otis Simmons et. al.

TRACT _____ ACRES 113 LEASE No. 26464

WELL (FARM) No. 1 SERIAL No. F-30983

ELEVATION (SPIRIT LEVEL) 1339'

QUADRANGLE Littleton

COUNTY Wetzel DISTRICT Proctor

ENGINEER Thomas E. Virgin - J.M.

ENGINEER'S REGISTRATION No. 1503

FILE No. _____ DRAWING No. Y-15-31

DATE 17 June 54 SCALE 1" = 800'

STATE OF WEST VIRGINIA
 DEPARTMENT OF MINES
 OIL AND GAS DIVISION
 CHARLESTON

WELL LOCATION MAP

FILE No. Wet-406-REDRILL

+ DENOTES LOCATION OF WELL ON UNITED STATES TOPOGRAPHIC MAPS, SCALE 1 TO 62,500. LATITUDE AND LONGITUDE LINES BEING REPRESENTED BY BORDER LINES AS SHOWN.

- DENOTES ONE INCH SPACES ON BORDER LINE OF ORIGINAL TRACING.



STATE OF WEST VIRGINIA
DEPARTMENT OF MINES
OIL AND GAS DIVISION

Quadrangle Litchton

Permit No. WET-406-R

WELL RECORD

Oil or Gas Well Stor.

(KIND)

Company THE MANUFACTURERS LIGHT AND HEAT CO.
Address 800 UNION TRUST BLDG., PGH., PENNA.
Farm J. E. Simmons Acres 113
Location (waters) _____
Well No. 1-4297 Elev. 1339'
District Proctor County Wetzel
The surface of tract is owned in fee by _____
Address _____
Mineral rights are owned by _____
Address _____
Drilling commenced September 30, 1954
Drilling completed December 14, 1954
Date Shot _____ From _____ To _____
With _____
Open Flow 4/10ths Water in 1/4 Inch
_____ /10ths Merc. in _____ Inch
Volume 3.099 Cu. Ft.
Rock Pressure _____ lbs. _____ hrs.
Oil _____ bbls., 1st 24 hrs.
Fresh water _____ feet _____ feet
Salt water _____ feet _____ feet

Casing and Tubing	Used in Drilling	Left in Well	Packers
Size			
16			Kind of Packer
13		191'0"	
10		1117'0"	Size of
8 1/4		1460'0"	
6 7/8		2187'0"	Depth set
5 3/16			
3			Perf. top
2			Perf. bottom
Liners Used			Perf. top
			Perf. bottom

CASING CEMENTED _____ SIZE _____ No. Ft. _____ Date _____

COAL WAS ENCOUNTERED AT _____ FEET _____ INCHES
_____ FEET _____ INCHES _____ FEET _____ INCHES
_____ FEET _____ INCHES _____ FEET _____ INCHES

Formation	Color	Hard or Soft	Top	Bottom	Oil, Gas or Water	Depth Found	Remarks
Cleaned out to Cement			2702	2702	Schlumberger Measurement		
6" Lead Plug				2343			
Cement & Stones			2343	2310	7" Delivery String set at 2164'		
6" Lead Plug				2310	13-3/8" casing not cemented		
Cement & Stones			2310	2215	10 3/4" casing cemented with 350 bags cement no return		
8" Lead Plug				2215			
Cement & Stones			2215	2187	8 5/8" casing cemented with 225 bags cement good return		
8" Lead Plug				2187			
Total Depth				2187			
✓ Top of Maxon Sand			2164		7" casing cemented with 200 bags cement good return		
Bottom of Maxon Sand				2192			

