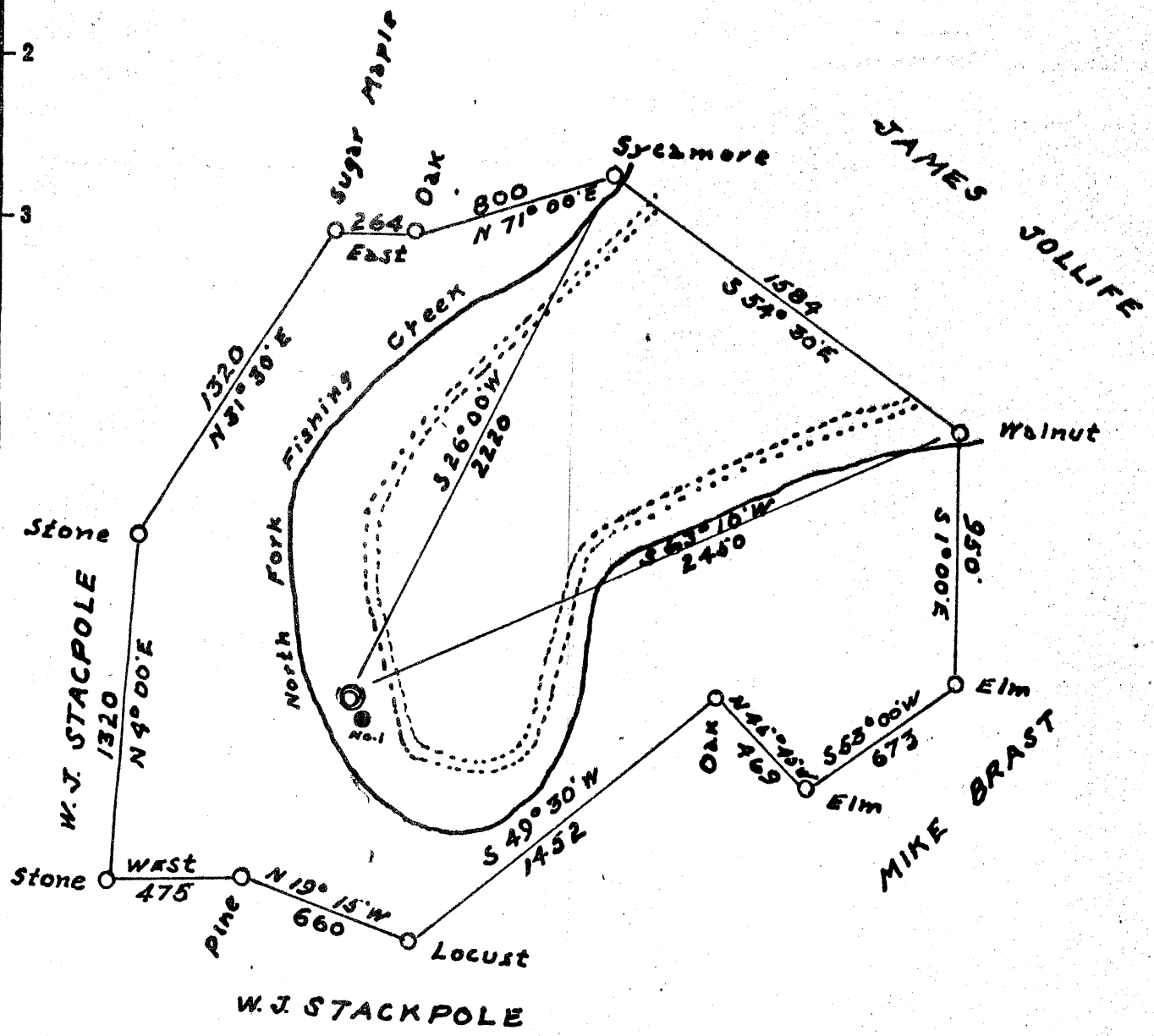


Latitude 39° 35'

Longitude 80° 35'

J.A. LANTZ

JAMES JOLLIFE



- New Location..
- Drill Deeper.....
- Abandonment.....

Company LOWTHER & BAKER

Address MIDDLEBOURN W.Va.

Farm WORTH JACOBS

Tract _____ Acres 106 Lease No. _____

Well (Farm) No. THREE Serial No. _____

Elevation (Spirit Level) 730

Quadrangle LITTLETON

County WETZEL District GRANT

Engineer H.T.M. Antine

Engineer's Registration No. 1187

File No. _____ Drawing No. _____

Date Nov 14, 1935 Scale 1" = 600'

STATE OF WEST VIRGINIA
DEPARTMENT OF MINES
OIL AND GAS DIVISION
CHARLESTON

WELL LOCATION MAP
FILE NO. Wet-423

+ Denotes location of well on United States Topographic Maps, scale 1 to 62,500, latitude and longitude lines being represented by border lines as shown.

- Denotes one inch spaces on border line of original tracing.