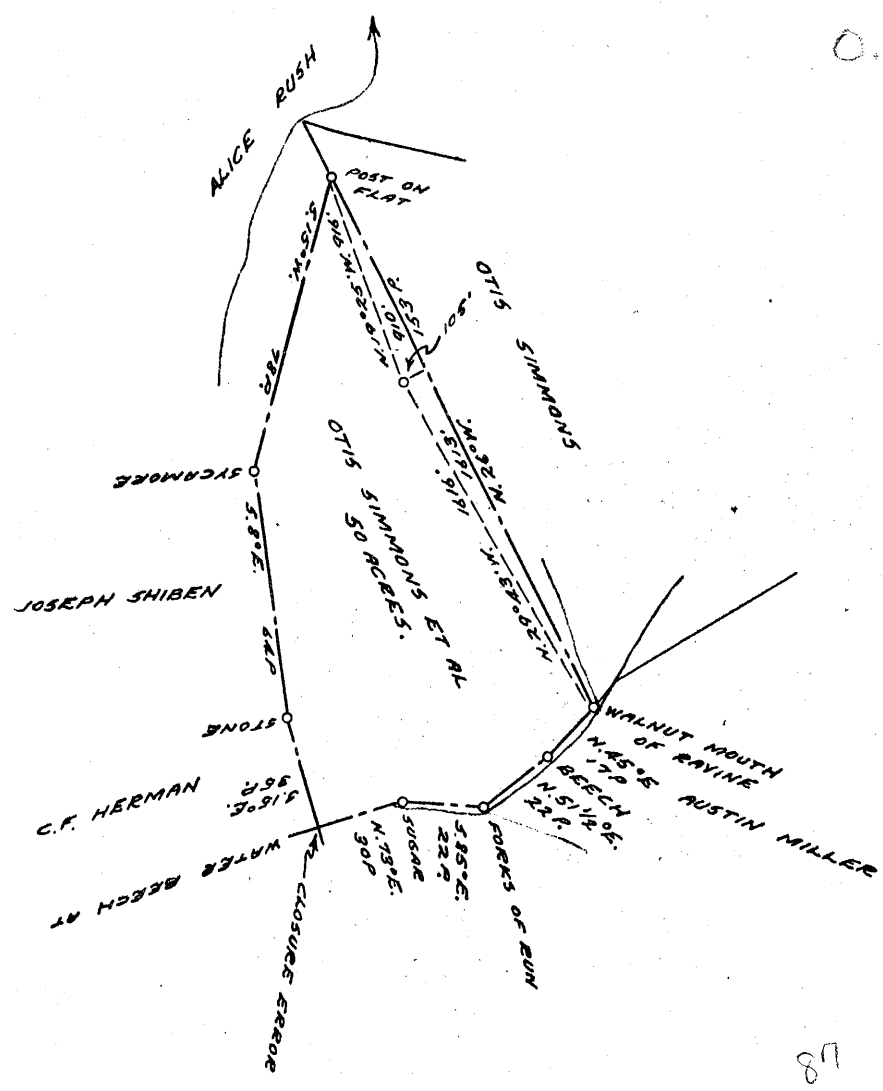


LATITUDE 39 0 45 1

LONGITUDE 80 0 40

3.275  
0.05W



NOTE

87

COAL OWNED BY Thomas E. Graham, Stern Bros., Inc.  
RECONITION

NEW LOCATION.....

DRILL DEEPER.....

ABANDONMENT.....

COMPANY THE MANUFACTURERS LIGHT & HEAT

ADDRESS 800 UNION TRUST BLDG. DGH. PA.

FARM OTIS SIMMONS ET AL

TRACT \_\_\_\_\_ ACRES 50 LEASE No. 26458

WELL (FARM) No. 1 SERIAL No. F-12752 4269

ELEVATION (SPIRIT LEVEL) 1307'

QUADRANGLE LITTLETON NW

COUNTY WETZEL DISTRICT PROCTOR

ENGINEER Thomas E. Virgin - J.M.

ENGINEER'S REGISTRATION No. 1503

FILE No. \_\_\_\_\_ DRAWING No. Y-15-330

DATE 20 JAN. 1956 SCALE 1"=800'

STATE OF WEST VIRGINIA  
DEPARTMENT OF MINES  
OIL AND GAS DIVISION  
CHARLESTON

### WELL LOCATION MAP

FILE No. Wet-426

+ DENOTES LOCATION OF WELL ON UNITED STATES TOPOGRAPHIC MAPS. SCALE 1 TO 62,500. LATITUDE AND LONGITUDE LINES BEING REPRESENTED BY BORDER LINES AS SHOWN.

- DENOTES ONE INCH SPACES ON BORDER LINE OF ORIGINAL TRACING.

90-0-36



STATE OF WEST VIRGINIA  
DEPARTMENT OF MINES  
OIL AND GAS DIVISION

Quadrangle Richita

WELL RECORD

Permit No. WET-426

Oil or Gas Well Gas  
(KIND)

Company THE MANUFACTURERS LIGHT AND HEAT COMPANY  
Address 800 UNION TRUST BUILDING, PITTSBURGH, PA.  
Farm Max Schuyler (17 1/2 acres) Acres 50  
Location (waters) \_\_\_\_\_  
Well No. 4269 (F-12752) Elev. 1507  
District Proctor County Wetzel  
The surface of tract is owned in fee by \_\_\_\_\_  
Address \_\_\_\_\_  
Mineral rights are owned by \_\_\_\_\_  
Address \_\_\_\_\_  
Drilling commenced October 31, 1953  
Drilling completed November 3, 1953  
Date Shot \_\_\_\_\_ From \_\_\_\_\_ To \_\_\_\_\_  
With \_\_\_\_\_  
Open Flow \_\_\_\_\_ /10ths Water in \_\_\_\_\_ Inch  
\_\_\_\_\_ /10ths Merc. in \_\_\_\_\_ Inch  
Volume \_\_\_\_\_ Cu. Ft.  
Rock Pressure \_\_\_\_\_ lbs. \_\_\_\_\_ hrs.  
Oil \_\_\_\_\_ bbls., 1st 24 hrs.  
Fresh water \_\_\_\_\_ feet \_\_\_\_\_ feet  
Salt water \_\_\_\_\_ feet \_\_\_\_\_ feet

Casing and Tubing	Used in Drilling	Left in Well	Packers
Size			
16			Kind of Packer
13			
10		395'8"	Size of
8 1/4		1340'0"	
6 5/8		1925'11"	Depth set
5 3/16		2123'9"	Measured with threads on.
3			Perf. top
2			Perf. bottom
Liners Used			Perf. top
			Perf. bottom

CASING CEMENTED \_\_\_\_\_ SIZE \_\_\_\_\_ No. Ft. \_\_\_\_\_ Date \_\_\_\_\_  
COAL WAS ENCOUNTERED AT \_\_\_\_\_ FEET \_\_\_\_\_ INCHES  
\_\_\_\_\_ FEET \_\_\_\_\_ INCHES \_\_\_\_\_ FEET \_\_\_\_\_ INCHES  
\_\_\_\_\_ FEET \_\_\_\_\_ INCHES \_\_\_\_\_ FEET \_\_\_\_\_ INCHES

Formation	Color	Hard or Soft	Top	Bottom	Oil, Gas or Water	Depth Found	Remarks
Top of Maxon Sand			2110				
Bottom of Maxon Sand			2130				
Set Lead Plug			2130				
Total Depth			2131				
Cement			0	18	18		
Mud			18	150	132		
Cement			150	175	25		
Mud			175	270	95		
Cement			270	325	155		
Mud			325	400	75		
Cement			400	430	30		
Mud			430	700	270		
Cement			700	756	56		
Red Mud			756	770	14		
Open Hole			770	1300	530		
Red Mud			1300	1400	100		
Cement			1400	1460	60		
Mud			1460	1550	90		
Cement			1515	1530	15		
Mud			1530	1710	180		
Cement			1710	1760	50		
Mud			1760	1850	90		
Cement			1850	1897	47		
Mud			1975	2000	25		
Red Mud			2000	2113	113		
Lime			2113	2117	10		
Maxon Sand			2110	2131			
Slate White			2131	2123			
Slate Dark			2133	2148			

