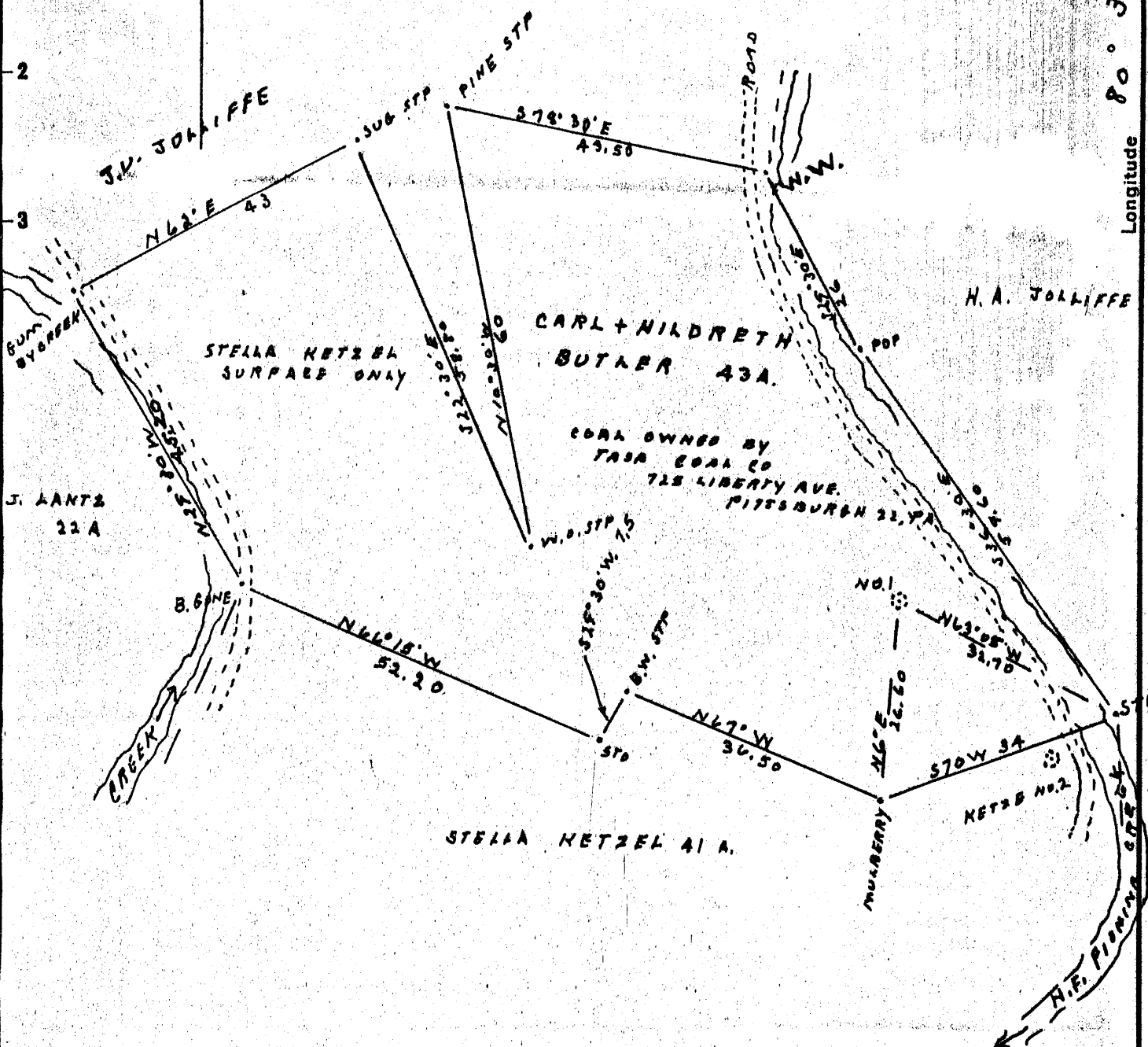


Latitude 39° 35'

Longitude 80° 35'

0.46 S  
3.43 W



New Location   
 Drill Deeper   
 Abandonment

A. B. LOWMYER AGT  
 Company PINE RUN DEVELOPMENT CO  
 Address MIDDLE BOURNE W. VA.  
 Farm CARL AND HILDRETH BUTLER  
 Tract 1 Acres 43 Lease No. \_\_\_\_\_  
 Well (Farm) No. 1 Serial No. \_\_\_\_\_  
 Elevation (Spirit Level) 965.5  
 Quadrangle LITTLETON  
 County WETZEL District GRANT  
 Engineer J. M. Cochran  
 Engineer's Registration No. C.D. SURVEYOR  
 File No. \_\_\_\_\_ Drawing No. \_\_\_\_\_  
 Date 6-16-56 Scale 1" = 20000

STATE OF WEST VIRGINIA  
 DEPARTMENT OF MINES  
 OIL AND GAS DIVISION  
 CHARLESTON

WELL LOCATION MAP  
 FILE NO. Wet-436

+ Denotes location of well on United States Topographic Maps, scale 1 to 62,500, latitude and longitude lines being represented by border lines as shown.

- Denotes one inch spaces on border line of original tracing.



STATE OF WEST VIRGINIA  
DEPARTMENT OF MINES  
OIL AND GAS DIVISION

Quadrangle Lickton

WELL RECORD

Permit No. Wet-436

Oil or Gas Well Gas  
(KIND)

Company Pine Run Development Co.  
Address Middlebourne, W.Va. c/o A. B. Lowther  
Farm Stella Ketzal (Butler) Acres 43  
Location (waters) North Fork of Fishing Creek  
Well No. 1 Elev. 865  
District Grant County Wetzel  
The surface of tract is owned in fee by Stella Ketzal  
Address Pine Grove  
Mineral rights are owned by Carl & Hildreth Butler  
Address Pine Grove  
Drilling commenced Aug. 10, 1956  
Drilling completed Aug. 25, 1956  
Date Shot 8/26/1956 From 594 To 596  
With 12 lb. gelatin  
Open Flow 2/10ths Water in 3/4 Inch  
         /10ths Merc. in          Inch  
Volume 12000 Cu. Ft.  
Rock Pressure Not taken lbs.          hrs.  
Oil          bbls., 1st 24 hrs.  
Fresh water 90 feet          feet  
Salt water          feet          feet

Casing and Tubing	Used in Drilling	Left in Well	Packers
Size			
16			Kind of Packer
13			
10			Size of
8 1/4			
6 5/8	200 ft	200 ft	Depth set
5 3/16			
3			Perf. top
2	609 ft	609 ft	Perf. bottom
Liners Used 5"	120 ft	120 ft	Perf. top
			Perf. bottom

CASING CEMENTED          SIZE          No. Ft.          Date           
COAL WAS ENCOUNTERED AT 491 FEET 24 INCHES  
568 FEET 24 INCHES 593 FEET 43 INCHES  
         FEET          INCHES          FEET          INCHES

Formation	Color	Hard or Soft	Top	Bottom	Oil, Gas or Water	Depth Found	Remarks
Soil &							
Red Rock			0	10'			
Sand			20	30			
Slate & Shell			30	80			
Sand			80	90			
Slate & Shell			90	160			
Sand			160	170			
Slate & Lime			170	255			
Sand			255	270			
Lime			270	275	565		
Sand			275	282	573		
Redrock			282	304	577		
Sand			304	310			
Redrock			310	325			
Slate & Lime			325	375			
Redrock			375	392			
Sand			392	405			
Lime			405	480			
Slate			480	491			
Coal			491	493			
Slate & Lime			493	568			
Coal			568	570			
Slate			570	576			
Lime			576	585			
Slate			585	593			
Coal Pkg.			593	597	Gas		
Slate			597	609			
TOTAL DEPTH				609			

