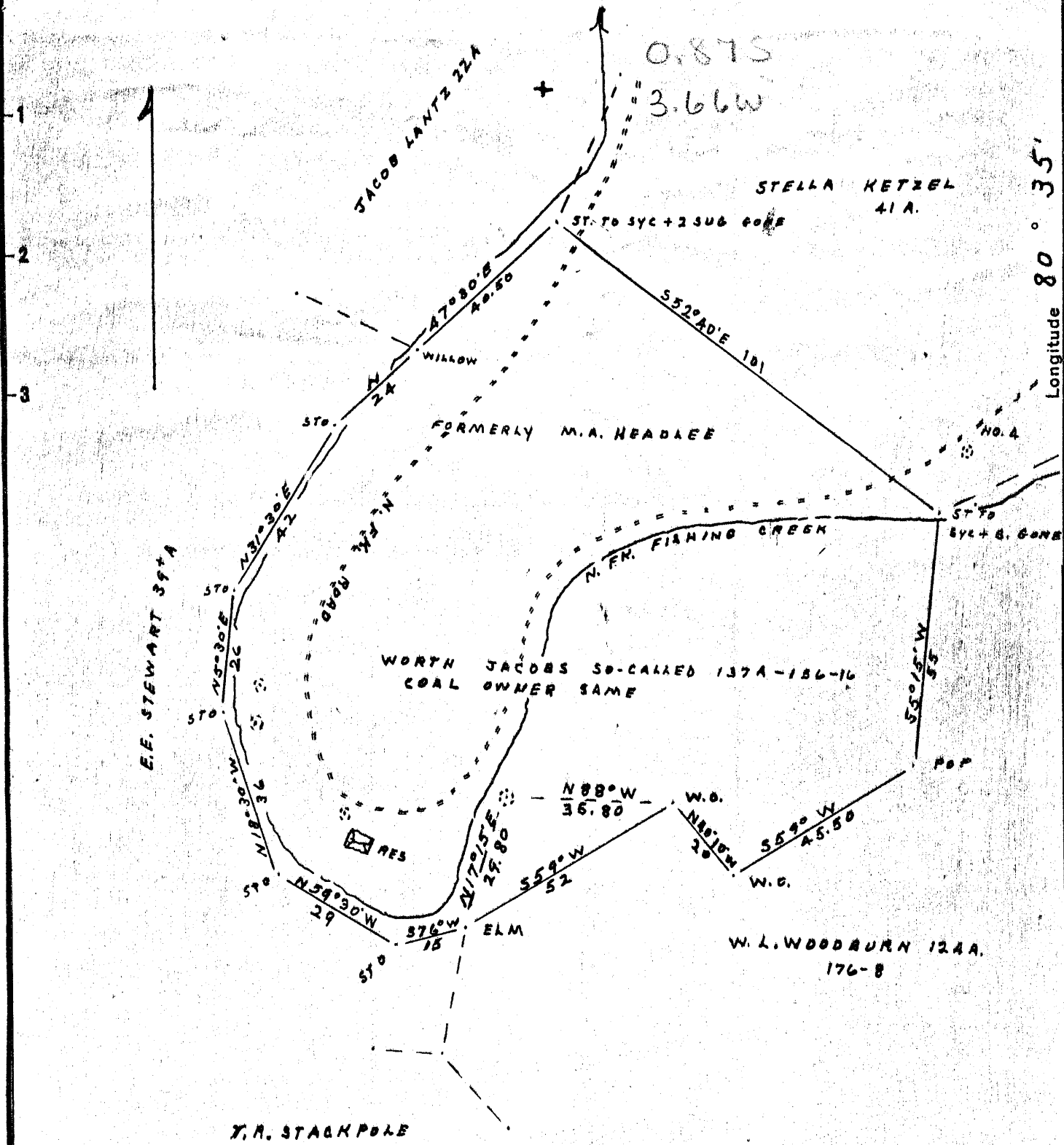


Latitude 39° 35'

Longitude 80° 35'



New Location..   
 Drill Deeper.....   
 Abandonment.....

A. S. LOWMYER REP.  
 Company PINE RUN DEVELOPMENT CO.  
 Address MIDDLEBOURNE, W. VA.  
 Farm WORTH JACOBS  
 Tract \_\_\_\_\_ Acres 137 Lease No. \_\_\_\_\_  
 Well (Farm) No. 4 Serial No. \_\_\_\_\_  
 Elevation (Spirit Level) 743  
 Quadrangle LITTLETON  
 County WETZEL District GRANT  
 Engineer J. M. Cochran  
 Engineer's Registration No. CO. SURVEYOR  
 File No. \_\_\_\_\_ Drawing No. \_\_\_\_\_  
 Date 10-8-56 Scale 1" = 30' P.D.

STATE OF WEST VIRGINIA  
 DEPARTMENT OF MINES  
 OIL AND GAS DIVISION  
 CHARLESTON

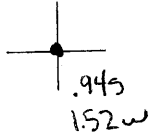
**WELL LOCATION MAP**  
 FILE NO. WCT-440

+ Denotes location of well on United States Topographic Maps, scale 1 to 62,500, latitude and longitude lines being represented by border lines as shown.

- Denotes one inch spaces on border line of original tracing.

6-c 4P

Latitude



Longitude

Topo Location

7.5' Loc. \_\_\_\_\_ 15' Loc. \_\_\_\_\_  
 \_\_\_\_\_ (calc.) \_\_\_\_\_

Company Pine Run Dev. Co

Farm Worth Jacobs #4

15' Quad \_\_\_\_\_  
(sec.)

7.5' Quad Pine Grove

District Grant

WELL LOCATION PLAT

County 103 Permit 440

WEST VIRGINIA DEPARTMENT OF MINES  
OIL AND GAS DIVISION

WELL RECORD

*Sidleton*  
Permit No. *Well 440*

Oil or Gas Well Gas  
(Kind)

Company Pine Run Development Co.  
Address Middlebourne, W. Va.  
Farm Worth Jacobs Acres 1.37  
Location (waters) North Fork Creek  
Well No. Four Elev. 743  
District Grant County Wetzel  
The surface of tract is owned in fee by Worth Jacobs  
Address Fairmont, W. Va.  
Mineral rights are owned by Same  
Address \_\_\_\_\_  
Drilling commenced 10/25/1956  
Drilling completed 11/5/1956  
Date shot Not shot Depth of shot - - -  
Open Flow 2 /10ths Water in 1 Inch  
/10ths Merc. in \_\_\_\_\_ Inch  
Volume 20,000 Cu. Ft.  
Rock Pressure Not taken lbs. - - - hrs.  
Oil None bbls., 1st 24 hrs.  
Fresh water at 20 feet at 80 feet  
Salt water None feet \_\_\_\_\_ feet

Casing and Tubing	Used in Drilling	Left in Well	Packers
Size			Kind of Packer
16			
13			
10			Size of
8 1/4	21 ft	None	
6 5/8	117 "	"	Depth set
5 3/16	166 "	Yes	
8			Perf. top
2			Perf. bottom
Liners Used			Perf. top
			Perf. bottom

CASING CEMENTED \_\_\_\_\_ SIZE \_\_\_\_\_ No. FT. \_\_\_\_\_ Date \_\_\_\_\_

COAL WAS ENCOUNTERED AT 365 FEET 12 INCHES  
479 FEET 60 INCHES FEET \_\_\_\_\_ INCHES  
FEET \_\_\_\_\_ INCHES FEET \_\_\_\_\_ INCHES

Formation	Color	Hard or Soft	Top	Bottom	Oil Gas or Water	Depth Found	Remarks
Sand & Gravel			0	30			
"			30	50			
Slate & Lime			50	130			
Sand			130	145			
Slate & Lime			145	200			
Sand			200	212			
Redrock			212	225			
Slate			225	240			
Sand			240	255			
Lime			255	261			
Redrock			261	295			
Lime			295	305			
Redrock			305	315			
Lime			315	365			
Mapletown Coal			365	366			
Lime			366	386			
Slate			386	410			
Lime			410	418			
Slate			418	438			
Lime			438	442			
Slate			442	447			
Lime			447	458			
Slate			458	474			
Pgh Coal			474	479			Gas
Slate			479	494			
TOTAL DEPTH				494			

