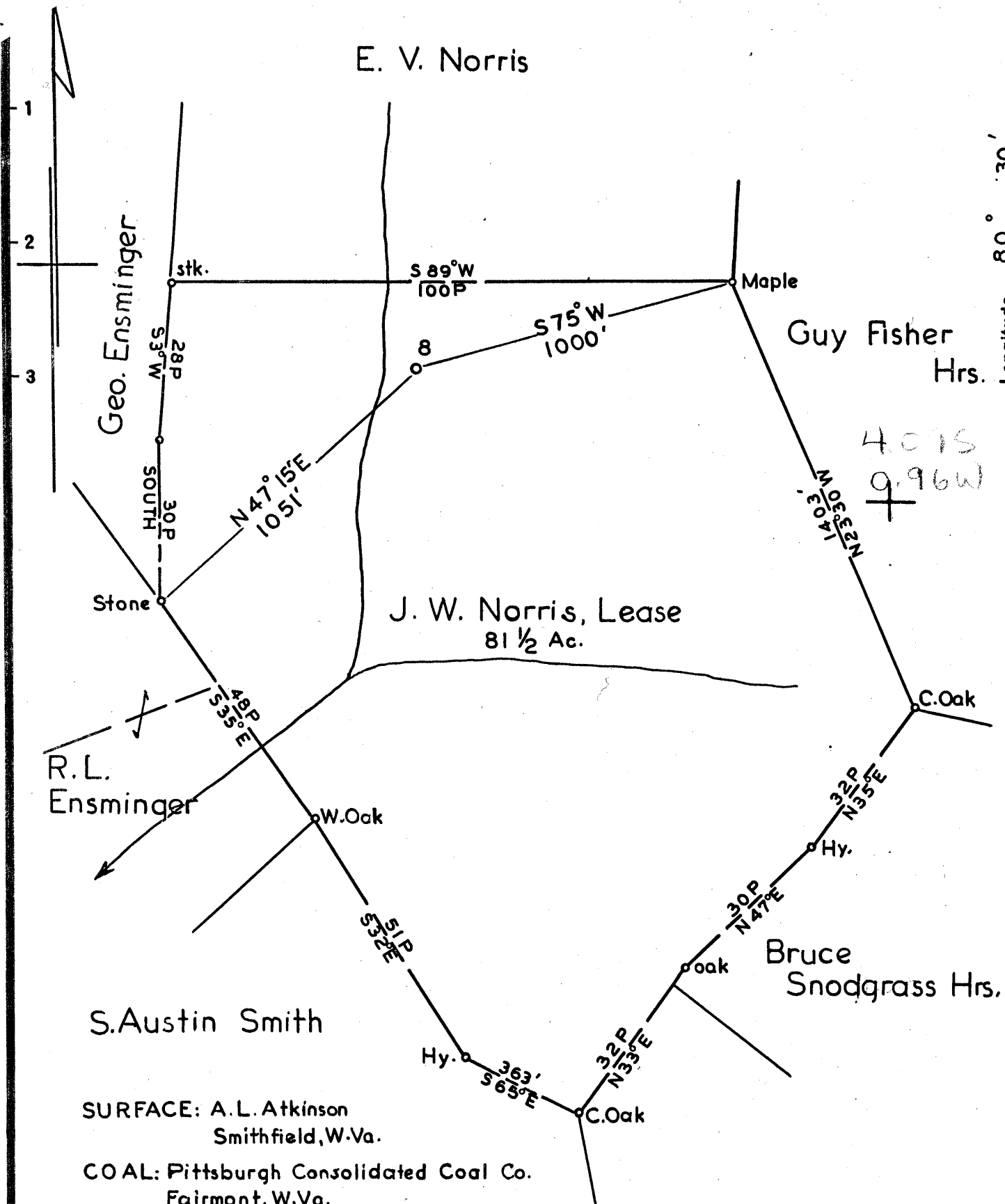


E. V. Norris



J. W. Norris, Lease
81 1/2 Ac.

SURFACE: A. L. Atkinson
Smithfield, W. Va.
COAL: Pittsburgh Consolidated Coal Co.
Fairmont, W. Va.

- New Location...
- Drill Deeper.....
- Abandonment.....

Map N59 N6 E6

Company South Penn Natural Gas Co.
 Address Parkersburg, West Virginia
 Farm J. W. Norris
 Tract _____ Acres 81 1/2 Lease No. 10060
 Well (Farm) No. 8 Serial No. _____
 Elevation (Spirit Level) 1096.45
 Quadrangle Littleton
 County Wetzel District Grant
 Engineer Mr. S. Hayes
 Engineer's Registration No. 1429
 File No. _____ Drawing No. _____
 Date March 20, 1957 Scale 1"=400'

STATE OF WEST VIRGINIA
DEPARTMENT OF MINES
OIL AND GAS DIVISION
CHARLESTON

WELL LOCATION MAP
FILE NO. Wet-446

+ Denotes location of well on United States Topographic Maps, scale 1 to 62,500, latitude and longitude lines being represented by border lines as shown.

- Denotes one inch spaces on border line of original tracing.

6-6 45 101



STATE OF WEST VIRGINIA
DEPARTMENT OF MINES
OIL AND GAS DIVISION 6

Littleton

WELL RECORD

Permit No. WET-446

Oil or Gas Well Oil
(KIND)

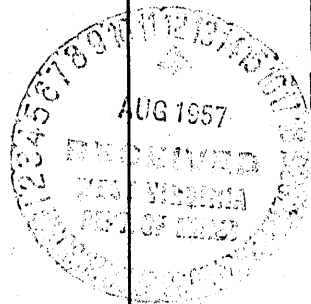
Company SOUTH PENN NATURAL GAS COMPANY
Address Union Trust Bldg., Parkersburg, W. Va.
Farm J. W. Norris Acres 81-1/2
Location (waters) _____
Well No. 8 Elev. 1096.45 Gr.
District Grant County Wetzel
The surface of tract is owned in fee by A. L. Atkinson
Address Smithfield, W. Va.
Mineral rights are owned by First Exchange Bank, et al.
Address Mannington, W. Va.
Drilling commenced May 3, 1957
Drilling completed June 20, 1957
Date Shot June 25, 1957 From 2253' To 2260'
With 10 qts.
Open Flow _____ /10ths Water in _____ Inch
_____ /10ths Merc. in _____ Inch
Volume 181,000 Cu. Ft.
Rock Pressure _____ lbs. _____ hrs.
Oil 2 bbl. b.s.s.; 8 bbl. a.s.s. bbls., 1st 24 hrs.
Fresh water 490 feet
Salt water _____ feet

Casing and Tubing	Used in Drilling	Left in Well	Packers
Size			Kind of Packer
16			No packers set
13			Size of
10-3/4	321	321	Depth set
8 1/2 x 5/8	1250	1250	Perf. top
6%	2108	2108	Perf. bottom
5 3/16			Perf. top
3			Perf. bottom
2			Perf. top
Liners Used			Perf. bottom

CASING CEMENTED _____ SIZE _____ No. Ft. _____ Date _____

COAL WAS ENCOUNTERED AT 330 FEET _____ INCHES
_____ FEET _____ INCHES FEET _____ INCHES
_____ FEET _____ INCHES FEET _____ INCHES

Formation	Color	Hard or Soft	Top	Bottom	Oil, Gas or Water	Depth Found	Remarks
Conductor			0	14			
Lime			14	20			
Slate			20	30			
Lime			30	60			
Slate			60	85			
Lime			85	115			
Gritty Lime			115	135			
Gritty Lime			135	185			
Slate Shells			185	225			
Lime			225	245			
Slate Shells			245	300			
Lime			300	330			
Coal blossom			330				
Slate Shells			330-460				
Sand			460	490		490	Little water
Lime			490	860			
Phg. Coal			860	865			
Lime			865	930			
Slate Shells			930	1040			
Shark Sand			1040	1070			
Slate Shells			1070	1100			
Slate Shells			1100	1250			
Sand			1250	1275			
Slate			1275	1295			
Sand - Big Drunk?			1295	1350			
Slate Shells			1350	1370			
Sand			1370	1400			
Slate Shells			1400	1435			
Sand			1435	1465			
Slate Shells			1465	1525			
Sand			1525	1540			
Slate			1540	1560			
Sand			1560	1590			



1096
565
231

Formation	Color	Hard or Soft	Top 6	Bottom	Oil, Gas or Water	Depth Found	Remarks
	(Continued from other side)						
Slate			1590	1675			
Sand - <i>Sea Sand</i>			1675	1705			
Limey Shale			1705	1755		1685	Water to drill with
Sand - <i>Sea Sand</i>			1755	1865			
Slate			1865	1950	Water	1815	2 bailers hour
Gritty Lime			1950	1970			
Sand - <i>Marl</i>			1970	2000			
Slate			2000	2060			
Lime - <i>Thin</i>			2060	2075			
Slate - <i>Thin</i>			2070	2080			
Big Lime			2080	2160			
Big Injun			2160				
					Gas 1st pay	2238	1.4" w/3/4" 15,378
					Gas 2nd pay	2253	181,000
					Oil	2253-1/2	2 bbl. da.
	TOTAL DEPTH			2282			

Date August 9, 19 57.

APPROVED SOUTH PENN NATURAL GAS COMPANY, Owner

By George W. Wilsman, Agent