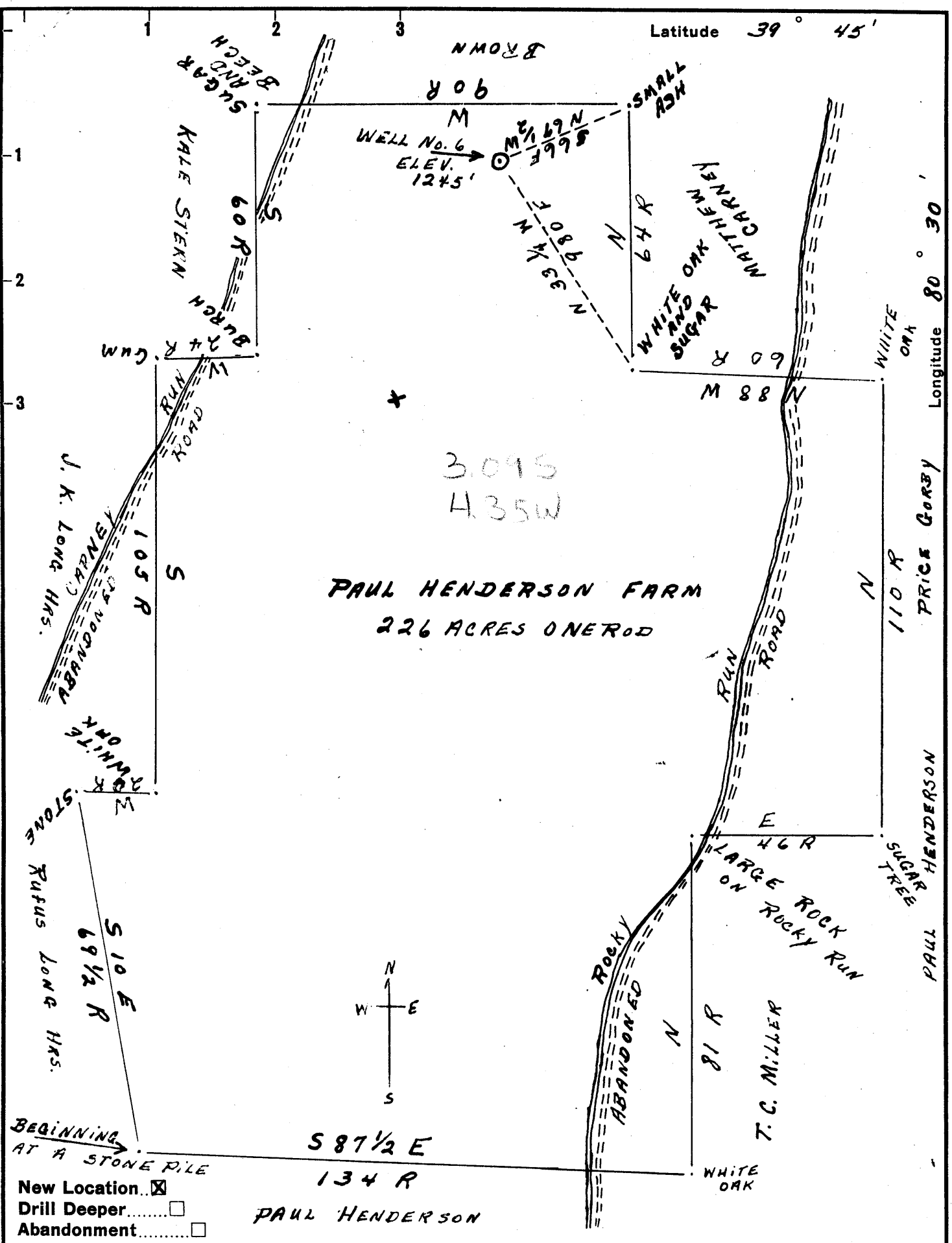


M

Latitude 39° 45'

Longitude 80° 30'



Company KNAPP'S OIL AND GAS CO.  
 Address NEW MARTINSVILLE, W.VA.  
 Farm PAUL HENDERSON  
 Tract 1 Acres 226 Lease No. \_\_\_\_\_  
 Well (Farm) No. 6 Serial No. \_\_\_\_\_  
 Elevation (Spirit Level) 1245'  
 Quadrangle LITTLETON NE  
 County WETZEL District CENTER  
 Engineer Harvey Jarimore  
 Engineer's Registration No. CO. SURVEYOR  
 File No. \_\_\_\_\_ Drawing No. \_\_\_\_\_  
 Date Aug. 8, 1960 Scale 1-INCH = 495'

STATE OF WEST VIRGINIA  
 DEPARTMENT OF MINES  
 OIL AND GAS DIVISION  
 CHARLESTON

WELL LOCATION MAP  
 FILE NO. WET-481

+ Denotes location of well on United States Topographic Maps, scale 1 to 62,500, latitude and longitude lines being represented by border lines as shown.

- Denotes one inch spaces on border line of original tracing.

6-6 42



STATE OF WEST VIRGINIA  
DEPARTMENT OF MINES  
OIL AND GAS DIVISION / 8

Quadrangle LITTLETON

Permit No. Wet. 481

WELL RECORD

Oil or Gas Well Oil &  
(KIND) GAS

Company Knapp Oil & Gas Co.  
Address New Martinsville, W. Va.  
Farm Paul Henderson Acres 226  
Location (waters) \_\_\_\_\_  
Well No. 6 Elev. 1245  
District Center County Wetzel  
The surface of tract is owned in fee by \_\_\_\_\_  
Address \_\_\_\_\_  
Mineral rights are owned by \_\_\_\_\_  
Address \_\_\_\_\_  
Drilling commenced October 17, 1960  
Drilling completed December 27, 1960  
Date Shot \_\_\_\_\_ From \_\_\_\_\_ To \_\_\_\_\_  
With \_\_\_\_\_  
Open Flow 40 10ths Water in 1" Inch  
\_\_\_\_\_/10ths Merc. in \_\_\_\_\_ Inch  
Volume 80,000 Cu. Ft.  
Rock Pressure 25 lbs. 48 hrs.  
Oil 10 bbls., 1st 24 hrs.  
WELL ACIDIZED \_\_\_\_\_

Casing and Tubing	Used in Drilling	Left in Well	Packers
Size			Kind of Packer _____
16			
13			
10	280'	Pulled	Size of _____
8 3/4	1635'	1635'	
6 3/8	2302'	2302'	Depth set _____
5 3/16			
3			Perf. top _____
2	3223'	3223'	Perf. bottom _____
Liners Used			Perf. top _____
			Perf. bottom _____

CASING CEMENTED \_\_\_\_\_ SIZE \_\_\_\_\_ No. Ft. \_\_\_\_\_ Date \_\_\_\_\_  
Coal 742-746'  
COAL WAS ENCOUNTERED AT 1016 FEET \_\_\_\_\_ INCHES  
1016 FEET \_\_\_\_\_ INCHES 1020 FEET \_\_\_\_\_ INCHES  
1122 FEET \_\_\_\_\_ INCHES 1130 FEET \_\_\_\_\_ INCHES

WELL FRACTURED \_\_\_\_\_

RESULT AFTER TREATMENT

ROCK PRESSURE AFTER TREATMENT

Fresh Water 2 bailers per hr Feet 190' Salt Water 2-8" Bals.pr hr Feet 2045'

Formation	Color	Hard or Soft	Top	Bottom	Oil, Gas or Water	Depth	Remarks
Clay			0	8			
Sand Rock			8	54			
Slate	White		54	65		1222	
Slate & Lime Shells			65	80			
Red Rock & Lime			80	115			
Slate Lime & Red Rock			115	184			
Sand			184	203			
Slate Lime & Red Rock			203	1016	Water	190	2 Bal.pr hr
Coal			1016	1020	Coal 742-746'		Ran 280' of
Lime & Shale			1020	1122			10" casing
Pgh Coal			1122	1130			
Lime, Slate & Red Rock			1130	1528			
Sand (Little Dunkard)			1528	1558			
Slate, Lime & Black Shale			1558	1618			
Sand (Big Dunkard)			1618	1642			
Shale & Lime			1642	1756			
Sand			1756	1828			
Shale & Lime Shells			1828	1928			
✓ Sand Salt			1928	1955			
Slate			1955	1994			
✓ Sand Salt			1994	2065	Salt Water		
Slate			2065	2124		2045'	2-8" Bailers per hr
✓ Sand Salt			2124	2165			
Slate			2165	2175			
✓ Sand (Max)			2175	2190			
Slate Red Rock & Shale			2190	2254			
✓ Little Lime			2254	2270			

Formation	Color	Hard or Soft	Top 18	Bottom	Oil, Gas or Water	Depth Found	Remarks
Pencil Cave			2270	2280			
Big Lime			2280	2335			Ran 2302' of 7" casing
Big Injun Sand			2335	2595	Gas	2345' - 2365'	
Shale & Lime Shells			2595	2930	30/10 thru 1" Water		
Sand			2930	2948	More Gas	2450' - 2470'	
Shale & Lime Shells			2948	3024			
Lime (Gritty)			3024	3040			
Pink Rock			3040	3048			
Slate & Shells			3048	3061			
Gritty Lime			3061	3080			S.L.M. 3171'
Gordon Stray Sand			3080	3177			Show of Oil
Slate			3177	3179			
Gordon Sand			3179	3210	Oil & Gas	3185 - 3188	
Slate			3210	3225	Approx. 10 to 20 Bbls. per 24 hrs. Gas 40/10 Thru 1" Water		
Total Depth			3225				

2280  
1245  
-----  
1035

Date February 20, 19 61  
 APPROVED Knapp Oil & Gas, Owner  
 By W. H. Knapp Supt.  
 (Title)