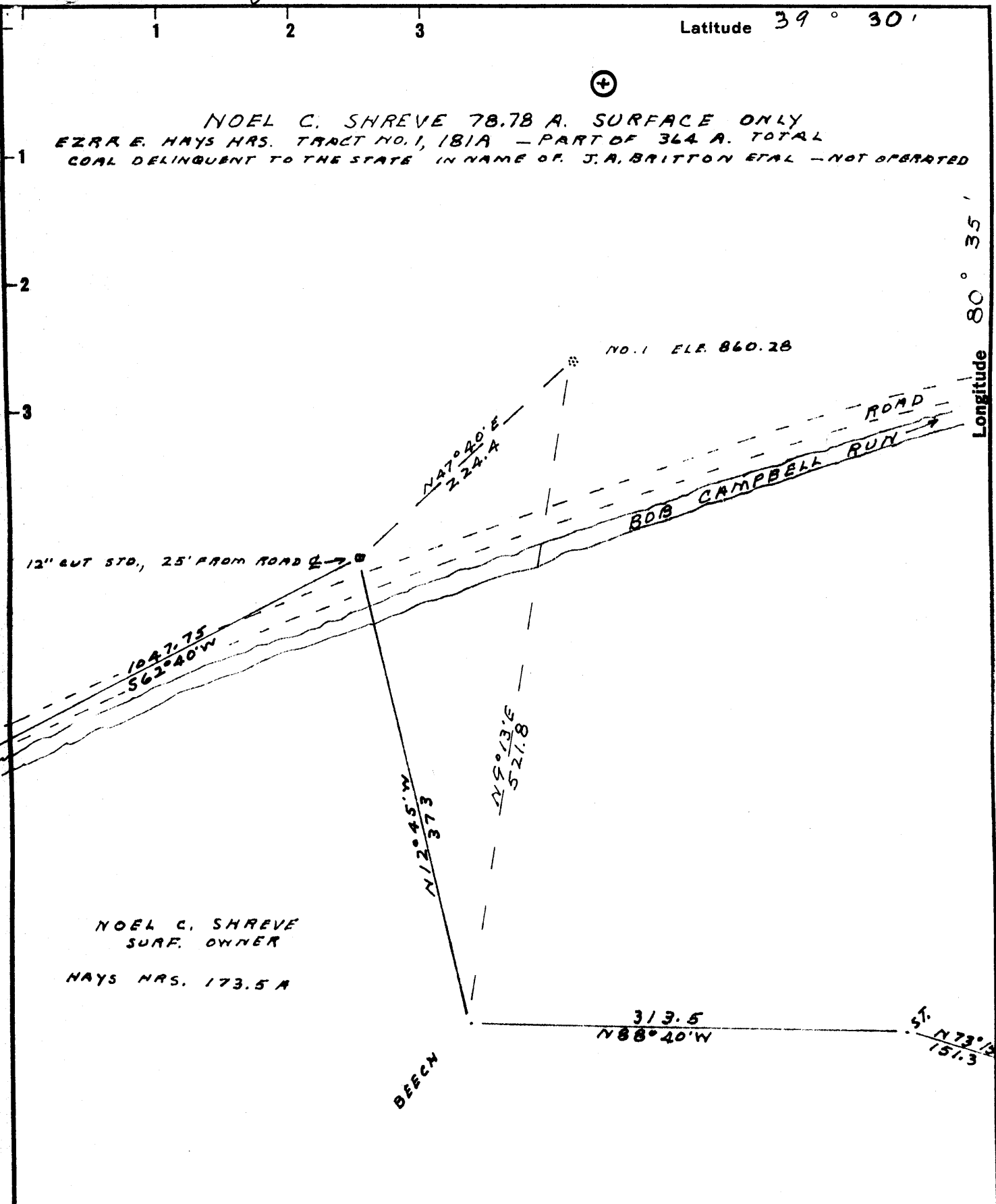


Latitude 39° 30'

NOEL C. SHREVE 78.78 A. SURFACE ONLY
 EZRA E. HAYS HRS. TRACT NO. 1, 181A - PART OF 364 A. TOTAL
 COAL DELINQUENT TO THE STATE IN NAME OF J. A. BRITTON ETAL - NOT OPERATED



Longitude 80° 35'

New Location
 Drill Deeper
 Abandonment issued 7/16/74

Company Prion Oil Company
~~Imperial Oil Co.~~
 Address Box 1486; Parkersburg, W. Va. 26101
~~19, PA.~~
 Farm EZRA HAYS HRS.
 Tract 1 Acres 364 Lease No. _____
 Well (Farm) No. 1 Serial No. _____
 Elevation (Spirit Level) 860.28
 Quadrangle CENTERPOINT NC
 County WETZEL District GRANT
 Engineer Robert I. Whelan
By J. Herbert Huggin Bolham
 Engineer's Registration No. 3882
 File No. _____ Drawing No. _____
 Date 11-4-60 Scale 1" = 100'

STATE OF WEST VIRGINIA
 DEPARTMENT OF MINES
 OIL AND GAS DIVISION
 CHARLESTON

WELL LOCATION MAP
 FILE NO. WET-489-P

+ Denotes location of well on United States Topographic Maps, scale 1 to 62,500, latitude and longitude lines being represented by border lines as shown.

- Denotes one inch spaces on border line of original tracing.

47-103

1 2 3

Latitude 39° 30'

⊕ 0.605

NOEL C. SHREVE 78.78 A. SURFACE ONLY
EZRA E. HAYS HRS. TRACT NO. 1, 181A - PART OF 364 A. TOTAL
COAL DELINQUENT TO THE STATE IN NAME OF J. A. BRITTON ETAL - NOT OPERATED

297W
6

Longitude 80° 35'

NO. 1 ELE. 860.28

ROAD
BOB CAMPBELL RUN

12" CUT STO., 25' FROM ROAD

1047.75
S62°40'W

N47°40'E
222.4

N12°45'W
373

N59°13'E
521.8

NOEL C. SHREVE
SURF. OWNER
HAYS HRS. 173.5 A

313.5
N88°40'W

S1° N73°15'W
151.3

BEECH

New Location
Drill Deeper
Abandonment

Company IMPERIAL OIL CO.
 Address 504 CARLTON HOUSE, PITTSBURGH 19, PA.
 Farm EZRA HAYS HRS.
 Tract 1 Acres 364 Lease No. _____
 Well (Farm) No. 1 Serial No. _____
 Elevation (Spirit Level) 860.28
 Quadrangle CENTERPOINT NC
 County WETZEL District GRANT
 Engineer Robert I. Wheeler
By J. Herbert Higgins Bolham
 Engineer's Registration No. 3582
 File No. _____ Drawing No. _____
 Date 11-4-60 Scale 1" = 100'

STATE OF WEST VIRGINIA
DEPARTMENT OF MINES
OIL AND GAS DIVISION
CHARLESTON

WELL LOCATION MAP
FILE NO. WET-489

+ Denotes location of well on United States Topographic Maps, scale 1 to 62,500, latitude and longitude lines being represented by border lines as shown.

- Denotes one inch spaces on border line of original tracing.

2-6 95



STATE OF WEST VIRGINIA
DEPARTMENT OF MINES
OIL AND GAS DIVISION 13

NDG

Quadrangle Centerpoint

Permit No. WET-489

WELL RECORD

Oil or Gas Well Oil
(KIND)

Company IMPERIAL OIL COMPANY
Address 307 Union Trust Bldg., Parkersburg, W. V.
Farm Ezra Hayes Heirs Acres 364
Location (waters) Bob Campbell Run
Well No. One Elev. 860.28'
District Grant County Wetzel
The surface of tract is owned in fee by Noel Shreve
Address Jacksonburg, W. Va.
Mineral rights are owned by Simon D. Hayes, et al
Address Smithfield, W. Va.
Drilling commenced January 12, 1961
Drilling completed March 22, 1961
Date Shot _____ From _____ To _____
With _____
Open Flow _____ /10ths Water in _____ Inch
_____ /10ths Merc. in _____ Inch
Volume _____ Cu. Ft.
Rock Pressure 200x lbs. 15 hrs.
Oil 30 bbls., 1st 24 hrs.
WELL ACIDIZED _____
WELL FRACTURED Yes

Casing and Tubing	Used in Drilling	Left in Well	Packers
Size			
16			Kind of Packer
13			
10	350'		Size of
8 1/4		1160ft.	
6 5/8	2216'		Depth set
5 3/16		2994'	
3			Perf. top
2			Perf. bottom
Liners Used			Perf. top
			Perf. bottom

CASING CEMENTED _____ SIZE _____ No. Ft. _____ Date _____

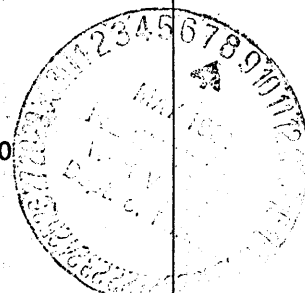
COAL WAS ENCOUNTERED AT _____ FEET _____ INCHES
_____ FEET _____ INCHES _____ FEET _____ INCHES
_____ FEET _____ INCHES _____ FEET _____ INCHES

RESULT AFTER TREATMENT 41 barrels daily

ROCK PRESSURE AFTER TREATMENT 200 lbs. in 15 hrs.

Fresh Water _____ Feet _____ Salt Water None Feet _____

Formation	Color	Hard or Soft	Top	Bottom	Oil, Gas or Water	Depth	Remarks
slate			0	25			
red rock			25	40			
slate			40	65			
water sand			65	75			
slate			75	210			
lime			210	225			
sand			225	232			
slate & shells			232	280			
lime			280	292			
slate			292	306			
shale & shells			306	330			
lime			330	345			
red rock			345	380			
shale			380	415			
lime & shells			415	480			
lime			480	495			
shale & shells			495	640			
lime (hard)			640	650			
lime & shells			650	865	Gas at 710		
red rock			865	885			
gray shale			885	895			
red rock			895	900			
slate & shale			900	950	Gas		
white sand red rock			950	970			
✓ sand (Dunkard)			970	1005	Gas 990-1005	(1 million cubic ft.)	
Black slate			1005	1067			



Formation	Color	Hard or Soft	Top / 3	Bottom	Oil, Gas or Water	Depth Found	Remarks
sandy lime			1067	1120			
slate & shells			1120	1157			
sand			1157	1191			
slate & shells			1191	1295			
sand			1295	1335			
slate			1335	1360			
sand			1368	1500	water at	460'	
slate			1500	1525			
sand			1525	1620			
slate			1620	1640			
sand			1640	1700			
slate			1700	1780			
red rock			1780	1855			
lime			1855	1878		1900	
slate			1878	1900		860	
lime			1900	1975		1040	
sand			1975	1980			
lime			1980	1990			
sand			1990	1995	smell of oil		
slate			1995	2000			
sand			2000	2154			
shale			2154	2273			
lime			2273	2284			
shale -shells			2284	2345			
lime			2345	2365			
shale-shells			2365	2400			
lime			2400	2450			
slate			2450	2500			
lime, slate -shells q			2500	2590			
slate			2590	2600			
sandy lime			2600	2620			
slate			2620	2705			
lime			2705	2710			
slate			2710	2725			
sand			2725	2755			
Gordon Sand			2755	2781	Oil		
slate & shells			2781	2970			
sandy shale			2970	2980			
shale & sandy shale			2980	3066			
Bayard Sand			3066	3076			
shale			3076	3100			
			Total Depth	3100			

Date May 5, 19 61

APPROVED IMPERIAL OIL COMPANY, Owner

By Robert M. Jordan
(Title) President