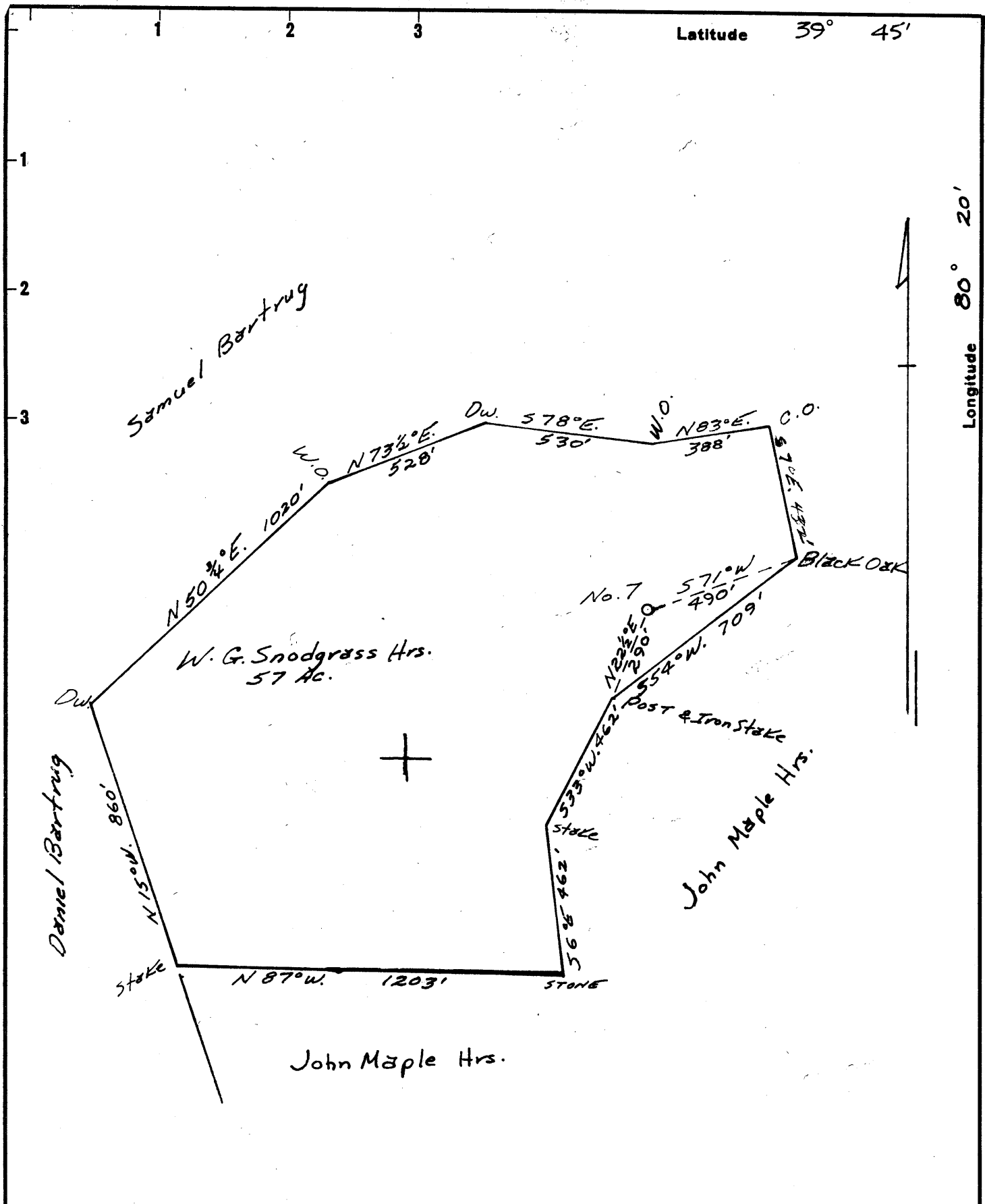


Latitude 39° 45'

Longitude 80° 20'



New Location
 Drill Deeper
 Abandonment

Note: Coal is not being operated.

Company BARRON KIDD
 Address Box 186, Sistersville, W. Va.
 Farm W. G. Snodgrass Hrs.
 Tract 1 Acres 57 Lease No.
 Well (Farm) No. 7 Serial No.
 Elevation (Spirit Level) 1312'
 Quadrangle Mannington NW/C
 County Wetzel District Church
 Engineer Leon Kerns
 Engineer's Registration No. 3320
 File No. Drawing No.
 Date Oct. 3, 1962 Scale 1"=400'

STATE OF WEST VIRGINIA
 DEPARTMENT OF MINES
 OIL AND GAS DIVISION
 CHARLESTON

WELL LOCATION MAP
 FILE NO. WRT-530

+ Denotes location of well on United States Topographic Maps, scale 1 to 62,500, latitude and longitude lines being represented by border lines as shown.

- Denotes one inch spaces on border line of original tracing.