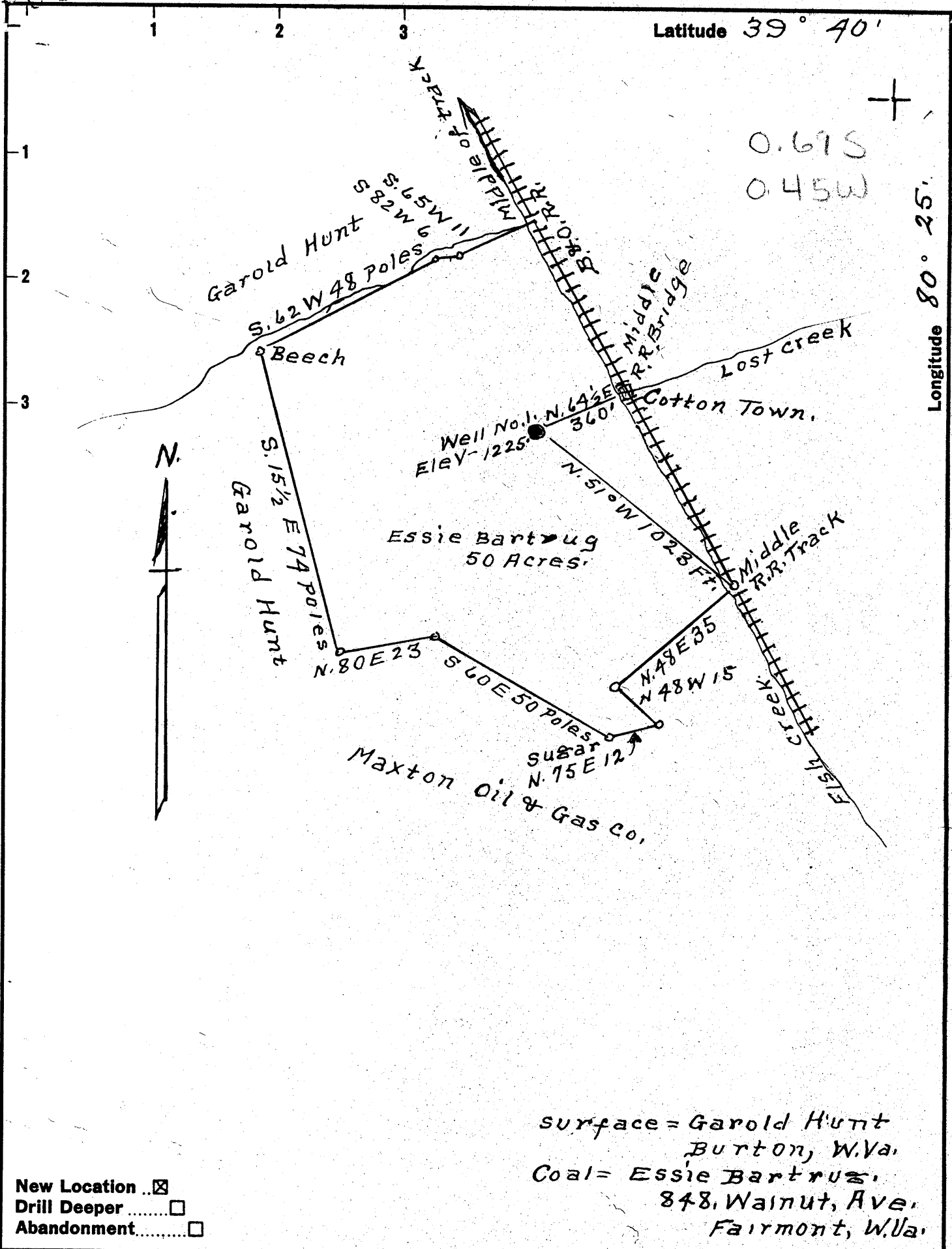


Latitude 39° 40'

Longitude 80° 25'

0.67S
0.45W



surface = Garold Hunt
 Burton, W. Va.
 Coal = Essie Bartrug,
 848, Walnut, Ave.
 Fairmont, W. Va.

New Location
 Drill Deeper
 Abandonment

Company D. Nealy
 Address Box 1546 Bay City, Texas
 Farm Essie Bartrug
 Tract 1 Acres 50 Lease No. _____
 Well (Farm) No. 1 Serial No. _____
 Elevation (Spirit Level) 1225'
 Quadrangle Mannington WC
 County Wetzel District Church
 Engineer A. L. Headley
 Engineer's Registration No. 2021
 File No. _____ Drawing No. _____
 Date 12-7-62 Scale 1" = 500'

STATE OF WEST VIRGINIA
 DEPARTMENT OF MINES
 OIL AND GAS DIVISION
 CHARLESTON

WELL LOCATION MAP
 FILE NO. WET-539

+ Denotes location of well on United States Topographic Maps, scale 1 to 62,500, latitude and longitude lines being represented by border lines as shown.

- Denotes one inch spaces on border line of original tracing.

SAMPLES 1795' - 2215'

66 53



STATE OF WEST VIRGINIA
DEPARTMENT OF MINES
OIL AND GAS DIVISION/4

Quadrangle Mannington S. W.

WELL RECORD

Permit No. WET 539

Oil or Gas Well oil
(KIND)

Company D. Mealy
Address P. O. Box 1516 Bay City, Texas
Farm Carol J. Hunt Acres 50
Location (waters) Fish Creek
Well No. 1 Elev. 1225'
District Church County Wetzel
The surface of tract is owned in fee by Garold J. Hunt
Burton, W. Va. Address
Mineral rights are owned by Essie Hartung
828 Walnut Ave. Address Fairmont, W. Va.
Drilling commenced April 12, 1963
Drilling completed May 5, 1963
Date Shot --- From To
With
Open Flow 10ths Water in _____ Inch
10ths Merc. in _____ inch
Volume _____ Cu. Ft.
Rock Pressure 10 lbs 24 hrs.
Oil 5 bbls., 1st 24 hrs.
WELL ACIDIZED _____

Casing and Tubing	Used in Drilling	Left in Well	Packers
Size			Kind of Packer _____
16	<u>19</u>	<u>19</u>	
13			Size of _____
10	<u>305</u>		Depth set _____
8 1/4	<u>1500</u>		Perf. top _____
6 3/4			Perf. bottom _____
5 3/16			Perf. top _____
3			Perf. bottom _____
2			
Liners Used _____			

CASING CEMENTED 4 1/2 SIZE 2300 No. Ft. 5-7-63 Date
200 sks. cement - Halliburton
COAL WAS ENCOUNTERED AT 1000 FEET 12 INCHES
FEET INCHES FEET INCHES
FEET INCHES FEET INCHES

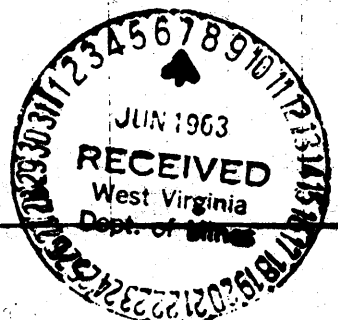
WELL FRACTURED by Halliburton Oil Well cementing Co. with 10,000 Sand and 18,000 Gallon of Water

RESULT AFTER TREATMENT Well produced 31 Bbl after treatment per 1st 24 Hours.

ROCK PRESSURE AFTER TREATMENT 400

Fresh Water 215 BBL per hour Salt Water 2 BBLs per Hour Feet 1430-1452

Formation	Color	Hard or Soft	Top	Bottom	Oil, Gas or Water	Depth	Remarks
Clay	red	soft	0	15			
Coal	Black	soft	15	16			
Gray Rock	Gray	hard	16	45			
Red Rock	Red	Hard	45	65			
Lime	White	hard	65	75			
Sand Stone	White	hard	75	88			
Slate	Gray	hard	88	104			
Red Rock	Red	hard	104	130			
Slate	Gray	hard	130	180			
Lime	White	hard	180	216			
Sand	White	soft	216	225	Water	216	1 BBL per hour
Lime	White	hard	225	245			
Red Rock	Red	soft	245	275			
Lime Shells	Gray	hard	275	320			
Lime	White	hard	320	360			
Red Rock	Red	hard	360	382			
Lime Shells	Gray	hard	382	410			
Slate	Gray	hard	410	425			
Lime Shells	Gray	hard	425	500			
Slate	Black	hard	500	530			
Lime Shells	Gray	hard	530	550			
Lime	Gray	hard	550	580			
Slate	Gray	hard	580	605			
Lime	Gray	hard	605	625			
Sand	Gray	hard	625	645			
Slate	Black	hard	645	660			
Lime	Gray	hard	660	692			
Sand	Gray	hard	692	750			
Slate	Black	hard	750	760			



Formation	Color	Hard or Soft	Top ¹⁴	Bottom	Oil, Gas or Water	Depth Found	Remarks
Slate	Black	Hard	760	770			
Lime	Gray	hard	770	895			
Slate	Gray	hard	895	905			
Slate	Gray	hard	905	909			
Lime	Gray	hard	909	916			
Slate	Gray	hard	916	930			
Lime	Gray	hard	930	990			
Slate	Black	hard	990	1000			
✓ Coal Pbg	Black	hard	1000	1012			
Lime	Gray	hard	1012	1020			
Slate	Gray	hard	1020	1040			
Lime	Gray	hard	1040	1065			
Slate	Gray	hard	1065	1075			
Red Rock	Red	soft	1075	1105			
Lime	Gray	Hard	1105	1120			
Red Rock	Red	hard	1120	1126			
Slate	Gray	hard	1126	1150			
Red Rock	Red	hard	1150	1224			
Slate	Gray	hard	1224	1274			
Red Rock	Red	hard	1274	1375			
Lime	Gray	hard	1375	1430			
✓ Sand LD	Gray	hard	1430	1452	Water	1430	2 BBLs per hr.
Slate	Gray	hard	1452	1465			
Bankard Sand	Gray	hard	1465	1528			
Slate	Black	hard	1528	1554			
Sand	Gray	hard	1554	1575			
Lime	Gray	hard	1575	1590			
Slate	Black	hard	1590	1665			
Sand	Gray	hard	1665	1710			
Slate	Black	hard	1710	1750	2195	1000	
Lime	Gray	hard	1750	1774	1225		
Slate	Black	hard	1774	1795	970		
Lime	Gray	hard	1795	1800			
✓ Sand Salt	Gray	hard	1800	1911			
Lime	Gray	hard	1911	1993			
Slate	Gray	hard	1993	2030			
Red Rock	Gray-red	hard	2030	2100			
Lime	Gray	hard	2100	2128			
✓ Sand Maxton	Gray	hard	2128	2195	oil	2128	
Lime	Gray	hard	2195	2254	B.L.?		
Lime Sand	Gray	hard	2254	2313	Total Depth		

Halliburton Multi-Stage Cementing Tool Set at 1075 and cemented with 100 Sacks w 4% Gel. Bottom of Casing Cemented w/100 Sacks.

Date June 5, 1963

APPROVED D. Nealy, Box 1546 Bay City, Texas

By Ray Hargrove, Agent (Title)