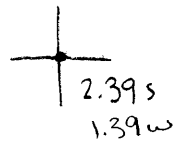


LATITUDE

39° 51' 30"

80° 35' 00"

LONGITUDE



7'5 OGIS topo location

7.5' loc ~~_____~~ 15' loc _____
 (calc.) _____

Company _____

Farm _____

Quad BIG RUN 7 1/2'

County WETZEL

District GRANT

WELL LOCATION MAP

File No. 103-1661

~~(117)~~ (045)

HOPE NATURAL GAS COMPANY.

LOCATION FOR WELL No. 268

Pipe Grove DISTRICT

T.L. Holbert
~~Harbert~~

Farm, on waters of Fishing Creek

Grant

District, Wetzel

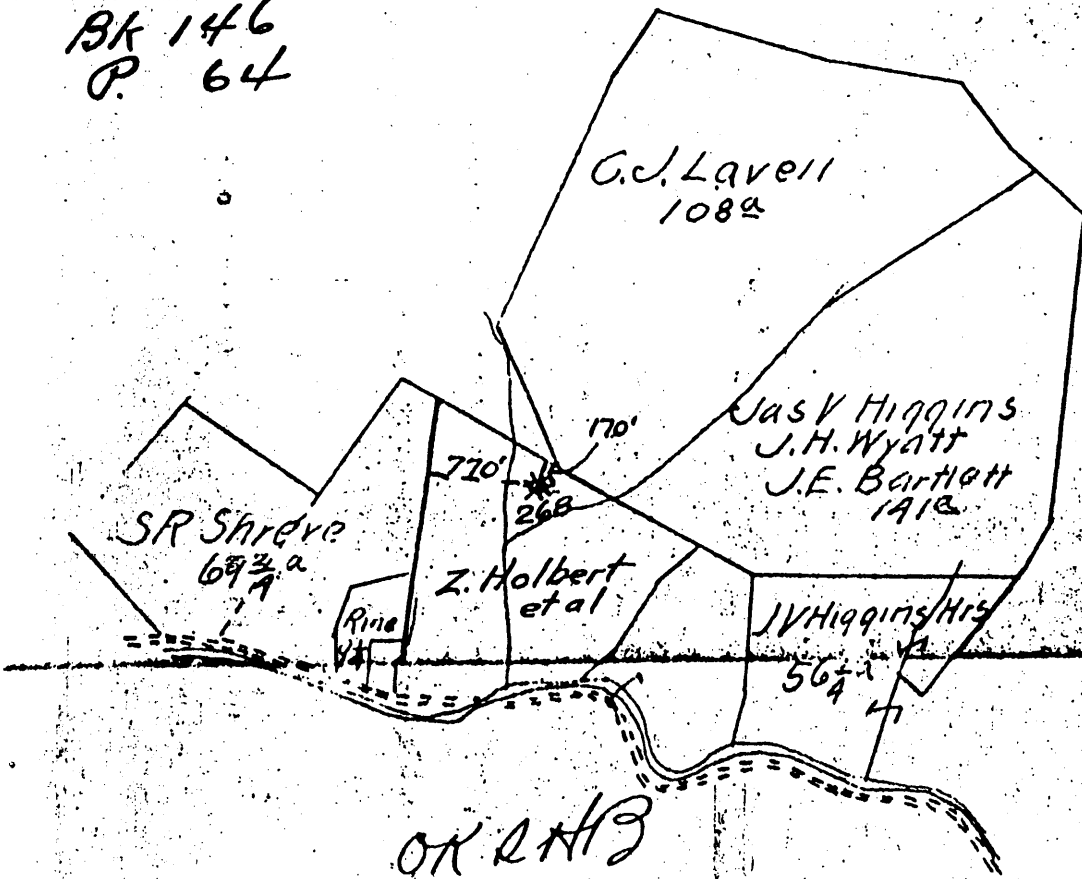
County, West Virginia

Map No. 195 Acres 60 N. 10 S. E. 2 W.

Scale, one inch equals 50 Feet Sent to 1

Location to be

BK 146
P. 64



NPI - 103 - 0661

RESERVE

SPECIAL INSTRUCTIONS

Location made 6-3-14 by O.C. Straight As per plat, except as noted. On field map

Returned to Pittsburgh

Location changed on account of

Authorized by Date Signed

WELL RECORD.

T. L. & S. Holbert Farm 60 Acres
 Pine Grove District Wetzel Co. County W. Va. State

Well No. 268
 Rig Commenced 190
 Rig Completed 190
 Drilling Commenced Oct. 20 190
 Drilling Completed Dec. 23 190
Lewis Bros Contractor.
J. P. Fishell Contractor.

ROCK FORMATION.	TOP.	BOTTOM.	REMARKS.
Pittsburg Coal	530	540	
Maxin Sand	1675	1695	
Big Injun Band	1705	1765	
Injun	1765	2025	
Stray	2580	2610	
Slate	2610	2615	
Gordon	2615	2630	Gas at 2623 feet
Total Depth		2635	Well shut off with 5 3/16" x 6 1/2" bottom hole packer

CASING RECORD.

Size.	Charged to Well.		Put in Well.		Pulled Out.		Left in Well.		Transferred Before Completion.		Left at Well, Not in Use.	
	Feet	In	Feet	In	Feet	In	Feet	In	Feet	In	Feet	In
10"			240		240							
8 1/4"			1350		1170		180					
6 5/8"			1520									
5 3/16"			2588									

Production First 24 hours } Bbls.
 Approved by *J. P. Fishell* Supt.

Proof.—Sum of Three right hand columns equals First or "Charged to Well."
 Use as many sheets as necessary to make a complete record.

API -103-0661