

✓ LATITUDE + $\frac{7\frac{1}{2}}{0.105}$ $\frac{0.81W}{393730}$ 3940

$\frac{15}{2.985}$
3.036

80 30
80 32 30

LONGITUDE

7'5 OGIS topo location

7.5' loc _____ 15' loc _____
 (calc.) _____

Company Hope Natural Gas (1384)

Farm Titus Lemunyon (705)

Elev 1400

Quad Big Run (254) 7 $\frac{1}{2}$ ' / Littleton (061) EC (2)
NW (X)

County Wetzel

District Center (1)

WELL LOCATION MAP

File No. 103-676

HOPE NATURAL GAS COMPANY.

LOCATION FOR WELL No. 705

Littleton DISTRICT

T. Lemunyon Farm, on waters of Big Run

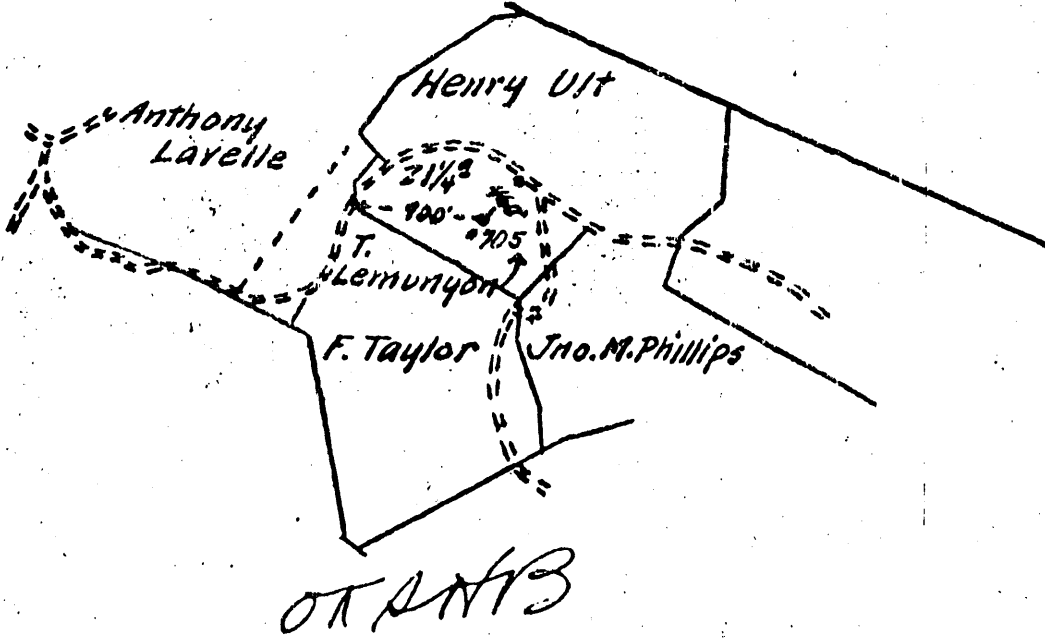
Center District, Netzel

County, West Virginia

Case No. 296 Acres 26 N. 13 S. — E. 4 W. —

Scale, one inch equals 80 p. Sent to 1

Location to be



API - 103-0676

BX. 146, pg 13

RESERVE

SPECIAL INSTRUCTIONS

Location ^{MEAS} made 5-12 14 by O.C. Straight. As per plat, except as noted. On field map.

Returned to Pittsburgh

Location changed on account of

Authorized by

Date

Signed

WELL RECORD

268

Titus *Leuter* Farm 26 Acres
 Leuter District Metzel County N. Va. State

Well No. 705
 Rig Commenced Mar 20 1905
 Rig Completed Mar 29 1905
 Drilling Commenced Apr 3 1905
 Drilling Completed June 10 1905

A.R. Davis Contractor
 Scheffner Bros. Contractor

ROCK FORMATION.	TOP.	BOTTOM.	REMARKS.
Conductor		16 ft	Stul line
Pgh Coal	1068	1076	2004
Little Blank and	1435	1508	2205
Big	1518	1569	2290
Gas Sand	1580	1760	2523
Salt "	1810	2136	3123
Red Rock	2140	2195	3147
Mason Sand	2200	2255	
Gas	2205		Howals
Little Lime	2242	2260	
Pencil base	2260	2278	
Big Lime	2278	2333	
" Impur	2333	2552	
57 ft Sand	2905	2945	
Stray "	3125	3146	
Kordony	3146		
" Gas from	3147	25157	3% mercury 5% opening
Total Depth		3165	

Best time 4 7/8

3165
1068
2097

CASING RECORD

Size	Charged to Well.		Put in Well.		Pulled Out.		Left in Well.		Transferred Before Completion.		Left at Well, Not in Use.	
	Feet	In.	Feet	In.	Feet	In.	Feet	In.	Feet	In.	Feet	In.
10	629	2	600	-			600				29	2
8 1/4	1787	-	1564	10			1564	10			222	2
6 7/8	2239	6	2070	-			2070				169	6
5 7/8	2379	8	2306	3			2306	3			73	8
1 5/8 x 3/8 Bot hole packer												

Production First 24 hours } _____ Bbls.

Approved by *N. Wright* Supt.

Primary - Must of Three right hand columns equals First or "Charged to Well."
 Use as many sheets as necessary to make a complete record.
 In making out this record please use copying ink or an indelible pencil.