

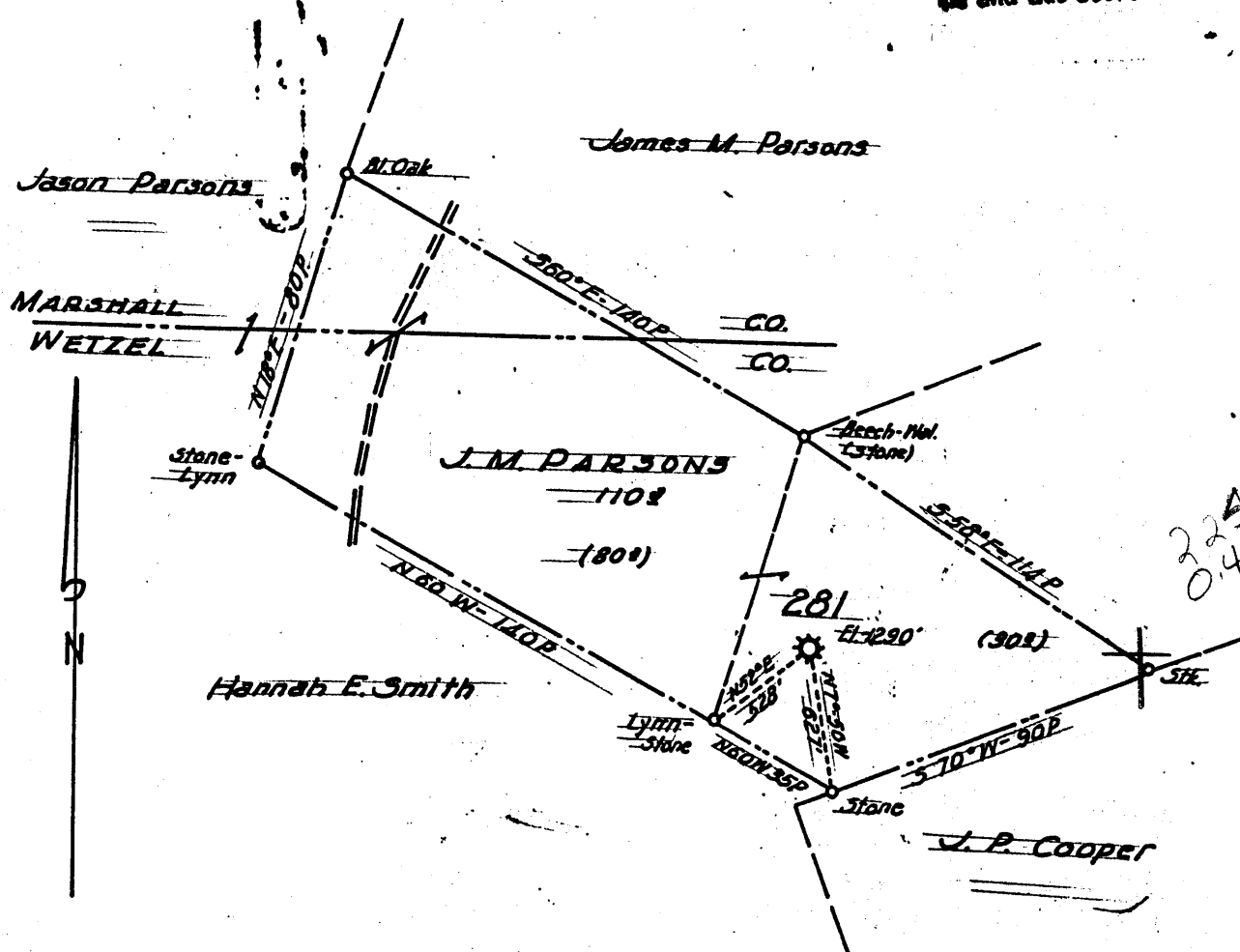
Latitude 39° 45'

RECEIVED

SEPT 17 91

Division of Energy
Oil and Gas Section

12.100
2650
80° 45'
Longitude



New Location
 Drill Deeper
 Abandonment

current operator Parsons Oil & Gas

FORMERLY H. N. G. CO. WELL No 281

Company A. M. SNIDER
 Address HUNDRED, W. VA.
 Farm J. M. PARSONS
 Tract _____ Acres 110 Lease No. _____
 Well (Farm) No. _____ Serial No. 281
 Elevation (Spirit Level) 12.90'
 Quadrangle NEW MARTINSVILLE +15' NE
 County WETZEL District PROCTOR
 Engineer HENRY A. HAIN
 Engineer's Registration No. 3150
 File No. AMS-27-60 Drawing No. _____
 Date _____ Scale 1" = 50 POLES

375° 00

STATE OF WEST VIRGINIA
 DEPARTMENT OF MINES
 OIL AND GAS DIVISION
 CHARLESTON

WELL LOCATION MAP
 FILE NO. 103-1498

+ Denotes location of well on United States Topographic Maps, scale 1 to 62,500, latitude and longitude lines being represented by border lines as shown.

- Denotes one inch spaces on border line of original tracing.

MAR 1 6 1992

103-1498

J. M. Parsons, No. - 281 Well (293A)
(Lease 1,908 - 110 acres)

Proctor Dist., Wetzel Co., W. Va.; on a northern branch of
Left Fork of Proctor Creek 2.3 miles southeast of Ella and 3.4
miles N 80° E of Proctor; completed Dec. 2, 1902; deepened
April 21, 1911; by Hope Natural Gas Co., elevation, _____.

	Top Feet	Bottom Feet
Sand, <u>Gordon</u>	2870	2895

Gordon Sand gas well; 9,891,000 cu.ft.
Rock pressure, 130 lbs.

FROM
CO N
i.00

brod
nsdA