

Latitude 39° 15'

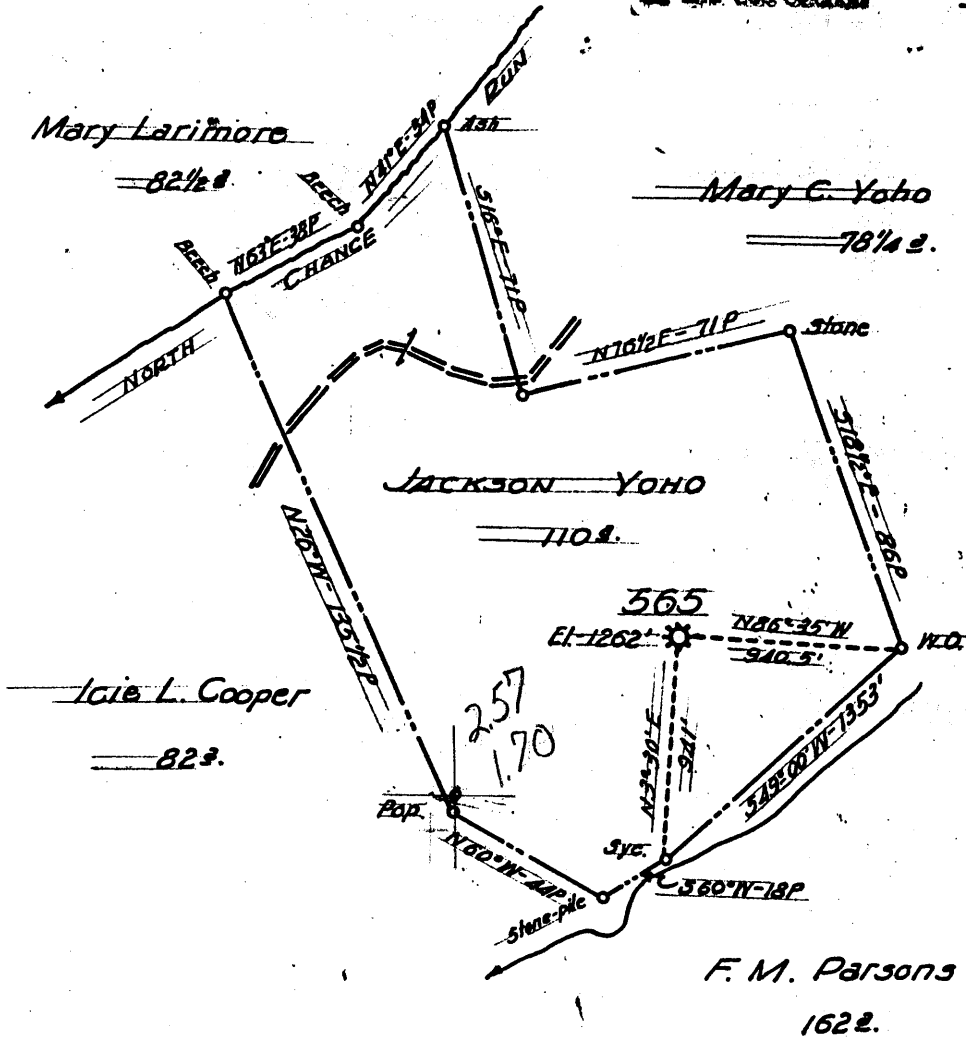
Longitude 80° 45'

RECEIVED

SEPT 17 91

Division of Energy
Oil and Gas Section

1380
+ 9200



- New Location ..
- Drill Deeper
- Abandonment

FORMERLY H.N.G. Co. WELL No 565

Company A. M. SNIDER 37500
 Address HUNDRED, W. VA.
 Farm JACKSON YOHO
 Tract _____ Acres 110 Lease No. _____
 Well (Farm) No. _____ Serial No. 565
 Elevation (Spirit Level) 1262'
 Quadrangle NEW MARTINSVILLE NE
 County WETZEL District PROCTOR
 Engineer HENRY A. HAIN
 Engineer's Registration No. 3150
 File No. AMS-30-60 Drawing No. _____
 Date _____ Scale 1" = 50 POLES

STATE OF WEST VIRGINIA
DEPARTMENT OF MINES
OIL AND GAS DIVISION
CHARLESTON

WELL LOCATION MAP
FILE NO. 103-1500

+ Denotes location of well on United States
Topographic Maps, scale 1 to 62,500, lat-
itude and longitude lines being represented
by border lines as shown.

- Denotes one inch spaces on border line
of original tracing.