

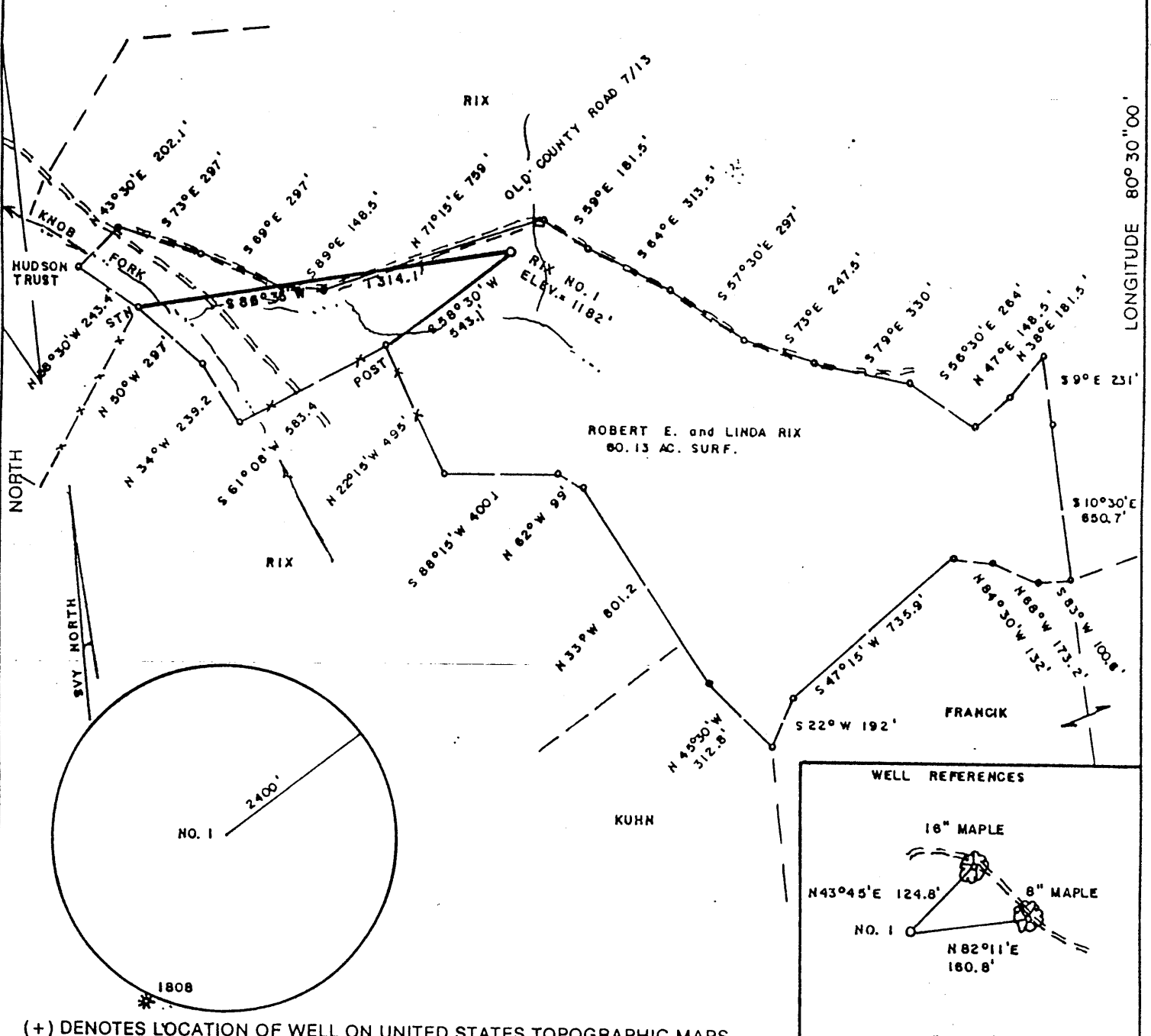
9220' W

LATITUDE 39°37'30"

7.5' topo. loc.

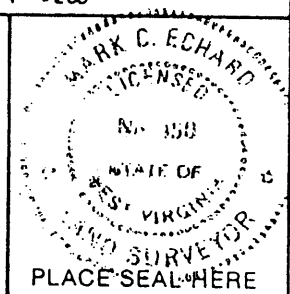
RIX LEASE 60.13 AC.

1.18
1.74



FILE NO. _____
 DRAWING NO. _____
 SCALE 1" = 500'
 MINIMUM DEGREE OF ACCURACY 1/200
 PROVEN SOURCE OF ELEVATION JCT. OF ROADS
 SW OF LEASE ELEV. = 1550'

I THE UNDERSIGNED, HEREBY CERTIFY THAT THIS PLAT IS CORRECT TO THE BEST OF MY KNOWLEDGE AND BELIEF AND SHOWS ALL THE INFORMATION REQUIRED BY LAW AND THE REGULATIONS ISSUED AND PRESCRIBED BY THE DEPARTMENT OF ENERGY.
 (SIGNED) Mark C. Echard
 R.P.E. _____ L.L.S. 490



STATE OF WEST VIRGINIA
 Division of Environmental Protection
 OFFICE OF OIL AND GAS

DATE SEPTEMBER 15 2000
 OPERATOR'S WELL NO. RIX NO. 1
 API WELL NO. _____

WELL TYPE: OIL GAS LIQUID INJECTION WASTE DISPOSAL
 (IF "GAS,") PRODUCTION STORAGE DEEP SHALLOW
 LOCATION: ELEVATION 1182' WATERSHED KNOB FORK
 DISTRICT CENTER COUNTY WETZEL
 QUADRANGLE BIG RUN 7.5'

SURFACE OWNER ROBERT E. and LINDA RIX ACREAGE 60.13
 OIL & GAS ROYALTY OWNER ROBERT E. and LINDA RIX LEASE ACREAGE 60.13
 LEASE NO. _____

PROPOSED WORK: DRILL CONVERT DRILL DEEPER REDRILL FRACTURE OR STIMULATE PLUG OFF OLD FORMATION PERFORATE NEW FORMATION OTHER PHYSICAL CHANGE IN WELL (SPECIFY) _____

PLUG AND ABANDON CLEAN OUT AND REPLUG
 TARGET FORMATION SPEECHLEY ESTIMATED DEPTH 3900'
 WELL OPERATOR D.A.C. DESIGNATED AGENT KENNETH MASON
 ADDRESS P.O. BOX 99 ADDRESS P.O. BOX 99
ALMA, WV 26320 ALMA, WV 26320

SEP 29 2000

6-6 45

COUNTY NAME **WET**
 PERMIT **1809**
 LONGITUDE 90°03'08"

State of West Virginia
Division of Environmental Protection
Section of Oil and Gas

Reviewed AW

Well Operator's Report of Well Work

Farm Name:	Rix	Operators Well No.:	#1
Location:	Elevation: 1182'	Quadrangle:	Big Run 7.5'
	District: Center	County:	Wetzel
	Latitude: 990 Feet South of		39 Deg. 37 min. 30sec.
	Longitude: 9220 Feet West of		80 Deg. 30 min. 00sec.

Company: D.A.C.
P. O. 99
Alma WV 26320

casing	used in	left	cement
tubing	drilling	in well	fill up sks

Agent: Kenneth Mason

9 5/8 210 210 68 sks

Inspector: Randall Mick

Permit Issued: 09/25/00

6 5/8 1591 1591 150 sks

Well Work Commenced: 10/13/00

Well Work Completed: 10/20/00

4 1/2 3560 3478 170 sks

Rotary X Cable _____ Rig

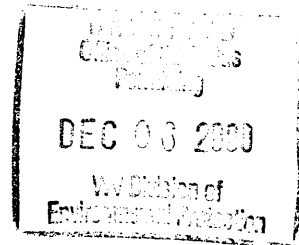
Total Depth (feet) 3351'

Fresh Water Depths (ft) 1723

Salt Water Depths (ft) N/A

Is coal being mined in area (Y/N) N

Coal Depths (ft): N/A



OPEN FLOW DATA

Producing formation Gordon

Pay zone depth (ft) 3115-2979

Gas: Initial open flow 146 MCF/D

Oil: Initial open flow 0 BBL/D

Final open flow 250 MCF/D

Final open Flow show BBL/D

Static Rock Pressure

psig (surface pressure) after 48 Hours

Second producing formation Big Injun

Pay zone depth (ft) 2234-2320

Gas: Initial open flow * MCF/D

Oil: Initial open flow 0 BBL/D

Final open flow * MCF/D

Final open flow 0 BBL/D

static rock pressure *

psig (surface pressure) after * Hours

* = commingled zones

For: D.A.C.

By: Kenneth R. Mason

Date: 11-17-00

JAN 5 2001

WE 1/18/01

Stage	Formation	Perfs	Sand	N2
10-26-00	Rix #1			
1	4th, 5th	2979-3115 18 holes	150 sks	234,000 scf
2	Big Injun	2234-2350	250 sks	262,000 scf

ISIP = 2494
5 min = 2020

Drillers Log

Formation	Top	Bottom	
Fill	0	15	
Sd/Sh	15	275	
Sd	275	458	
Sd/Sh	458	771	1 1/2" @ 110'
Sd	771	782	
Sd/Sh	782	1024	
RR	1024	1125	damp @ 1723
Sd/Sh	1125	1721	
Sd	1721	1775	
Sd/Sh	1775	2115	
LL	2115	2145	
BL	2145	2239	
Sd	2239	2434	
Sh	2434	2991	
Sd	2991	3078	
Sh	3078	3351	gas ck @ 326' = 160 mcfs
Td	3351		gas ck @ 17d = 46 mcfs

Electric Log Tops

Formation	Depth	Top
Big Lime	2162	
Big Injun	2212	
Berea	2264	
Gordon	3000	
4th	3075	