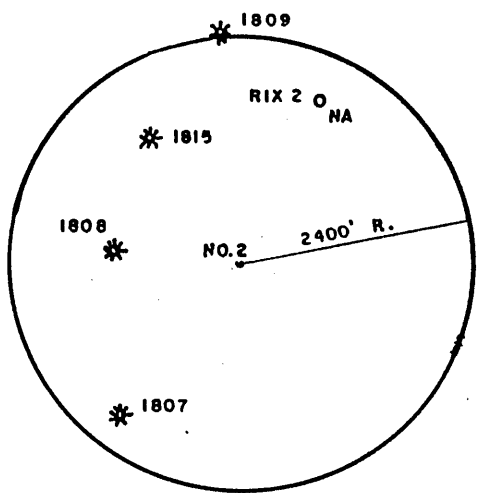
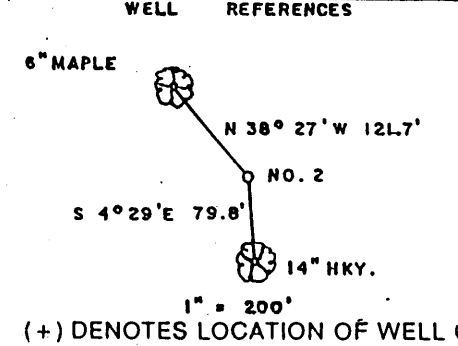
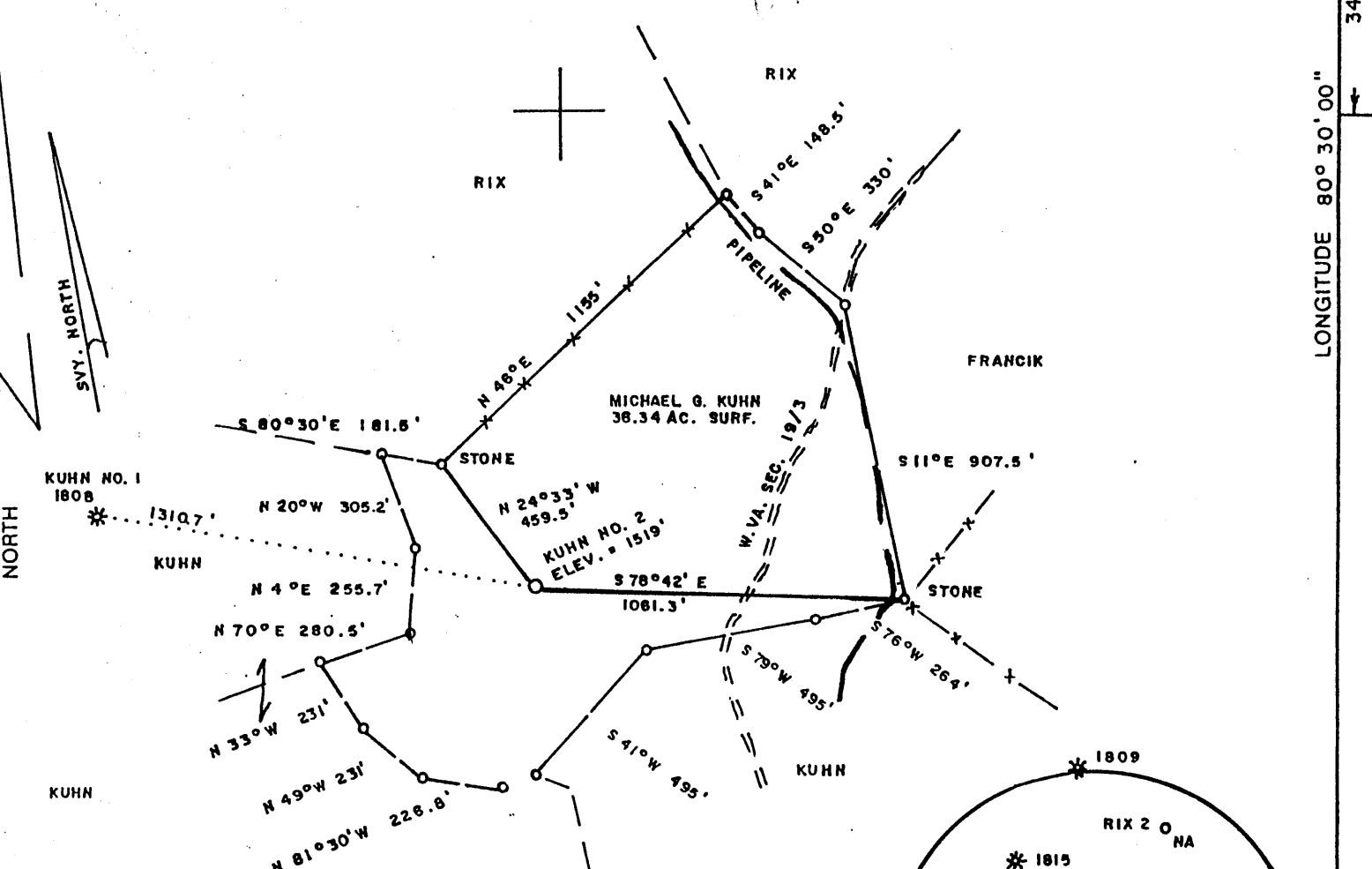


9100' W

LATITUDE 39°37'30"

LONGITUDE 80°08'00"

KUHN LEASE 36.34 AC.



FILE NO. _____

DRAWING NO. _____

SCALE 1" = 500

MINIMUM DEGREE OF ACCURACY 1/200

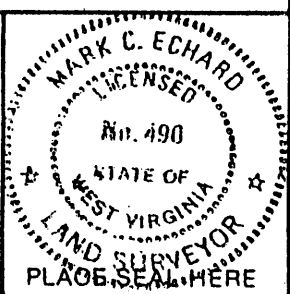
PROVEN SOURCE OF ELEVATION TOP OF KNOB

EAST SIDE OF LEASE ELEV. = 1635'

I THE UNDERSIGNED, HEREBY CERTIFY THAT THIS PLAT IS CORRECT TO THE BEST OF MY KNOWLEDGE AND BELIEF AND SHOWS ALL THE INFORMATION REQUIRED BY LAW AND THE REGULATIONS ISSUED AND PRESCRIBED BY THE DEPARTMENT OF ENERGY.

(SIGNED) Mark C. Echard

R.P.E. _____ L.L.S. 490



STATE OF WEST VIRGINIA
Division of Environmental Protection
OFFICE OF OIL AND GAS

DATE MAY 7, 2001

OPERATOR'S WELL NO. KUHN NO. 2

API WELL NO. 47-103-01840

STATE 47 COUNTY 103 PERMIT 01840

WELL TYPE: OIL GAS LIQUID INJECTION WASTE DISPOSAL
(IF "GAS.") PRODUCTION STORAGE DEEP SHALLOW

LOCATION: ELEVATION 1519 WATERSHED KNOB FORK

DISTRICT CENTER COUNTY WETZEL

QUADRANGLE BIG RUN 7.5'

SURFACE OWNER MICHAEL G. KUHN ACREAGE 36.34

OIL & GAS ROYALTY OWNER MICHAEL G. KUHN LEASE ACREAGE 36.34

LEASE NO. _____

PROPOSED WORK: DRILL CONVERT DRILL DEEPER REDRILL FRACTURE OR STIMULATE PLUG OFF OLD FORMATION PERFORATE NEW FORMATION OTHER PHYSICAL CHANGE IN WELL (SPECIFY) _____

PLUG AND ABANDON CLEAN OUT AND REPLUG

TARGET FORMATION: SPEECHLEY ESTIMATED DEPTH 3900'

WELL OPERATOR D. A. C. DESIGNATED AGENT KENNETH MASON

ADDRESS P.O. BOX 99 ADDRESS P.O. BOX 99

ALMA, WV 26320 ALMA, WV 26320

COUNTY NAME WETZEL

PERMIT 1840

JUN 08 2001

State of West Virginia
Division of Environmental Protection
Section of Oil and Gas

M B

Well Operators Report of Well Work

Farm name: Kuhn Operator Well #: Kuhn #2
Location: Elevation: 1,519. Quadrange: Big Run 7.5'
District: Center County Wetzel
Latitude 3,400 feet south of 39 Deg. 37 Min. 30 Sec.
Longitude 9,100 feet west of 80 Deg. 30 Min. 00 Sec.

Company: Drilling Appalachian Corporation
P.O. Box 99
Alma WV 26320

Agent:	Kenneth Mason	Casing	Used in Drilling	Left in Well	Cement Fill up
Inspector:	Randall Mick				
Permit Issued:	06-05-01	9 5/8	225	218	68 sks
Well Work Commenced:	08-23-01				
Well Work Completed:	08-30-01	6 5/8	1850	1765	100 sks
Verbal Plugging					
Permission granted on:		4 1/2	3759	3695	150 sks
Rotary _____ Cable _____ Rig					
Total Depth (ft)	3759'				
Fresh water depth (ft)	2030'				
Salt water depth (ft)	N/A				
Is coal being mined in are (Y/N)	N				
Coal depths (ft)	N/A				

RECEIVED
 Office of Oil & Gas
 Permitting

OCT 04 2001

 WV Department of
 Environmental Protection

OPEN FLOW DATA

Producing formation	Bayard	Pay zone depths (ft)	3420-3552
Gas: Initial open flow	120 mcf/d	Oil: Initial open flow	bbls/day
Final open flow	120 mcf/d	Final open flow	bbls/day
Time of open flow between initial and final tests			48 Hours
Static rock pressure	450# psig (surface pressure) after		48 Hours
Other producing formation	Big Injun	Pay zone depths (ft)	2612-2662
Gas: Initial open flow	mcf/day	Oil: Initial open flow	bbls/day
Final open flow	mcf/day	Final open flow	bbls/day
Time of open flow between initial and final tests			48 Hours
Static rock pressure	psig (surface pressure) after		48 Hours

For: Drilling Appalachian Corporation
By: *Randall Mick*
Date: 09-15-01

OCT 19 2001

WET 1840

Kuhn #2
09-04-01

Stage #1	perfs	sand	avg rate	isip
5 th , 4 th Bayard	3412-3542	250 sks	20 bpm	3059#
Stage #2 Big Injun	2604-2652	85 sks	20 bpm	2355#

Drillers Log

Sh	0	275	
Sd	275	510	
RR	510	520	
Sd/Sh	520	541	
RR	541	558	
Sd/Sh	558	2029	½" strm 2 297'
Sd	2029	2097	damp 2030'
Sd/Sh	2097	2309	
RR	2309	2485	
Lime	2485	2491	
Sh	2491	2496	
Lime	2496	2636	gas ck @ 2639 = no show
Sd	2636	2764	
Sd/Sh	2764	3350	
Sd	3350	3365	
Sh	3365	3408	
Sd	3408	3420	gas ck @ 3426 = 102 mcfs
Sd/Sh	3420	3759	gas ck @ 3472 = 120 mcfs
Td	3759		

Electric Log Tops

Big Lime	2510
Berea	2902
Gordon	3326

