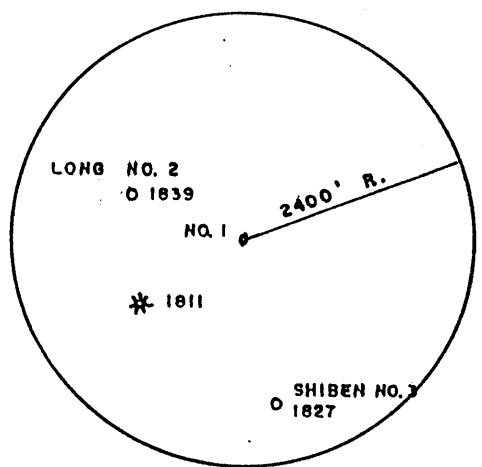
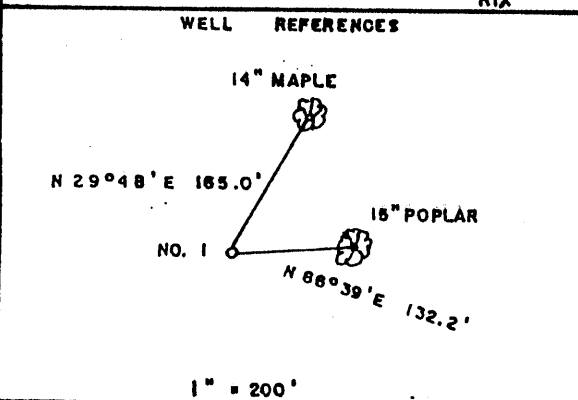
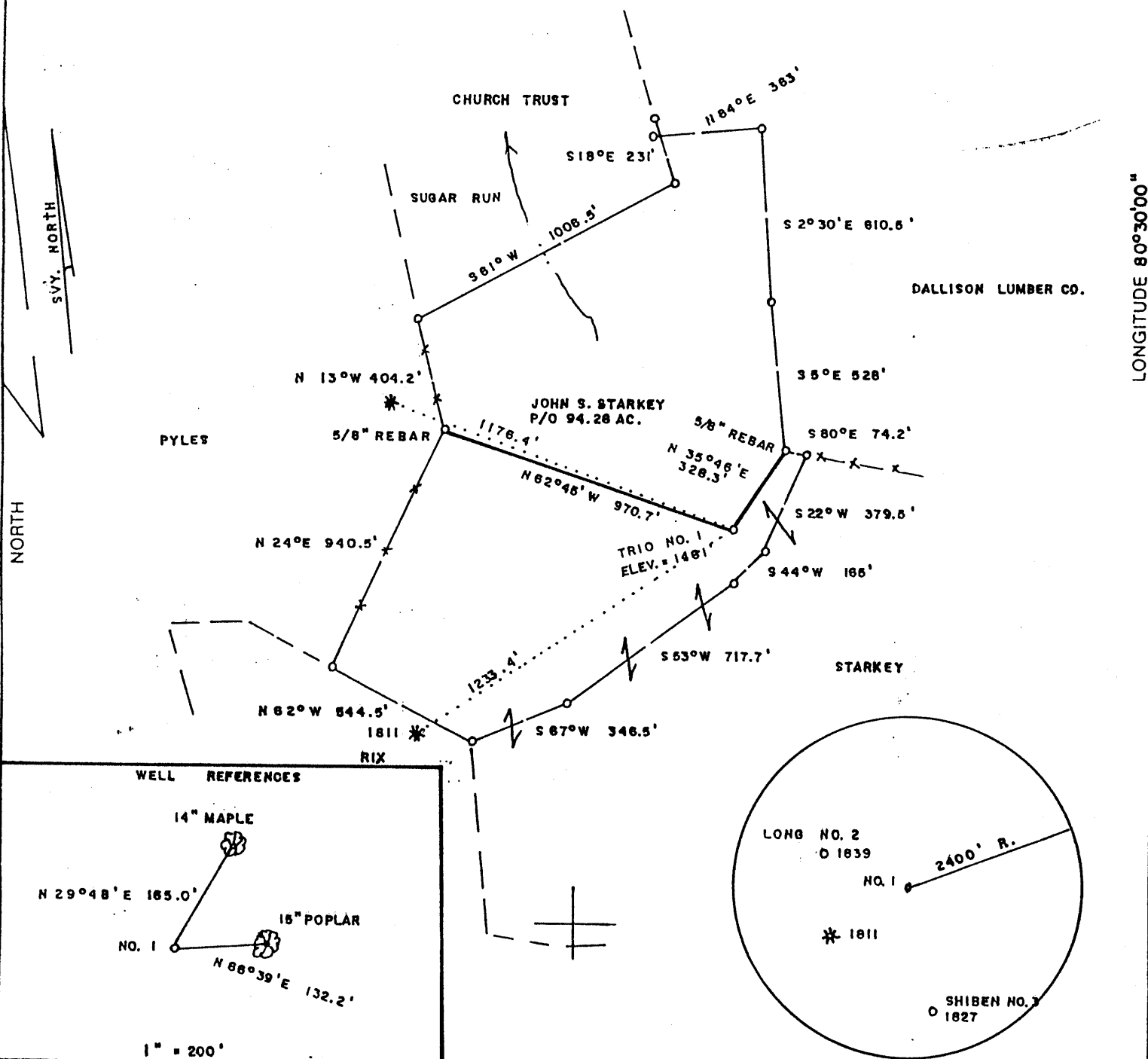


TRIO LEASE 47.4 AC.

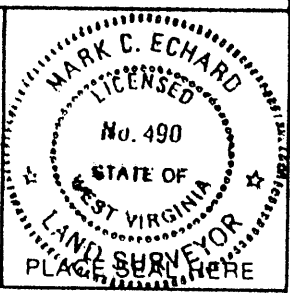
7900' W
LATITUDE 39°40'00"



(+) DENOTES LOCATION OF WELL ON UNITED STATES TOPOGRAPHIC MAPS

FILE NO. _____
DRAWING NO. _____
SCALE 1" = 500'
MINIMUM DEGREE OF ACCURACY 1/200
PROVEN SOURCE OF ELEVATION BM - SW OF LEASE
ELEV. = 1322'

I THE UNDERSIGNED, HEREBY CERTIFY THAT THIS PLAT IS CORRECT TO THE BEST OF MY KNOWLEDGE AND BELIEF AND SHOWS ALL THE INFORMATION REQUIRED BY LAW AND THE REGULATIONS ISSUED AND PRESCRIBED BY THE DEPARTMENT OF ENERGY.
(SIGNED) Mark C. Echard
R.P.E. _____ L.L.S. 490



STATE OF WEST VIRGINIA
Division of Environmental Protection
OFFICE OF OIL AND GAS

DATE JULY 10, 2001
OPERATOR'S WELL NO. TRIO NO. 1
API WELL NO. 47-103-01858
STATE WV COUNTY WETZEL PERMIT

WELL TYPE: OIL GAS LIQUID INJECTION WASTE DISPOSAL
(IF "GAS.") PRODUCTION STORAGE DEEP SHALLOW

LOCATION: ELEVATION 1461' WATERSHED SUGAR RUN OF FISH CREEK
DISTRICT CENTER COUNTY WETZEL
QUADRANGLE LITTLETON 7.5'

SURFACE OWNER JOHN S. STARKEY ACREAGE P/O 94.28
OIL & GAS ROYALTY OWNER TRIO PETROLEUM CORP., et al LEASE ACREAGE 47.4
LEASE NO. _____

PROPOSED WORK: DRILL CONVERT DRILL DEEPER REDRILL FRACTURE OR STIMULATE PLUG OFF OLD FORMATION PERFORATE NEW FORMATION OTHER PHYSICAL CHANGE IN WELL (SPECIFY) _____

PLUG AND ABANDON CLEAN OUT AND REPLUG

TARGET FORMATION SPEECHLEY ESTIMATED DEPTH 3900'
WELL OPERATOR D.A.C. DESIGNATED AGENT KENNETH MASON
ADDRESS P.O. BOX 99 ALMA, WV 26320 ADDRESS P.O. BOX 99 ALMA, WV 26320

LONGITUDE 80°30'00" WET 1858 PERMIT

State of West Virginia
Department of Environmental Protection
Office of Oil and Gas

ASB

Well Operator's Report of Well Work

Farm name: John S. Starkey

Operator Well No. Trio #1

LOCATION: Elevation: 1461'

Quadrangle: Littleton 7.5'

District: Center County: Wetzel
Latitude: 13,980 Feet South of 39 Deg. 40 Min. 00 Sec.
Longitude 7900' Feet West of 80 Deg. 30 Min. 00 Sec.

Company: D.A.C.

	Casing & Tubing	Used in drilling	Left in well	Cement fill up Cu. Ft.
Address: P.O. Box 99	9-5/8"	217'	217'	85 sks
Alma, WV 26320	7"	1800'	1800'	100
Agent: Kenneth Mason	4-1/2"	3850'	3850'	165
Inspector: Randal Mick				
Date Permit Issued: 8/23/2001				
Date Well Work Commenced: 10/19/01				
Date Well Work Completed: 10/27/01				
Verbal Plugging:				
Date Permission granted on:				
Rotary X Cable Rig				
Total Depth (feet): 3706'				
Fresh Water Depth (ft.): 2080'				
Salt Water Depth (ft.):				
Is coal being mined in area (N/Y)? N				
Coal Depths (ft.): 1230				

OPEN FLOW DATA

Producing formation Gordon Pay zone depth (ft) 3324-3405
Gas: Initial open flow 42 MCF/d Oil: Initial open flow _____ Bbl/d
Final open flow 244 MCF/d Final open flow _____ Bbl/d
Time of open flow between initial and final tests _____ Hours
Static rock Pressure 700 psig (surface pressure) after 48 Hours

Second producing formation Big Injun Pay zone depth (ft) 2562-2587
Gas: Initial open flow * _____ MCF/d Oil: Initial open flow _____ Bbl/d
Final open flow * _____ MCF/d Final open flow _____ Bbl/d
Time of open flow between initial and final tests _____ Hours
Static rock Pressure _____ psig (surface pressure) after _____ Hours

* = commingled zones

NOTE: ON BACK OF THIS FORM PUT THE FOLLOWING: 1). DETAILS OF PERFORATED INTERVALS, FRACTURING OR STIMULATING, PHYSICAL CHANGE, ETC. 2). THE WELL LOG WHICH IS A SYSTEMATIC DETAILED GEOLOGICAL RECORD OF ALL FORMATIONS, INCLUDING COAL ENCOUNTERED BY THE WELLS.

Signed: D.A.C. *Kenny Mason*
By: Kenny Mason

MAR 08 2002

WET 1858

API # 47-103-01858

Trio #1

Stage #1	perfs	sand sks
Gordon/4 th	3324-3405	250 sks
Stage #2		
Big Injun	2562-2587	250 sks

ISIP = 2541

Drillers Log

Clay	0-65'
Shale	65'-70'
RR	70'-110'
Sd/Sh	110'-145'
RR	145'-180'
Sd/Sh	180'-458'
Sand	458'-573'
RR	573'-1230'
Coal	1230'-1294'
Sd/Sh	1294'-1426'
RR	1426'-1564'
RR/Sh	1564'-1574'
Sand/Sh	1574'-1593'
Sh	1593'-1620'
Sand	1620'-1677'
Sd/Sh	1677'-1708'
Sand	1708'-1928'
Coal	1928'-1933'
Sd/Sh	1933'-2430'
B. Lime	2430'-2498'
B. Injun	2498'-2675'
Sd/Sh	2675'-3267'
Gordon	3267'-3310'
Sd/Sh	3310'-3320'
4 th Sand	3320'-3370'
Bayard	3370'-3580'
Sd/Sh	3580'-3706'
TD	3706'

Electric Log Tops

Big lime	2482
Gordon	3270

damp 2080'

gas ck @ Td = 42 mcfs