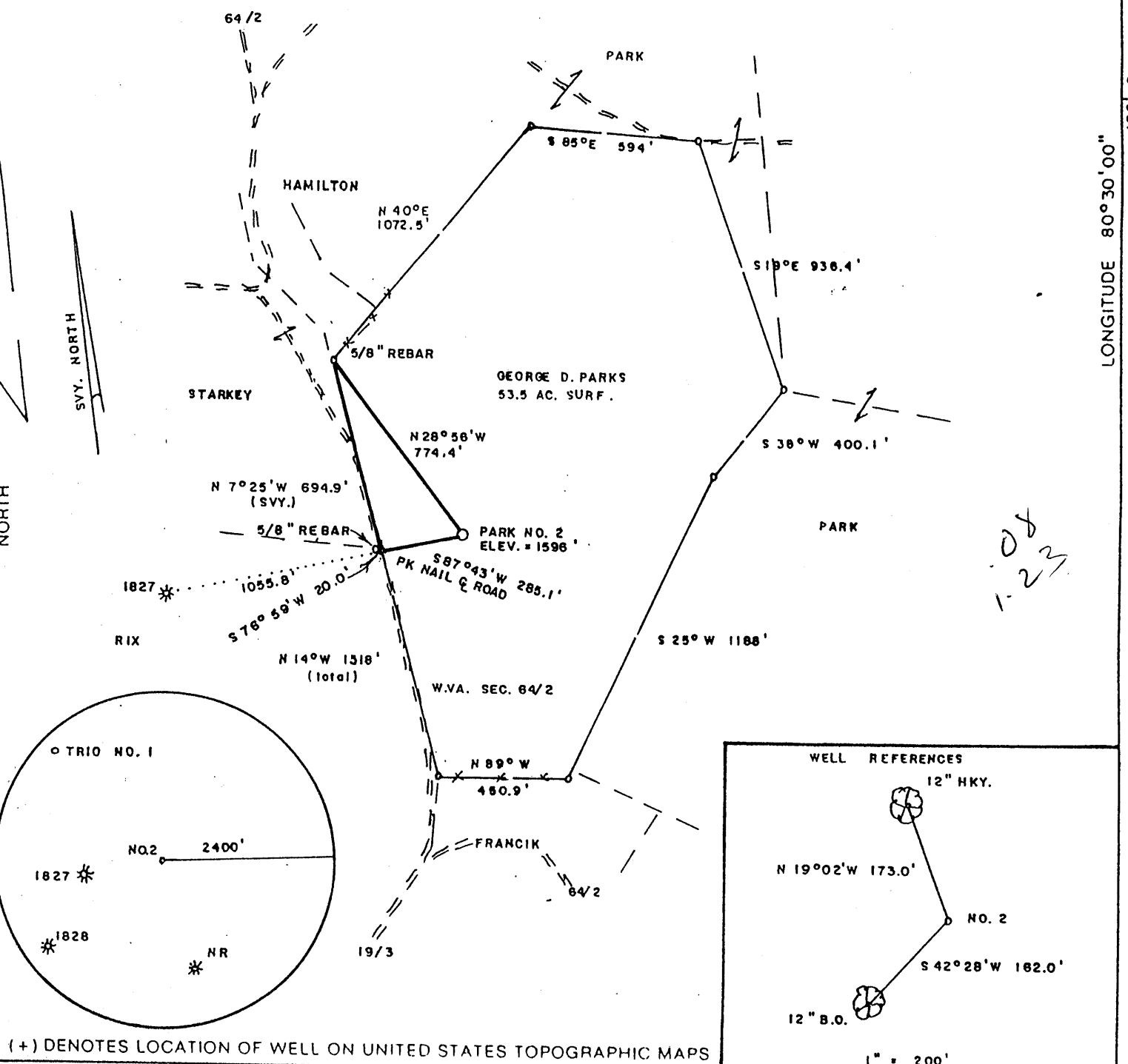


PARK LEASE 53.5 AC. OF 125 AC.

6520' W
LATITUDE 39°37'30"

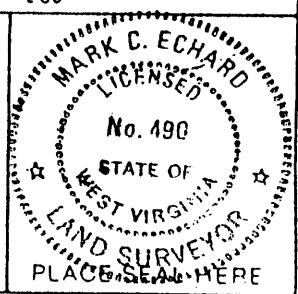
LONGITUDE 80°08'00"



108
1-23

FILE NO. _____
DRAWING NO. _____
SCALE 1" = 500'
MINIMUM DEGREE OF ACCURACY 1/200
PROVEN SOURCE OF ELEVATION TOP OF KNOB SW of LEASE ELEV. = 1635'

I THE UNDERSIGNED, HEREBY CERTIFY THAT THIS PLAT IS CORRECT TO THE BEST OF MY KNOWLEDGE AND BELIEF AND SHOWS ALL THE INFORMATION REQUIRED BY LAW AND THE REGULATIONS ISSUED AND PRESCRIBED BY THE DEPARTMENT OF ENERGY.
(SIGNED) Mark C. Echard
R.P.E. _____ L.L.S. 490



STATE OF WEST VIRGINIA
Division of Environmental Protection
OFFICE OF OIL AND GAS

DATE OCTOBER 12, 2001
OPERATOR'S WELL NO PARK NO. 2
API WELL NO. _____

WELL TYPE: OIL ___ GAS LIQUID INJECTION ___ WASTE DISPOSAL ___
(IF "GAS") PRODUCTION STORAGE ___ DEEP ___ SHALLOW

LOCATION: ELEVATION 1596' WATERSHED KNOB FORK
DISTRICT SCHER Church COUNTY WETZEL
QUADRANGLE BIG RUN 7.5

SURFACE OWNER GEORGE D. PARK ACREAGE 53.5
OIL & GAS ROYALTY OWNER GEORGE D. PARK, et al LEASE ACREAGE 125
LEASE NO. _____

PROPOSED WORK: DRILL CONVERT ___ DRILL DEEPER ___ REDRILL ___ FRACTURE OR STIMULATE PLUG OFF OLD FORMATION ___ PERFORATE NEW FORMATION ___ OTHER PHYSICAL CHANGE IN WELL (SPECIFY) _____

PLUG AND ABANDON ___ CLEAN OUT AND REPLUG ___
TARGET FORMATION SPEECHLEY ESTIMATED DEPTH 3900'

WELL OPERATOR D.A.C. DESIGNATED AGENT KENNETH MASON
ADDRESS P.O. BOX 99 ALMA, WV 26320 ADDRESS P.O. BOX 99 ALMA, WV 26320

COUNTY NAME WETZEL
PERMIT 1866

OCT 26 2001

State of West Virginia
Department of Environmental Protection
Office of Oil and Gas

Review: *AJ*

Well Operator's Report of Well Work

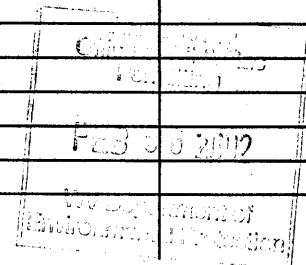
Farm name: George D. Park Operator Well No. Park # 2

LOCATION: Elevation: 1635' Quadrangle: Big Run 7.5'

District: Church County: Wetzel
Latitude: 400 Feet South of 39 Deg. 37 Min. 30 Sec.
Longitude 5520 Feet West of 80 Deg. 50 Min. 00 Sec.

Company: D.A.C.

	Casing & Tubing	Used in drilling	Left in well	Cement fill up Cu. Ft.
Address: P.O. Box 99	9-5/8"	200'	200'	55 sks
Alma, WV 26320	7"	1900'	1900'	100 sks
Agent: Kenneth Mason	4-1/2"	3900'	3900'	150 sks
Inspector: Randal Micks				
Date Permit Issued: 10/23/2001				
Date Well Work Commenced: 11/05/01				
Date Well Work Completed: 11/12/01				
Verbal Plugging:				
Date Permission granted on:				
Rotary X Cable Rig				
Total Depth (feet): 3852				
Fresh Water Depth (ft.): N/A				
Salt Water Depth (ft.): N/A				
Is coal being mined in area (N/Y)? N				
Coal Depths (ft.): 1352				



OPEN FLOW DATA

Producing formation Gordon Pay zone depth (ft) 3471-3520
 Gas: Initial open flow 42 MCF/d Oil: Initial open flow Bbl/d
 Final open flow 120 MCF/d Final open flow Bbl/d
 Time of open flow between initial and final tests Hours
 Static rock Pressure 1100 psig (surface pressure) after Hours

Second producing formation Pay zone depth (ft)
 Gas: Initial open flow MCF/d Oil: Initial open flow Bbl/d
 Final open flow MCF/d Final open flow Bbl/d
 Time of open flow between initial and final tests Hours
 Static rock Pressure psig (surface pressure) after Hours

NOTE: ON BACK OF THIS FORM PUT THE FOLLOWING: 1). DETAILS OF PERFORATED INTERVALS, FRACTURING OR STIMULATING, PHYSICAL CHANGE, ETC. 2). THE WELL LOG WHICH IS A SYSTEMATIC DETAILED GEOLOGICAL RECORD OF ALL FORMATIONS, INCLUDING COAL ENCOUNTERED BY THE WELLBORE.

Signed: D.A.C. *Kenny Mason*
 By: Kenny Mason

MAR 08 2002

WET 1866

API # 47-103-01866

Park #2

Stage #1	perfs	sand sks
Gordon/4 th	3421-3520	230 sks

ISIP = 3067#

Drillers Log

Electric Log Tops

Sd/Sh	0-12'
Sh/Sd	12'-30'
Sd/Sh	30'-115'
Sd/Sh	115'-121'
RR	121'-143'
Sd/Sh	143'-312'
RR	312'-418'
Sand	418'-800'
RR/Sh	800'-950'
Sand	950'-1230'
Sd/Sh	1230'-1370'
Sh	1370'-1390'
Coal	1390'-1405'
Sh	1405'-2565'
B. Lime	2565'-2640'
Injun	2640'-2688'
Sd/Sh	2688'-3428'
Gordon	3428'-3852'
TD	3852'

Big Lime	2576
Gordon	3406

gas ck @ 2801 = no show
gas ck @ 3520 = no show