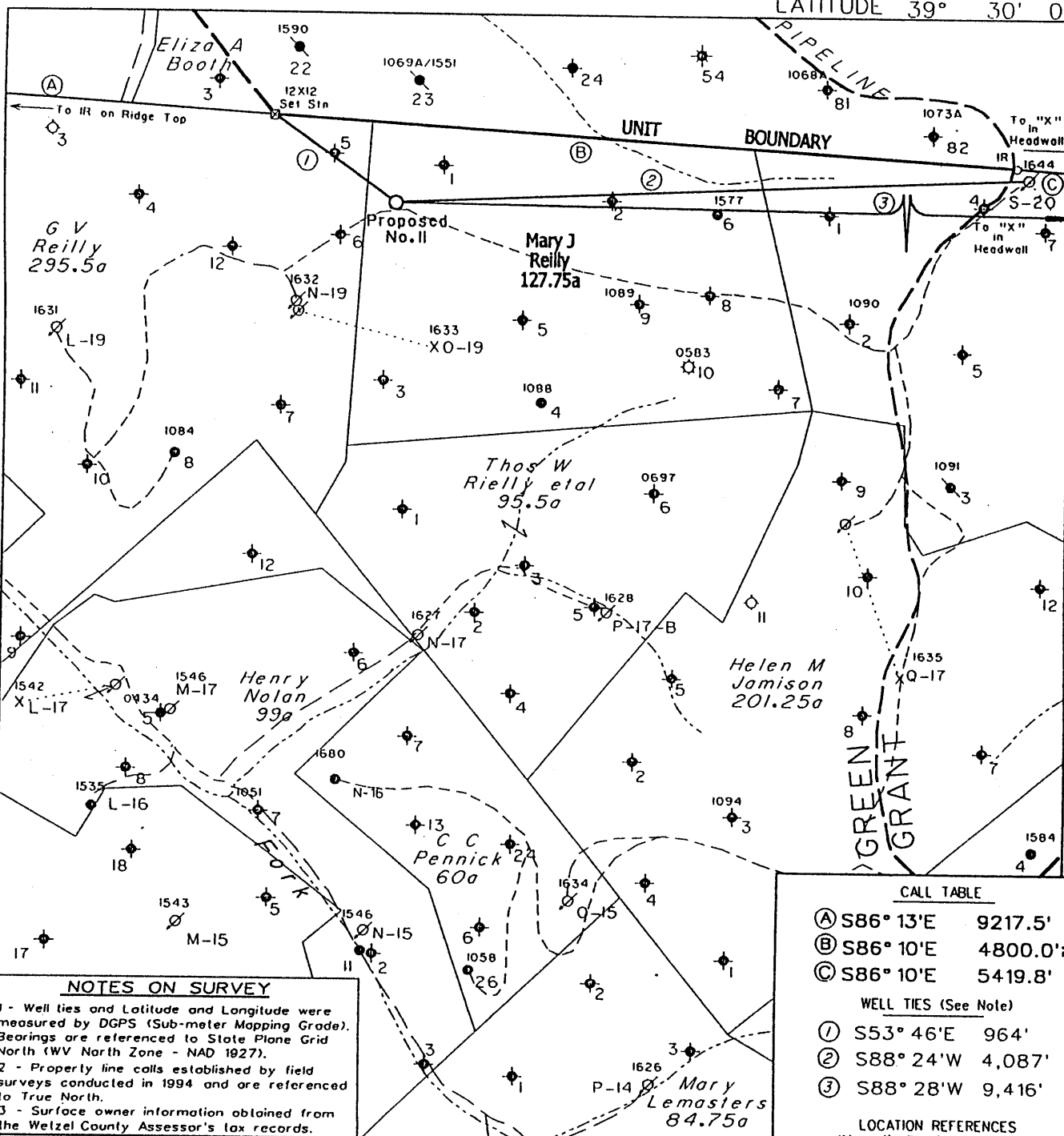


Longitude = 80° 40' 06.9"

LATITUDE 39° 30' 00"

550' TOP  
7.5' TOP  
LONGITUDE 80° 40' 31.1"  
Latitude = 39° 29' 31.1"



**NOTES ON SURVEY**

- 1 - Well ties and Latitude and Longitude were measured by DGPS (Sub-meter Mapping Grade). Bearings are referenced to State Plane Grid North (WV North Zone - NAD 1927).
- 2 - Property line calls established by field surveys conducted in 1994 and are referenced to True North.
- 3 - Surface owner information obtained from the Wetzel County Assessor's tax records.

CALL TABLE	
Ⓐ	S86° 13'E 9217.5'
Ⓑ	S86° 10'E 4800.0'
Ⓒ	S86° 10'E 5419.8'
WELL TIES (See Note)	
①	S53° 46'E 964'
②	S88° 24'W 4,087'
③	S88° 28'W 9,416'
LOCATION REFERENCES (Magnetic Bearing - Slope Dist.)	
NB2° W	98' 8" Oak
S31° E	84' 4" Wild Cherry

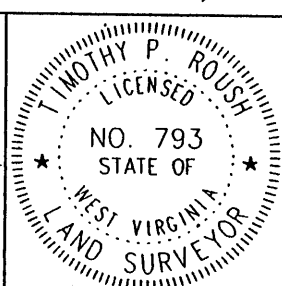
NOTE: No known water supply sources are located within 1000' of proposed well.  
 (+) DENOTES LOCATION OF WELL ON UNITED STATES TOPOGRAPHIC MAPS

◆ Denotes Water Supply Source.

FILE NO. 1037-74  
 MAP NO.      N      S      E      W  
 SCALE 1" = 1000'  
 MINIMUM DEGREE OF ACCURACY 1 in 200  
 PROVEN SOURCE OF ELEVATION DGPS Survey  
3/28/03

I THE UNDERSIGNED, HEREBY CERTIFY THAT THIS PLAT IS CORRECT TO THE BEST OF MY KNOWLEDGE AND BELIEF AND SHOWS ALL THE INFORMATION REQUIRED BY LAW AND THE REGULATIONS ISSUED AND PRESCRIBED BY THE DEPARTMENT OF MINES.

(SIGNED) *Timothy P. Roush*  
 TIMOTHY P. ROUSH PS 793



WEST VIRGINIA  
 Division of Environmental Protection  
 Office of Oil and Gas  
 1356 Hansford St.  
 Charleston, West Virginia 25301



DATE April 1, 2003  
 FARM M.J. Reilly NO. 11  
 API WELL NO. 47-103-01940

WELL TYPE: OIL  GAS  LIQUID INJECTION  WASTE DISPOSAL   
 (IF "GAS") PRODUCTION  STORAGE  DEEP  SHALLOW   
 LOCATION: ELEVATION 1,433' WATERSHED Piney Fork  
 DISTRICT Green COUNTY Wetzel  
 QUADRANGLE Centerpoint 7.5'  
 SURFACE OWNER W.Va. Public Lands Corp. ACREAGE 127 Ac.  
 OIL & GAS ROYALTY OWNER East Resources, et al. LEASE ACREAGE       
 LEASE NO.       
 PROPOSED WORK: DRILL  CONVERT  DRILL DEEPER  REDRILL  FRACTURE OR STIMULATE  PLUG OFF OLD FORMATION  PERFORATE NEW FORMATION  OTHER PHYSICAL CHANGE IN WELL (SPECIFY)       
 PLUG AND ABANDON  CLEAN OUT AND REPLUG   
 TARGET FORMATION Gordon ESTIMATED DEPTH 3,400'  
 WELL OPERATOR East Resources, Inc. DESIGNATED AGENT Michael McCown  
 ADDRESS P. O. Box 5519 ADDRESS P. O. Box 5519 DATE 02 2003  
Vienna, W.Va. 26105 Vienna, W.Va. 26105

WET 1940

State of West Virginia  
Division of Environmental Protection  
Section of Oil and Gas

*Ar B*

Well Operator's Report of Well Work

Farm name: WV Public Lands Corp  
LOCATION: Elevation: 1,433.00  
District: GREEN  
Latitude: 2,925 Feet south of  
Longitude: 550 Feet west of

Operator Well No.: M J REILLY 11  
Quadrangle: CENTERPOINT 7.5'  
County: WETZEL  
39 Deg 30 Min 0 Sec.  
80 Deg 40 Min 00 Sec.

Company: EAST RESOURCES, INC.  
P.O. BOX 5519  
VIENNA, WV 26105-5519

Agent: MICHAEL MCCOWN  
Inspector: MIKE UNDERWOOD  
Permit Issued: 04/28/03  
Well work Commenced: 05/01/03  
Well work Completed: 05/25/03  
Verbal plugging permission granted on:  
Rotary X Cable \_\_\_\_\_ Rig \_\_\_\_\_  
Total Depth (feet) 3500'  
Fresh water depths (ft) NA  
Salt water depths (ft) NA  
Is coal being mined in area (Y/N) N  
Coal Depths (ft): NA

Casing & Tubing Size	Used in Drilling	Left in Well	Cement Fill Up Cu. Ft.
7"	707'	707'	185 sks
4 1/2"	3438'	3438'	145 sks

RECEIVED  
Office of Oil & Gas Permitting  
AUG 21 2003  
WV Department of Environmental Protection

OPEN FLOW DATA Waterflood producer

Producing formation Gordon Pay zone depth (ft) 3336'-3349'  
 Gas: Initial open flow \_\_\_\_\_ MCF/d Oil: Initial open flow \_\_\_\_\_ Bbl/d  
 Final open flow \_\_\_\_\_ MCF/d Final open flow \_\_\_\_\_ Bbl/d  
 Time of open flow between initial and final tests \_\_\_\_\_ Hours  
 Static rock pressure \_\_\_\_\_ psig (surface pressure) \_\_\_\_\_ after \_\_\_\_\_ Hours

Second producing formation \_\_\_\_\_ Pay zone depth (ft) \_\_\_\_\_  
 Gas: Initial open flow \_\_\_\_\_ MCF/d Oil: Initial open flow \_\_\_\_\_ Bbl/d  
 Final open flow \_\_\_\_\_ MCF/d Final open flow \_\_\_\_\_ Bbl/d  
 Time of open flow between initial and final tests \_\_\_\_\_ Hours  
 Static rock pressure \_\_\_\_\_ psig (surface pressure) \_\_\_\_\_ after \_\_\_\_\_ Hours

NOTE: ON BACK OF THIS FORM, PUT THE FOLLOWING: 1) DETAILS OF PERFORATED INTERVALS, FRACTURING OR STIMULATING, PHYSICAL CHANGE, ETC. 2) THE WELL LOG WHICH IS A SYSTEMATIC DETAILED GEOLOGICAL RECORD OF ALL FORMATIONS, INCLUDING COAL ENCOUNTERED BY THE WELLBORE.

For: EAST RESOURCES, INC.  
By: *[Signature]*  
Date: 8/19/03

WET  
1940

**Treatment :**

Treated perforations 3328'-3348' w/ 250 gals 15% HCL, 271 bbls cross linked gel and 14,500 # 20/40 sand

**Well Log :**

Sand and Shale	0'	800'
Sand	800'	814'
Shale	814'	1062'
Sand	1062'	1110'
Shale	1110'	1220'
Sand	1220'	1238'
Shale	1238'	1370'
Sand	1370'	1398'
Shale	1398'	1737'
Sand	1737'	1772'
Shale	1772'	2100'
Sand	2100'	2168'
Shale	2168'	2230'
Sand	2230'	2287'
Shale	2287'	2484'
Big Lime	2484'	2544'
Big Injun	2544'	2720'
Shale	2720'	3306'
Gordon Stray	3306'	3336'
Gordon	3336'	3350'
shale	3350'	3500'
TD	3500'	