

MILLS WETZEL #13H BOTTOM HOLE STATE PLANE COORDINATES NORTH ZONE (N) 378396 (E) 1672067

MILLS WETZEL #13H BOTTOM HOLE UTM (NAD 83) 4376001 529003

MILLS WETZEL #13H BOTTOM HOLE L & L DECIMAL 39.53309 80.66270

MCDIFFITT PIPE, INC. 233 ACRES±

MILLS WETZEL #13H BOTTOM HOLE

MILLS WETZEL #13H LANDING POINT STATE PLANE COORDINATES NORTH ZONE (N) 374923 (E) 1673836

MILLS WETZEL #13H LANDING POINT L & L DECIMAL 39.52362 80.65627

MILLS WETZEL #13H LANDING POINT UTM (NAD 83) 4374951 529559

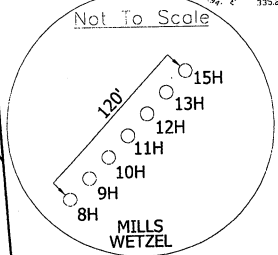
WHEELING JESUIT UNIVERSITY 221 OF 420.3 ACRES±

WHEELING JESUIT UNIVERSITY 77 OF 420.3 ACRES±

WHEELING JESUIT UNIVERSITY 60 OF 420.3 ACRES±

WV CONSERVATION COMMISSION 5104.5 ACRES±

WV CONSERVATION COMMISSION 5104.5 ACRES±



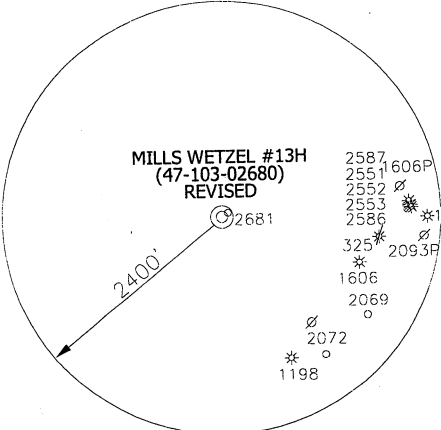
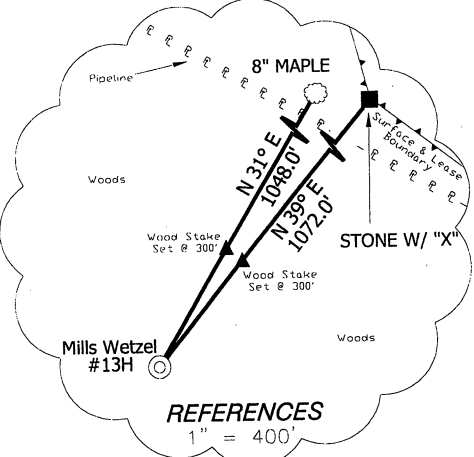
MILLS WETZEL #13H (47-103-02680) REVISED

MILLS WETZEL #13H STATE PLANE COORDINATES NORTH ZONE (N) 374041 (E) 1673620

MILLS WETZEL #13H L & L DECIMAL 39.52119 80.65699

MILLS WETZEL #13H UTM (NAD 83) 4374682 529498

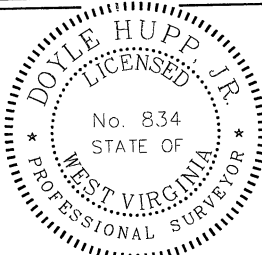
MILLS WETZEL #13H



NOTES ON SURVEY

TIES TO WELLS AND CORNERS ARE BASED ON STATE PLANE GRID NORTH WV NORTH ZONE NAD '27. LEASE BOUNDARY SHOWN HEREON TAKEN FROM A TITLE EXAMINATION BY PATRICK N. RADCLIFF DATED NOVEMBER 7, 2009 AND INFORMATION PROVIDED BY STONE ENERGY CORPORATION. SURFACE OWNER AND ADJOINER INFORMATION TAKEN FROM THE ASSESSOR AND COUNTY CLERK RECORDS OF WETZEL COUNTY IN JANUARY, 2011 AND INFORMATION PROVIDED BY STONE ENERGY CORPORATION. WELL LAT./LONG. ESTABLISHED BY SG-GPS. ORIGINAL PLAT DATE OF MAY 26, 2011.

I, THE UNDERSIGNED, HEREBY CERTIFY THAT THIS PLAT IS CORRECT TO THE BEST OF MY KNOWLEDGE AND BELIEF AND SHOWS ALL THE INFORMATION REQUIRED BY LAW AND THE REGULATIONS ISSUED AND PRESCRIBED BY THE DIVISION OF ENVIRONMENTAL PROTECTION.



(+) DENOTES LOCATION OF WELL ON UNITED STATES TOPOGRAPHIC MAPS. DATE OCTOBER 20, 2011. OPERATORS WELL NO. MILLS WETZEL #13H REVISED. API WELL NO. 47-103-02680. STATE COUNTY PERMIT Revised

P.S. 8.34 HUPP Surveying & Mapping P.O. Box 647 Grantsville, WV 26147 (304) 354-7035 EMAIL: hupp@troniernet.net

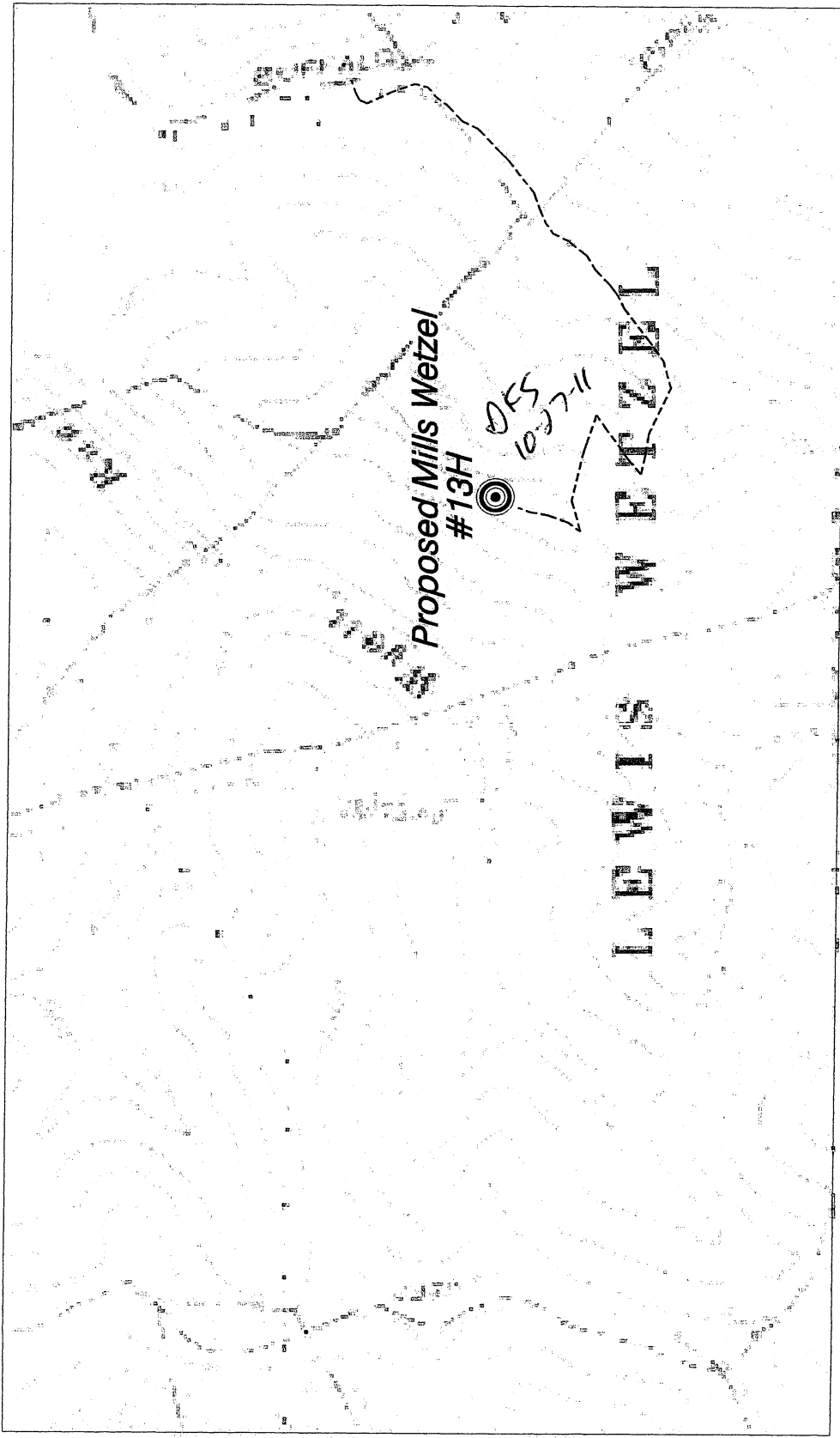
MINIMUM DEGREE OF ACCURACY 1/200 FILE NO. W1719 (BK49-38) SCALE 1" = 1000' PROVEN SOURCE OF ELEVATION SG-GPS (OPUS)

STATE OF WEST VIRGINIA DIVISION OF ENVIRONMENTAL PROTECTION OFFICE OF OIL AND GAS

WELL TYPE: OIL GAS X INJECTION WASTE DISPOSAL IF "GAS" PRODUCTION X STORAGE DEEP SHALLOW X. LOCATION: ELEVATION 1352' WATERSHED BUFFALO RUN DISTRICT GRANT COUNTY WETZEL QUADRANGLE PINE GROVE 7.5'. SURFACE OWNER WEST VIRGINIA CONSERVATION COMMISSION ACREAGE 5104.5 ± ROYALTY OWNER MILLS WETZEL LAND Inc. LEASE ACREAGE 5104.5 ± LEASE NO. PROPOSED WORK: DRILL X CONVERT DRILL DEEPER REDRILL FRACTURE OR STIMULATE X PLUG OFF OLD FORMATION PERFORATE NEW FORMATION PLUG AND ABANDON CLEAN OUT AND REPLUG OTHER PHYSICAL CHANGE IN WELL (SPECIFY) TARGET FORMATION MARCELLUS ESTIMATED DEPTH TVD 7,270' MD 12,100'

WELL OPERATOR STONE ENERGY CORPORATION DESIGNATED AGENT TIM MCGREGOR ADDRESS P.O. BOX 52807 LAFAYETTE, LA 70508 ADDRESS 6000 HAMPTON CENTER SUITE B MORGANTOWN WV 26505

MILLS WETZEL #13H(47-103-02680) REVISED



SCALE: 1-INCH = 1000-FEET

HUPP Surveying & Mapping

P.O. BOX 647 GRANTSVILLE, WV 26147
PH: (304)354-7035 E-MAIL: hupp@frontiernet.net

1" = 1000'

Pine Grove Quad

Stone Energy Corporation
P.O. Box 52807
Lafayette, LA 70508

Existing Access Road	---
1000' Water Sampling Radius	---
Possible Water Sources	#

NORTH

103-02680-H
DOM.