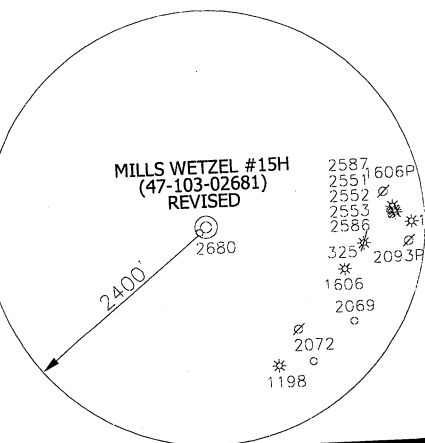
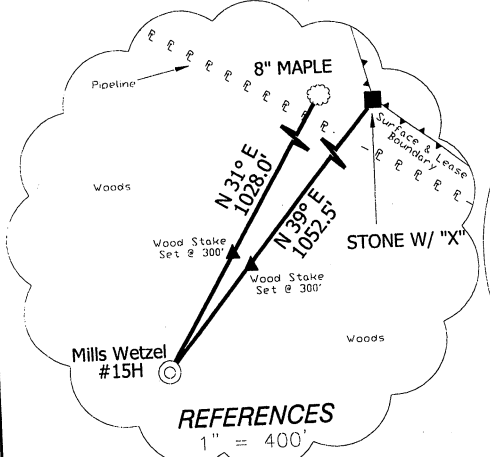
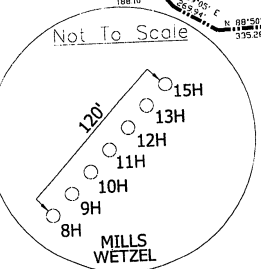
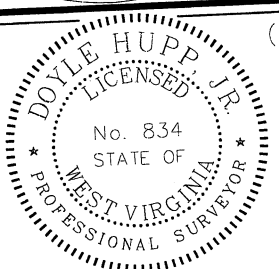


MILLS WETZEL #15H (47-103-02681) REVISED



NOTES ON SURVEY
TIES TO WELLS AND CORNERS ARE BASED ON STATE PLANE GRID NORTH WV NORTH ZONE NAD '27.
LEASE BOUNDARY SHOWN HEREON TAKEN FROM A TITLE EXAMINATION BY PATRICK N. RADCLIFF DATED NOVEMBER 7, 2009 AND INFORMATION PROVIDED BY STONE ENERGY CORPORATION.
SURFACE OWNER AND ADJOINER INFORMATION TAKEN FROM THE ASSESSOR AND COUNTY CLERK RECORDS OF WETZEL COUNTY IN JANUARY, 2011 AND INFORMATION PROVIDED BY STONE ENERGY CORPORATION.
WELL LAT./LONG. ESTABLISHED BY SG-GPS.
ORIGINAL PLAT DATE OF MAY 26, 2011.

I, THE UNDERSIGNED, HEREBY CERTIFY THAT THIS PLAT IS CORRECT TO THE BEST OF MY KNOWLEDGE AND BELIEF AND SHOWS ALL THE INFORMATION REQUIRED BY LAW AND THE REGULATIONS ISSUED AND PRESCRIBED BY THE DIVISION OF ENVIRONMENTAL PROTECTION.



(+) DENOTES LOCATION OF WELL ON UNITED STATES TOPOGRAPHIC MAPS.
DATE MAY 26, 20 11
OPERATORS WELL NO. MILLS WETZEL #15H
REVISED
API WELL NO. 47-103-02681
STATE COUNTY Revised

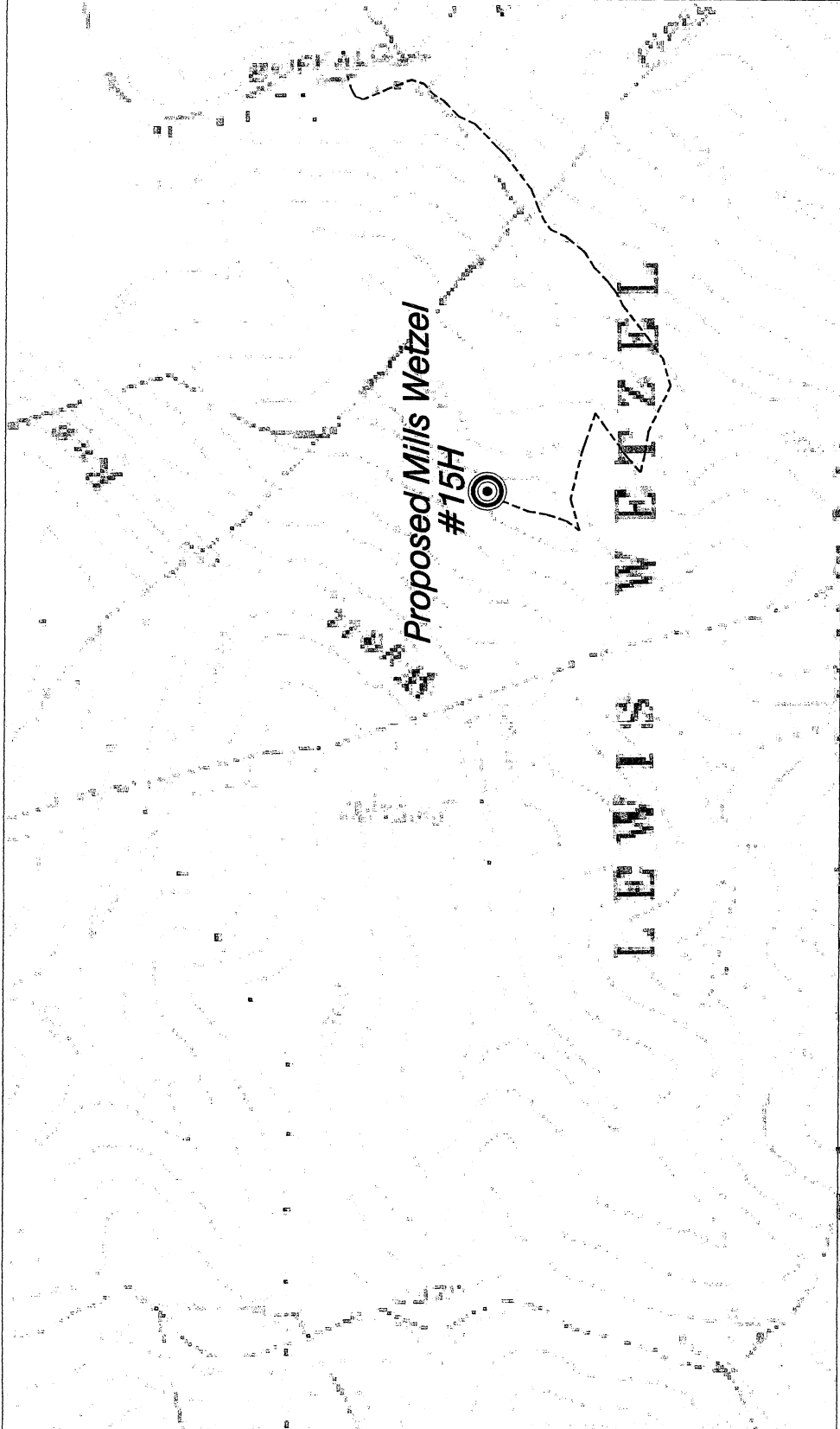
MINIMUM DEGREE OF ACCURACY 1/2500 FILE NO. W1719 (BK49-38)
PROVEN SOURCE OF ELEVATION SG-GPS (OPUS) SCALE 1" = 1000'

STATE OF WEST VIRGINIA
DIVISION OF ENVIRONMENTAL PROTECTION
OFFICE OF OIL AND GAS

WELL TYPE: OIL GAS LIQUID INJECTION WASTE DISPOSAL IF "GAS" PRODUCTION STORAGE DEEP SHALLOW
LOCATION: ELEVATION 1352' WATERSHED BUFFALO RUN
DISTRICT GRANT COUNTY WETZEL QUADRANGLE PINE GROVE 7.5'
SURFACE OWNER WEST VIRGINIA CONSERVATION COMMISSION ACREAGE 5104.5 ±
ROYALTY OWNER MILLS WETZEL LAND Inc. LEASE ACREAGE 5104.5±
PROPOSED WORK: DRILL CONVERT DRILL DEEPER REDRILL FRACTURE OR STIMULATE PLUG OFF OLD FORMATION PERFORATE NEW FORMATION PLUG AND ABANDON CLEAN OUT AND REPLUG OTHER
PHYSICAL CHANGE IN WELL (SPECIFY) _____ TARGET FORMATION MARCELLUS
ESTIMATED DEPTH TVD 7,270' MD 13,200'

WELL OPERATOR STONE ENERGY CORPORATION DESIGNATED AGENT TIM MCGREGOR
ADDRESS P.O. BOX 52807 LAFAYETTE, LA 70508 ADDRESS 6000 HAMPTON CENTER SUITE B MORGANTOWN WV 26505

MILLS WEITZEL #15H(47-103-02681) REVISED



103-02681 H



SCALE: 1-INCH = 1000-FEET

Existing Access Road
 1000' Water Sampling Radius
 Possible Water Sources

#

HUPP Surveying & Mapping

P.O. BOX 647 GRANTSVILLE, WV 26147
 PH: (304)354-7035 E-MAIL: hupp@frontiernet.net

1" = 1000'
 Pine Grove Quad

Stone Energy Corporation
 PO Box 52807
 Lafayette, LA 70508