

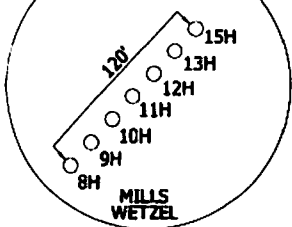
MILLS WETZEL #10H REVISED

MILLS WETZEL #10H
STATE PLANE
COORDINATES
NORTH ZONE
(N) 373990
(E) 1673588

MILLS WETZEL #10H
L & L DECIMAL
39.52105
80.65710

MILLS WETZEL #10H
UTM (NAD 83)
4374688
529488

Not To Scale



MILLS WETZEL #10H
LANDING POINT
STATE PLANE
COORDINATES
NORTH ZONE
(N) 373180
(E) 1673432

MILLS WETZEL #10H
LANDING POINT
L & L DECIMAL
39.51882
80.65782

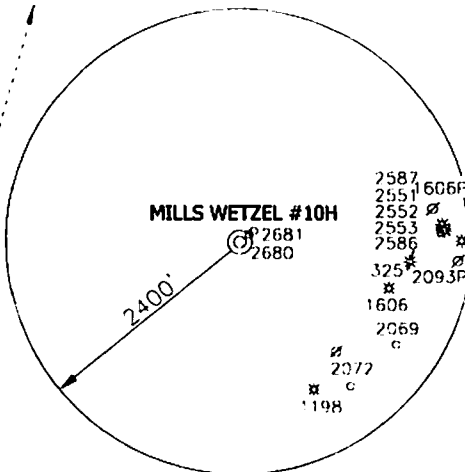
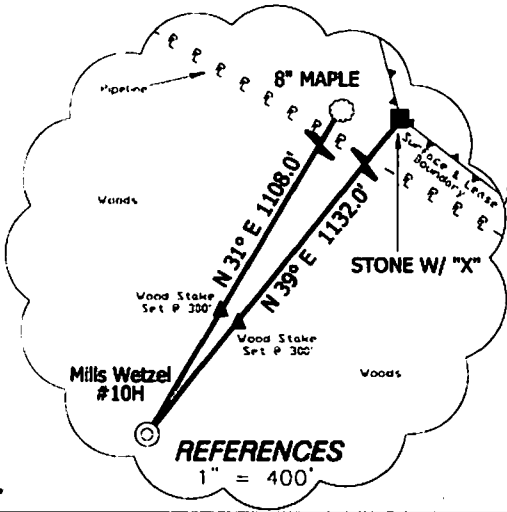
MILLS WETZEL #10H
LANDING POINT
UTM (NAD 83)
4374418
529445

MILLS WETZEL #10H
BOTTOM HOLE

MILLS WETZEL #10H
BOTTOM HOLE
STATE PLANE
COORDINATES
NORTH ZONE
(N) 370578
(E) 1674817

MILLS WETZEL #10H
BOTTOM HOLE
L & L DECIMAL
39.51173
80.65259

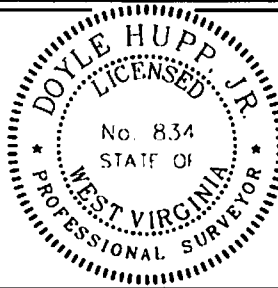
MILLS WETZEL #10H
BOTTOM HOLE
UTM (NAD 83)
4373633
529880



NOTES ON SURVEY

TIES TO WELLS AND CORNERS ARE BASED ON STATE PLANE GRID NORTH WV NORTH ZONE NAD '27. LEASE BOUNDARY SHOWN HEREON TAKEN FROM A TITLE EXAMINATION BY PATRICK N. RADCLIFF DATED NOVEMBER 7, 2009 AND INFORMATION PROVIDED BY STONE ENERGY CORPORATION. SURFACE OWNER AND ADJOINER INFORMATION TAKEN FROM THE ASSESSOR AND COUNTY CLERK RECORDS OF WETZEL COUNTY IN JANUARY, 2011 AND INFORMATION PROVIDED BY STONE ENERGY CORPORATION. WELL LAT/LONG ESTABLISHED BY SG GPS. ORIGINAL PLAT DATE OF JUNE 1, 2011.

I, THE UNDERSIGNED, HEREBY CERTIFY THAT THIS PLAT IS CORRECT TO THE BEST OF MY KNOWLEDGE AND BELIEF AND SHOWS ALL THE INFORMATION REQUIRED BY LAW AND THE REGULATIONS ISSUED AND PRESCRIBED BY THE DIVISION OF ENVIRONMENTAL PROTECTION.



(+) DENOTES LOCATION OF WELL ON UNITED STATES TOPOGRAPHIC MAPS.

DATE OCTOBER 20, 2011
OPERATORS WELL NO. MILLS WETZEL #10H
REVISED
API NO. 47-103-02706H
WELL NO. 47-103-02706H
STAIL COUNTY PERMIT

P.S. 8.34
Doyle Hupp, Jr.
HUPP Surveying & Mapping
P.O. Box 647 Grantsville, WV 26147
(304) 354-7035 EMAIL: hupp@frontiernet.net

MINIMUM DEGREE OF ACCURACY 1/2500 FILE NO. W1719 (BK49-38)
PROVEN SOURCE OF ELEVATION SG-GPS (OPUS) SCALE 1" = 1000'

STATE OF WEST VIRGINIA
DIVISION OF ENVIRONMENTAL PROTECTION
OFFICE OF OIL AND GAS



WELL TYPE: OIL GAS LIQUID INJECTION WASTE DISPOSAL IF "GAS" PRODUCTION STORAGE DEEP SHALLOW

LOCATION: ELEVATION 1352' WATERSHED BUFFALO RUN

DISTRICT GRANT COUNTY WETZEL QUADRANGLE PINE GROVE 7.5'

SURFACE OWNER WEST VIRGINIA CONSERVATION COMMISSION ACREAGE 5104.5 ±

ROYALTY OWNER MILLS WETZEL LAND Inc. LEASE ACREAGE 5104.5 ±

PROPOSED WORK: LEASE NO. _____

DRILL CONVERT DRILL DEEPER REDRILL FRACTURE OR STIMULATE PLUG OFF OLD

FORMATION PERFORATE NEW FORMATION PLUG AND ABANDON CLEAN OUT AND RIPLUG OTHER

PHYSICAL CHANGE IN WELL (SPECIFY) _____ TARGET FORMATION MARCELLUS

ESTIMATED DEPTH 1VD 7,270' MD 11,600'

WELL OPERATOR STONE ENERGY CORPORATION DESIGNATED AGENT TIM MCGREGOR

ADDRESS P.O. BOX 52807 LAFAYETTE, LA 70508 ADDRESS 6000 HAMPTON CENTER SUITE B MORGANTOWN WV 26505