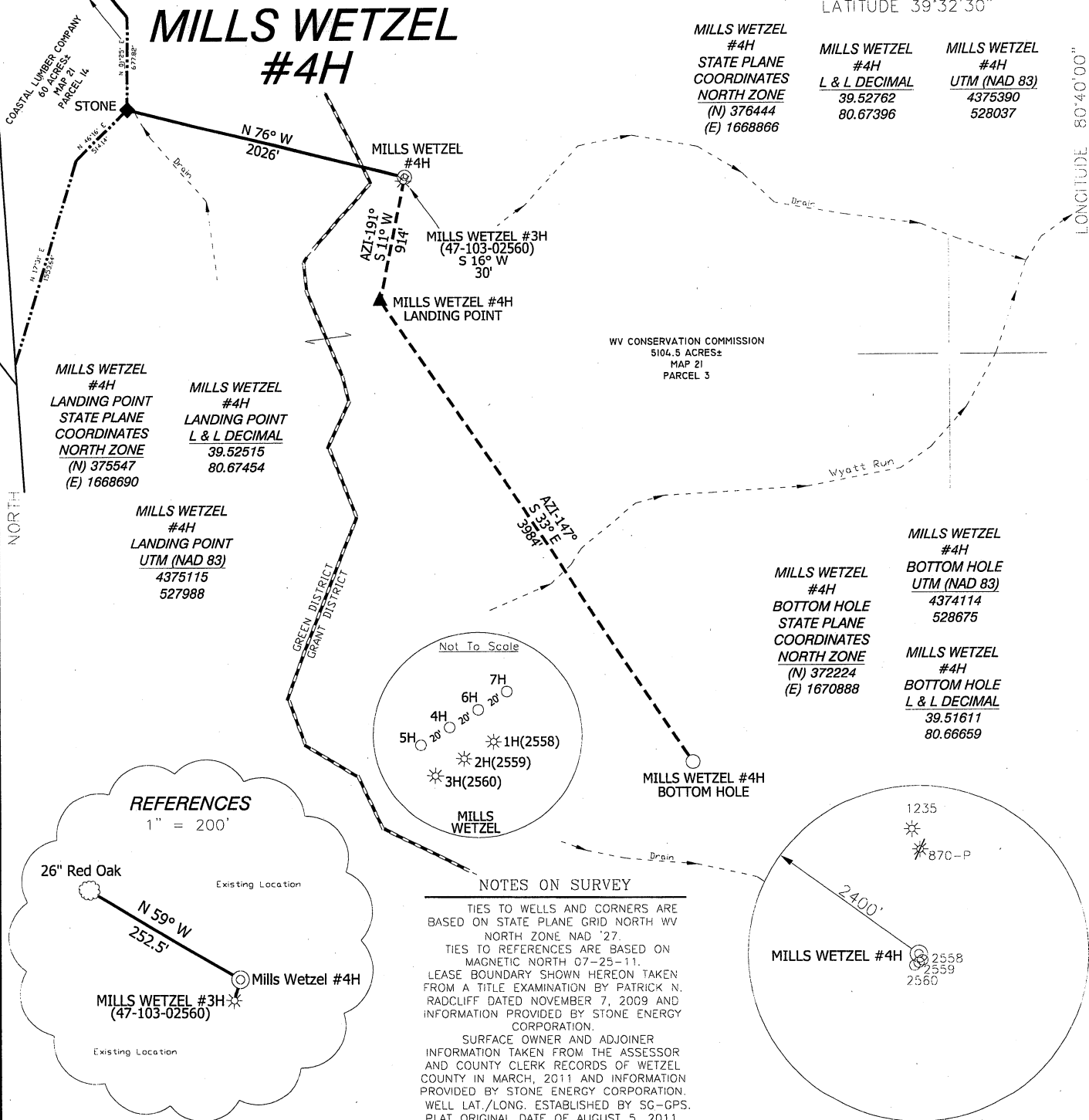


MILLS WETZEL #4H

MILLS WETZEL #4H
STATE PLANE COORDINATES NORTH ZONE
(N) 376444
(E) 1668866

MILLS WETZEL #4H
L & L DECIMAL
39.52762
80.67396

MILLS WETZEL #4H
UTM (NAD 83)
4375390
528037



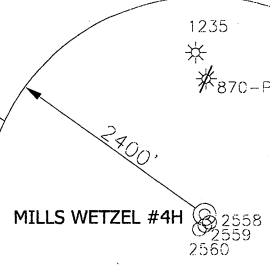
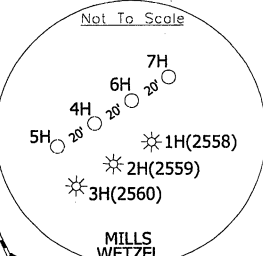
MILLS WETZEL #4H
LANDING POINT
STATE PLANE COORDINATES NORTH ZONE
(N) 375547
(E) 1668690

MILLS WETZEL #4H
LANDING POINT
L & L DECIMAL
39.52515
80.67454

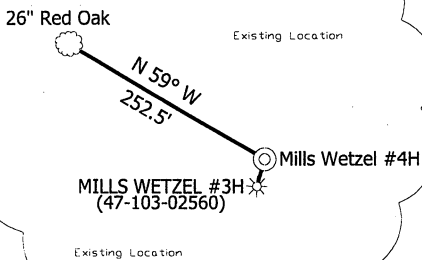
MILLS WETZEL #4H
LANDING POINT
UTM (NAD 83)
4375115
527988

MILLS WETZEL #4H
BOTTOM HOLE
STATE PLANE COORDINATES NORTH ZONE
(N) 372224
(E) 1670888

MILLS WETZEL #4H
BOTTOM HOLE
UTM (NAD 83)
4374114
528675
MILLS WETZEL #4H
BOTTOM HOLE
L & L DECIMAL
39.51611
80.66659



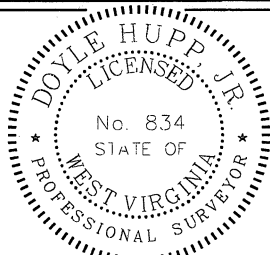
REFERENCES
1" = 200'



NOTES ON SURVEY

TIES TO WELLS AND CORNERS ARE BASED ON STATE PLANE GRID NORTH WV NORTH ZONE NAD '27.
TIES TO REFERENCES ARE BASED ON MAGNETIC NORTH 07-25-11.
LEASE BOUNDARY SHOWN HEREON TAKEN FROM A TITLE EXAMINATION BY PATRICK N. RADCLIFF DATED NOVEMBER 7, 2009 AND INFORMATION PROVIDED BY STONE ENERGY CORPORATION.
SURFACE OWNER AND ADJOINER INFORMATION TAKEN FROM THE ASSESSOR AND COUNTY CLERK RECORDS OF WETZEL COUNTY IN MARCH, 2011 AND INFORMATION PROVIDED BY STONE ENERGY CORPORATION.
WELL LAT./LONG. ESTABLISHED BY SG-GPS. PLAT ORIGINAL DATE OF AUGUST 5, 2011.

I, THE UNDERSIGNED, HEREBY CERTIFY THAT THIS PLAT IS CORRECT TO THE BEST OF MY KNOWLEDGE AND BELIEF AND SHOWS ALL THE INFORMATION REQUIRED BY LAW AND THE REGULATIONS ISSUED AND PRESCRIBED BY THE DIVISION OF ENVIRONMENTAL PROTECTION.



(+) DENOTES LOCATION OF WELL ON UNITED STATES TOPOGRAPHIC MAPS.

DATE OCTOBER 7, 20 11
OPERATORS WELL NO. MILLS WETZEL #4H
API WELL NO. 47-103-02720 H
STATE COUNTY PERMIT

P.S. 8.34
Doyle Hupp Jr.
HUPP Surveying & Mapping
P.O. Box 647 Grantsville, WV 26147
(304) 354-7035 EMAIL: hupp@frontiernet.net

MINIMUM DEGREE OF ACCURACY 1/2500 FILE NO. W1719 (BK57-48)
PROVEN SOURCE OF ELEVATION SG-GPS (OPUS) SCALE 1" = 1000'

STATE OF WEST VIRGINIA
DIVISION OF ENVIRONMENTAL PROTECTION
OFFICE OF OIL AND GAS

WELL TYPE: OIL GAS LIQUID INJECTION WASTE DISPOSAL IF "GAS" PRODUCTION STORAGE DEEP SHALLOW

LOCATION: ELEVATION 1331' WATERSHED TRIBUTARY OF WYATT RUN
DISTRICT GRANT COUNTY WETZEL QUADRANGLE PINE GROVE 7.5'

SURFACE OWNER WEST VIRGINIA CONSERVATION COMMISSION ACREAGE 5104.5 ±
ROYALTY OWNER MILLS WETZEL LAND Inc. LEASE ACREAGE 5104.5±

PROPOSED WORK: LEASE NO. _____
DRILL CONVERT DRILL DEEPER REDRILL FRACTURE OR STIMULATE PLUG OFF OLD FORMATION PERFORATE NEW FORMATION PLUG AND ABANDON CLEAN OUT AND REPLUG OTHER _____
PHYSICAL CHANGE IN WELL (SPECIFY) _____ TARGET FORMATION MARCELLUS
ESTIMATED DEPTH 7,350' TVD 12,500' MD

WELL OPERATOR STONE ENERGY CORPORATION DESIGNATED AGENT TIM MCGREGOR
ADDRESS P.O. BOX 52807 LAFAYETTE, LA 70508 ADDRESS 6000 HAMPTON CENTER SUITE B, MORGANTOWN WV 26505

Well Site Safety Plan
Location for Proposed Mills-Wetzel #4H, 5H, 6H, and 7H wells



STONE
ENERGY

Stone Energy Corporation
6000 Hampton Center, Suite B
Morgantown, WV 26505
(304) 225-1600

Dm H
10-13-11
DKS 10-13-11



Base map: Pine Grove, WV USGS 7.5' topographic map
Date Printed: 10/5/2011