

Revised

FORM WW 6

LONG. 80°40'25.8" 2030'

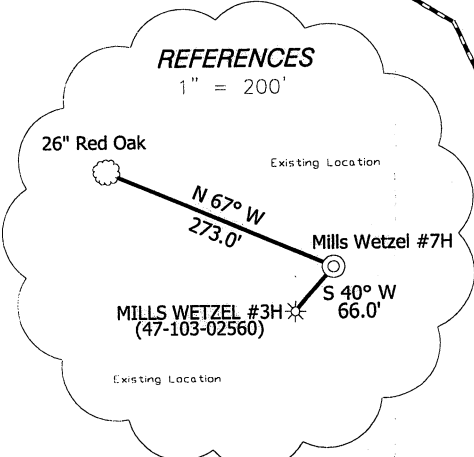
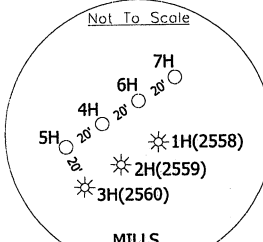
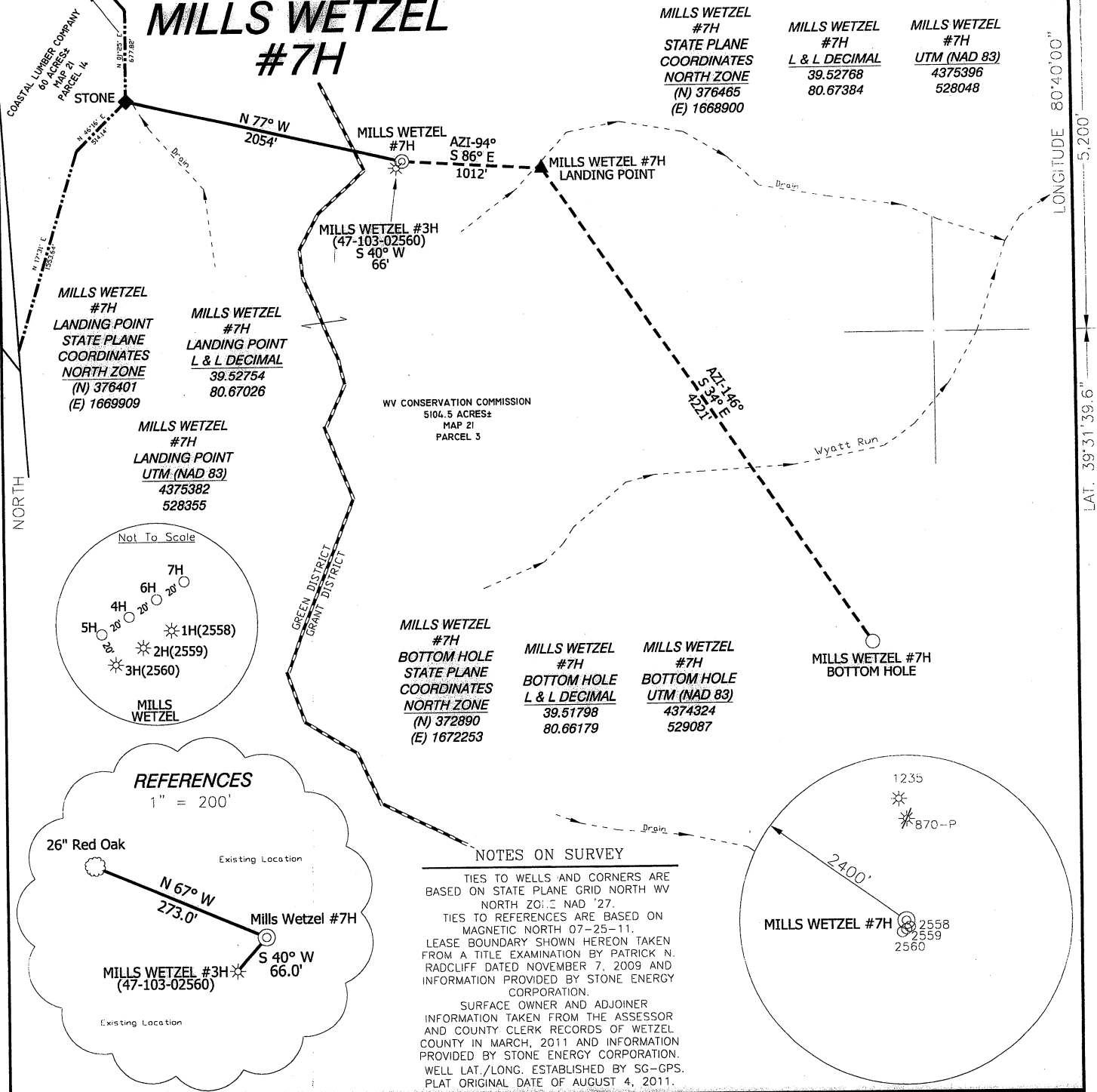
LATITUDE 39°32'30"

MILLS WETZEL #7H

MILLS WETZEL #7H
STATE PLANE COORDINATES
NORTH ZONE
(N) 376465
(E) 1668900

MILLS WETZEL #7H
L & L DECIMAL
39.52768
80.67384

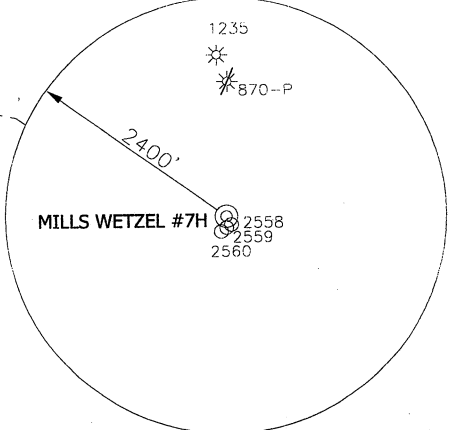
MILLS WETZEL #7H
UTM (NAD 83)
4375396
528048



MILLS WETZEL #7H
BOTTOM HOLE
STATE PLANE COORDINATES
NORTH ZONE
(N) 372890
(E) 1672253

MILLS WETZEL #7H
BOTTOM HOLE
L & L DECIMAL
39.51798
80.66179

MILLS WETZEL #7H
BOTTOM HOLE
UTM (NAD 83)
4374324
529087



NOTES ON SURVEY

TIES TO WELLS AND CORNERS ARE BASED ON STATE PLANE GRID NORTH WV NORTH ZONE NAD '27.

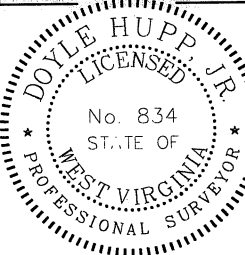
TIES TO REFERENCES ARE BASED ON MAGNETIC NORTH 07-25-11.

LEASE BOUNDARY SHOWN HEREON TAKEN FROM A TITLE EXAMINATION BY PATRICK N. RADCLIFF DATED NOVEMBER 7, 2009 AND INFORMATION PROVIDED BY STONE ENERGY CORPORATION.

SURFACE OWNER AND ADJOINER INFORMATION TAKEN FROM THE ASSESSOR AND COUNTY CLERK RECORDS OF WETZEL COUNTY IN MARCH, 2011 AND INFORMATION PROVIDED BY STONE ENERGY CORPORATION.

WELL LAT./LONG. ESTABLISHED BY SG-GPS. PLAT ORIGINAL DATE OF AUGUST 4, 2011.

I, THE UNDERSIGNED, HEREBY CERTIFY THAT THIS PLAT IS CORRECT TO THE BEST OF MY KNOWLEDGE AND BELIEF AND SHOWS ALL THE INFORMATION REQUIRED BY LAW AND THE REGULATIONS ISSUED AND PRESCRIBED BY THE DIVISION OF ENVIRONMENTAL PROTECTION.



(+) DENOTES LOCATION OF WELL ON UNITED STATES TOPOGRAPHIC MAPS.

DATE OCTOBER 7, 20 11

OPERATORS WELL NO. MILLS WETZEL #7H

API WELL NO. 47-103-02723H

STATE COUNTY PERMIT

P.S. 834

Doyle Hupp, Jr.

HUPP Surveying & Mapping
P.O. Box 647 Grantsville, WV 26147
(304) 354-7035 EMAIL: hupp@frontiernet.net

MINIMUM DEGREE OF ACCURACY 1/2500 FILE NO. W1719 (BK57-48)

PROVEN SOURCE OF ELEVATION SG-GPS (OPUS) SCALE 1" = 1000'

STATE OF WEST VIRGINIA
DIVISION OF ENVIRONMENTAL PROTECTION
OFFICE OF OIL AND GAS

WELL TYPE : OIL GAS INJECTION WASTE DISPOSAL IF "GAS" PRODUCTION STORAGE DEEP SHALLOW

LOCATION :
ELEVATION 1331' WATERSHED TRIBUTARY OF WYATT RUN
DISTRICT GRANT COUNTY WETZEL QUADRANGLE PINE GROVE 7.5'

SURFACE OWNER WEST VIRGINIA CONSERVATION COMMISSION ACREAGE 5104.5 ±
ROYALTY OWNER MILLS WETZEL LAND Inc. LEASE ACREAGE 5104.5±
PROPOSED WORK : LEASE NO. _____

DRILL CONVERT DRILL DEEPER REDRILL FRACTURE OR STIMULATE PLUG OFF OLD FORMATION PERFORATE NEW FORMATION PLUG AND ABANDON CLEAN OUT AND REPLUG OTHER _____

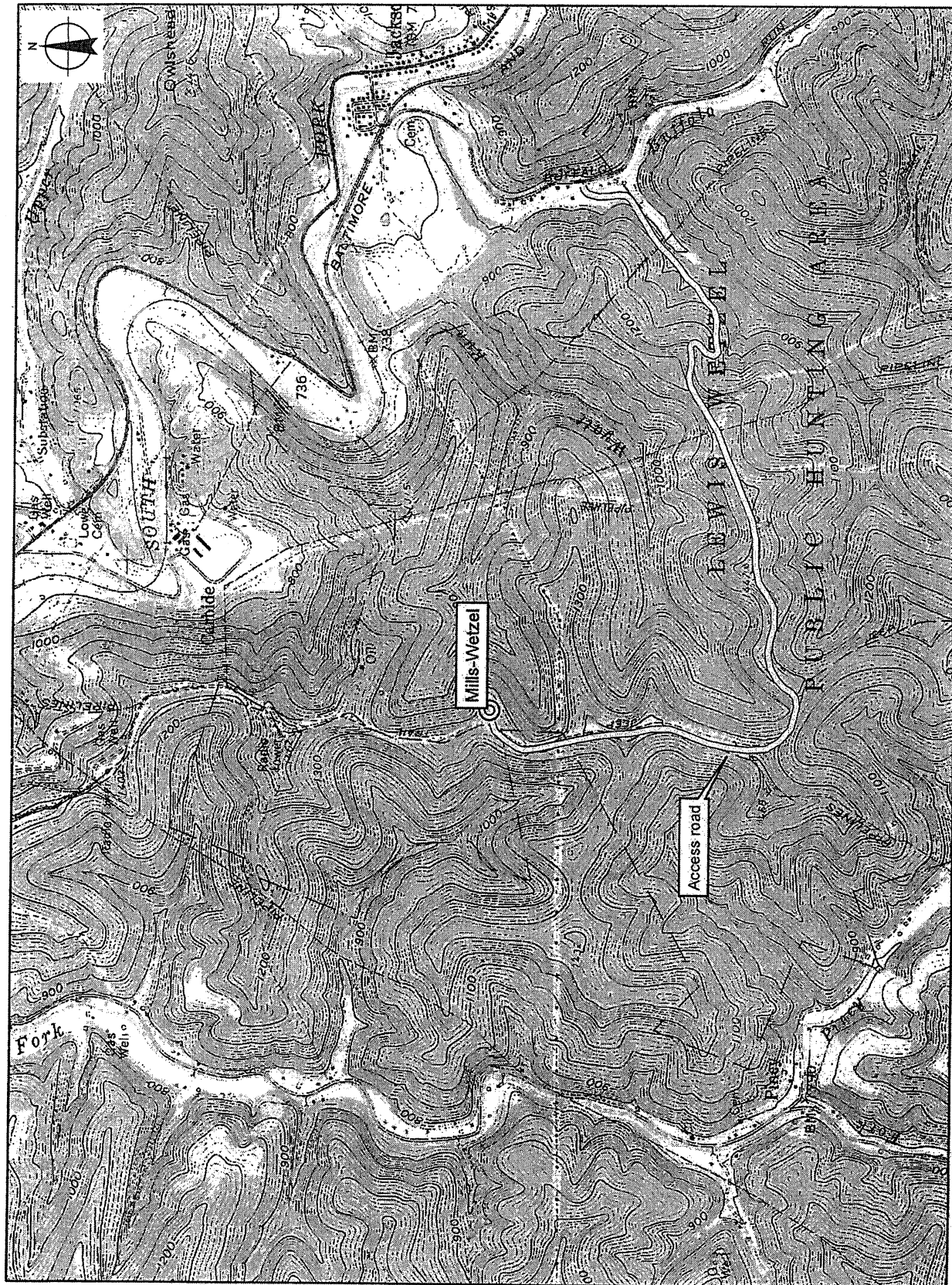
PHYSICAL CHANGE IN WELL (SPECIFY) _____ TARGET FORMATION MARCELLUS
ESTIMATED DEPTH 7,350' TVD 12,780' MD

WELL OPERATOR STONE ENERGY CORPORATION DESIGNATED AGENT TIM MCGREGOR
ADDRESS P.O. BOX 52807 LAFAYETTE, LA 70508 ADDRESS 6000 HAMPTON CENTER SUITE B MORGANTOWN WV 26505

COUNTY NAME PERMIT

01/27/2012

Location for Proposed Mills-Wetzel #4H, 5H, 6H, and 7H wells



Stone Energy Corporation
 6000 Hampton Center, Suite B
 Morgantown, WV 26505
 (304) 225-1600

DMH
 10-17-11
 DES
 10-13-11



Base map: Pine Grove, WV USGS 7.5' topographic map
 Date Printed: 10/5/2011

103-02723 H