

NORTH HENDERSON UNIT 3H

WELL 3H
STATE PLANE COORDINATES
 (NORTH ZONE NAD 27)
 N. 436,483
 E. 1,696,624

WELL 3H (NAD'27)
 LAT=(N) 39°41'36.2"
 LONG=(W) 80°34'41.2"

WELL 3H (NAD'27)
 LAT=(N) 39.69340
 LONG=(W) 80.57811

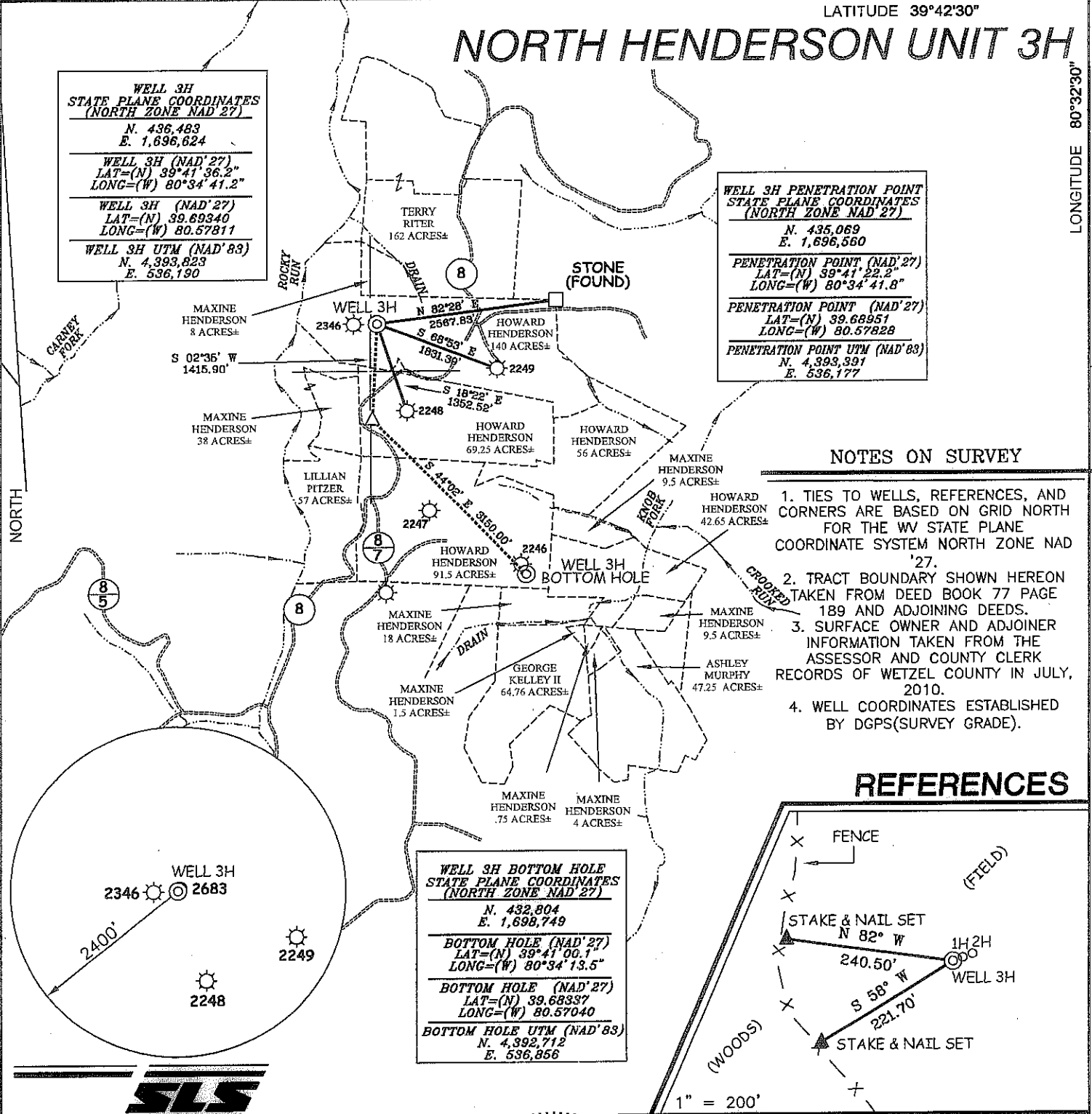
WELL 3H UTM (NAD'83)
 N. 4,393,823
 E. 536,190

WELL 3H PENETRATION POINT
STATE PLANE COORDINATES
 (NORTH ZONE NAD 27)
 N. 435,069
 E. 1,696,560

PENETRATION POINT (NAD'27)
 LAT=(N) 39°41'22.2"
 LONG=(W) 80°34'41.8"

PENETRATION POINT (NAD'27)
 LAT=(N) 39.68951
 LONG=(W) 80.57828

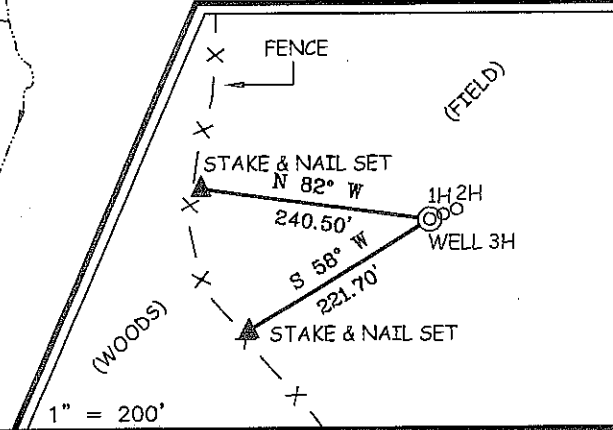
PENETRATION POINT UTM (NAD'83)
 N. 4,393,391
 E. 536,177



NOTES ON SURVEY

1. TIES TO WELLS, REFERENCES, AND CORNERS ARE BASED ON GRID NORTH FOR THE WV STATE PLANE COORDINATE SYSTEM NORTH ZONE NAD '27.
2. TRACT BOUNDARY SHOWN HEREON TAKEN FROM DEED BOOK 77 PAGE 189 AND ADJOINING DEEDS.
3. SURFACE OWNER AND ADJOINER INFORMATION TAKEN FROM THE ASSESSOR AND COUNTY CLERK RECORDS OF WETZEL COUNTY IN JULY, 2010.
4. WELL COORDINATES ESTABLISHED BY DGPS(SURVEY GRADE).

REFERENCES



WELL 3H BOTTOM HOLE
STATE PLANE COORDINATES
 (NORTH ZONE NAD 27)
 N. 432,804
 E. 1,698,749

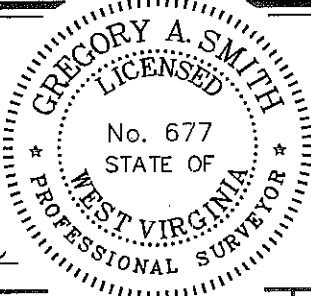
BOTTOM HOLE (NAD'27)
 LAT=(N) 39°41'00.1"
 LONG=(W) 80°34'13.5"

BOTTOM HOLE (NAD'27)
 LAT=(N) 39.68337
 LONG=(W) 80.57040

BOTTOM HOLE UTM (NAD'83)
 N. 4,392,712
 E. 536,856




I THE UNDERSIGNED, HEREBY CERTIFY THAT THIS PLAT IS CORRECT TO THE BEST OF MY KNOWLEDGE AND BELIEF AND SHOWS ALL THE INFORMATION REQUIRED BY LAW AND THE REGULATIONS ISSUED AND PRESCRIBED BY THE DIVISION OF ENVIRONMENTAL PROTECTION.



(+) DENOTES LOCATION OF WELL ON UNITED STATES TOPOGRAPHIC MAPS.
 DATE AUGUST 29, 20 11
 OPERATORS WELL NO. NORTH HENDERSON UNIT 3H
 API WELL NO. 47-103-02750
 STATE COUNTY PERMIT

MINIMUM DEGREE OF ACCURACY 1 / 200 FILE NO. 7578P3HR(343-49)
 PROVEN SOURCE OF ELEVATION DGPS (SUBMETER MAPPING GRADE) SCALE 1" = 2,000'

STATE OF WEST VIRGINIA
 DIVISION OF ENVIRONMENTAL PROTECTION
 OFFICE OF OIL AND GAS



WELL TYPE: OIL GAS LIQUID INJECTION WASTE DISPOSAL IF "GAS" PRODUCTION ST DEEP SHALLOW

LOCATION: ELEVATION 1356' WATERSHED ROCKY RUN
 DISTRICT CENTER COUNTY WETZEL QUADRANGLE LITTLETON 7.5'

SURFACE OWNER HOWARD HENDERSON ACREAGE 140±
 ROYALTY OWNER MAXINE HENDERSON ET AL LEASE ACREAGE 140, 69.25, 91.5, 42.65, 18, 64.76, 1.5, .75, 4, & 47.25± LEASE NO.

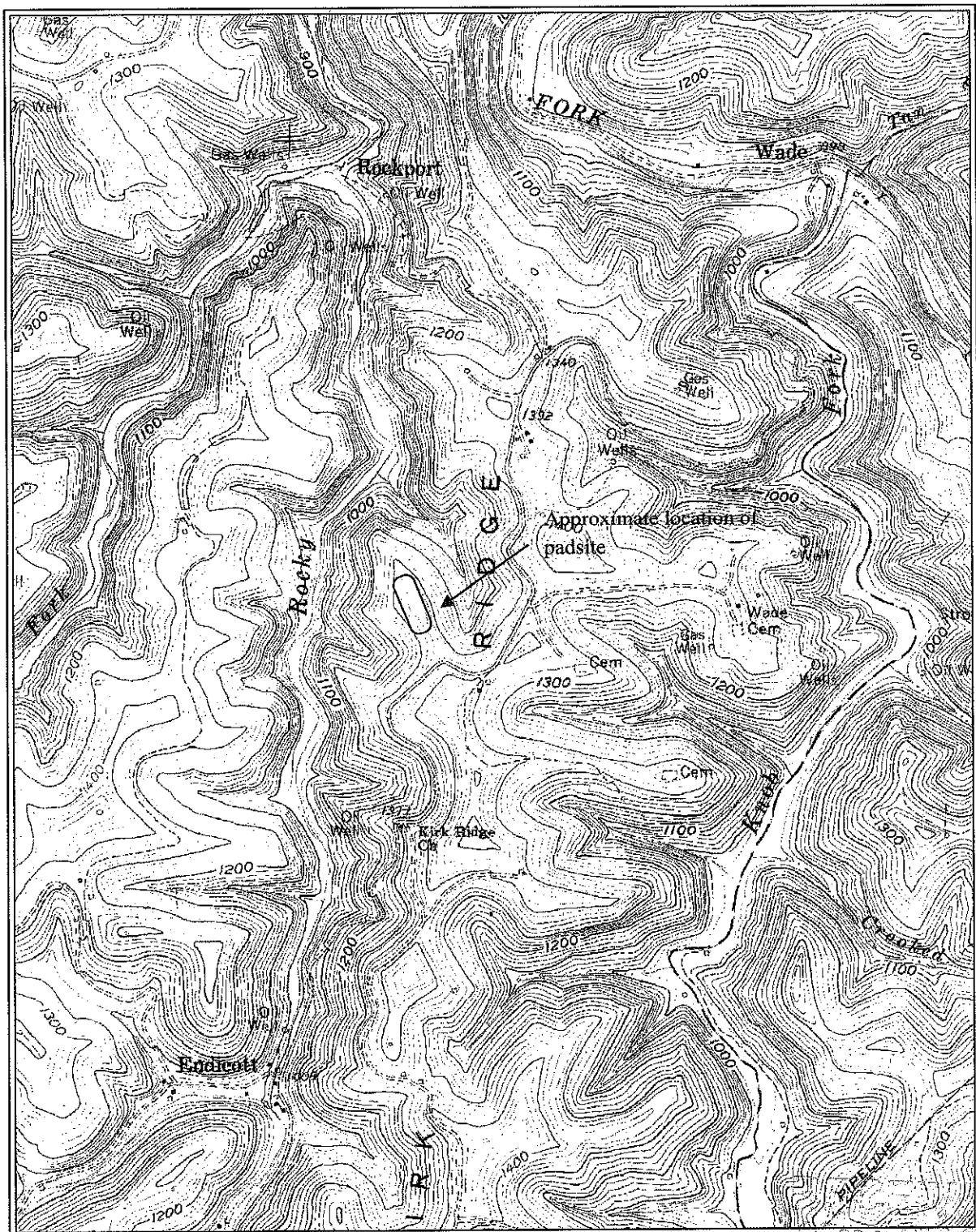
PROPOSED WORK: DRILL CONVERT DRILL DEEPER REDRILL FRACTURE OR STIMULATE PLUG OFF OLD FORMATION PERFORATE NEW FORMATION PLUG AND ABANDON CLEAN OUT AND REPLUG OTHER

PHYSICAL CHANGE IN WELL (SPECIFY) TARGET FORMATION MARCELLUS
 ESTIMATED DEPTH 7,597' HORIZONTAL LEG

WELL OPERATOR GRENADIER ENERGY PARTNERS, LLC DESIGNATED AGENT SHARON BARTH-CT CORP.
 ADDRESS 1610 WOODSTEAD COURT, SUITE 330 ADDRESS 707 VIRGINIA ST. EAST 15TH FL.
THE WOODLANDS, TX 77380 CHARLESTON, WV 25301

103-027504

Pad Site Topo Map



PETRA 10/19/2011 4:47:10 PM

JUL 19 2012

WV Department of
Environmental Protection
07/20/2012