

LATITUDE 39° 42' 30"

**SHREVE-WATSON UNIT 2H
K. SHREVE LEASE
100.0 ACRES ±**

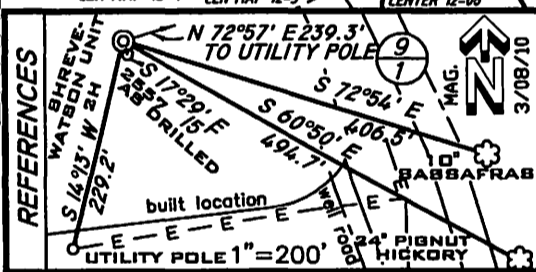
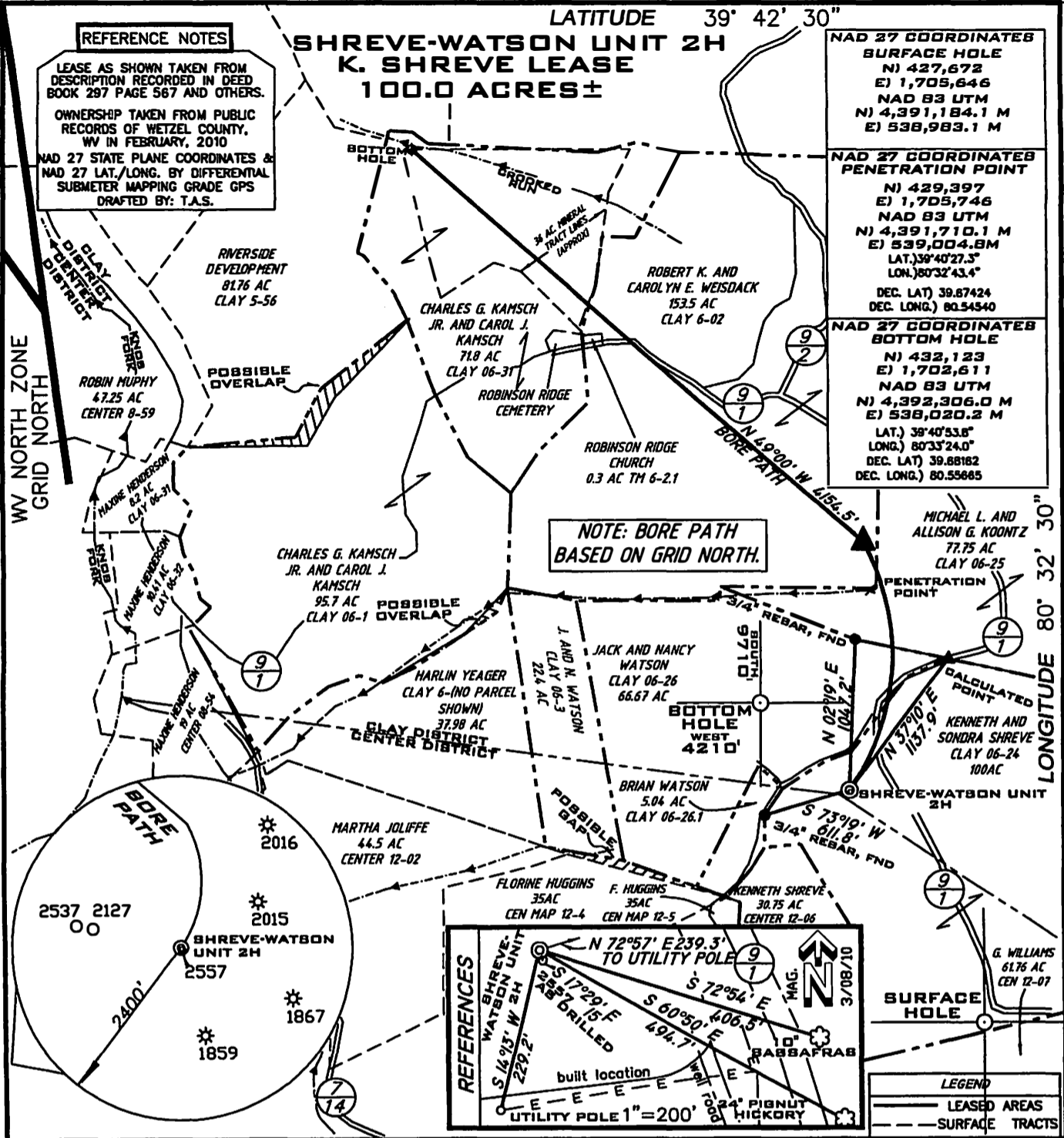
REFERENCE NOTES

LEASE AS SHOWN TAKEN FROM DESCRIPTION RECORDED IN DEED BOOK 297 PAGE 567 AND OTHERS.
OWNERSHIP TAKEN FROM PUBLIC RECORDS OF WETZEL COUNTY, WV IN FEBRUARY, 2010
NAD 27 STATE PLANE COORDINATES & NAD 27 LAT./LONG. BY DIFFERENTIAL SUBMETER MAPPING GRADE GPS
DRAFTED BY: T.A.S.

NAD 27 COORDINATES SURFACE HOLE
N) 427,672
E) 1,705,646
NAD 83 UTM
N) 4,391,184.1 M
E) 538,983.1 M

NAD 27 COORDINATES PENETRATION POINT
N) 429,397
E) 1,705,746
NAD 83 UTM
N) 4,391,710.1 M
E) 539,004.8M
LAT.) 39°40'27.3"
LONG.) 80°32'43.4"
DEC. LAT) 39.67424
DEC. LONG.) 80.54540

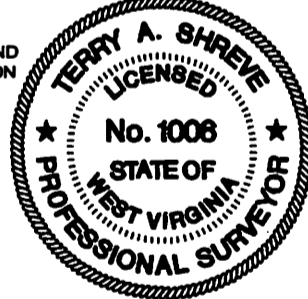
NAD 27 COORDINATES BOTTOM HOLE
N) 432,123
E) 1,702,611
NAD 83 UTM
N) 4,392,306.0 M
E) 538,020.2 M
LAT.) 39°40'53.8"
LONG.) 80°32'24.0"
DEC. LAT) 39.68182
DEC. LONG.) 80.55685



FILE NUMBER G100473(WB9-51)
DRAWING NUMBER G100473WP2H.dwg
SCALE 1" = 1000'
MINIMUM DEGREE OF ACCURACY 1/200
PROVEN SOURCE OF ELEVATION SUBMETER MAPPING GRADE GPS

I THE UNDERSIGNED HEREBY CERTIFY THAT THIS PLAT IS CORRECT TO THE BEST OF MY KNOWLEDGE AND BELIEF AND SHOWS ALL THE INFORMATION REQUIRED BY LAW AND THE REGULATIONS ISSUED AND PRESCRIBED BY THE DEPARTMENT OF ENVIRONMENTAL PROTECTION

P.S. 1006



**STATE OF WEST VIRGINIA
DIVISION OF ENVIRONMENTAL PROTECTION
OFFICE OF OIL AND GAS**

DATE: OCTOBER 26, 2011

OPERATORS WELL NO. SHREVE-WATSON

API WELL NO. 47-103-02755 H

STATE WV COUNTY WETZEL

WELL TYPE: OIL GAS LIQUID INJECTION WASTE DISPOSAL
(IF "GAS") PRODUCTION STORAGE DEEP SHALLOW
LOCATION ELEVATION 1471' WATERSHED KNOB FORK AND LISTON HOLLOW OF SUGAR RUN

DISTRICT CLAY COUNTY WETZEL LEASE NUMBER

QUADRANGLE LITTLETON 7.5' SURFACE OWNER KENNETH AND SONDR A SHREVE ACREAGE 100±

OIL & GAS ROYALTY OWNER KENNETH AND SONDR A SHREVE et al LEASE ACREAGE 100, 77.95, 152.75, 38.0

PROPOSED WORK: DRILL CONVERT DRILL DEEPER REDRILL FRACTURE OR STIMULATE PLUG OFF OLD FORMATION
PERFORATE NEW FORMATION OTHER PHYSICAL CHANGE (SPECIFY)

TARGET FORMATION MARCELLUS ESTIMATED DEPTH 7650' + Horizontal Leg

WELL OPERATOR GRENADIER ENERGY PARTNERS, LLC. DESIGNATED AGENT SHARON BARTH - CT CORPORATION
ADDRESS 1610 WOODSTEAD CT. SUITE 330 THE WOODLANDS, TEXAS 77380 ADDRESS 707 VIRGINIA STREET EAST 15TH FLOOR CHARLESTON, WV 25301

A.R.L.B

SURFACE HOLE SURVEYED LAT. 39° 40' 10.2" DECIMAL LAT. 39.66950