

**REFERENCE NOTES**

LEASE AS SHOWN TAKEN FROM DESCRIPTION RECORDED IN DEED BOOK 297 PAGE 567 AND OTHERS.  
OWNERSHIP TAKEN FROM PUBLIC RECORDS OF WETZEL COUNTY, WV IN FEBRUARY, 2010  
NAD 27 STATE PLANE COORDINATES & NAD 27 LAT./LONG. BY DIFFERENTIAL SUBMETER MAPPING GRADE GPS  
DRAFTED BY: T.A.S.

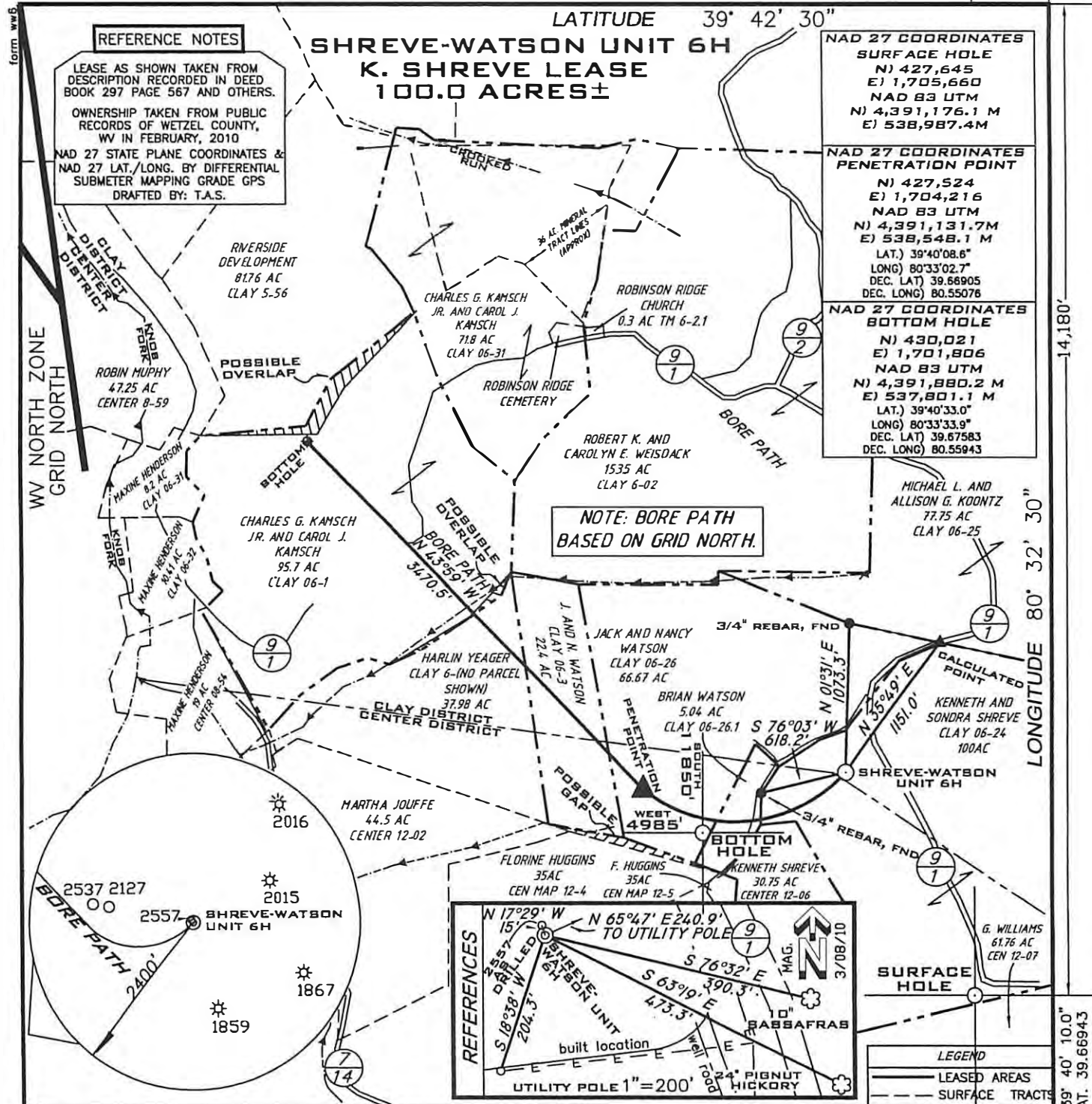
**SHREVE-WATSON UNIT 6H  
K. SHREVE LEASE  
100.0 ACRES±**

NAD 27 COORDINATES  
SURFACE HOLE  
N) 427,645  
E) 1,705,660  
NAD 83 UTM  
N) 4,391,176.1 M  
E) 538,987.4 M

NAD 27 COORDINATES  
PENETRATION POINT  
N) 427,524  
E) 1,704,216  
NAD 83 UTM  
N) 4,391,131.7 M  
E) 538,548.1 M  
LAT.) 39°40'08.6"  
LONG) 80°33'02.7"  
DEC. LAT) 39.66905  
DEC. LONG) 80.55078

NAD 27 COORDINATES  
BOTTOM HOLE  
N) 430,021  
E) 1,701,806  
NAD 83 UTM  
N) 4,391,880.2 M  
E) 537,801.1 M  
LAT.) 39°40'33.0"  
LONG) 80°33'33.9"  
DEC. LAT) 39.67583  
DEC. LONG) 80.55943

NOTE: BORE PATH  
BASED ON GRID NORTH.



FILE NUMBER G100473(WB9-51)  
DRAWING NUMBER G100473WP6H.dwg  
SCALE 1" = 1000'  
MINIMUM DEGREE OF ACCURACY 1/200  
PROVEN SOURCE OF ELEVATION SUBMETER MAPPING GRADE GPS

I THE UNDERSIGNED HEREBY CERTIFY TH T THIS PL T IS CORRECT TO THE BEST OF MY KNOWLEDGE AND BELIEF ND SHOWS LL THE INFOR TION REQUIRED BY LAW AND THE REGUL TIONS ISSUED AND PRESCRIBED BY THE DEPARTMENT OF ENVIRONMENTAL PROTECTION

P.S. 1006  
*Terry A. Shreve*



**STATE OF WEST VIRGINIA  
DIVISION OF ENVIRONMENTAL PROTECTION  
OFFICE OF OIL AND GAS**



DATE: OCTOBER 24, 2011

OPERATORS WELL NO. SHREVE-WATSON UNIT 6H

API WELL NO. 47-103-02756 H

STATE WV

WELL TYPE: OIL \_\_\_ GAS X LIQUID INJECTION \_\_\_ WASTE DISPOSAL \_\_\_  
(IF "GAS") PRODUCTION X STORAGE \_\_\_ DEEP \_\_\_ SHALLOW X

LOCATION ELEVATION 1471' WATERSHED KNOB FORK AND LISTON HOLLOW OF SUGAR RUN

DISTRICT CLAY COUNTY WETZEL

QUADRANGLE LITTLETON 7.5' LEASE NUMBER 100±

SURFACE OWNER KENNETH AND SONDR A SHREVE LEASE ACREAGE 100, 5.04, 66.67, 22.4, 37.15, 95.7

OIL&GAS ROYALTY OWNER KENNETH AND SONDR A SHREVE et al

PROPOSED WORK: DRILL X CONVERT \_\_\_ DRILL DEEPER \_\_\_ REDRILL \_\_\_ FRACTURE OR STIMULATE X PLUG OFF OLD FORMATION \_\_\_  
PERFORATE NEW FORMATION \_\_\_ OT ER PH SICAL CHANGE (SPECIF ) \_\_\_  
PLUG & ABANDON \_\_\_ CLEAN OUT& REPLUG \_\_\_

TARGET FORMATION MARCELLUS ESTIMATED DEPTH 7650' + Horizontal Leg

WELL OPERATOR GRENADIER ENERGY PARTNERS, LLC. DESIGNATED AGENT SHARON BARTH - CT CORPORATION  
ADDRESS 1610 WOODSTEAD CT. SUITE 330 THE WOODLANDS, TEXAS 77380 ADDRESS 707 VIRGINIA STREET EAST 15TH FLOOR CHARLESTON, WV 25301

**CANCELLED**