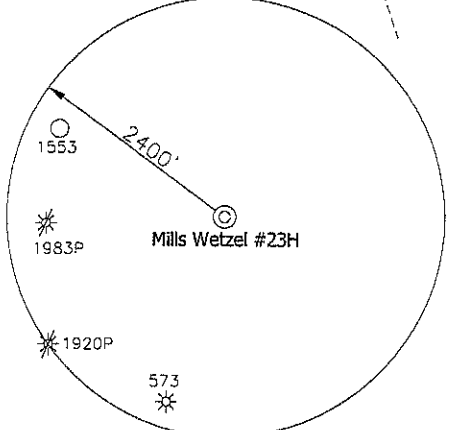
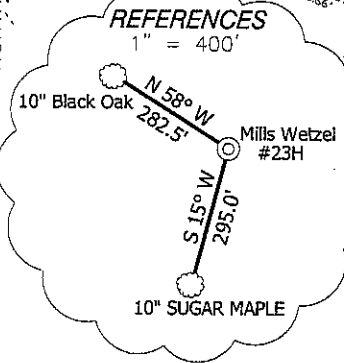


# MILLS WETZEL #23H



MILLS WETZEL #23H  
 BOTTOM HOLE  
 STATE PLANE COORDINATES  
 NORTH ZONE  
 (N) 375486  
 (E) 1663881

MILLS WETZEL #23H  
 LANDING POINT  
 STATE PLANE COORDINATES  
 NORTH ZONE  
 (N) 369910  
 (E) 1667721

MILLS WETZEL #23H  
 LANDING POINT  
 UTM (NAD 83)  
 4373393  
 527722

MILLS WETZEL #23H  
 BOTTOM HOLE  
 UTM (NAD 83)  
 4375072  
 526523

MILLS WETZEL #23H  
 STATE PLANE COORDINATES  
 NORTH ZONE  
 (N) 369976  
 (E) 1668986

MILLS WETZEL #23H  
 L & L DECIMAL  
 39.50987  
 80.67323

MILLS WETZEL #23H  
 UTM (NAD 83)  
 4373420  
 528107

**NOTES ON SURVEY**

TIES TO WELLS AND CORNERS ARE BASED ON STATE PLANE GRID NORTH WV NORTH ZONE NAD '27.

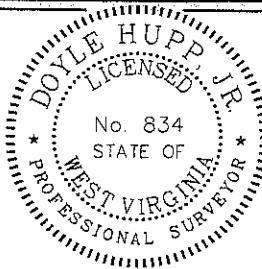
TIES TO REFERENCES ARE BASED ON MAGNETIC NORTH 10-20-11.

LEASE BOUNDARY SHOWN HEREON TAKEN FROM A TITLE EXAMINATION BY PATRICK N. RADCLIFF DATED NOVEMBER 7, 2009 AND INFORMATION PROVIDED BY STONE ENERGY CORPORATION.

SURFACE OWNER AND ADJOINER INFORMATION TAKEN FROM THE ASSESSOR AND COUNTY CLERK RECORDS OF WETZEL COUNTY IN SEPTEMBER, 2011 AND INFORMATION PROVIDED BY STONE ENERGY CORPORATION.

WELL LAT./LONG. ESTABLISHED BY SG-CPS.

I, THE UNDERSIGNED, HEREBY CERTIFY THAT THIS PLAT IS CORRECT TO THE BEST OF MY KNOWLEDGE AND BELIEF AND SHOWS ALL THE INFORMATION REQUIRED BY LAW AND THE REGULATIONS ISSUED AND PRESCRIBED BY THE DIVISION OF ENVIRONMENTAL PROTECTION.



P.S. 834

*Doyle Hupp, Jr.*

HUPP Surveying & Mapping  
 P.O. Box 647 Grantsville, WV 26147  
 (304) 354-7035 EMAIL: hupp@frontiernet.net

(+) DENOTES LOCATION OF WELL ON UNITED STATES TOPOGRAPHIC MAPS.

DATE NOVEMBER 7, 2011

OPERATORS WELL NO. MILLS WETZEL #23H

API WELL NO. 47-103-02764H6A

STATE COUNTY PERMIT

MINIMUM DEGREE OF ACCURACY 1/2500

FILE NO. W1719 (BK51-49)

PROVEN SOURCE OF ELEVATION SG-GPS (OPUS)

SCALE 1" = 1000'

STATE OF WEST VIRGINIA

DIVISION OF ENVIRONMENTAL PROTECTION

OFFICE OF OIL AND GAS

WELL TYPE : OIL \_\_\_ GAS  LIQUID INJECTION \_\_\_ WASTE DISPOSAL \_\_\_ IF "GAS" PRODUCTION  STORAGE \_\_\_ DEEP \_\_\_ SHALLOW

LOCATION : ELEVATION 1335' WATERSHED TRIBUTARY OF PINEY FORK

DISTRICT GREEN COUNTY WETZEL QUADRANGLE PINE GROVE 7.5'

SURFACE OWNER WEST VIRGINIA CONSERVATION COMMISSION ACREAGE 5104.5 ±

ROYALTY OWNER MILLS WETZEL LAND Inc. LEASE ACREAGE 5104.5±

PROPOSED WORK : LEASE NO. \_\_\_\_\_

DRILL  CONVERT \_\_\_ DRILL DEEPER \_\_\_ REDRILL \_\_\_ FRACTURE OR STIMULATE  PLUG OFF OLD FORMATION \_\_\_ PERFORATE NEW FORMATION \_\_\_ PLUG AND ABANDON \_\_\_ CLEAN OUT AND REPLUG \_\_\_ OTHER \_\_\_

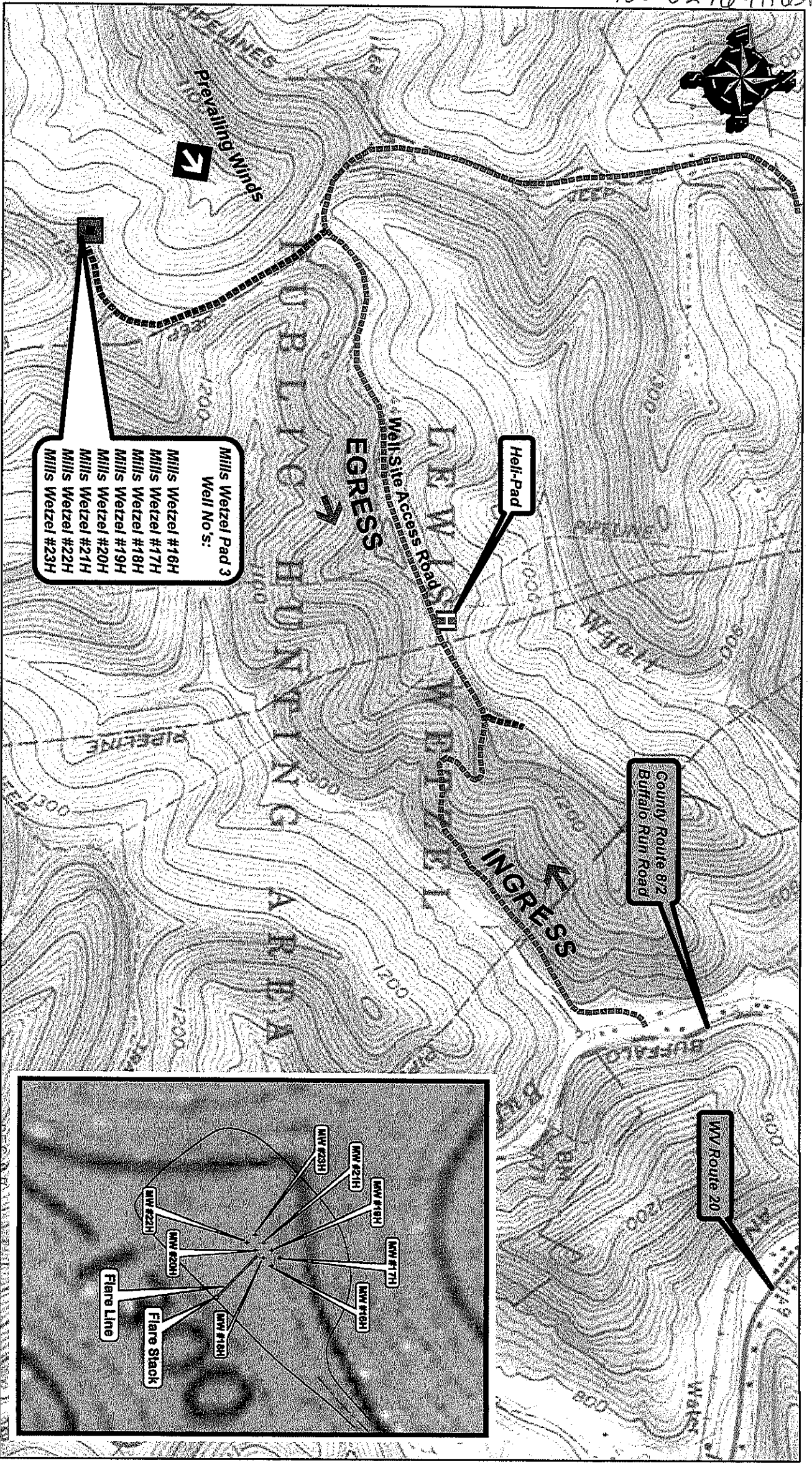
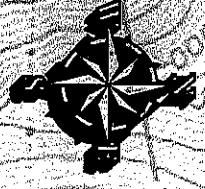
PHYSICAL CHANGE IN WELL (SPECIFY) \_\_\_\_\_ TARGET FORMATION MARCELLUS

ESTIMATED DEPTH 7,370' TVD 15,410' MD

WELL OPERATOR STONE ENERGY CORPORATION DESIGNATED AGENT TIM MCGREGOR

ADDRESS P.O. BOX 52807 LAFAYETTE, LA 70508 ADDRESS 6000 HAMPTON CENTER SUITE B MORGANTOWN WV 26505

COUNTY NAME PERMIT

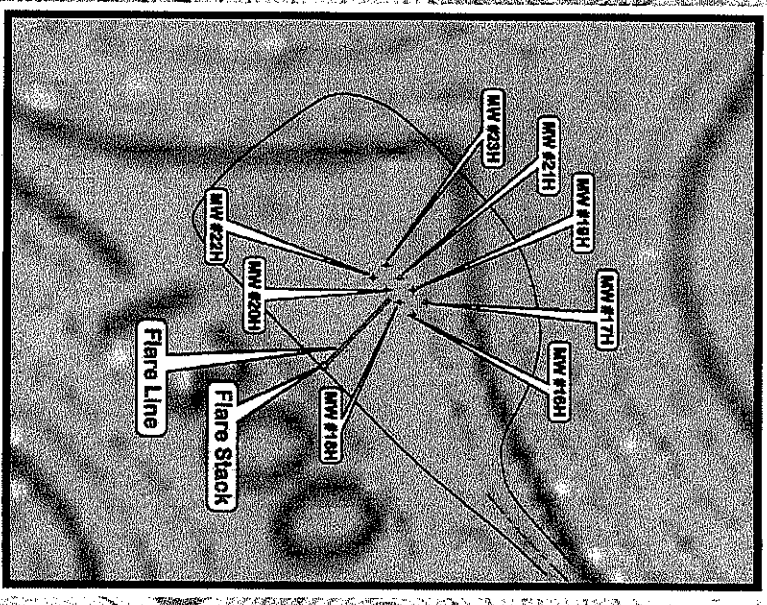


Mills Wetzel Pad 3  
Well No's:

- Mills Wetzel #16H
- Mills Wetzel #17H
- Mills Wetzel #18H
- Mills Wetzel #19H
- Mills Wetzel #20H
- Mills Wetzel #21H
- Mills Wetzel #22H
- Mills Wetzel #23H

County Route 8/2  
Buffalo Run Road

WV Route 20



1 inch = 1,000 feet

Date: 11/14/2011

# STONE ENERGY - MILLS WETZEL PAD "3"

WETZEL COUNTY, WV

