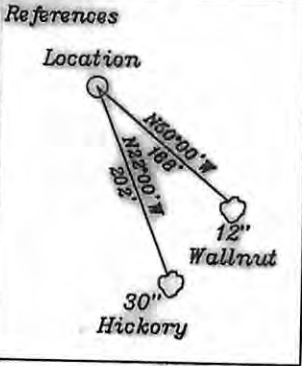


LATITUDE 39-45-00 N

Top Hole 6,266'

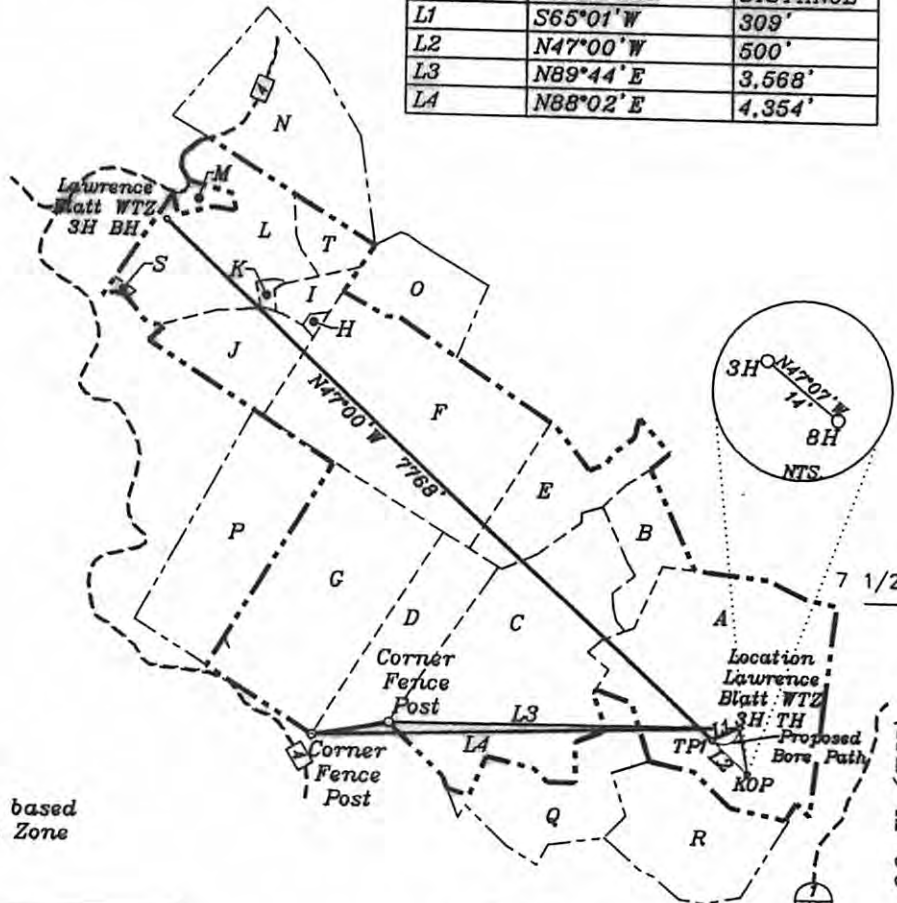
Bottom Hole 513'



NUMBER	DIRECTION	DISTANCE
L1	S65°01'W	309'
L2	N47°00'W	500'
L3	N89°44'E	3,568'
LA	N88°02'E	4,354'

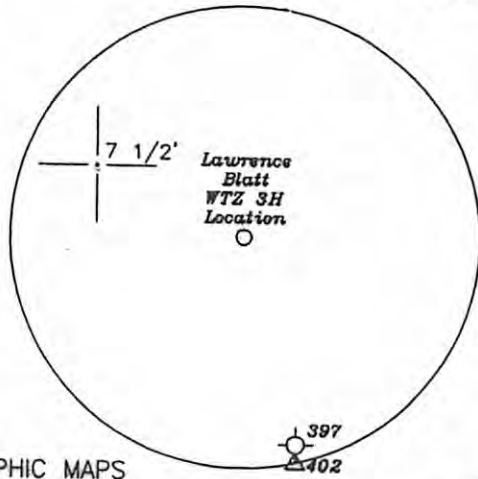
- A- L. Blatt et al 108 Ac. TM.4-05
- B- M. Blair 30 Ac. TM.4-40
- C- L. Blatt et al 106.26 TM.4-4
- D- T. Blatt 16.83 Ac. TM.4-03
- E- P. Fox 25 Ac. TM.21-21
- F- T. Fox 91.21 Ac. TM.22-10
- G- P. Fox 74.75 Ac. TM.4-02
- H- Urbanek 1.0 Ac. TM.20-17.1
- I- Urbanek 5.0 Ac. TM.20-17.2
- J- Miller 24.27 Ac. TM.20-17.4
- K- C. Klug 1.336 Ac. TM.20-17.3
- L- Dennis 158 Ac. TM.20-17
- M- A. Klug 1.5 Ac. TM.20-20
- N- Kernan 49.18 Ac. TM.20-09
- O- Sapp 1.95 Ac. TM.20-16
- P- P. Fox 56 Ac. TM.4-01
- Q- A. Blatt 37 Ac. TM.4-14
- R- A. Blatt 38 Ac. TM.4-15
- S- Miller 1.0 Ac. TM.20-19
- T- Weigand 9.606 Ac. TM.20-17.5

Notes: Ties to wells and corners are based on State Plane Grid North-WV North Zone NAD 27.



Top Hole 12,310' Bottom Hole 7,298'

Top Hole NAD 27-39.715980 N, 80.688371 W UTM NAD 83 meters-4396289.87 N, 526726.66 E State Plane NAD 27-445099.0 N, 1665707.5 E
KOP NAD 27-39.714689 N, 80.688046 W UTM NAD 83 meters-4396146.6 N, 526755.0 E State Plane NAD 27-444627 N, 1665793 E
TP 1 NAD 27-39.715611 N, 80.689362 W UTM NAD 83 meters-4396248.6 N, 526641.9 E State Plane NAD 27-444968 N, 1665427 E
Bottom Hole NAD 27-39.729947 N, 80.709809 W UTM NAD 83 meters-4397833.7 N, 524884.1 E State Plane NAD 27-450266 N, 1659746 E



(+) DENOTES LOCATION OF WELL ON UNITED STATES TOPOGRAPHIC MAPS

FILE NO. _____
 DRAWING NO. 1
 SCALE 1" = 2000'
 MINIMUM DEGREE OF ACCURACY 1 in 200
 PROVEN SOURCE OF ELEVATION GPS
submeter unit

I THE UNDERSIGNED, HEREBY CERTIFY THAT THIS PLAT IS CORRECT TO THE BEST OF MY KNOWLEDGE AND BELIEF AND SHOWS ALL THE INFORMATION REQUIRED BY LAW AND THE REGULATIONS ISSUED AND PRESCRIBED BY THE DEPARTMENT OF ENERGY.
 (SIGNED) David L Jackson
 R.P.E. _____ L.L.S. 708



STATE OF WEST VIRGINIA
 Division of Environmental Protection
 OFFICE OF OIL AND GAS

DATE February 7, 2012
 OPERATOR'S WELL NO. Lawrence Blatt WTZ 3H
 API WELL NO. _____

WELL TYPE: OIL GAS LIQUID INJECTION X WASTE DISPOSAL _____
 (IF "GAS") PRODUCTION X STORAGE _____ DEEP _____ SHALLOW X
 STATE 47 COUNTY 103 PERMIT 2768 H6A

LOCATION: ELEVATION 1,282.47' WATER SHED Blake Fork
 DISTRICT Proctor COUNTY Wetzel
 QUADRANGLE Wileyville 7 1/2'

SURFACE OWNER Lawrence E. Blatt et al ACREAGE 108 ac.
 OIL & GAS ROYALTY OWNER Lawrence E. Blatt et al LEASE ACREAGE 514.076 ac
 LEASE NO. 1-288006-000 (TM. 20-17, 20-17.3), 1-282020-000 (TM.20-17.4), 1-254806-000 (TM.22-10)
1-254837-000 (TM.21-21), 1-254905-000 (TM.4-04), 1-254825-000 (TM.4-05)

PROPOSED WORK: DRILL X CONVERT _____ DRILL DEEPER _____ REDRILL _____ FRACTURE OR
 STIMULATE _____ PLUG OFF OLD FORMATION _____ PERFORATE NEW
 FORMATION X OTHER PHYSICAL CHANGE IN WELL (SPECIFY) _____

PLUG AND ABANDON _____ CLEAN OUT AND REPLUG _____
 TARGET FORMATION Marcellus ESTIMATED DEPTH 14000'
6965' + Horizontal leg (TMD 14690')
 WELL OPERATOR Chesapeake Appalachia, L.L.C. DESIGNATED AGENT Eric B. Gillespie
 ADDRESS P.O. Box 18496 Oklahoma City, OK 73154-0496 ADDRESS P.O. Box 6070 Charleston, WV 25362