

Longitude = 80° 38' 25.8"

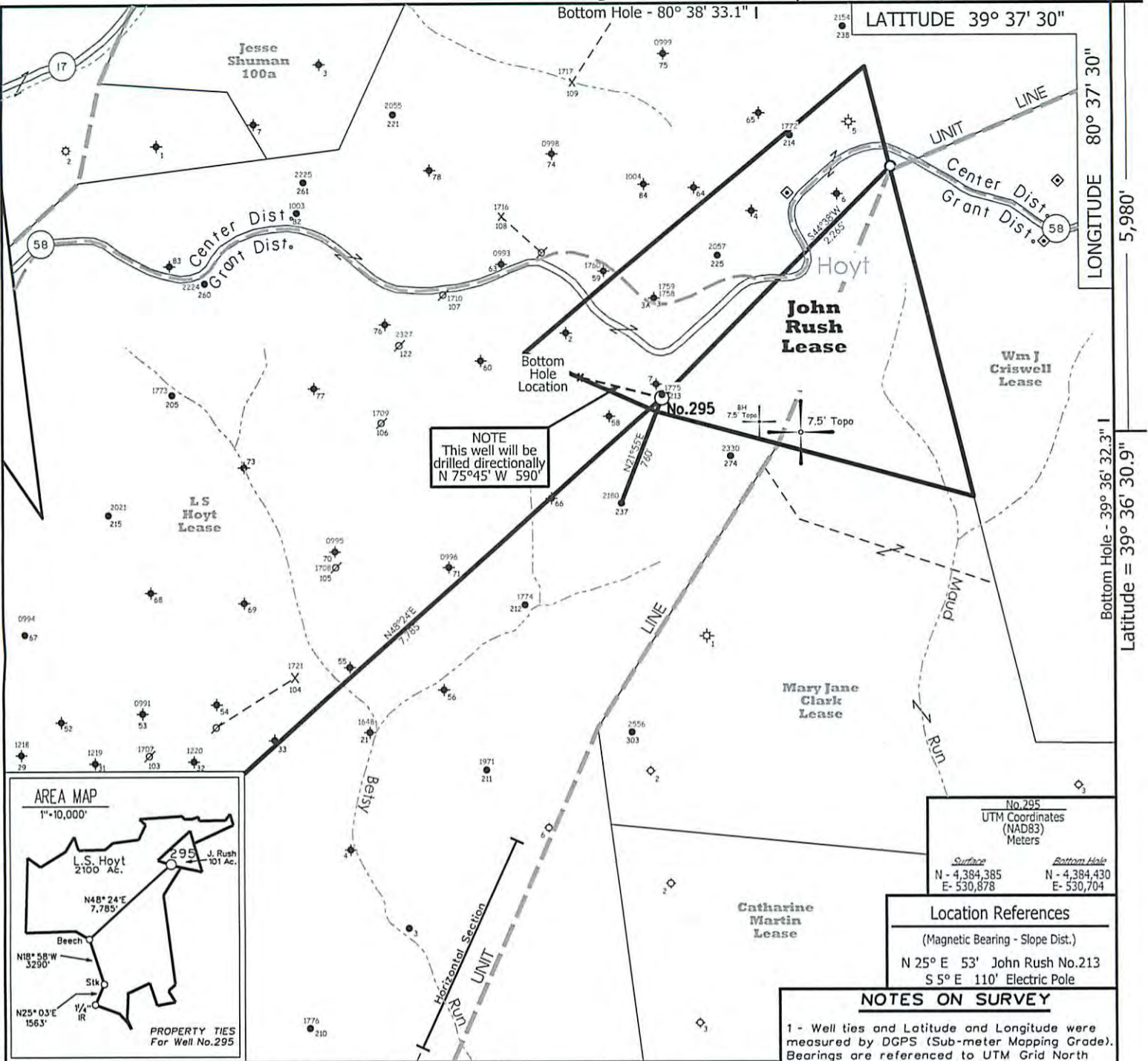
4,365'

103 02845

LATITUDE 39° 37' 30"

LONGITUDE 80° 37' 30"

Bottom Hole - 39° 36' 32.3" I  
Latitude = 39° 36' 30.9"

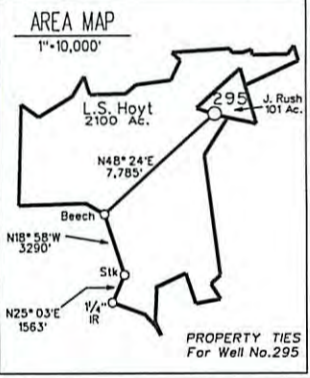


NOTE  
This well will be drilled directionally N 75°45' W 590'

No. 295  
UTM Coordinates (NAD83) Meters  
Surface N - 4,384,385 E - 530,878  
Bottom Hole N - 4,384,430 E - 530,704

Location References  
(Magnetic Bearing - Slope Dist.)  
N 25° E 53' John Rush No. 213  
S 5° E 110' Electric Pole

**NOTES ON SURVEY**  
1 - Well ties and Latitude and Longitude were measured by DGPS (Sub-meter Mapping Grade). Bearings are referenced to UTM Grid North (Zone 17 North - NAD 1927).  
2 - Surface owners and adjoiners information obtained from the Wetzel County Assessor's tax records.

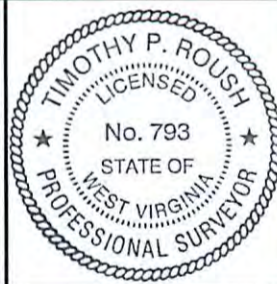


◆ - DENOTES A POSSIBLE WATER SUPPLY SOURCE LOCATED FROM CIRCA 2003 AERIAL PHOTOGRAPHY - NOT BY SURVEY. OTHER SOURCES MAY BE PRESENT.  
+ - DENOTES LOCATION OF WELL ON UNITED STATES TOPOGRAPHIC MAPS.

NO KNOWN WATER SUPPLY SOURCES ARE LOCATED WITHIN 1000' OF PROPOSED WELL

FILE NO. 1046-66  
MAP NO. N S E W  
SCALE 1" = 1000'  
MINIMUM DEGREE OF ACCURACY Sub-Meter  
PROVEN SOURCE OF ELEVATION DGPS Survey  
(Sub-Meter Mapping Grade)

I THE UNDERSIGNED, HEREBY CERTIFY THAT THIS PLAT IS CORRECT TO THE BEST OF MY KNOWLEDGE AND BELIEF AND SHOWS ALL THE INFORMATION REQUIRED BY LAW AND THE REGULATIONS ISSUED AND PRESCRIBED BY THE DEPARTMENT OF MINES.  
(SIGNED) Timothy P. Roush  
TIMOTHY P. ROUSH PS 793



WEST VIRGINIA  
Division of Environmental Protection  
Office of Oil and Gas  
601 57th Street  
Charleston, West Virginia 25301



DATE September 25, 2012  
FARM John Rush No. 295  
API WELL NO. 47-103-02845

**CANCELLED**

WELL TYPE: OIL  GAS  LIQUID INJECTION  WASTE DISPOSAL   
(IF "GAS") PRODUCTION  STORAGE  DEEP  SHALLOW   
LOCATION: ELEVATION 1,408' WATERSHED Betsy Run  
DISTRICT Grant COUNTY Wetzel  
QUADRANGLE Pine Grove 7.5'

SURFACE OWNER Dallison Lumber Inc. ACREAGE 98.45 Ac.  
OIL & GAS ROYALTY OWNER HG Energy, LLC., et al LEASE ACREAGE 101 Ac.  
LEASE NO. 99324-00

PROPOSED WORK: DRILL  CONVERT  DRILL DEEPER  REDRILL  FRACTURE OR STIMULATE  PLUG OFF OLD FORMATION  PERFORATE NEW FORMATION  OTHER PHYSICAL CHANGE IN WELL (SPECIFY) Well will be drilled directionally N 75°45' W 590'

PLUG AND ABANDON  CLEAN OUT AND REPLUG   
TARGET FORMATION Gordon ESTIMATED DEPTH 3,500' TVD

WELL OPERATOR HG Energy LLC. DESIGNATED AGENT Mike Kirsch  
ADDRESS 5260 DuPont Road Parkersburg, WV 26101 ADDRESS 5260 DuPont Road Parkersburg, WV 26101

04/10/2015

FORM IV-6

RECEIVED  
OCT 30 2012

Environmental Protection