



---

west virginia department of environmental protection

---

Office of Oil and Gas  
601 57th Street SE  
Charleston, WV 25304  
(304) 926-0450  
(304) 926-0452 fax

Earl Ray Tomblin, Governor  
Randy C. Huffman, Cabinet Secretary  
www.dep.wv.gov

## PERMIT MODIFICATION APPROVAL

January 27, 2016

EQT PRODUCTION COMPANY  
120 PROFESSIONAL PLACE  
BRIDGEPORT, WV 26330

Re: Permit Modification Approval for API Number 10303034, Well #: 515112

**Changed Target Formation, Extend Lateral, Sub-surface Easement**

Oil and Gas Operator:

The Office of Oil and Gas has reviewed the attached permit modification for the above referenced permit. The attached modification has been approved and well work may begin. Please be reminded that the oil and gas inspector is to be notified twenty-four (24) hours before permitted well work is commenced.

Please call James Martin at 304-926-0499, extension 1654 if you have any questions.

Sincerely,

For

Gene Smith  
Assistant Chief of Permitting  
Office of Oil and Gas

Promoting a healthy environment.

01/29/2016



January 26, 2016

Mr. Gene Smith  
West Virginia Department of Environmental Protection  
Office of Oil and Gas  
601 57th Street SE  
Charleston, WV 25304

Re: Modification of 47-103-03034

Dear Mr. Smith,

Enclosed is an updated WW-6B, schematics, WW-6A1, rec plan, Site Safety plan and mylar plat. EQT would like to revise the length of the lateral and the formation from Genesee to Marcellus. The top hole has not changed.

If you have any questions, please do not hesitate to contact me at (304) 848-0076.

Sincerely,

A handwritten signature in blue ink, appearing to read 'Vicki R'.

Vicki Roark  
Permitting Supervisor-WV

Enc.

4701030334 MOD

**STATE OF WEST VIRGINIA**  
**DEPARTMENT OF ENVIRONMENTAL PROTECTION, OFFICE OF OIL AND GAS**  
**WELL WORK PERMIT APPLICATION**

1) Well Operator: EQT Production Company  
Operator ID 306686 County 103 District 4 Quadrangle 254

2) Operator's Well Number: 515112 Well Pad Name BIG360

3) Farm Name/Surface Owner : Coastal Forest Resources Public Road Access: Rt 76

4) Elevation, current ground: 1,008.0 Elevation, proposed post-construction: 998.0

5) Well Type: (a) Gas  Oil  Underground Storage   
Other \_\_\_\_\_

(b) If Gas: Shallow  Deep   
Horizontal

6) Existing Pad? Yes or No: No

*DMH*  
*12-10-15*

7) Proposed Target Formation(s), Depth(s), Anticipated Thicknesses and Associated Pressure(s):  
Target formation is Marcellus at a depth of 7087 with the anticipated thickness to be 51 feet and anticipated target pressure of 2620 PSI  
Top of Marcellus: 7064

8) Proposed Total Vertical Depth: 7087

9) Formation at Total Vertical Depth: Marcellus

10) Proposed Total Measured Depth: 13355

11) Proposed Horizontal Leg Length: 5251

12) Approximate Fresh Water Strata Depths: No shows found in completion reports within 4000'

13) Method to Determine Fresh Water Depth: By offset wells

14) Approximate Saltwater Depths: 1,961

15) Approximate Coal Seam Depths: 269, 429, 650, 752

16) Approximate Depth to Possible Void (coal mine, karst, other): None reported

17) Does proposed well location contain coal seams directly overlying or adjacent to an active mine?  
Yes  No

(a) If Yes, provide Mine Info:  
Name: \_\_\_\_\_  
Depth: \_\_\_\_\_  
Seam: \_\_\_\_\_  
Owner: \_\_\_\_\_

4701070334 *MOD* RECEIVED  
Office of Oil and Gas  
DEC 14 2015

WV - 6B  
(4/15)

API NO. 47 - 103 - 03034  
 OPERATOR WELL NO. 515112  
 Well Pad Name: BIG360

**CASING AND TUBING PROGRAM**

18)

TYPE	Size (in)	New or Used	Grade	Weight per ft. (lb/ft)	FOOTAGE: for Drilling	INTERVALS: Left in Well	CEMENT: Fill-up (Cu.Ft.)
Conductor	20	New	A-500	78.6	40	40	60 C.T.S.
Fresh Water	13 3/8	New	J-55	54.5	856	856	790 C.T.S.
Coal	-	-	-	-	-	-	
Intermediate	9 5/8	New	A-500	40	2,480	2,480	971 C.T.S.
Production	5 1/2	New	P-110	20	13,355	13,355	See Note 1
Tubing	2 3/8		J-55	4.6			May not be run, if run will be set 100' less than TD
Liners							

*DMB 12-10-15*

TYPE	Size (in)	Wellbore Diameter (in)	Wall Thickness (in)	Burst Pressure (psi)	Anticipated Max. Internal Pressure (psi)	Cement Type	Cement Yield (cu. ft./k)
Conductor	20	26	0.375	-	18	Construction	1.18
Fresh Water	13 3/8	17 1/2	0.38	2,730	2,184	* See Note 2	1.19
Coal							
Intermediate	9 5/8	12 3/8	0.395	3,950	3,160	* See Note 2	1.19
Production	5 1/2	8 1/2	0.361	12,640	10,112	-	1.07/1.86
Tubing							
Liners							

**Packers**

Kind:	N/A			
Sizes:	N/A			
Depths Set:	N/A			

**Note 1:** EQT plans to bring the TOC on the production casing cement job 500' above the top producing zone.

**Note 2:** Reference Variance 2014-17. (Attached)

*4701030334 MOP*

RECEIVED  
Office of Oil and Gas

DEC 14 2015

WV Department of  
Environmental Protection

01/29/2016

19) Describe proposed well work, including the drilling and plugging back of any pilot hole:

Drill and complete a new horizontal well in the Marcellus formation.

Drill the vertical to an approximate depth of 4496'.

Kick off and drill curve. Drill lateral in the Marcellus. Cement casing.

20) Describe fracturing/stimulating methods in detail, including anticipated max pressure and max rate:

Hydraulic fracturing is completed in accordance with state regulations using water recycled from previously fractured wells and obtained from freshwater sources. This water is mixed with sand and a small percentage (less than 0.3%) of chemicals (including 15% Hydrochloric acid, gelling agent, gel breaker, friction reducer, biocide, and scale inhibitor), referred to in the industry as a "slickwater" completion. Maximum anticipated internal casing pressure is expected to average approximately 8500 psi, maximum anticipated treating rates are expected to average approximately 100 bpm. Stage lengths vary from 150 to 300 feet. Average approximately 200,000 barrels of water per stage. Sand sizes vary from 100 mesh to 20/40 mesh. Average approximately 200,000 pounds of sand per stage.

21) Total area to be disturbed, including roads, stockpile area, pits, etc, (acres): ± 16.03

22) Area to be disturbed for well pad only, less access road (acres): ± 5.02

23) Describe centralizer placement for each casing string.

- Surface: Bow spring centralizers – One at the shoe and one spaced every 500'.
- Intermediate: Bow spring centralizers– One cent at the shoe and one spaced every 500'.
- Production: One spaced every joint from production casing shoe to KOP

24) Describe all cement additives associated with each cement type. **Surface (Type 1 Cement):** 0-3% Calcium Chloride

Used to speed the setting of cement slurries.

0.25% flake. Loss Circulation Material (LCM) is used to combat the loss of the cement slurry to a thief zone.

**Intermediate (Type 1 Cement):** 0-3% Calcium Chloride. Salt is used in shallow, low temperature formations to speed the setting of cement slurries. 0.25% flake. Loss Circulation Material (LCM) is used to combat the loss of whole drilling fluid or cement slurry (not filtrate) to a thief zone.

Production:

**Lead (Type H Cement):** 0.2% CD-20 (dispersant makes cement easier to mix). .15% SuperFL-300 (fluid loss/lengthens thickening time)

.15% SEC-10 (fluid loss) 50:50 POZ (extender)

**Tail (Type H Cement):** 0.2% Super CR-1 (Retarder). Lengthens thickening time. .3% Super FL-200 (fluid loss)

.2% SEC-10 (Fluid loss). .2% SuperFL-350 (fluid loss) Reduces amount of water lost to formation.

60 % Calcuim Carbonate. Acid solubility.

*DMH 4701030334 MOD  
12-18-15*

25) Proposed borehole conditioning procedures. **Surface:** Circulate hole clean (Approximately 30-45 minutes) rotating & reciprocating

one full joint until cuttings diminish at surface. When cuttings returning to surface diminish, continue to circulate an additional 5

minutes. A constant rate of higher than expected cuttings volume likely indicates washouts that will not clean up.

**Intermediate:** Circulate hole clean (Approximately 30-45 minutes) rotating & reciprocating one full joint until cuttings diminish at

surface. When cuttings returning to surface diminish, continue to circulate an additional 5 minutes. If foam drilling, to enhance

hole cleaning use a soap sweep or increase injection rate & foam concentration.

**Production:** Pump marker sweep with nut plug to determine actual hole washout. Calculate a gauge holes bottoms up volume

Perform a cleanup cycle by pumping 3-5 bottoms up or until the shakers are clean. Check volume of cuttings coming across

the shakers every 15 minutes.

RECEIVED

Office of Oil and Gas

DEC 14 2015

\*Note: Attach additional sheets as needed.

WV Department of  
Environmental Protection

47 1 0 3 0 3 0 3 4



west virginia department of environmental protection

Office of Oil and Gas  
601 57<sup>th</sup> Street, SE  
Charleston, WV 25304  
(304) 926-0460  
(304) 926-0452 fax

Earl Ray Tomblin, Governor  
Randy C. Huffman, Cabinet Secretary  
dep.wv.gov

March 18, 2014

Nabors Completion & Production Services Company  
1380 Route 286 Hwy E #121  
Indiana PA 15701

Re: Cement Variance Request

Dear Sir or Madam,

This agency is approving a variance request for the cement blend listed below to be used on surface and coal protection strings for the drilling of oil and gas wells in the state of West Virginia. The variance cannot be used without requesting its use on a permit application and approval by this agency:

- Type 1 (2% Calcium Chloride-Accelerator, 0.25% Super Flake-Lost Circulation, 5.2% Water, 94% Type "I" Cement)

If you have any questions regarding this matter feel free to contact me at 304-926-0499, ext. 1653.

Sincerely,

James Peterson  
Environmental Resources Specialist / Permitting

47 0 1 0 2 0 3 3 4 MOP

Promoting a healthy environment.

RECEIVED  
Office of Oil and Gas

DEC 14 2015

WV Department of  
Environmental Protection

01/29/2016



west virginia department of environmental protection

Office of Oil and Gas  
601 57<sup>th</sup> Street, SE  
Charleston, WV 25304  
(304) 926-0450  
(304) 926-0452 fax

Earl Ray Tomblin, Governor  
Randy C. Huffinan, Cabinet Secretary  
dep.wv.gov

**BEFORE THE OFFICE OF OIL AND GAS  
DEPARTMENT OF ENVIRONMENTAL PROTECTION  
STATE OF WEST VIRGINIA**

**IN THE MATTER OF A VARIANCE FROM )  
REGULATION 35 CSR § 4-11.4/11.5/14.1 )  
AND 35 CSR § 8-9.2.h. 4/5/6/8 OF THE )  
THE OPERATIONAL )  
REGULATIONS OF CEMENTING OIL )  
AND GAS WELLS )**

**ORDER NO. 2014 - 17**

**REPORT OF THE OFFICE**

Nabors Completion & Production Services Co. requests approval of a different cement blend for use in cementing surface and coal protection casing of oil and gas wells.

**FINDINGS OF FACT**

1.) Nabors Completion & Production Services Co. proposes the following cement blend:

- 2% Calcium Chloride (Accelerator)
- 0.25 % Super Flake (Lost Circulation)
- 94% Type "1" Cement
- 5.20 % Water

2.) Laboratory testing results indicate that the blend listed in Fact No.1 will achieve a 500 psi compressive strength within 6 hours and a 2,435 psi compressive strength within 24 hours.

4701030334 MOD

Promoting a healthy environment.

**RECEIVED  
Office of Oil and Gas**

**DEC 14 2015**

**WV Department of  
Environmental Protection**

4710303034

**CONCLUSIONS OF LAW**

Pursuant to Articles 6 and 6A, Chapter 22 of the Code of West Virginia, the Office of Oil and Gas has jurisdiction over the subject matter embraced in said notice, and the persons interested therein, and jurisdiction to promulgate the hereinafter prescribed Order.

Pursuant to 35 CSR § 4-11.5 and 35 CSR § 8-9.2.h.8 the Chief of the Office of Oil and Gas may approve different cement blends upon the well operator providing satisfactory proof that different cement types are adequate.

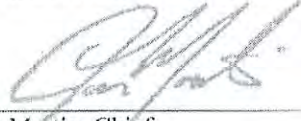
**ORDER**

It is ordered that Nabors Completion & Production Services Co. may use the cement blend listed in Findings of Fact No. 1 for the cementing of surface and coal protection casing of oil and gas wells in the State as may be requested by oil and gas operators. The waiting time on the cement blend shall be 8 hours. The cement blend shall be mixed in strict accordance with the specifications for each blend and weight measurements made on-site to assure the cement slurries meet the minimum weight specifications. A sample shall be collected and, if after 8 hours the cement is not set up, additional time will be required. Nabors Completion & Production Services Co. shall keep a record of cement blend jobs in which the cement blend approved under this order is to be used and made available to the Office of Oil and Gas upon request.

Dated this, the 18th day of March, 2014.

IN THE NAME OF THE STATE OF WEST VIRGINIA

OFFICE OF OIL AND GAS  
DEPARTMENT OF ENVIRONMENTAL PROTECTION  
OF THE STATE OF WEST VIRGINIA



James Martin, Chief  
Office of Oil and Gas

4701030334 MOP

RECEIVED  
Office of Oil and Gas

DEC 14 2015

WV Department of  
Environmental Protection

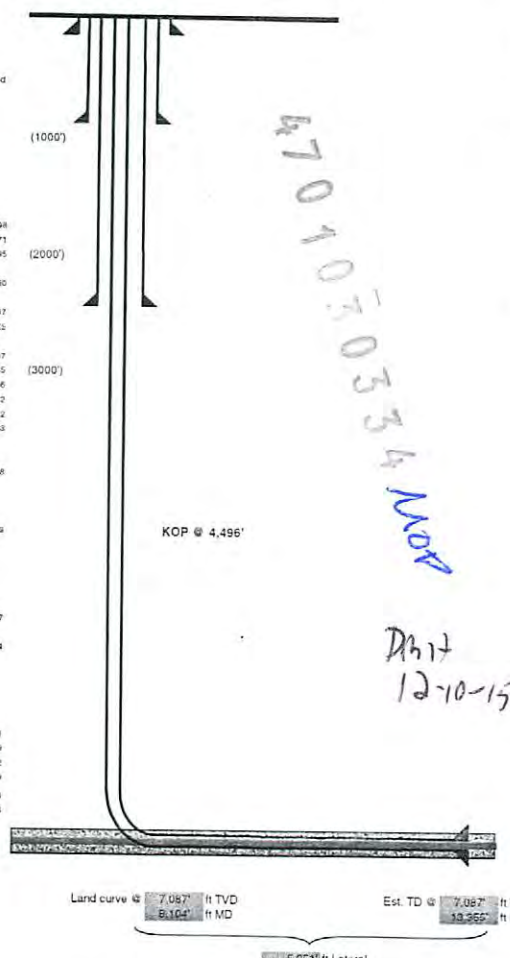
01/29/2016



Well 515112 (BIG360H5)  
 EOT Production  
 Big Run  
 Wetzel West Virginia

Pad Name  
 Azimuth 346.5  
 Vertical Section 5188

TVD Depth (feet)	Formation	Tops (TVD)
0'		
250'		
500'	Base Fresh Water	None reported
750'		
1,000'		
1,250'		
1,500'		
1,750'	Maxion	1781 - 1798
2,000'	Dig Lime	1932 - 2073
	Big Injun	2084 - 2195
2,250'	Wair	2361 - 2430
	Int. csg pt	2480
2,500'	Gantz	2312 - 2517
	Fifty foot	2617 - 2842
2,750'	Base Red Rock	2721
	Thirty foot	2773 - 2787
3,000'	Gordon	2789 - 2935
	Fourth Sand	2875 - 2886
3,250'	Bayard	3007 - 3032
	Warren	3455 - 3512
3,500'	Spewchley	3608 - 3643
3,750'		
4,000'	Baltown A	3962 - 4328
4,250'		
4,500'	Riley	4400 - 4428
4,750'		
5,000'	Benson	5105 - 5157
5,250'	Alexander	5445 - 5484
5,500'		
5,750'		
6,000'		
6,250'	Sonyea	6650 - 6801
	Middlesex	6801 - 6849
6,500'	Genesee	6849 - 6932
	Genesee	6932 - 6960
6,750'	Tully	6960 - 6984
	Hamilton	6984 - 7064
	Marcellus Top	7064
7,000'	Target Inside Marcellus	7087
	Marcellus Bottom	7112



Hole Size (inches)	Type	Size (inches)	Wt (ppf)	Grade	Casing Wall Thickness	Depth (feet)	Top of Cement	Method
26	Conductor	20	78.6	A-500	0.312	40	Surface	Displacement
17 1/2	Surface	13 3/8	54.5	J-55	0.38	856	Surface	Displacement
12 3/8	Intermediate	9 5/8	40	A-500	0.395	2480	Surface	Displacement
8 1/2	Production Casing	5 1/2	20	P-110	0.361	13355	500' above top Producing Zone	Displacement

Land curve @ 7.087' ft TVD  
 8.104' ft MD  
 Est. TD @ 7.087' ft TVD  
 19.265' ft MD  
 5,851' ft Lateral

RECEIVED  
 Office of Oil and Gas  
 DEC 14 2015

WV Department of  
 Environmental Protection

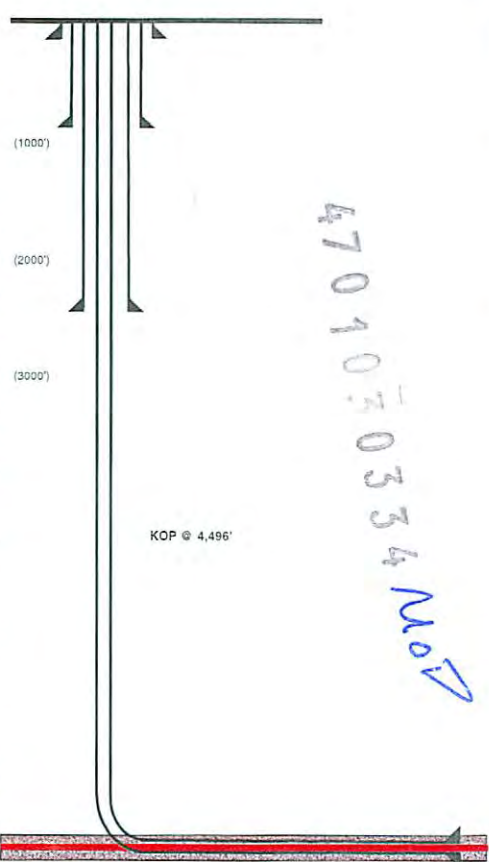
Proposed Well 515112 (BIG360H5) is a horizontal well in the Marcellus formation and completion is estimated to be approximately 4,450' deep. Drill the vertical well to an approximate depth of 4,450' and complete the well with a lateral in the Marcellus. Cement casing.

47010303034

Well 515112 (BIG360H5)  
 EQT Production  
 Big Run  
 Wetzel West Virginia

Pad Name  
 Azimuth 346.5  
 Vertical Section 8164

TVD Depth (feet)	Formation Tops (TVD)	Hole Size (inches)	Type	Size (inches)	Wt (ppf)	Grade	Casing Wall Thickness	Depth (feet)	Top of Cement	Method
250'		26	Conductor	20	78.6	A-500	0.312	40	Surface	Displacement
500'	Base Fresh Water									
750'										
1,000'		17 1/2	Surface	13 3/8	54.5	J-55	0.38	856	Surface	Displacement
1,250'										
1,500'										
1,750'	Maxton 1781 - 1798									
1,800'	Big Lime 1932 - 2071									
2,000'	Big Injun 2094 - 2195									
2,250'	Weir 2361 - 2430									
2,500'	Int. casg pt 2430									
2,500'	Gantz 2512 - 2547									
2,500'	Fifty foot 2617 - 2645									
2,750'	Base Red Rock 2721									
2,750'	Thirty foot 2773 - 2787									
3,000'	Gordon 2788 - 2835									
3,000'	Fourth Sand 2875 - 2888									
3,250'	Bayard 3007 - 3032									
3,250'	Warren 3452 - 3512									
3,500'	Speechley 3609 - 3643									
3,750'										
4,000'	Dalltown A 3962 - 4328									
4,250'										
4,500'	Riley 4450 - 4489									
4,750'										
5,000'										
5,250'	Benson 5155 - 5157									
5,500'	Alexander 5445 - 5484									
5,750'										
6,000'										
6,250'	Sonyea 6050 - 6201									
6,250'	Middlesex 6201 - 6249									
6,500'	Genesee 6240 - 6332									
6,500'	Genesee 6932 - 6960									
6,750'	Tully 6960 - 6984									
6,750'	Hamilton 6924 - 7064									
7,000'	Marcellus top 7064									
7,000'	Target Inside Marcellus 7087	8 1/2	Production Casing	5 1/2	20	P-110	0.361	13355	500' above top Producing Zone	Displacement
7,250'	Marcellus Bottom 7115									

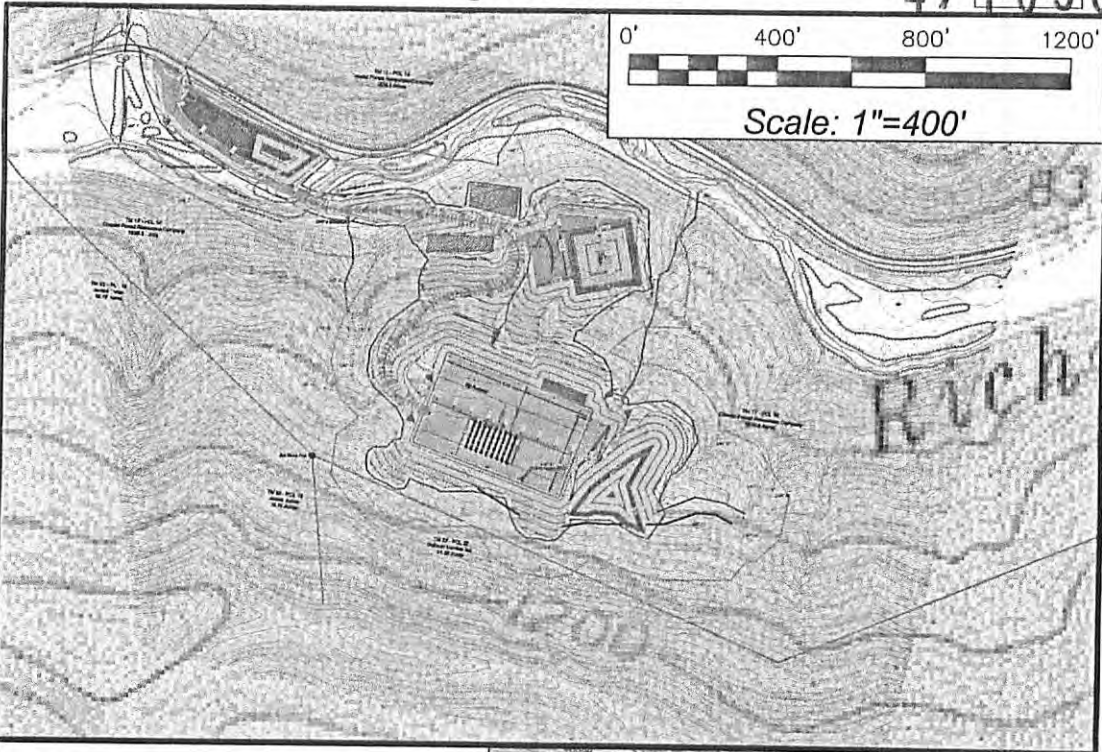


Land curve @ 7.087' ft TVD / 8.104' ft MD  
 Est. TD @ 7.087' ft TVD / 13.355' ft MD  
 5251' ft Lateral

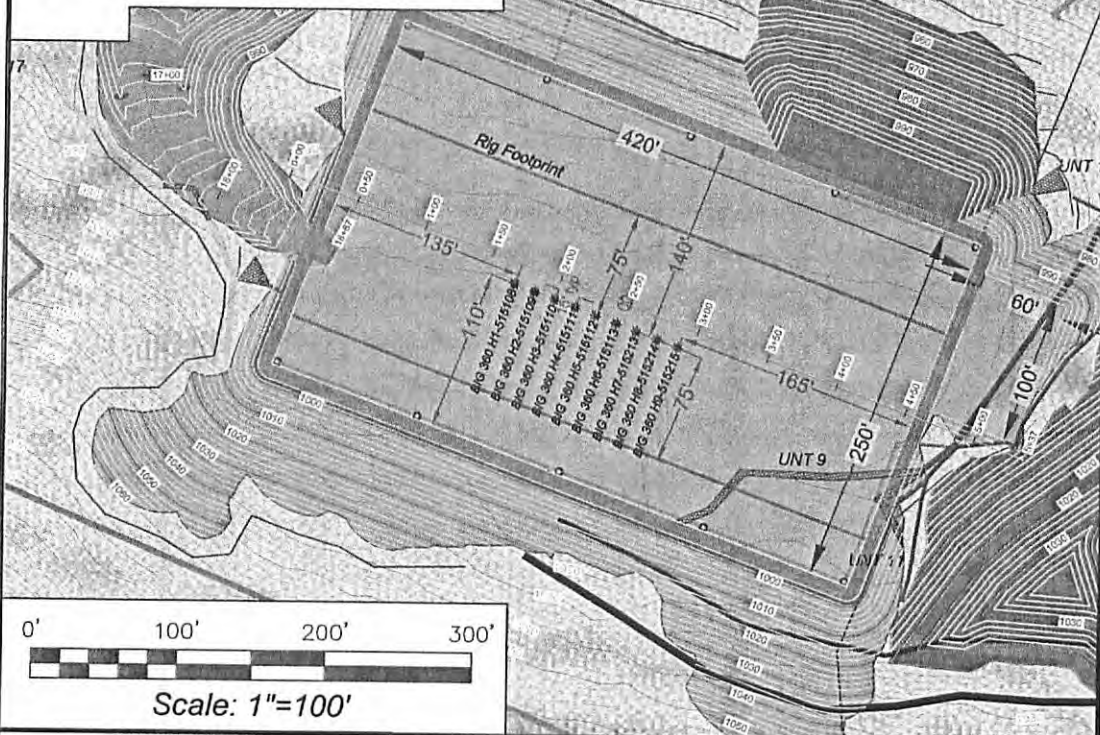
Proposed Well Work  
 Drill and complete a new horizontal well in the Marcellus formation.  
 Drill the vertical to an approximate depth of 4496'.  
 Kick off and drill horizontally in the Marcellus. Cement casing.

WV Department of Environmental Protection  
 RECEIVED  
 Office of Oil and Gas  
 DEC 14 2015

4710303034



Detail sketch for Big 360 Well Pad



SECTION OF THE Big Run 7.5' USGS QUADRANGLE		Proposed Disturbance Area	
Projected culvert inventory (for bid purposes only)		Well Site Location	See Site Plan
15" minimum diameter culverts	See Site Plan	Proposed Access Road	See Site Plan
24" minimum diameter culverts	See Site Plan	Approximate Total Disturbance	See Site Plan
DRAWN BY: Dale Tomlin	DATE: July 31, 2014	FILE NO. 17413	DRAWING FILE NO. 17413 Rec Plan

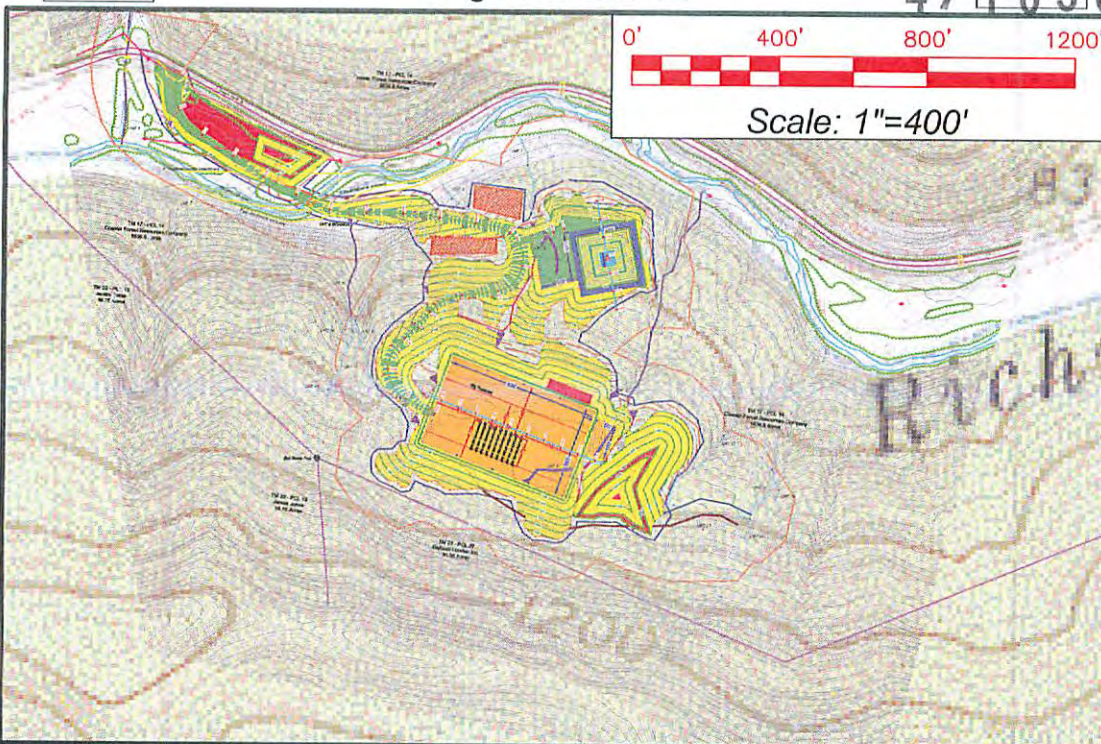
Note: SEE SITE PLAN OF BIG 360 FOR COMPLETE GRADING & DRAINAGE CONSTRUCTION INCLUDING EROSION & SEDIMENT CONTROL DETAILS, ETC.



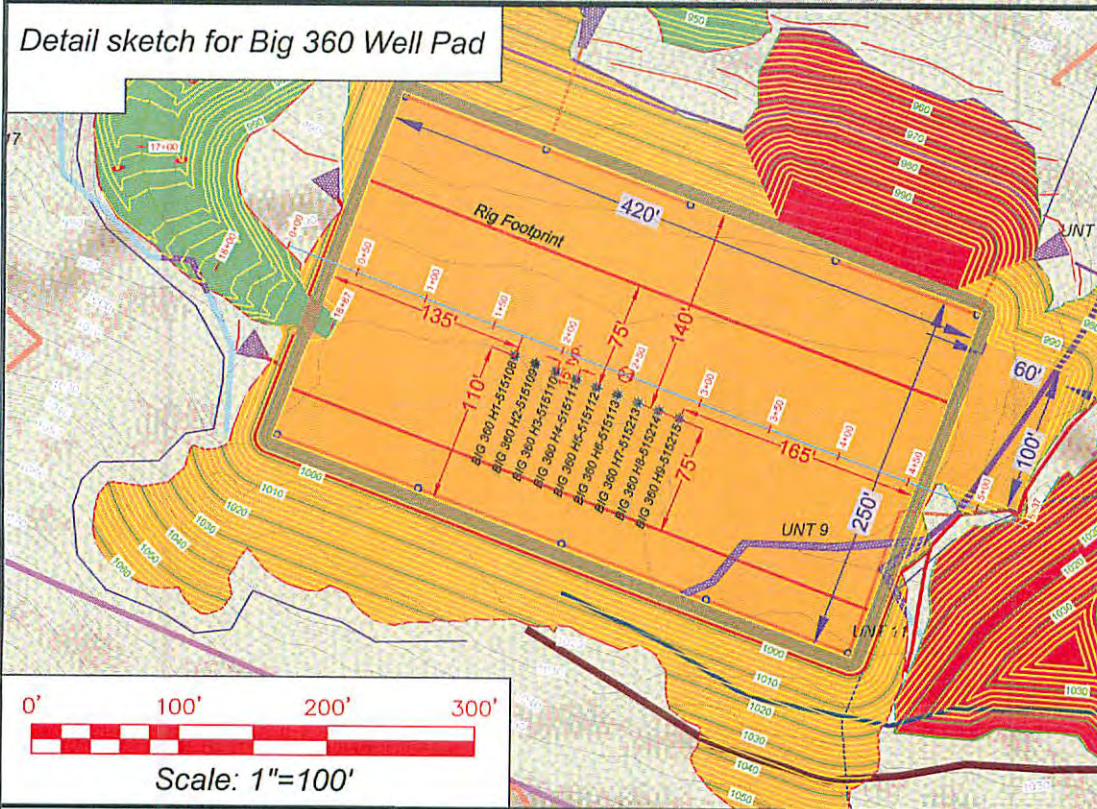
SURVEYING AND MAPPING SERVICES PERFORMED BY:  
**ALLEGHENY SURVEYS, INC.**  
 1-800-482-8606  
 Birch River Office Phone: (304) 649-8606 Fax: (304) 649-8608  
 237 Birch River Road P.O. Box 438 Birch River, WV 26610

DMH  
 12-10-15 RECEIVED  
 Office of Oil and Gas  
 DEC 14 2015

WV Department of Environmental Protection  
 01/29/2016



Detail sketch for Big 360 Well Pad



SECTION OF THE Big Run 7.5' USGS QUADRANGLE		Proposed Disturbance Area	
Projected culvert inventory. (for bid purposes only)		Well Site Location	See Site Plan
15" minimum diameter culverts	See Site Plan	Proposed Access Road	See Site Plan
24" minimum diameter culverts	See Site Plan	Approximate Total Disturbance	See Site Plan
DRAWN BY: Dale Tomlin	DATE: July 31, 2014	FILE NO. 17413	DRAWING FILE NO. 17413 Rec Plan

Note: SEE SITE PLAN OF BIG 360 FOR COMPLETE GRADING & DRAINAGE CONSTRUCTION INCLUDING EROSION & SEDIMENT CONTROL DETAILS, ETC.

RECEIVED  
Office of Oil and Gas  
DEC 14 2015  
WV Department of  
Environmental Protection  
01/29/2016



SURVEYING AND MAPPING SERVICES PERFORMED BY:  
**ALLEGHENY SURVEYS, INC.**  
1-800-482-8606  
Birch River Office  
Phone: (304) 649-8606  
Fax: (304) 649-8608  
237 Birch River Road  
P.O. Box 438  
Birch River, WV 26610



4710303034 MS

Where energy meets innovation.™

# Site Specific Safety Plan

EQT BIG 360 Pad

Jacksonburg

Wetzel County, WV

For Wells:

515108   515109   515110   515111   515112   \_\_\_\_\_

\_\_\_\_\_

\_\_\_\_\_

Date Prepared: August 7, 2014

*[Signature]*  
 EQT Production  
*Permitting Supervisor*  
 Title

12-8-15  
Date

Date Reviewed: December 3, 2015

*[Signature]*  
 WV Oil and Gas Inspector  
*Oil & Gas Inspector*  
 Title

12-10-15 **RECEIVED**  
 Date Office of Oil and Gas

DEC 14 2015

WV Department of Environmental Protection

01/29/2016

**SENDER: COMPLETE THIS SECTION**

- Complete items 1, 2, and 3.
- Print your name and address on the reverse so that we can return the card to you.
- Attach this card to the back of the mailpiece, or on the front if space permits.

1. Article Addressed to:  
 CNX Gas Company, Attn: Ryan Arp  
 Engineering & Operations Support Dept. Coal  
 CNX Center, 1000 Consol Energy Drive  
 Canonsburg, PA 15317  
 IG360 MOD

9590 9403 0752 5196 3274 15

Article Number (Transfer from service label)  
 015 0640 0003 3473 3141

Form 3811, April 2015 PSN 7530-02-000-9053

**COMPLETE THIS SECTION ON DELIVERY**

A. Signature  
 X *[Signature]*  Agent  Addressee

B. Received by (Printed Name)  
*Nickie Conner*

C. Date of Delivery  
 DEC 14 2013

D. Is delivery address different from item 1?  Yes  
 If YES, enter delivery address below:  No

3. Service Type  
 Adult Signature  Priority Mail Express®  
 Adult Signature Restricted Delivery  Registered Mail™  
 Certified Mail®  Registered Mail Restricted Delivery  
 Certified Mail Restricted Delivery  Return Receipt for Merchandise  
 Collect on Delivery  Signature Confirmation™  
 Collect on Delivery Restricted Delivery  Signature Confirmation Restricted Delivery  
 Insured Mail  Signature Confirmation Restricted Delivery (over \$500)

Domestic Return Receipt

**SENDER: COMPLETE THIS SECTION**

- Complete items 1, 2, and 3.
- Print your name and address on the reverse so that we can return the card to you.
- Attach this card to the back of the mailpiece, or on the front if space permits.

1. Article Addressed to:  
 CNX Land LLC, Attn: Ryan Arp  
 Engineering & Operations Support Dept. Coal  
 CNX Center, 1000 Consol Energy Drive  
 Canonsburg, PA 15317  
 G360 MOD

9590 9403 0752 5196 3274 22

Article Number (Transfer from service label)  
 015 0640 0003 3473 3134

Form 3811, April 2015 PSN 7530-02-000-9053

**COMPLETE THIS SECTION ON DELIVERY**

A. Signature  
 X *[Signature]*  Agent  Addressee

B. Received by (Printed Name)  
*Nickie Conner*

C. Date of Delivery  
 12/10/13

D. Is delivery address different from item 1?  Yes  
 If YES, enter delivery address below:  No

3. Service Type  
 Adult Signature  Priority Mail Express®  
 Adult Signature Restricted Delivery  Registered Mail™  
 Certified Mail®  Registered Mail Restricted Delivery  
 Certified Mail Restricted Delivery  Return Receipt for Merchandise  
 Collect on Delivery  Signature Confirmation™  
 Collect on Delivery Restricted Delivery  Signature Confirmation Restricted Delivery (over \$500)

Domestic Return Receipt

0334 MOD

**SENDER: COMPLETE THIS SECTION**

- Complete items 1, 2, and 3.
- Print your name and address on the reverse so that we can return the card to you.
- Attach this card to the back of the mailpiece, or on the front if space permits.

Mills Wetzel Lands, Inc.  
 Suite 2400, 222 N. LaSalle Street  
 Chicago, IL 60601  
 BIG360 MOD

9590 9403 0673 5196 9830 97

Article Number (Transfer from service label)  
 015 0640 0003 3473 3158

PS Form 3811, April 2015 PSN 7530-02-000-9053

**COMPLETE THIS SECTION ON DELIVERY**

A. Signature  
 X *[Signature]*  Agent  Addressee

B. Received by (Printed Name)  
*[Signature]*

C. Date of Delivery

D. Is delivery address different from item 1?  Yes  
 If YES, enter delivery address below:  No

3. Service Type  
 Adult Signature  Priority Mail Express®  
 Adult Signature Restricted Delivery  Registered Mail™  
 Certified Mail®  Registered Mail Restricted Delivery  
 Certified Mail Restricted Delivery  Return Receipt for Merchandise  
 Collect on Delivery  Signature Confirmation™  
 Collect on Delivery Restricted Delivery  Signature Confirmation Restricted Delivery (over \$500)

Domestic Return Receipt

01/29/2016

7015 0640 0003 3473 3141

**U.S. Postal Service™**  
**CERTIFIED MAIL® RECEIPT**  
*Domestic Mail Only*

For delivery information, visit our website at [www.usps.com](http://www.usps.com)®

**OFFICIAL USE**

Certified Mail Fee	\$
Extra Services & Fees (check box, add fee as appropriate)	
<input type="checkbox"/> Return Receipt (hardcopy)	\$
<input type="checkbox"/> Return Receipt (electronic)	\$
<input type="checkbox"/> Certified Mail Restricted Delivery	\$
<input type="checkbox"/> Adult Signature Required	\$
<input type="checkbox"/> Adult Signature Restricted Delivery	\$

Postmark  
Here

Postage	\$
---------	----

CNX Gas Company, Attn: Ryan Arp  
Engineering & Operations Support Dept. Coal  
CNX Center, 1000 Consol Energy Drive  
Canonsburg, PA 15317  
BIG360 MOD

Instructions

7015 0640 0003 3473 3134

**U.S. Postal Service™**  
**CERTIFIED MAIL® RECEIPT**  
*Domestic Mail Only*

For delivery information, visit our website at [www.usps.com](http://www.usps.com)®

**OFFICIAL USE**

Certified Mail Fee	\$
Extra Services & Fees (check box, add fee as appropriate)	
<input type="checkbox"/> Return Receipt (hardcopy)	\$
<input type="checkbox"/> Return Receipt (electronic)	\$
<input type="checkbox"/> Certified Mail Restricted Delivery	\$
<input type="checkbox"/> Adult Signature Required	\$
<input type="checkbox"/> Adult Signature Restricted Delivery	\$

Postmark  
Here

Postage	\$
---------	----

CNX Land LLC, Attn: Ryan Arp  
Engineering & Operations Support Dept. Coal  
CNX Center, 1000 Consol Energy Drive  
Canonsburg, PA 15317  
BIG360 MOD

Instructions

7015 0640 0003 3473 3158

**U.S. Postal Service™**  
**CERTIFIED MAIL® RECEIPT**  
*Domestic Mail Only*

For delivery information, visit our website at [www.usps.com](http://www.usps.com)®

**OFFICIAL USE**

Certified Mail Fee	\$
Extra Services & Fees (check box, add fee as appropriate)	
<input type="checkbox"/> Return Receipt (hardcopy)	\$
<input type="checkbox"/> Return Receipt (electronic)	\$
<input type="checkbox"/> Certified Mail Restricted Delivery	\$
<input type="checkbox"/> Adult Signature Required	\$
<input type="checkbox"/> Adult Signature Restricted Delivery	\$

Postmark  
Here

Postage	\$
---------	----

Mills Wetzel Lands, Inc.  
Suite 2400, 222 N. LaSalle Street  
Chicago, IL 60601  
BIG360 MOD

Instructions

170 103 0334 MOD

WW-6A1  
(5/13)Operator's Well No. 515112

**INFORMATION SUPPLIED UNDER WEST VIRGINIA CODE  
Chapter 22, Article 6A, Section 5(a)(5)  
IN LIEU OF FILING LEASE(S) AND OTHER CONTINUING CONTRACT(S)**

Under the oath required to make the verification on page 1 of this Notice and Application, I depose and say that I am the person who signed the Notice and Application for the Applicant, and that –

- (1) the tract of land is the same tract described in this Application, partly or wholly depicted in the accompanying plat, and described in the Construction and Reclamation Plan;
- (2) the parties and recordation data (if recorded) for lease(s) or other continuing contract(s) by which the Applicant claims the right to extract, produce or market the oil or gas are as follows:

Lease Name or Number	Grantor, Lessor, etc.	Grantee, Lessee, etc.	Royalty	Book/Page
<u>Lease 988530</u>	Mills Wetzel Lands, Inc.	EQT Production Company	Min 1/8 pd	O&G 126A/288
<u>4-23-01</u>	Billy Dewayne Arnolds, Jr.	EQT Production Company	N/A Subsurface Easement (see attached)	O&G 115/906
<u>1.1187216222</u>	Georgia H. Jones, et al.	H.S. Grayson	Min 1/8 pd	DB 53/169
	H.S. Grayson (50% assigned)	South Penn Oil Company		DB 49/154
	South Penn Oil Company	South Penn Natural Gas Company		O&G 33A/455
	South Penn Natural Gas Company	South Penn Oil Company		DB 215/478
	South Penn Oil Company	Pennzoil Company		Unrecorded Merger - See attached
	Pennzoil Company	Pennzoil United Inc.		DB 246/491
	Pennzoil United Inc.	Pennzoil Company		Unrecorded Name Change - See attached
	Pennzoil Company	Pennzoil Products Company		DB 319/397
	Pennzoil Products Company	Pennzoil Exploration and Production Company		DB 363/384
	Pennzoil Exploration and Production Company	Pennzenergy Exploration and Pr		CB 12/178
	Pennzenergy Exploration and Production Company L	Devon Energy Production Company L.P.		CB 12/278
	Devon Energy Production Company L.P.	East Resources, Inc.		CB 370/580
	East Resources, Inc.	HG Energy, LLC		LB 118A/253
	HG Energy, LLC	American Energy - Marcellus, LLC		DB 153/238
	American Energy - Marcellus, LLC	Ascent Resources - Marcellus, LLC		MB 114/619
	Ascent Resources - Marcellus, LLC	EQT Production Company		O&G 166A/663
	Georgia H. Jones, et al.	H.S. Grayson		DB 53/169
	H.S. Grayson (25% assigned)	Woodland Oil Company		DB 53/257
	Woodland Oil Company	South Penn Oil Company		DB 53/259
	South Penn Oil Company	Pennzoil Company		Unrecorded Merger - See attached
	Pennzoil Company	Pennzoil United Inc.		DB 246/491
	Pennzoil United Inc.	Pennzoil Company		Unrecorded Name Change - See attached
	Pennzoil Company	Pennzoil Products Company		DB 319/397
	Pennzoil Products Company	Pennzoil Exploration and Production Company		DB 363/384
	Pennzoil Exploration and Production Company	Pennzenergy Exploration and Production Company LLC		CB 12/178
	Pennzenergy Exploration and Production Company L	Devon Energy Production Company L.P.		CB 12/278

**RECEIVED**  
**Office of Oil and Gas**  
**DEC 14 2015**  
**01/29/2016**  
**WV Department of Environmental Protection**  
Page 1 of 2



Devon Energy Production Company L.P.	East Resources, Inc.	CB 370/580
East Resources, Inc.	HG Energy, LLC	LB 118A/253
HG Energy, LLC	American Energy - Marcellus, LLC	DB 153/238
American Energy - Marcellus, LLC	Ascent Resources - Marcellus, LLC	MB 114/619
Ascent Resources - Marcellus, LLC	EQT Production Company	O&G 166A/663
Georgia H. Jones, et al.	H.S. Grayson	DB 53/169
H.S. Grayson (25% assigned)	W. H. Hearne	DB 48/86 & 49/185
W. H. Hearne	Pennzoil Products Company	LB 71A/584
Pennzoil Products Company	Pennzoil Exploration and Production Company	DB 363/384
Pennzoil Exploration and Production Company	Pennzenergy Exploration and Production Company LLC	CB 12/178
Pennzenergy Exploration and Production Company L	Devon Energy Production Company L.P.	CB 12/278
Devon Energy Production Company L.P.	East Resources, Inc.	CB 370/580
East Resources, Inc.	HG Energy, LLC	LB 118A/253
HG Energy, LLC	American Energy - Marcellus, LLC	DB 153/238
American Energy - Marcellus, LLC	Ascent Resources - Marcellus, LLC	MB 114/619
Ascent Resources - Marcellus, LLC	EQT Production Company	O&G 166A/663

Upon information and belief, Operator's lease and/or other real property rights permit it to conduct drilling operations for the subject well in the location shown on the plat, including under any public roads that the well lateral crosses.

**Acknowledgement of Possible Permitting/Approval  
In Addition to the Office of Oil and Gas**

The permit applicant for the proposed well work addressed in this application hereby acknowledges the possibility of the need for permits and/or approvals from local, state, or federal entities in addition to the DEP, Office of Oil and Gas, including but not limited to the following:

- WV Division of Water and Waste Management
- WV Division of Natural Resources WV Division of Highways
- U.S. Army Corps of Engineers
- U.S. Fish and Wildlife Service
- County Floodplain Coordinator

The applicant further acknowledges that any Office of Oil and Gas permit in no way overrides, replaces, or nullifies the need for other permits/approvals that may be necessary and further affirms that all needed permits/approvals should be acquired from the appropriate authority before the affected activity is initiated.

Well Operator: EQT Production Company  
 By:   
 Its: Permitting Supervisor

RECEIVED  
Office of Oil and Gas  
DEC 14 2015  
WV Department of  
Environmental Protection  
01/29/2016



4710303034 MOP

EQT Production Company  
2400 Zenith Ridge Rd.  
Suite 200  
Canonsburg, PA 15317  
www.eqt.com

Todd Klaner  
Manager, Permitting  
tklaner@eqt.com

December 8, 2015

**WV DEP Reviewer**

**RE: EQT Production Company  
PAD ID – BIG360  
Well# - 515112  
Wetzel County**

Dear Reviewer,

This well indicated by this permit application contains a Subsurface Easement Agreement for non-productive portions of the well bore. Attached is a Memorandum of Subsurface Use Agreement which gives EQT the right to drill below the surface of the tract 23/1, shown on the well plat.

EQT Production understands that the WVDEP will issue the permit in the normal process subject to the completeness of the requirements of the Office of Oil and Gas and does not take a position with regards to the property rights under this agreement.

EQT Production agrees that the WVDEP's issuance of the permit is in no way an affirmation or validation of EQT Production's claimed rights.

Regards,

Todd Klaner  
Manager, Permitting  
EQT Production Company

**RECEIVED**  
**Office of Oil and Gas**  
**DEC 14 2015**  
**WV Department of**  
**Environmental Protection**

01/29/2016

4710303034

MOV  
Carol S Haught  
WETZEL County 11:24:13 AM  
Instrument No 192164  
Date Recorded 12/07/2015  
Document Type R/W  
Pages Recorded 3  
Book-Page 115-906  
Recording Fee \$5.00  
Transfer Tax \$88.00  
Additional \$26.00

MEMORANDUM OF  
SUBSURFACE RIGHT-OF-WAY AND EASEMENT AGREEMENT

County Clerk please also index under the following: Stilben Estates, Inc.

1. NAME AND ADDRESS OF GRANTOR:

Billy Dewayne Arnolds Jr.  
312 Richwood Run Rd.  
Jacksonburg, WV 26377

2. NAME AND ADDRESS OF GRANTEE:

EQT Production Company  
625 Liberty Avenue  
Suite 1700  
Pittsburgh, PA 15222

3. SUBSURFACE RIGHT-OF-WAY AND EASEMENT AGREEMENT REFERENCE:

A SUBSURFACE RIGHT-OF-WAY AND EASEMENT AGREEMENT ("Agreement") dated the 23rd day of September, 2015, was entered into for good and valuable consideration by and between Billy Dewayne Arnolds Jr. ("Grantor", whether one or more) and EQT Production Company ("Grantee"). Upon completion of any wellbore within the subsurface area underlying the Property (as defined in Section 4), this subsurface easement in the area of the wellbore and the one hundred (100') feet on each side of the wellbore that parallels it shall become an exclusive right of way and easement in that area. The final wellbore locations are as described in a final, as-built map(s) to be filed as a part of an affidavit in the aforesaid Clerk's Office following the completion of the following well(s) located on Grantee's BIG 360 well pad. If an as-built map is not available for a wellbore within the subsurface area underlying the Property, any third-party with the right to operate within such area may contact Grantee's land department for a copy of such as-built map. Grantee shall provide notice of additional wellbores located within the subsurface area underlying the Property by filing an amendment, affidavit or other appropriate document.

4. DESCRIPTION OF PREMISES: That certain tract or parcel of land containing 16.5 acres, more or less, located in Grant District in Wetzel County, West Virginia, being the same lands conveyed to Grantor by Deed dated the 11th day of December, 2002, of record in the Office of the Clerk of the County Commission of Wetzel County, West Virginia in Deed Book 384, at Page 627 ("the Property").

5. TERM: The Agreement shall run with the land and shall remain in full force and effect until released and relinquished by the Grantee back to the Grantor, in writing.

(REMAINDER OF PAGE LEFT BLANK INTENTIONALLY)

RECEIVED  
Office of Oil and Gas

DEC 14 2015

WV Department of  
Environmental Protection  
01/29/2016

IN WITNESS WHEREOF, the parties have signed their names hereto as of the date of the Agreement referenced in Section 3 above.

GRANTOR:

GRANTEE:

EQT Production Company

Billy Dewayne Arnolds Jr.  
Billy Dewayne Arnolds Jr.

John W. Damato  
By: John W. Damato  
Its Attorney in fact

STATE OF WEST VIRGINIA

COUNTY OF WETZEL

I, Bryson J. Karp, a Notary Public, in and for said State and County, do hereby certify that Billy Dewayne Arnolds Jr., personally known to be the same persons whose names are subscribed to the foregoing instrument, appeared before me this day in person in the State and County aforesaid, and acknowledged and delivered the said instrument to be their free act and deeds for uses and purposes therein set forth.

Given under my hand this 23<sup>rd</sup> day of SEPTEMBER, 2015.

My Commission expires: JAN 1 2021.

OFFICIAL SEAL  
COMMISSIONER FOR WEST VIRGINIA  
Bryson J. Karp  
Weston, WV  
My Commission Expires January 1, 2021

Bryson J. Karp  
Notary Public

STATE OF WEST VIRGINIA;

COUNTY OF HARRISON:

I, Katelyn L. Liston, a Notary Public, in and for said State and County, do hereby certify that John W. Damato, personally known to be the same person whose name is subscribed to the foregoing instrument and the Attorney in fact of EQT Production Company, appeared before me this day in person in the State and County aforesaid, and acknowledged and delivered the said instrument to be his free act and deed for uses and purposes therein set forth on behalf of said company.

Given under my hand this 21<sup>th</sup> day of September, 2015.

My Commission expires: May 16, 2024.

OFFICIAL SEAL  
Notary Public, State of West Virginia  
KATELYN L. LISTON  
1306 Serene Drive  
Fairmont, WV 26554  
My commission expires May 16, 2024

Katelyn L. Liston  
Notary Public

RECEIVED  
Office of Oil and Gas

DEC 14 2015


WV Department of  
Environmental Protection  
01/29/2016

4710303034 MOP

Declaration of Consideration of Value

The Grantee hereby declares that the consideration being paid to Grantor for the transfer of real estate is \$\_\_\_\_\_.

Given under my hand this 4<sup>th</sup> day of December, 2015.

  
EQT PRODUCTION COMPANY  
John W. Damato  
Attorney-In-Fact

RECEIVED  
Office of Oil and Gas  
DEC 14 2015  
WV Department of  
Environmental Protection  
01/29/2016

3-1-63.18 120

ARTICLES OF MERGER  
OF  
ZAPATA PETROLEUM CORPORATION  
AND  
STETCO PETROLEUM CORPORATION  
INTO  
SOUTH PENN OIL COMPANY

In compliance with the requirements of Article IX of the Act of the General Assembly of the Commonwealth of Pennsylvania, known as the Business Corporation Law, approved May 3, 1913, P. L. 361, and amendments thereto, providing for the merger and consolidation of corporations, SOUTH PENN OIL COMPANY, a Pennsylvania corporation, ZAPATA PETROLEUM CORPORATION, a Delaware corporation, and STETCO PETROLEUM CORPORATION, a Delaware corporation, hereby certify under their respective corporate seals:

1. That it is proposed that Zapata Petroleum Corporation and Stetco Petroleum Corporation be merged into South Penn Oil Company in accordance with the provisions of a joint plan of merger entitled "Joint Plan and Agreement of Merger" and dated May 7, 1963, a copy of which is attached hereto and made a part hereof.

2. That the surviving corporation is South Penn Oil Company, that the name of the surviving corporation be changed to Pennzoll Company and that the location of its registered office is Drake Building, 106 Duncomb Street, Oil City, Pennsylvania.

3. That a special meeting of shareholders of South Penn Oil Company to take action upon the proposed merger was held at 10:00 o'clock A.M. on July 2, 1963, at the registered office of said corporation, Drake Building, 106 Duncomb Street, Oil City, Pennsylvania; that written notice, stating the place, day, hour and purposes of the meeting, together with a copy of said joint plan of merger and a copy of subsection A of section 908 and of subsections A, B, C and D of section 515 (Rights of dissenting shareholders) of the said Pennsylvania Business Corporation Law, was mailed on June 11, 1963, to all shareholders of said corporation of record on May 28, 1963, which was fixed as the record date for determining the shareholders entitled to vote at said meeting.

4. That at the time of the special meeting of shareholders of South Penn Oil Company on July 2, 1963, the authorized number of all shares of the capital stock of said corporation was 1,715,000 shares of common stock of the par value of \$12.50 each, of which 1,589,750 shares were outstanding and were entitled to be voted at the meeting and 112,850 shares were held in the treasury of said corporation and were not entitled to be voted at the meeting; and that at said meeting said joint plan of merger was adopted and approved by the affirmative vote of the holders of 1,187,642 shares of common stock, there having been voted against the same 24,680 shares of common stock.

5. That the Joint Plan and Agreement of Merger was duly authorized, adopted and approved by Zapata Petroleum Corporation and Stetco Petroleum Corporation in accordance with the laws of the State of Delaware, the jurisdiction in which they were formed.

6. That, as provided in Section 5 of said joint plan of merger, the Articles of Incorporation of South Penn Oil Company, as heretofore amended, shall be amended and restated in their entirety by revising same to read in full as set forth in Exhibit A to said joint plan of merger.

RECEIVED  
Office of Oil and Gas

DEC 14 2015

WV Department of  
Environmental Protection  
01/29/2016

3-1-63, 18 121

Henceforth the "Articles" as defined in Article I of the Business Corporation Law of the Commonwealth of Pennsylvania shall not include any prior documents.

7. That the following are the names and addresses of the sixteen persons who shall constitute the first Board of Directors of the Surety Corporation:

<u>Name</u>	<u>Address</u>
D. D. Hornick	P. O. Box 2590 Tulsa, Oklahoma
Edward P. Boyle	205 Maple Avenue Oil City, Pennsylvania
George L. Coleman	1137 West Jackson Boulevard Chicago, Illinois
James G. S. Gannell	"Inverwick" Klersy Road Kilbuck 12, Scotland
R. B. Gilpatrick, Jr.	Mellon National Bank and Trust Company Fifth Avenue Pittsburgh 19, Pennsylvania
R.W. Grunert	Drake Building 106 Duncannon Street Oil City, Pennsylvania
L. F. Johnson	2105 1/2 W. 10th Los Angeles, California
J. Hugh Liedtke	Room 410, Four Gateway Center Pittsburgh, Pennsylvania
William C. Liedtke, Jr.	First National Bank Building Midland, Texas
T. L. McDowell	McDowell, McDowell, Wick & Daly 50 Boylston Street Bradford, Pennsylvania
John B. Mitchell	12 South Kendall Avenue Bradford, Pennsylvania
Thomas O'D. Murray	Room 410, Four Gateway Center Pittsburgh, Pennsylvania
A. J. Saxe	Drake Building 20 Parkway Lane Hendford, Pennsylvania
Charles L. Suhr	P. O. Box 601 Oil City, Pennsylvania
J. Z. VanThine	30 Harbour Street Bradford, Pennsylvania
W. S. Zehrung	115 Wyllys Oil City, Pennsylvania

RECEIVED  
Office of Oil and Gas

DEC 14 2015

WV Department of  
Environmental Protection

01/29/2016

3-1-63.18 v. 122

IN TESTIMONY WHEREOF, South Penn Oil Company, Zapata Petroleum Corporation and Stetco Petroleum Corporation have caused these Articles of Merger to be executed under the seal of each corporation and to be signed by two duly authorized officers of each corporation, this 2nd day of July, 1963.

SOUTH PENN OIL COMPANY

Attest:

J. H. Youn

Secretary

By J. Hugh LINTNER

President

(Corporate Seal)

Attest:

W. M. BRUNLEY, JR.

Secretary

ZAPATA PETROLEUM CORPORATION

By W. A. HOVER

President

(Corporate Seal)

Attest:

MARINE MITCHELL

Secretary

STETCO PETROLEUM CORPORATION

By WILLIAM C. LINTNER, JR.

President

(Corporate Seal)



CARD TO BE REPLACED ONLY BY FILING CLERK

Name PENNZOIL UNITED, INC.

Foreign Corporation Delaware

Address 900 Southwest Tower  
Houston, Texas

Admitted April 1, 1968

Roll ROLL 10

AMENDMENT: Certificate of Incorporation; filed September 27, 1968; Roll 15.

AMENDMENT: Certificate of Incorporation; filed February 11, 1969; Roll 20.

AMENDMENT: Certificate of Incorporation; filed May 19, 1969; Roll 23.

MERGER: Elk Refining Company, a W. Va. corp., merged with and into Pennzoil United, Inc., the survivor; filed December 31, 1969; ROLL 30.

MERGER: Wolf's Head Oil Refining Company, Incorporated, a Dela. corp., and Elk Refining Co., (See above), merged with and into Pennzoil United, Inc., the survivor; filed January 20, 1970; Roll 31.

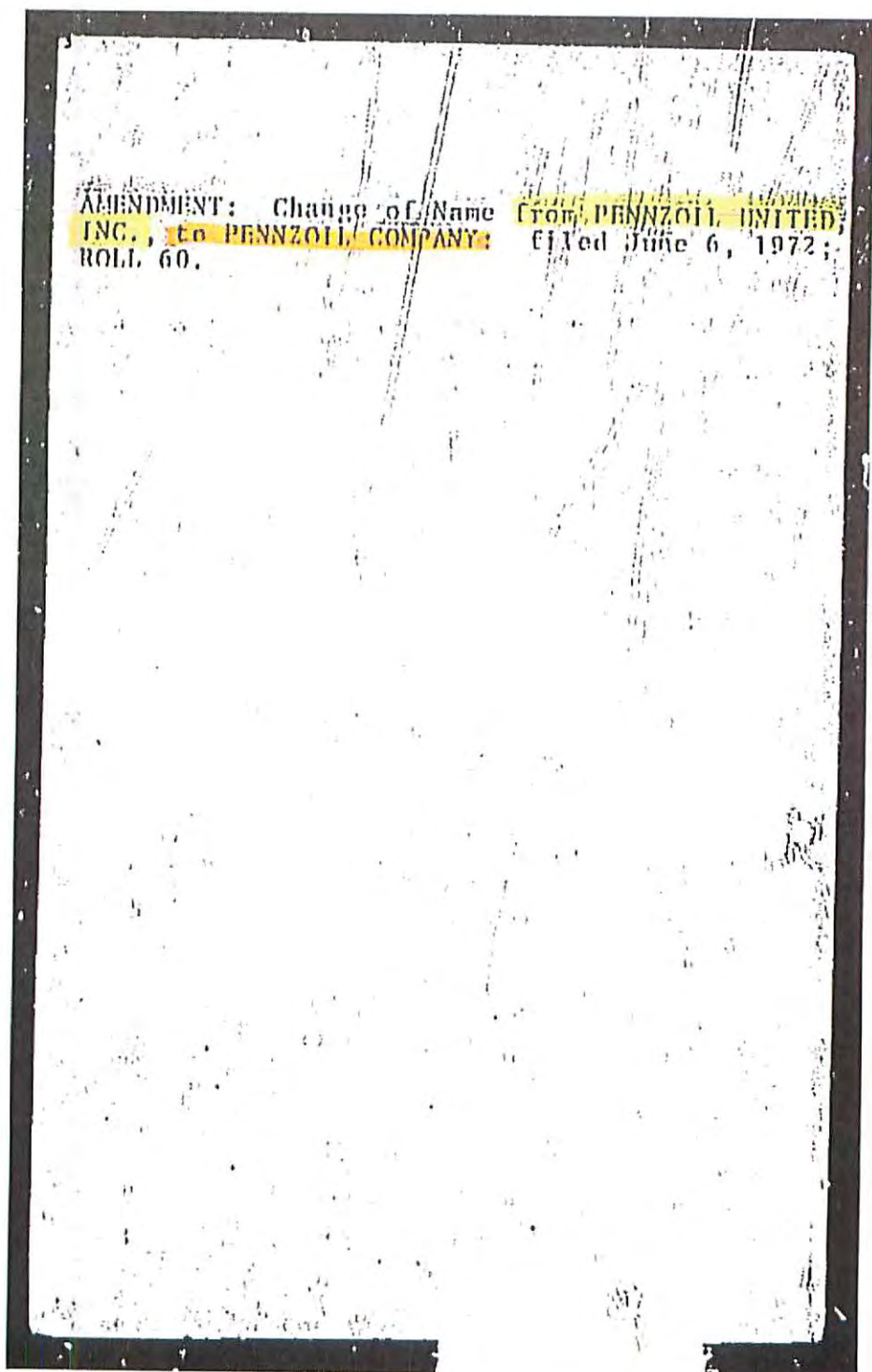
(OVER)

Column 1	5	5	4
Column 2	5	9	3
Column 3	1	3	6
Column 4	4	6	3

RECEIVED  
Office of Oil and Gas

DEC 14 2015

WV Department of  
Environmental ~~01/20/2016~~



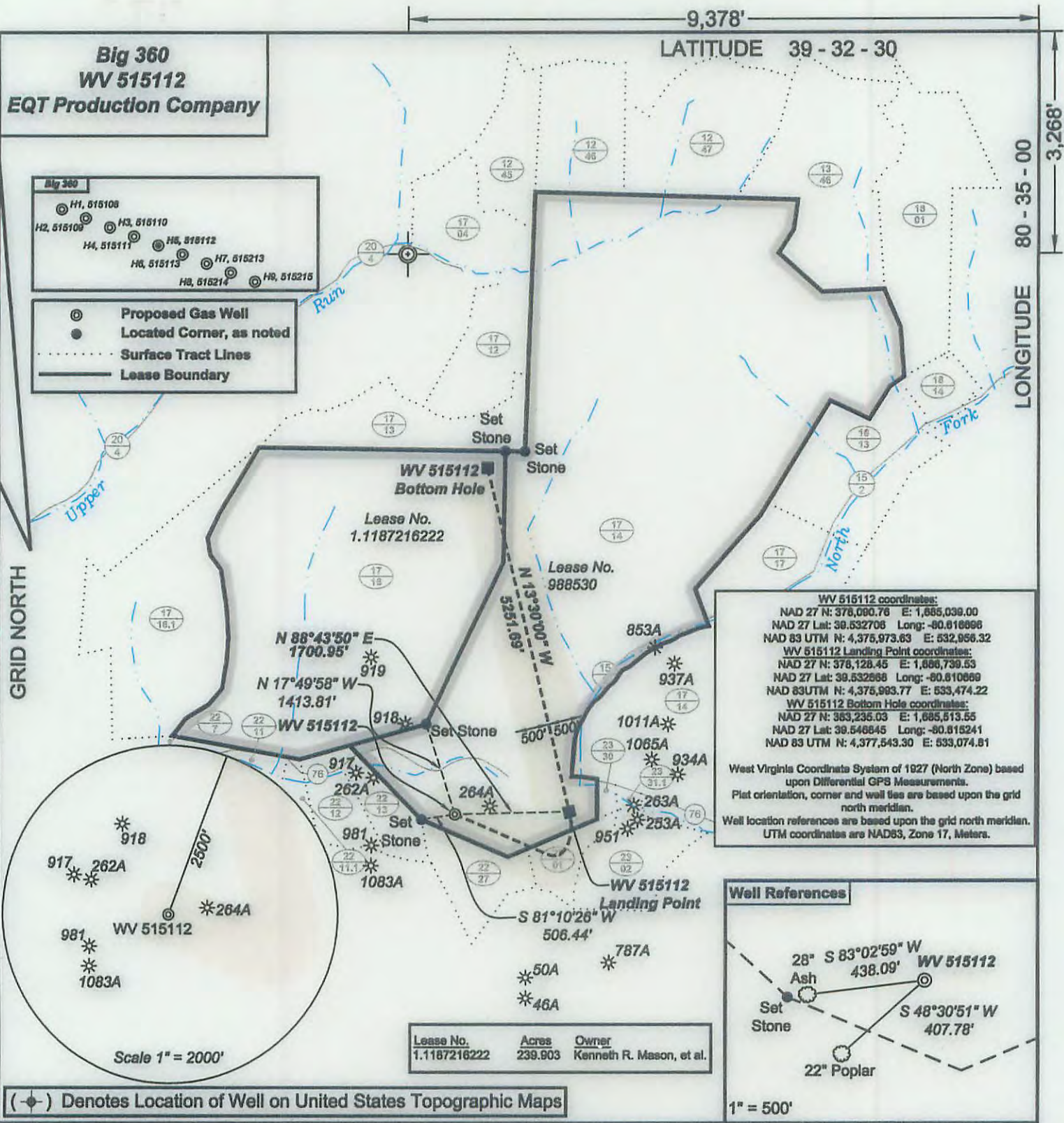
AMENDMENT: Change of Name From PENNZOIL UNITED  
INC. to PENNZOIL COMPANY: Filed June 6, 1972;  
ROLL 60.

RECEIVED  
Office of Oil and Gas

DEC 14 2015

WV Department of  
Environmental Protection

01/29/2016

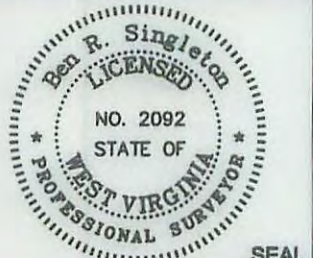


(-○-) Denotes Location of Well on United States Topographic Maps



*I, the undersigned, hereby certify that this plat is correct to the best of my knowledge and belief and shows all the information required by law and the regulations issued and prescribed by the Department of Environmental Protection.*

*Ben R. Singleton*  
P.S. 2092



FILE NO: 174-13  
 DRAWING NO: 174-13 Big 360 H5  
 SCALE: 1" = 2000'  
 MINIMUM DEGREE OF ACCURACY: 1:2500  
 PROVEN SOURCE OF ELEVATION: NGS CORS Station

**STATE OF WEST VIRGINIA**  
 DEPARTMENT OF ENVIRONMENTAL PROTECTION  
**OIL AND GAS DIVISION**

DATE: December 4 20 15  
 OPERATOR'S WELL NO. 515112  
 API WELL NO  
 47 - 103 - 03034 HLA  
 STATE COUNTY PERMIT

WELL TYPE:  OIL  GAS  LIQUID INJECTION  WASTE DISPOSAL  
 (IF GAS) PRODUCTION:  STORAGE  DEEP  SHALLOW  
 LOCATION: ELEVATION: Original Ground = 1008' Proposed Ground = 998' WATERSHED Richwood Run QUADRANGLE: Big Run  
 DISTRICT: Grant COUNTY: Wetzel  
 SURFACE OWNER: Coastal Forest Resources Co. f/k/a Coastal Lumber Company ACREAGE: 1,636.5  
 ROYALTY OWNER: Mills-Wetzel Land, Inc., LEASE NO: 988530, ACREAGE: 659,  
 PROPOSED WORK:  DRILL  CONVERT  DRILL DEEPER  FRACTURE OR STIMULATE  PLUG OFF OLD FORMATION  
 PERFORATE NEW FORMATION  OTHER PHYSICAL CHANGE IN WELL (SPECIFY)  
 PLUG AND ABANDON  CLEAN OUT AND REPLUG TARGET FORMATION: Marcellus ESTIMATED DEPTH: 7,084'

WELL OPERATOR: EQT Production Company DESIGNATED AGENT: Rex C. Ray  
 ADDRESS: 115 Professional Place PO Box 280 ADDRESS: 115 Professional Place PO Box 280  
 Bridgeport, WV 26330 Bridgeport, WV 26330