

Note: No water wells within 250' of well were found, no dwellings within 625' of pad center were found.

NOTE: BORE PATH BASED ON GRID NORTH.

SURFACE HOLE
 UTM. NAD83, ZONE 17
 IN METERS
 N) 4,384,031.0
 E) 512,300.7
 UTM. NAD83, ZONE 17
 IN FEET
 N) 14,383,275
 E) 1,680,773

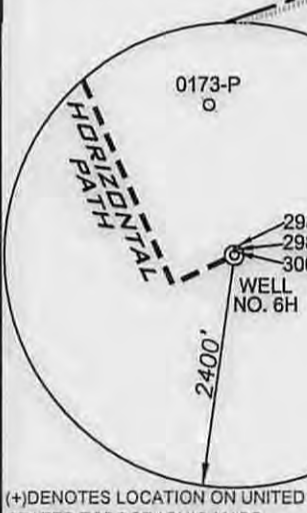
TARGET POINT 1
 UTM. NAD83, ZONE 17
 IN METERS
 N) 4,383,937.7
 E) 512,105.9
 UTM. NAD83, ZONE 17
 IN FEET
 N) 14,382,969
 E) 1,680,134

BOTTOM HOLE
 UTM. NAD83, ZONE 17
 IN METERS
 N) 4,385,739.9
 E) 511,267.2
 UTM. NAD83, ZONE 17
 IN FEET
 N) 14,388,882
 E) 1,677,383

NOTES
 OWNERSHIP TAKEN FROM PUBLIC RECORDS OF WETZEL COUNTY, WV IN SEPTEMBER, 2014.
 COORDINATES AND WELL TIES BASED UPON DIFFERENTIAL GPS MEASUREMENTS. WELL LOCATION REFERENCES ARE BASED UPON THE MAGNETIC MERIDIAN.

SURFACE TRACT TABLE

"S1"	7-142	P. WEISENBARGER	1.35 AC.
"S2"	12-3	T. COFFIELD, TRUST	0.98 AC.
"S3"	12-43.1	P. WEAVER, ET AL	22.25 AC.
"S4"	12-41	P. WEAVER, ET AL	3.39 AC.
"S5"	12-43.4	M.B. INVESTMENTS	0.99 AC.
"S6"	12-110	LACKAWANNA TRANS. CO.	3.59 AC.
"S7"	12-72	P. WEAVER, ET AL	0.50 AC.
"S8"	12-43.3	G. CROSS	0.13 AC.
"S9"	12-111	WV CONSERVATION COMM	1.0 AC.
"S10"	12-124	M.B. INVESTMENTS	2.23 AC.
"S11"	12-134.2	M.B. INVESTMENTS	0.23 AC.
"S12"	12-112.1	M.B. INVESTMENTS	0.82 AC.
"S13"	12-134.4	M.B. INVESTMENTS	3.51 AC.



LEGEND

- LEASED TRACTS
- INTERIOR MINERAL TRACTS
- SURFACE TRACTS
- HARD LEASE LINE

FILE NUMBER W0110309
 DRAWING NUMBER LACKAWANNA_WP_6H_Rev1
 SCALE 1" = 1000'
 MINIMUM DEGREE OF ACCURACY 1/200
 PROVEN SOURCE SUBMETER MAPPING
 OF ELEVATION GRADE GPS

I, THE UNDERSIGNED, HEREBY CERTIFY THAT THIS PLAT IS CORRECT TO THE BEST OF MY KNOWLEDGE AND BELIEF AND SHOWS ALL THE INFORMATION REQUIRED BY LAW AND THE REGULATIONS ISSUED AND PRESCRIBED BY THE DEPARTMENT OF ENVIRONMENTAL PROTECTION

P.S. Jonathan N. White
 2122



WVDEP
 OFFICE OF OIL & GAS
 601 57TH STREET
 CHARLESTON, WV 25304

DATE REVISED: FEBRUARY 09, 2015

OPERATORS WELL NO. LACKAWANNA NO. 6H
 API WELL NO. 47-103-03051H6A

WELL TYPE: OIL ___ GAS X LIQUID INJECTION ___ WASTE DISPOSAL ___
 (IF "GAS") PRODUCTION X STORAGE ___ DEEP ___ SHALLOW X

LOCATION ELEVATION 1302' WATERSHED (HUC 10) OUTLET MIDDLE ISLAND CREEK (UNDEFINED)

DISTRICT MAGNOLIA COUNTY WETZEL

QUADRANGLE PORTERS FALLS 7.5' LEASE NUMBER WV140-0006-001, WV140-0016-001, WV140-0014-000, WV140-0004-001, WV140-0005-001

SURFACE OWNER M.B. INVESTMENTS ACREAGE 88.09
 OIL & GAS ROYALTY OWNER M.B. INVESTMENTS, ET AL LEASE ACREAGE 649.29

PROPOSED WORK: DRILL X CONVERT ___ DRILL DEEPER ___ REDRILL ___ FRACTURE OR STIMULATE X PLUG OFF OLD FORMATION ___
 PERFORATE NEW FORMATION ___ OTHER PHYSICAL CHANGE (SPECIFY) ___

TARGET FORMATION MARCELLUS ESTIMATED DEPTH TVD: 6975' TMD: 13,137'
 WELL OPERATOR GASTAR EXPLORATION INC. DESIGNATED AGENT MICHAEL McCOWN

ADDRESS 229 W MAIN STREET, SUITE 301 CLARKSBURG WV, 26301 ADDRESS 229 W MAIN STREET, SUITE 301 CLARKSBURG WV, 26301

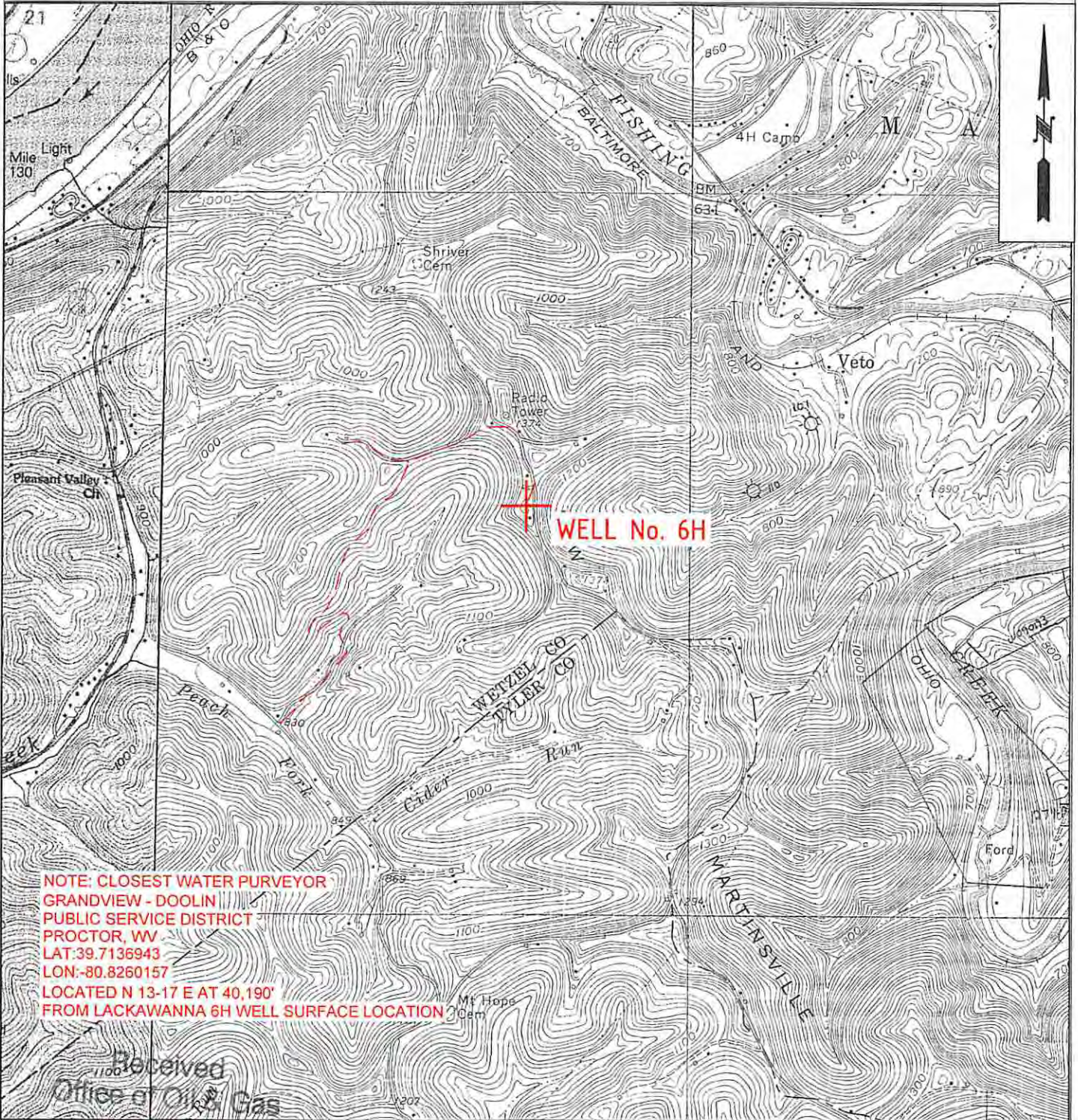
02/20/2015

WW-9

PROPOSED LACKAWANNA WELL No. 6H

SUPPLEMENT PG 2

4710303051



NOTE: CLOSEST WATER PURVEYOR
 GRANDVIEW - DOOLIN
 PUBLIC SERVICE DISTRICT
 PROCTOR, WV
 LAT: 39.7136943
 LON: -80.8260157
 LOCATED N 13-17 E AT 40,190'
 FROM LACKAWANNA 6H WELL SURFACE LOCATION

Received
 Office of Oil & Gas

OCT 08 2014

DmH
10-2-14

OPERATOR
 GASTAR EXPLORATION INC.
 229 W Main Street, Suite 301
 Clarksburg, WV 26301

TOPO SECTION
 PORTERS FALLS 7.5'
SCALE:
 1"=2000'

LEASE NAME
 LACKAWANNA
DATE:
 DATE: 09/17/14

W0110309