

**WV 515489**  
**EQT Production Company**  
**L.G. Robinson et. vir. Lease**  
**2600 Acres**

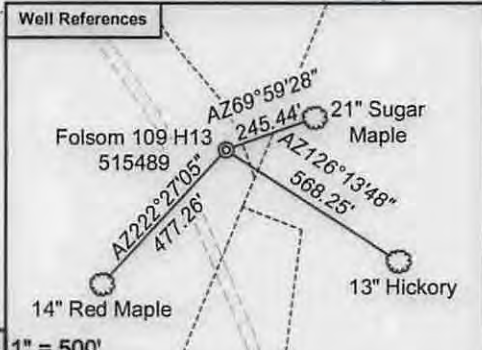
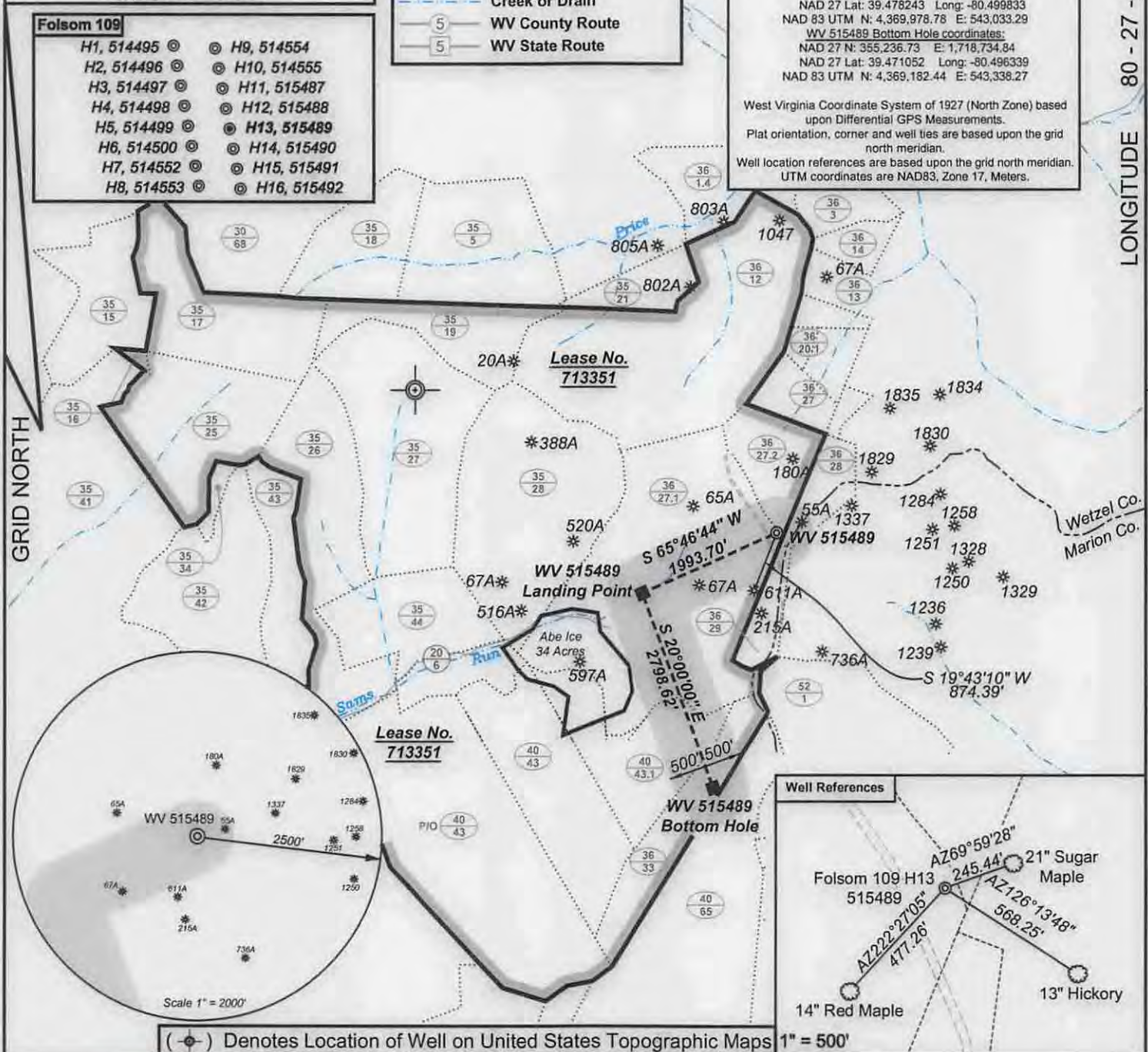
- ⊙ Proposed Gas Well
- Located Corner, as noted
- Surface Tract Lines
- Reference Line
- Lease Boundary
- Creek or Drain
- ⑤ WV County Route
- ⑤ WV State Route

9900'  
 LATITUDE 39 - 30 - 00

WV 515489 coordinates:  
 NAD 27 N: 358,684.51 E: 1,719,595.85  
 NAD 27 Lat: 39.480543 Long: -80.493425  
 NAD 83 UTM N: 4,370,237.21 E: 543,583.07  
 WV 515489 Landing Point coordinates:  
 NAD 27 N: 357,866.57 E: 1,717,777.66  
 NAD 27 Lat: 39.478243 Long: -80.499833  
 NAD 83 UTM N: 4,369,978.78 E: 543,033.29  
 WV 515489 Bottom Hole coordinates:  
 NAD 27 N: 355,236.73 E: 1,718,734.84  
 NAD 27 Lat: 39.471052 Long: -80.496339  
 NAD 83 UTM N: 4,369,182.44 E: 543,338.27

West Virginia Coordinate System of 1927 (North Zone) based upon Differential GPS Measurements.  
 Plat orientation, corner and well ties are based upon the grid north meridian.  
 Well location references are based upon the grid north meridian.  
 UTM coordinates are NAD83, Zone 17, Meters.

- Folsom 109**
- H1, 514495 ⊙ ⊙ H9, 514554
  - H2, 514496 ⊙ ⊙ H10, 514555
  - H3, 514497 ⊙ ⊙ H11, 514547
  - H4, 514498 ⊙ ⊙ H12, 515488
  - H5, 514499 ⊙ ⊙ H13, 515489
  - H6, 514500 ⊙ ⊙ H14, 515490
  - H7, 514552 ⊙ ⊙ H15, 515491
  - H8, 514553 ⊙ ⊙ H16, 515492



(⊙) Denotes Location of Well on United States Topographic Maps 1" = 500'



*I, the undersigned, hereby certify that this plat is correct to the best of my knowledge and belief and shows all the information required by law and the regulations issued and prescribed by the Department of Environmental Protection.*

*Ben R. Singleton*  
 P.S. 2092



FILE NO: 165-13  
 DRAWING NO: Folsom 109 H13  
 SCALE: 1" = 2000'  
 MINIMUM DEGREE OF ACCURACY: 1:2500  
 PROVEN SOURCE OF ELEVATION: NGS CORS Station

**STATE OF WEST VIRGINIA**  
 DEPARTMENT OF ENVIRONMENTAL PROTECTION  
**OIL AND GAS DIVISION**

DATE: January 8 20 15  
 OPERATOR'S WELL NO. 515489  
 API WELL NO. **HGA**  
 47 - 103 - **03085**  
 STATE COUNTY PERMIT

WELL TYPE:  OIL  GAS  LIQUID INJECTION  WASTE DISPOSAL  
 (IF GAS) PRODUCTION:  STORAGE  DEEP  SHALLOW  
 LOCATION: ELEVATION: Original 1509 Proposed 1460 WATERSHED Sams Run of Fishing Creek QUADRANGLE: Wallace  
 DISTRICT: Grant COUNTY: Wetzel  
 SURFACE OWNER: Consolidation Coal Company ACREAGE: 175  
 ROYALTY OWNER: Ed Broome, Inc. et. al. LEASE NO: 713351 ACREAGE: 2600  
 PROPOSED WORK:  DRILL  CONVERT  DRILL DEEPER  FRACTURE OR STIMULATE  PLUG OFF OLD FORMATION  
 PERFORATE NEW FORMATION  OTHER PHYSICAL CHANGE IN WELL (SPECIFY)  
 PLUG AND ABANDON  CLEAN OUT AND REPLUG TARGET FORMATION: Genesee ESTIMATED DEPTH: TVD 7700

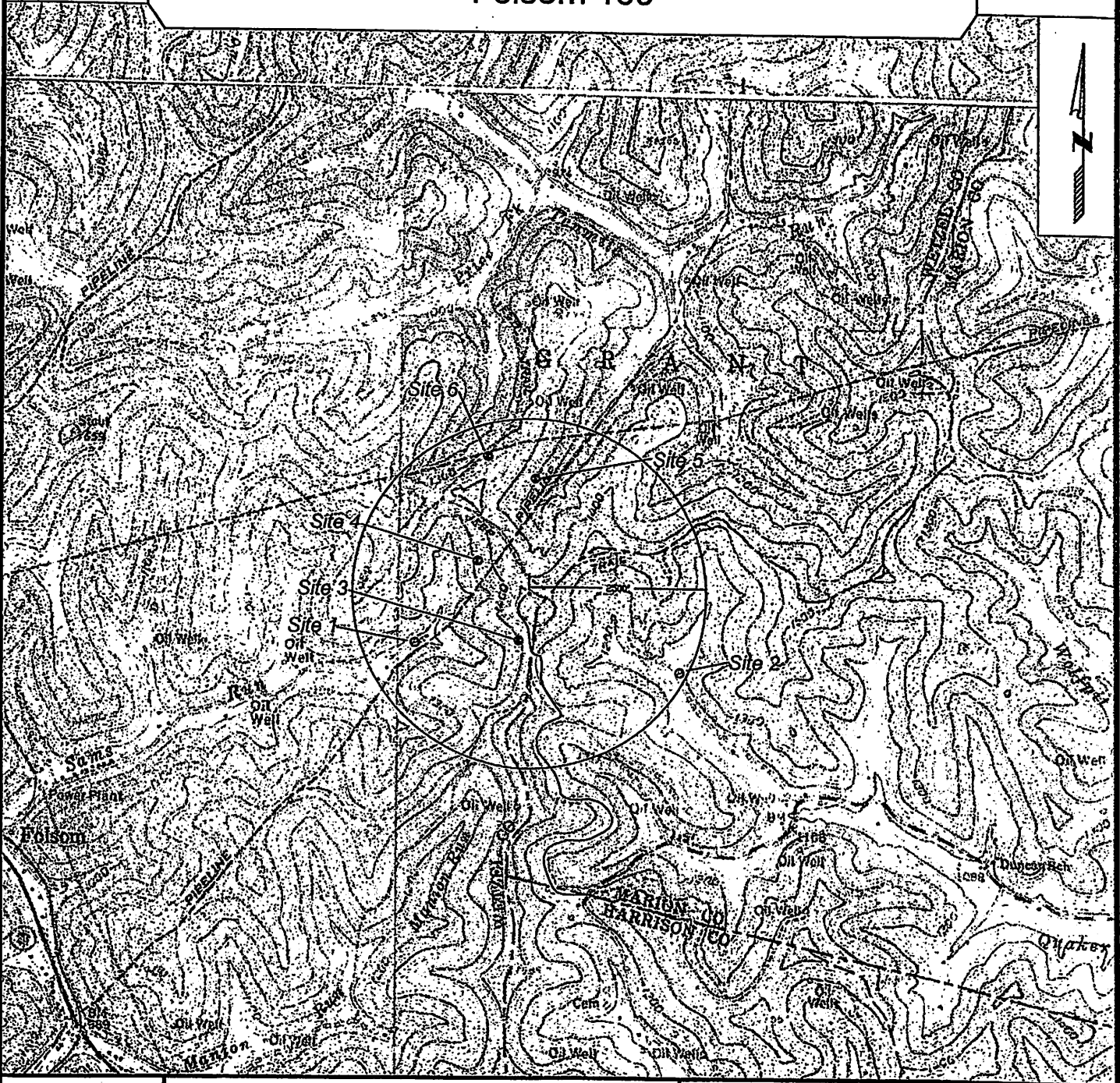
WELL OPERATOR: EQT Production Company DESIGNATED AGENT: Rex C. Ray  
 ADDRESS: 115 Professional Place PO Box 280 ADDRESS: 115 Professional Place PO Box 280  
 Bridgeport, WV 26330 Bridgeport, WV 26330

07/03/2015

Topo Quad: Wallace 7.5' Scale: 1" = 2000'  
 County: Wetzel Date: November 25, 2014  
 District: Grant Project No: 165-34-00-13

Water

### Folsom 109



SURVEYING AND MAPPING SERVICES PERFORMED BY:

## ALLEGHENY SURVEYS, INC.

1-800-482-8606  
 237 Birch River Road  
 Birch River, WV 26610  
 PH: (304) 649-8606  
 FAX: (304) 649-8608

*DmH*  
*2-9-15*

PREPARED FOR:

RECEIVED  
**EGT Production Company**  
 Office of Oil and Gas  
 P.O. Box 280  
 Bridgeport, WV 26330

FEB 17 2015