

Plan Data for 610H

Plan Point Information:

Dogleg Severity (USft)	MD (USft)	Inc (°)	Az (°)	TVD (USft)	+N/-S (USft)	+E/-W (USft)	VSec (USft)	Position offsets from Slot centre (DLS)	Build (DLSU)	Turn (DLSU)
0.00	0.00	0.00	0.00	0.00	0.00	-0.00	0.00	0.00	0.00	0.00
3000.00	0.00	0.00	0.00	0.00	0.00	-0.00	0.00	0.00	0.00	0.00
4231.06	24.62	44.47	4193.52	185.87	182.46	118.14	2.00	2.00	0.00	0.00
7416.68	24.62	44.47	7089.51	1132.99	1112.18	720.15	0.00	0.00	0.00	0.00
8341.49	90.00	93.00	7580.00	1265.17	1808.45	1344.49	8.00	7.07	5.25	0.00
9052.90	90.00	128.57	7580.00	1016.75	2462.93	2043.37	5.00	0.00	0.00	5.00
13808.34	90.00	128.57	7580.00	-1948.14	6180.94	6480.68	0.00	0.00	0.00	0.00

Plan Data for 610H

FileId: SOUTHWESTERN-WEITZEL CO, WV UTM MAD 83 (17N)
Map Unit: USFT
Vertical Reference Datum (VRD): Mean Sea Level
Projected Coordinate System: NAD83 / UTM zone 17N

Site: WILLIAM RITCHEA WIZ
Unit: USFeet
Company Name: SOUTHWESTERN ENERGY
Position: Northing: 14406578.41USft Latitude: 39.669521°
Easting: 1736359.14USft Longitude: -80.659049°
North Reference: Grid
Grid Convergence: 0.22°
Elevation Above VRD: 1564.00USft

Slot: 610H

Position: Offset is from Site centre
+N/-S: -1.77USft Northing: 14406576.65USft Latitude: 39.669516°
+E/-W: 14.08USft Easting: 1736373.21USft Longitude: -80.658999°
Elevation Above VRD: 1563.00USft

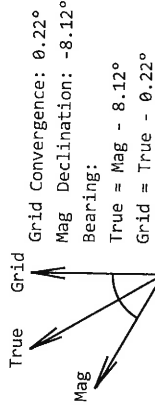
KB HEIGHT: 1589'
GL: 1563'

Well: 610H
Type: Main-Well
File Number:
Vertical Section: Position offset of origin from Slot centre:
+N/-S: 0.00USft +E/-W: -0.00USft Azimuth: 107.49°
Magnetic Parameters: Field Strength: 53537(nT) Dip: 67.08° Date: 2015-11-30
Declination: -8.12°

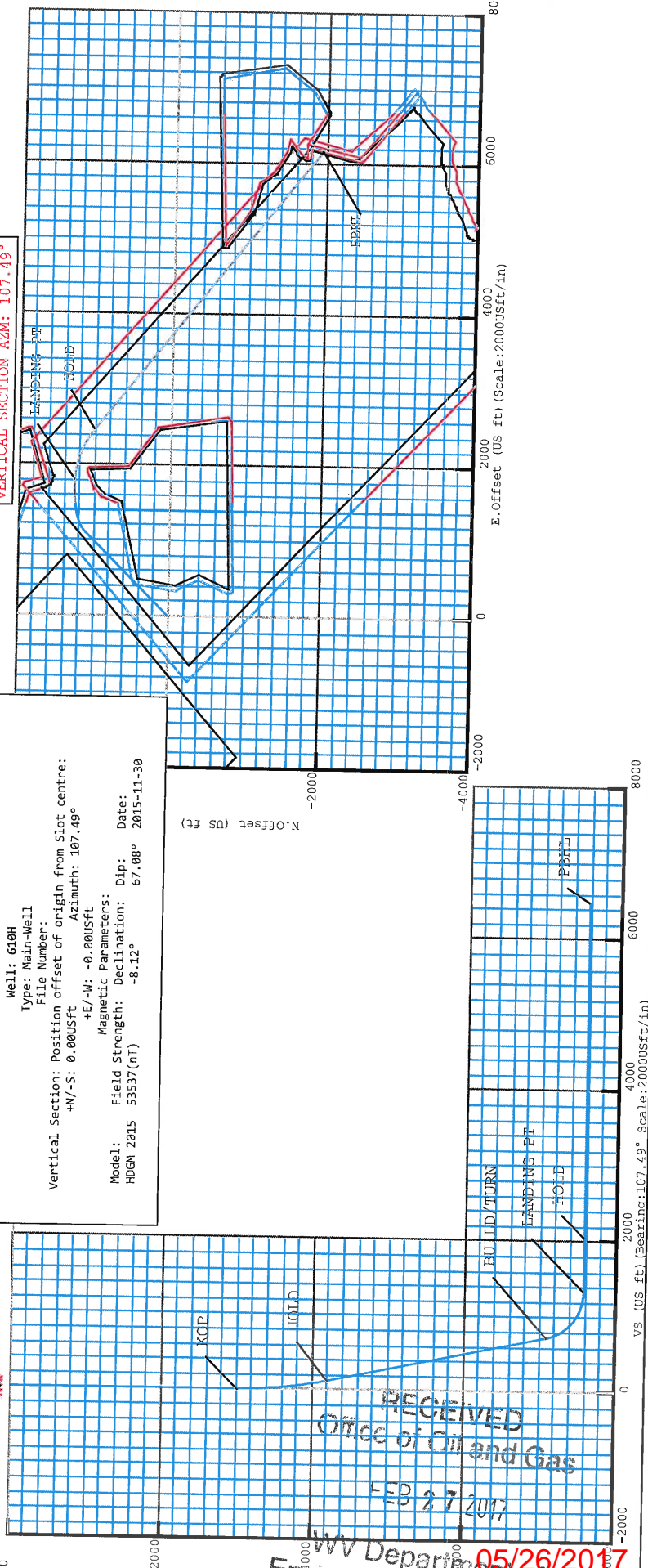
Plan Data for 610H

Target Set Information:

Name: WILLIAM RITCHEA 610H TARGETS
TVD (USft) Northing (USft) Easting (USft) Lat (°) Long (°)
610H LP 7580.00 14407841.82 1738181.66 39.672971 -80.652555
610H PPHL 7580.00 14404628.51 1742554.15 39.664099 -80.637062



VERTICAL SECTION AZM: 107.49°



610H

Field Name: SOUTHWESTERN_WETZEL_CO_WV_UTM_NAD_83_(17N)

Map Units: US ft

Vertical Reference Datum (VRD): Mean Sea Level

Projected Coordinate System: NAD83 / UTM zone 17N

Site: WILLIAM RITCHEA WTZ

Company Name: SOUTHWESTERN ENERGY

Units: US ft

Position:

Northings:	14406578.41US ft	Latitude:	39.669521
Eastings:	1736359.14US ft	Longitude:	-80.659049

North Reference: Grid

Elevation above MSL: 1564.00US ft

Comment: (Convergence Angle: 0.22)

Slot: 610H

Position (Relative to Site Centre)

+N/-S: -1.77US ft	Northings:	14406576.65US ft	Latitude:	39.669516
+E/-W: 14.08US ft	Eastings:	1736373.21US ft	Longitude:	-80.658999

Elevation above MSL: 1563.50US ft

Comment:

Well: 610H

Type: Main well

File Number:

Closure Distance: 6454.98US ft

Comment: Closure Azimuth: 107.43°

Vertical Section:

Position of Origin (Relative to Slot centre) +N/-S: 0.00US ft

+E/-W: -0.00US ft

Az: 107.49°

()

Drill floor: Survey Name: Definitive Survey

Rig Height (Drill Floor): 26.00US ft

Elevation above MSL: 1589.50US ft

Inclination: 0.00°

Azimuth: 0.00°

Wellpath created using minimum curvature.

Survey Tool Ranges:

Survey Tool	Start MD (USFt)	End MD (USFt)	Source Survey
EMS	0	688	RIG SS
MWD	688	13769	MWD

Survey

Survey Name: Definitive Survey	Date: 9-Sep-15	Survey Tool: See Survey Tool Ranges below.	Comment:	Company:
Magnetic Model: HDGM 2015	Date: 30/Nov/2015 (dd/mm/yyyy)	Field Strength: 53537.0nT	Declination: -8.12°	Dip: 67.08°
The Point:	MD: 0.00 US ft	Inclination: 0.00°	North Offset: 0.00 US ft	East Offset: -0.00 US ft

MD (US ft)	Inc (°)	Az (°)	TVD (US ft)	N.Offset (US ft)	E.Offset (US ft)	Northing (US ft)	Easting (US ft)	DLS (°/100US ft)	T.Face (°)	B.Rate (°/100US ft)	T.Rate (°/100US ft)	Vs (US ft)	Comment	Height to Plan (US ft)	Right to Plan (US ft)	
0	0	0	0	0	0	14406576.65	1736373.21	0	0	0	0	0		0	0	
26	0	0	26	0	0	14406576.65	1736373.21	0	0	0	0	0		0	0	
189	0.6	179.66	189	-0.85	0.01	14406575.79	1736373.22	0.37	179.66	0.37	0	0.26		-0.85	0	
281	0.5	186.66	280.99	-1.73	-0.04	14406574.91	1736373.18	0.13	149.57	-0.11	7.61	0.48		-1.73	0.16	
372	0.8	186.66	371.99	-2.76	-0.16	14406573.89	1736373.06	0.33	0	0.33	0	0.68		-2.76	0.16	
464	1	192.16	463.98	-4.18	-0.4	14406572.46	1736372.81	0.24	26.13	0.22	5.98	0.87		-4.17	0.49	
557	0.9	226.06	556.96	-5.48	-1.1	14406571.16	1736372.12	0.6	116.75	-0.11	36.45	0.6		-4.59	3.18	
688	0.4	181.56	687.96	-6.65	-1.85	14406569.99	1736371.36	0.52	204.52	-0.38	-33.97	0.23		-6.7	-1.67	
781	0.25	302.95	780.95	-6.87	-2.03	14406569.78	1736371.18	0.61	158.07	-0.16	130.53	0.13		2.03	6.87	
872	0.24	286.66	871.95	-6.7	-2.38	14406568.94	1736370.83	0.08	253.74	-0.01	-17.9	-0.25		-0.36	7.11	
960	0.13	309.89	959.95	-6.59	-2.63	14406570.06	1736370.58	0.15	156.96	-0.12	26.4	-0.53		2.2	6.74	
1046	0.22	1045.95	1045.95	-6.46	-2.86	14406570.18	1736370.35	0.12	320.56	0.1	-20.22	-0.79		2.2	6.74	
1133	0.32	220.82	1132.95	-6.58	-3.17	14406570.06	1736370.06	0.52	221.44	-0.02	-107.66	-0.93		-7.06	7.06	
1220	0.33	127.16	1219.95	-6.9	-3.15	14406569.74	1736370.06	0.38	248.54	0.11	-82.39	-1.05		-7.06	1.9	
1308	0.3	114.4	1307.95	-7.15	-2.74	14406569.5	1736370.48	0.09	286.69	0.03	-14.5	-0.46		-1.66	-7.41	
1395	0.45	241.83	1394.95	-7.41	-2.81	14406569.23	1736370.4	0.81	149.37	0.14	146.47	-0.45		-0.46	-7.64	
1482	0.25	313.87	1481.95	-7.43	-3.23	14406569.22	1736369.98	0.54	148.44	-0.23	89.7	-0.85		-5.98	5.21	
1568	0.51	330.26	1567.95	-6.95	-3.54	14406569.69	1736369.67	0.31	200.08	0.3	12.08	-1.29		3.6	7.26	
1655	1.07	321.33	1654.94	-5.98	-4.24	14406570.66	1736368.97	0.66	343.11	0.64	-10.26	-2.25		4.28	6.53	
1742	0.74	359.1	1741.93	-4.79	-4.76	14406571.86	1736368.45	0.76	136.94	-0.38	43.41	-3.1		2.02	7.05	
1829	0.74	356.15	1828.92	-3.66	-4.81	14406572.98	1736368.41	0.04	268.53	0	-3.99	-3.48		4.71	4.83	
1915	0.64	350.8	1914.91	-2.64	-4.92	14406575.04	1736368.29	0.14	210.14	-0.12	-6.22	-3.9		3.33	5.04	
2004	0.71	348.45	2003.91	-1.6	-5.11	14406576.13	1736367.73	0.08	337.24	0.08	-2.64	-4.39		1.81	5.28	
2091	0.74	356.53	2090.9	-0.52	-5.25	14406577.5	1736367.96	0.12	77.71	0.03	9.29	-4.85		0.55	5.33	
2178	0.51	329.52	2177.9	0.38	-5.48	14406577.02	1736367.2	0.42	219.04	-0.26	-31.05	-5.34		0.2	5.27	
2264	0.49	294.02	2263.89	0.86	-6.01	14406577.9	1736366.63	0.36	248.68	-0.02	-41.28	-5.99		-3.11	4.53	
2352	0.34	300.93	2351.89	1.15	-6.58	14406578.1	1736366.65	0.18	164.98	-0.17	7.85	-6.62		-5.84	1.66	
2438	0.39	53.58	2437.89	1.45	-6.56	14406578.51	1736366.65	0.71	143.71	0.06	130.99	-6.7		-6.23	2.4	
2525	0.58	56.59	2524.89	1.87	-5.96	14406578.51	1736367.26	0.22	9.14	0.22	3.46	-6.24		4.42	5.06	
2612	0.72	46.24	2611.88	2.49	-5.2	14406579.14	1736368.02	0.21	314.76	0.16	-11.9	-5.7		3.94	4.84	
2699	0.53	44.12	2698.87	3.16	-4.52	14406579.8	1736368.69	0.22	185.88	-0.22	-2.44	-5.26		2.03	5.39	
2786	0.58	60.28	2785.87	3.66	-3.86	14406580.31	1736369.36	0.19	80.48	0.06	18.57	-4.78		0.88	5.44	
2872	0.56	71.21	2871.87	4.01	-3.08	14406580.66	1736370.13	0.13	105.86	-0.02	12.71	-4.15		1.53	5.09	
2906	0.48	67.92	2905.87	4.12	-2.79	14406580.77	1736370.42	0.25	198.83	-0.24	-9.68	-3.9		1.63	4.79	
3069	0.35	346.26	3068.86	4.86	-2.28	14406581.51	1736370.94	0.34	218.9	-0.08	-50.1	-3.64		1.04	4.87	
3156	1.93	38.96	3155.84	6.26	-1.42	14406582.91	1736371.79	2	61.9	1.82	60.57	-3.24		-4.83	1.76	
3242	3.86	44.5	3241.73	9.45	1.52	14406586.1	1736374.73	2.27	11.02	2.24	6.44	-1.39		0.25	5.45	
3329	5.86	41.86	3328.41	14.85	6.54	14406591.49	1736379.75	2.31	352.3	2.3	-3.03	1.77		2.4	5.53	
3415	8.43	42.05	3413.74	22.8	13.69	14406599.45	1736379.75	2.99	0.62	2.99	0.22	6.2		3.42	5.9	
3502	10.48	43.87	3499.55	33.24	23.44	14406609.89	1736396.66	2.38	9.2	2.36	2.09	12.37		3.87	6.37	
3588	12.46	47.13	3583.83	45.19	35.67	14406621.84	1736408.88	2.42	19.73	2.3	3.79	20.43		3.62	6.59	
3675	14.4	43.79	3668.45	59.39	50.03	14406636.03	1736423.25	2.4	336.57	2.23	-3.84	29.87		3.1	6.07	
3762	16.36	44.87	3752.33	75.88	66.16	14406652.53	1736439.38	2.28	8.84	2.25	-3.84	29.87		1.53	5.92	
3849	18.24	46.84	3835.39	93.88	84.74	14406670.53	1736457.96	2.26	18.25	2.16	2.26	40.29		0.09	5.94	
3935	19.93	47.71	3916.66	112.95	105.4	14406689.6	1736478.62	1.99	9.97	1.97	1.01	56.57		-1.56	5.36	
															-3.42	4.09

4022	22.04	46.06	3997.89	134.26	128.13	14406710.9	1736501.34	2.52	343.58	2.43	-1.9	81.84	-5.7	2.76
4109	23.85	46.41	4078	157.72	152.63	14406734.36	1736525.84	2.09	4.47	2.08	0.4	98.16	-8.2	1.82
4196	24.74	45.23	4157.29	182.66	178.29	14406759.31	1736551.5	1.17	350.85	1.02	-1.36	115.13	-10.13	0.85
4282	24.64	45.82	4235.43	207.83	203.92	14406784.48	1736577.14	0.31	112.85	-0.12	0.69	132.02	-10.45	0.29
4369	24.32	46.62	4314.61	232.78	229.95	14406809.42	1736603.16	0.53	134.85	-0.37	0.92	149.34	-10.25	-0.69
4457	23.75	44.74	4394.98	257.81	255.59	14406834.46	1736628.81	1.08	232.48	-0.65	-2.14	166.27	-9.32	-1.76
4544	23.22	45.99	4474.78	282.17	280.26	14406858.82	1736653.48	0.84	137.35	-0.61	-0.61	182.48	-7.63	-2.15
4718	22.86	43.44	4554.69	306.61	304.46	14406883.26	1736677.67	1.17	276.73	0.16	-2.93	198.21	-5.51	-2.57
4804	22.82	44.77	4634.71	331.16	328.19	14406907.8	1736701.41	0.79	137.26	-0.57	1.38	213.46	-3.26	-2.22
4891	22.82	44.14	4794.14	379	351.69	14406931.54	1736724.19	0.06	101.26	-0.01	0.15	228.74	-0.61	-2.36
4978	23.56	43.72	4874.11	403.67	399.1	14406955.64	1736748.55	0.28	262.71	-0.03	-0.72	244.04	2.12	-2.34
5065	25.21	44.12	4933.34	429.54	424.02	14407006.19	1736772.31	0.87	347.21	0.85	-0.48	259.29	4.31	-1.98
5152	26.79	43.67	5031.54	457.03	450.46	14407033.67	1736823.67	1.83	352.68	1.82	-0.52	275.28	4.65	-1.66
5241	26.04	44.63	5111.24	485.44	478.03	14407062.08	1736851.24	0.97	150.77	-0.84	1.08	292.24	2.57	-1.08
5328	24.7	45.02	5189.85	511.88	504.3	14407088.52	1736877.32	1.55	173.07	-1.54	0.45	327.11	-0.23	-1.38
5415	25.53	43.67	5268.63	538.29	530.11	14407114.93	1736903.32	1.16	324.77	0.95	-1.55	343.78	-1.3	-1.25
5501	24.71	43.49	5346.49	564.73	555.28	14407141.38	1736928.49	0.96	185.24	-0.95	-0.21	359.83	-2.85	-0.7
5588	26.27	42.93	5425.02	592.02	580.91	14407168.67	1736954.12	1.81	350.96	1.79	-0.64	376.07	-4.17	0.07
5675	25.37	43.81	5503.34	619.57	606.92	14407196.22	1736980.14	1.12	157.33	-1.03	1.01	392.6	-5.99	0.84
5761	23.8	43.01	5581.54	645.56	631.52	14407222.2	1737004.73	1.87	191.61	-1.83	-0.93	408.25	-5.96	1.42
5848	24.19	44.08	5661.02	671.2	655.89	14407247.85	1737029.1	0.67	48.62	0.45	1.23	423.79	-4.99	2.39
5935	25.06	43.86	5740.11	697.29	681.06	14407327.29	1737054.27	1.01	353.89	1	-0.25	456.18	-5.41	2.95
6023	24.68	43.16	5819.95	724.13	706.54	14407352.59	1737079.75	0.55	217.45	-0.43	-0.8	489.85	-4.98	2.09
6110	25.81	45.56	5898.64	750.64	732.49	14407376.86	1737105.7	1.75	43.26	1.3	2.76	472.96	-6.38	0.29
6197	24.77	48.66	5977.3	775.94	759.69	14407376.86	1737132.91	2.92	233.84	-1.2	3.56	491.3	-7.14	1.9
6283	23.37	43.54	6055.83	800.21	784.97	14407401.5	1737181.47	1.01	188.5	-1	-0.39	508.12	-6.38	0.29
6370	22.5	43.2	6135.95	824.85	808.26	14407426.03	1737204.81	0.99	19.42	0.93	0.83	522.92	-3.83	1.55
6457	23.31	43.92	6216.09	849.39	831.59	14407450.49	1737229.25	1.96	47.02	0.94	2.43	537.8	-1.22	1.55
6543	24.12	46.01	6294.83	873.85	856.04	14407475.23	1737253.33	0.8	36.87	0.64	1.15	553.76	0.19	1.25
6630	24.68	47.01	6374.06	898.58	882.11	14407498.89	1737281.51	1.91	154.59	-1.71	2.08	571.2	0.52	0.52
6717	23.19	48.82	6453.58	922.25	908.29	14407521.43	1737306.14	1.42	234.94	-0.79	-3.03	589.05	1.47	-2.24
6803	22.51	46.21	6532.83	944.79	932.92	14407545.07	1737329.89	1	289.19	0.94	-2.44	605.76	4.22	-4.04
6890	22.81	44.09	6613.12	968.43	956.68	14407570.38	1737353.77	1.89	338.17	1.76	-1.7	621.32	7.34	-4.27
6977	24.34	42.61	6692.85	993.73	980.55	14407597.54	1737378.93	1.96	5.75	1.95	0.45	636.48	9.02	-3.36
7064	26.04	43	6771.58	1020.9	1005.72	14407626.21	1737406.1	2.26	12.28	2.21	1.02	652.31	8.12	-2.36
7151	27.96	43.89	6849.09	1049.57	1032.88	14407655.23	1737433.9	0.26	207.11	-0.23	-0.26	669.6	4.47	-1.82
7237	27.76	43.67	6925.12	1078.58	1060.69	14407684.66	1737463.66	0.75	190.17	-0.74	-0.29	700	-0.38	-1.38
7299	27.3	43.49	6980.1	1099.34	1080.44	14407705.47	1737481.76	0.21	134.54	-0.15	0.33	717.95	-3.52	-0.98
7388	27.17	43.78	7059.23	1128.82	1108.55	14407736.68	1737515.11	9.05	23.32	8.46	6.28	740.36	-7.58	-0.42
7477	34.7	49.37	7135.54	1160.04	1141.89	14407769.15	1737557.91	9.26	31.95	8.08	7.36	771.42	-15.63	0.86
7564	41.73	55.77	7203.88	1192.5	1184.69	14407822.55	1737599.78	12.84	66.5	4.13	11.66	812.03	-26.87	6.32
7650	45.28	65.8	7266.32	1221.17	1236.31	14407851.1	1737668.51	9.02	95.14	0.09	18.08	863.1	-36.55	14.4
7737	45.36	81.53	7327.69	1238.46	1259.3	14407883.98	1737732.17	5.7	32.23	4.89	3.99	921.58	-37.93	18.75
7824	49.61	85	7386.48	1245.91	1358.96	14407912.69	1737799.78	5.84	1.12	5.84	0.14	984.3	-31.93	3.3
7910	54.63	85.12	7439.26	1251.75	1426.57	14407947.82	1737834.43	7.81	7.4	8.13	1.2	1052.87	-26.57	-1
7997	61.7	86.16	7485.13	1257.34	1500.22	14407982.42	1737912.69	7.81	9.43	7.7	1.41	1089.58	-23.96	-2.3
8041	65.09	86.78	7504.83	1259.76	1539.48	14407992.27	1737952.07	6.65	5.21	6.63	0.65	1126.5	-21.21	-3.02
8084	67.94	87.06	7521.96	1261.88	1578.86	14408038.52	1737992.27	6.89	8.62	6.81	1.09	1164.27	-18.15	-3.07
8170	70.87	87.53	7537.09	1263.77	1619.06	14408084.02	1738033.16	5.95	9.93	5.86	1.07	1202.79	-14.64	-2.58
8214	73.39	87.99	7550.28	1265.37	1659.95	14408143.21	1738075.69	8.68	11.65	8.5	1.8	1242.99	-10.91	-1.63
8257	77.13	88.78	7561.47	1266.57	1702.48	14407843.93	1738117.91	9.44	6.72	9.37	1.12	1283.04	-7.69	-0.32
8300	81.16	89.26	7569.57	1267.29	1744.69	14407844.1	1738160.52	5.97	23.26	5.49	2.37	1323.63	-4.39	1.28

8344	84.82	7579.77	1266.9	1831.07	14407843.55	1738204.29	3.59	34.6	2.95	2.05	1365.54	-0.24	3.13
8387	86.61	7582.98	1265.04	1873.9	14407841.68	1738247.12	7.37	55.69	4.16	6.09	1406.95	2.96	5.15
8431	88.34	7584.92	1261.04	1917.67	14407837.68	1738290.89	7.55	58.7	3.93	6.45	1449.9	4.91	6.78
8517	88.15	7587.56	1247.26	2002.49	14407823.91	1738375.71	6.01	92.18	-0.22	6.01	1534.94	7.55	8.81
8604	88.21	7590.32	1225.92	2085.76	14407802.56	1738459.98	5.53	89.36	0.07	5.53	1621.73	10.32	9.79
8691	88.21	7593.04	1197.14	2168.78	14407773.78	1738542	6.24	90.08	0	6.24	1706.61	13.04	9.55
8778	88.27	7595.72	1160.94	2247.82	14407737.59	1738621.04	5.87	89.41	0.07	5.87	1794.87	15.71	7.85
8864	88.15	7598.41	1117.19	2321.75	14407693.84	1738694.97	8.03	91.1	-0.14	8.03	1876.53	18.4	3.59
8951	87.78	7601.49	1067.33	2392.97	14407643.97	1738766.18	2.18	101.29	-0.43	2.14	1961.45	21.48	-0.82
9040	87.84	7604.9	1016.75	2466.12	14407593.4	1738839.33	2.85	271.31	0.07	-2.85	2046.41	24.87	1.98
9127	88.27	7607.85	968.15	2538.21	14407544.8	1738911.43	1.45	70.14	0.49	1.37	2129.78	27.82	8.92
9213	88.21	7610.49	917.43	2607.6	14407494.08	1738980.82	3.68	91.13	-0.07	3.69	2211.21	30.47	12.55
9300	88.15	7613.25	863.67	2675.94	14407440.31	1739049.16	1.01	93.92	-0.07	1.01	2292.55	33.24	13.12
9387	88.15	7616.06	809.18	2743.71	14407385.83	1739116.93	3.99	90.01	0	0.39	2373.56	36.05	12.77
9474	88.27	7618.78	754.49	2811.32	14407331.14	1739184.53	0.14	0	0.14	0	2454.48	38.77	12.17
9561	87.91	7621.4	699.51	2878.69	14407276.16	1739251.91	0.56	88.84	0.01	0.56	2535.27	41.39	11.19
9647	87.91	7624.26	645.02	2945.16	14407221.66	1739318.37	0.5	210.72	-0.43	-0.26	2615.04	44.23	10.02
9734	87.91	7627.44	590.02	3012.5	14407166.66	1739385.71	0.01	180	-0.01	0	2695.8	47.41	9
9821	88.03	7630.53	535.16	3079.95	14407111.81	1739453.17	0.31	298.45	0.15	-0.28	2776.62	50.5	8.17
9907	88.28	7633.3	481.04	3146.73	14407057.68	1739519.94	0.3	11.31	0.29	0.06	2856.58	53.27	7.49
9994	88.71	7635.58	426.31	3214.32	14407002.96	1739587.53	0.51	345.55	0.49	-0.13	2937.5	55.57	6.84
10084	89.57	7636.93	368.15	3282.98	14406944.8	1739656.19	3.11	72.1	0.96	2.96	3020.46	56.93	4.17
10174	89.57	7637.8	309.3	3351.06	14406885.94	1739724.27	1.71	260.65	-0.28	-1.69	3103.09	57.8	0.61
10260	89.45	7638.64	253.4	3416.41	14406830.05	1739789.63	1.11	74.8	0.29	1.07	3182.22	58.64	-2.34
10347	89.57	7639.38	197.78	3483.29	14406774.43	1739856.51	2.88	267.24	-0.14	-2.87	3262.73	59.38	-4.14
10434	89.38	7640.92	145.44	3552.77	14406722.08	1739925.98	3.46	268.65	-0.08	-3.46	3344.73	60.27	-1.74
10520	89.75	7642.18	94.7	3622.2	14406671.34	1739995.41	1.62	74.57	0.43	1.56	3426.2	60.92	1.87
10607	89.51	7644.49	41.5	3691.03	14406618.15	1740064.25	2.01	97.9	-0.28	1.99	3507.84	61.48	3.2
10694	89.57	7642.18	-11.92	3759.69	14406564.73	1740132.91	1.55	272.54	0.07	-1.55	3589.39	62.18	4.24
10782	89.63	7642.8	-64.07	3830.57	14406512.58	1740203.79	1.97	271.98	0.07	-1.97	3672.66	62.79	7.64
10869	89.57	7643.41	-115	3901.1	14406461.64	1740274.31	0.82	94.83	-0.07	0.82	3755.24	63.4	11.8
10955	89.75	7643.92	-167.05	3969.55	14406409.59	1740342.77	2.47	85.15	0.21	2.47	3836.17	63.92	13.79
11042	90.06	7644.06	-221.72	4037.23	14406354.93	1740410.45	1.46	75.86	0.36	1.41	3917.15	64.06	13.25
11129	90.06	7643.97	-277.71	4103.81	14406298.93	1740477.03	1.21	90	0	1.21	3997.49	65.97	10.97
11216	89.94	7643.97	-334.32	4169.88	14406242.33	1740543.1	0.14	180	-0.14	0	4077.51	63.97	7.91
11302	89.94	7644.06	-390.66	4234.85	14406185.99	1740608.07	0.79	90	0	0.79	4156.42	64.06	4.37
11389	90	7644.1	-446.35	4301.68	14406130.33	1740674.9	3.37	271.17	0.07	-3.37	4236.9	64.1	2.5
11476	89.94	7644.15	-500.59	4369.7	14406076.06	1740742.92	0.53	97.43	-0.07	0.53	4318.08	64.15	2.5
11563	89.57	7644.52	-555.69	4437.03	14406020.95	1740810.24	1.23	110.31	-0.43	1.15	4398.85	64.52	1.39
11649	89.57	7645.17	-610.17	4503.56	14405966.47	1740876.78	1.14	270	0	-1.14	4478.69	65.17	0.28
11736	89.75	7645.68	-664.33	4571.65	14405912.31	1740944.86	0.76	285.71	0.21	-0.74	4559.9	65.68	0.99
11823	90.06	7645.83	-718.1	4640.04	14405858.54	1741013.26	0.36	358.15	0.36	-0.01	4641.3	65.83	0.99
11910	89.82	7645.92	-771.65	4708.61	14405804.99	1741081.82	0.5	236.31	-0.28	-0.41	4727.79	65.92	1.87
11996	90.06	7646.01	-824.63	4776.35	14405752.02	1741149.57	0.57	60.83	0.28	0.5	4803.33	66.01	2.69
12083	90.12	7645.87	-879.04	4844.24	14405697.6	1741217.45	1.09	86.39	0.07	1.09	4884.43	65.87	2.47
12170	89.57	7646.11	-933.36	4912.19	14405643.29	1741285.41	1.42	243.64	-0.63	-1.28	4965.57	66.11	2.37
12257	89.01	7647.19	-985.95	4981.49	14405590.7	1741354.7	1.23	252.43	-0.64	-2.03	5047.47	67.17	4.45
12344	88.65	7648.96	-1036.22	5052.46	14405540.42	1741425.68	2.13	259.77	-0.41	-2.3	5130.27	70.82	9.38
12430	88.83	7650.85	-1085.49	5122.92	14405491.15	1741496.14	1.54	82.19	0.21	1.52	5212.29	72.19	14.79
12519	89.45	7652.19	-1138.88	5194.11	14405437.76	1741567.32	2.89	76.09	0.7	2.81	5296.23	73.17	17.37
12606	89.25	7653.17	-1193.18	5262.08	14405383.47	1741635.29	1.17	100.76	-0.22	1.15	5377.37	73.17	17.37
12692	89.32	7654.19	-1248.39	5328	14405328.26	1741701.22	1.92	85.85	0.14	1.92	5456.85	74.19	15.3
12779	89.32	7655.18	-1305.16	5393.92	14405271.49	1741767.14	0.11	229.4	-0.07	-0.08	5536.78	75.18	12.02
12866	89.32	7656.21	-1361.79	5459.96	14405214.86	1741833.17	0.2	270	0	-0.2	5616.79	76.21	8.92

12952	89.2	130.2	7657.32	-1417.48	5525.48	14405159.16	1741898.69	0.41	250.01	-0.14	-0.38	5696.02	77.32	6.23
13039	89.2	128.48	7658.54	-1472.63	5592.76	14405104.02	1741965.97	1.98	269.99	0	-1.98	5776.76	78.53	5.06
13128	89.2	128.72	7659.78	-1528.15	5662.3	14405048.5	1742095.52	0.27	90	0	0.27	5859.78	79.77	5.01
13215	88.77	130.28	7661.32	-1583.48	5729.42	14404993.17	1742102.64	1.96	105.43	-0.49	1.79	5940.43	81.3	3.6
13301	88.83	130.62	7663.12	-1639.26	5794.85	14404937.39	1742168.07	0.4	79.99	0.07	0.4	6019.6	83.1	0.78
13388	88.83	130.51	7664.9	-1695.82	5860.93	14404880.82	1742234.14	0.13	270	0	-0.13	6099.63	84.88	-2.24
13475	88.89	130.04	7666.63	-1752.05	5927.29	14404824.59	1742300.51	0.54	277.27	0.07	-0.54	6179.82	86.61	-4.83
13561	88.83	128.86	7668.34	-1806.69	5993.69	14404769.96	1742366.9	1.37	267.08	-0.07	-1.37	6259.57	88.32	-6.15
13648	88.71	127.14	7670.21	-1860.24	6062.22	14404716.41	1742435.44	1.98	265.99	-0.14	-1.98	6341.04	90.19	-5.29
13735	88.77	127.24	7672.12	-1912.81	6131.52	14404663.84	1742504.73	0.13	59.03	0.07	0.11	6422.93	92.1	-3.19
13769	88.83	126.68	7672.83	-1933.25	6158.68	14404643.4	1742531.89	1.66	276.11	0.18	-1.65	6454.97	92.81	-2.24

Weatherford International Limited

5D 8 1.14 (64 bit) : 5 January 2016, 14:44:19 UTC

RECEIVED
Office of Oil and Gas
FEB 27 2017
WV Department of
Environmental Protection
05/26/2017