

Location: Wetzel County, WV  
Field: Wetzel  
Facility: Big 360 Pad

Slot: Slot 515111  
Well: Big 360 515111  
Wellbore: Big 360 515111 PWB

Grid System: NAD83 Lambert West Virginia SVP Northern Zone (4701), US feet
North Reference: Grid north
Scale: True distance
Depths are in feet
Created by: schaefer on 2018-02-07
Mean Sea Level to Mud line (M Slot: Slot 515111) : -999 feet
Coordinates are in feet referenced to Slot

Location Information			
Facility Name	Grid East (US ft)	Grid North (US ft)	Longitude
Big 360 Pad	1684822.780	378111.730	80°37'00.828"W
Slot	Local E (ft)	Grid East (US ft)	Longitude
Slot 515111	-15.73	1685024.940	80°37'00.287"W
Pioneer 72 (RKB) to Mud line (At Slot: Slot 515111)	23ft		
Mean Sea Level to Mud line (At Slot: Slot 515111)	-999ft		
Pioneer 72 (RKB) to Mean Sea Level	1022ft		

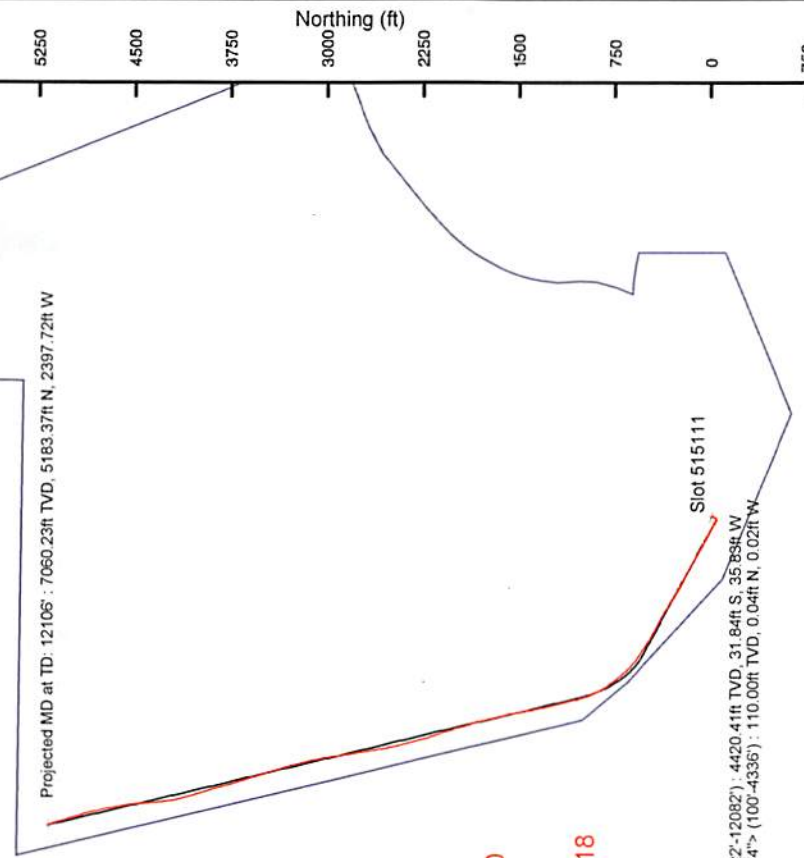
Gyrodatta MS Gyro <8-3/4"> : 0.06° Inc, 110.00ft MD, 110.00ft TVD, 0.05ft VS

Well Profile Data						
Design Comment	MD (ft)	Inc (°)	Az (°)	TVD (ft)	Local N (ft)	Local E (ft)
Tile On	4346.00	0.260	34.870	4344.41	-32.51	-35.35
Proj. to Bottom	4410.00	0.260	34.870	4408.41	-32.27	-35.18
End of 3D Arc	5443.93	30.988	298.508	5392.71	99.84	-273.58
Curve KOP	6952.52	30.988	298.508	6895.99	470.65	-958.12
Build	7165.17	48.000	298.500	6849.49	534.95	-1074.53
Landing Pl.	7838.14	90.500	346.500	7095.00	1028.26	-1404.11
BHL	12109.73	90.500	346.500	7057.70	5181.67	-2401.26
						5711.02

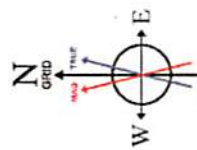
API: 47-103-03164-0000  
BH Job #: 8986093  
Rig: Pioneer 72  
Duration: 2/1/2018-2/5/2018

BH AT Curve <8-1/2"> (4346)(4422-12082) : 1.18° Inc, 4422.00ft MD, 4420.41ft TVD, -13.83ft VS

BH AT Curve <8-1/2"> (4346)(4422-12082) : 4420.41ft TVD, 31.84ft S, 35.89ft W  
Gyrodatta MS Gyro <8-3/4"> (100-4336) : 110.00ft TVD, 0.04ft N, 0.02ft W



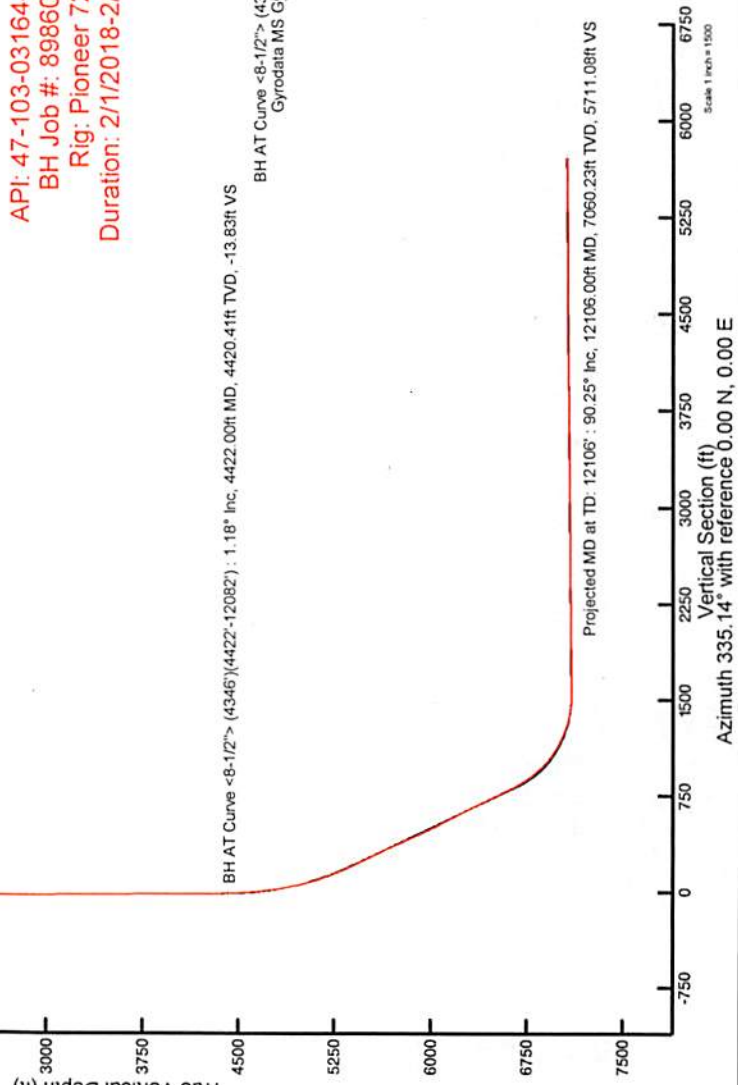
RECEIVED  
Office of Oil and Gas  
JUN 11 2018  
WV Department of  
Environmental Protection



User specified (HDGM) Dip: 66.84° Field: 52340 nT  
Magnetic North is 8.14 degrees West of True North (at 23/Jan/2018)  
Grid North is 0.71 degrees West of True North  
To correct azimuth from True to Grid add 0.71 degrees  
To correct azimuth from Magnetic to Grid subtract 7.43 degrees



Scale 1 inch = 1500



Projected MD at TD: 12106' : 90.25° Inc, 12106.00ft MD, 7060.23ft TVD, 5711.08ft VS

Vertical Section (ft)  
Azimuth 335.14° with reference 0.00 N, 0.00 E

Scale 1 inch = 1500



Where energy meets innovation.

# Actual Wellpath Report

Big 360 515111 AWP Proj: 12106'

Page 1 of 8



## REFERENCE WELLPATH IDENTIFICATION

Operator	EQT	Slot	Slot 515111
Area	Wetzel County, WV	Well	Big 360 515111
Field	Wetzel	Wellbore	Big 360 515111 AWB
Facility	Big 360 Pad	API:	47-103-03164

## REPORT SETUP INFORMATION

Projection System	NAD27 / Lambert West Virginia SP, Northern Zone (4701), US feet	Software System	WellArchitect® 5.1
North Reference	Grid	User	Edsaryar
Scale	0.999942	Report Generated	07/Feb/2018 at 15:16
Convergence at slot	0.71° West	Database/Source file	WA_MPL_EASTERNUS_Defn/Big_360_515111_AWP_Proj_12106_.xml

## WELLPATH LOCATION

	Local coordinates		Grid coordinates		Geographic coordinates	
	North[ft]	East[ft]	Easting[US ft]	Northing[US ft]	Latitude	Longitude
Slot Location	-15.73	42.16	1685024.94	378096.00	39°31'57.792"N	80°37'00.287"W
Facility Reference Pt			1684982.78	378111.73	39°31'57.943"N	80°37'00.828"W
Field Reference Pt			1688243.35	385255.46	39°33'08.944"N	80°36'20.337"W

## WELLPATH DATUM

Calculation method	Minimum curvature	Pioneer 72 (RKB) to Facility Vertical Datum	1022.00ft
Horizontal Reference Pt	Slot	Pioneer 72 (RKB) to Mean Sea Level	1022.00ft
Vertical Reference Pt	Pioneer 72 (RKB)	Pioneer 72 (RKB) to Mud Line at Slot (Slot 515111)	23.00ft
MD Reference Pt	Pioneer 72 (RKB)	Section Origin	N 0.00, E 0.00 ft
Field Vertical Reference	Mean Sea Level	Section Azimuth	335.14°

RECEIVED  
Office of Oil and Gas

JUN 11 2018

WV Department of  
Environmental Protection



Where energy meets innovation.

# Actual Wellpath Report

Big 360 515111 AWP Proj: 12106'

Page 2 of 8



REFERENCE WELLPATH IDENTIFICATION			
Operator	EQT	Slot	Slot 515111
Area	Wetzel County, WV	Well	Big 360 515111
Field	Wetzel	Wellbore	Big 360 515111 AWB
Facility	Big 360 Pad		

WELLPATH DATA (137 stations) † = interpolated/extrapolated station															
MD [ft]	Inclination [°]	Azimuth [°]	TVD [ft]	Vert Sect [ft]	North [ft]	East [ft]	Grid East [US ft]	Grid North [US ft]	Latitude	Longitude	Closure Dist [ft]	Closure Dir [°]	DLS [°/100ft]	Build Rate [°/100ft]	Turn Rate [°/100ft]
0.00	0.000	334.150	0.00	0.00	0.00	0.00	1685024.94	378096.00	39°31'57.792"N	80°37'00.287"W	0.00	0.000	0.00	0.00	0.00
23.00	0.000	334.150	23.00	0.00	0.00	0.00	1685024.94	378096.00	39°31'57.792"N	80°37'00.287"W	0.00	0.000	0.00	0.00	0.00
110.00	0.060	334.150	110.00	0.05	0.04	-0.02	1685024.92	378096.04	39°31'57.793"N	80°37'00.288"W	0.05	334.150	0.07	0.07	-29.71
210.00	0.100	328.850	210.00	0.18	0.16	-0.09	1685024.85	378096.16	39°31'57.794"N	80°37'00.289"W	0.18	331.652	0.04	0.04	-5.30
310.00	0.110	333.840	310.00	0.37	0.32	-0.18	1685024.76	378096.32	39°31'57.795"N	80°37'00.290"W	0.37	331.559	0.01	0.01	4.99
410.00	0.160	10.170	410.00	0.58	0.55	-0.19	1685024.75	378096.55	39°31'57.798"N	80°37'00.290"W	0.58	340.577	0.10	0.05	36.33
510.00	0.190	53.850	510.00	0.72	0.78	-0.03	1685024.91	378096.78	39°31'57.800"N	80°37'00.288"W	0.78	357.481	0.13	0.03	43.68
610.00	0.130	75.770	610.00	0.74	0.91	0.21	1685025.15	378096.91	39°31'57.801"N	80°37'00.285"W	0.93	12.985	0.08	-0.06	21.92
710.00	0.120	139.120	710.00	0.61	0.86	0.39	1685025.33	378096.86	39°31'57.801"N	80°37'00.283"W	0.94	24.357	0.13	-0.01	63.35
810.00	0.110	120.980	810.00	0.43	0.73	0.54	1685025.48	378096.73	39°31'57.800"N	80°37'00.281"W	0.91	36.492	0.04	-0.01	-18.14
910.00	0.160	203.000	910.00	0.26	0.55	0.57	1685025.51	378096.55	39°31'57.798"N	80°37'00.280"W	0.79	45.828	0.18	0.05	82.02
1010.00	0.140	216.650	1010.00	0.11	0.32	0.44	1685025.38	378096.32	39°31'57.796"N	80°37'00.282"W	0.55	53.588	0.04	-0.02	13.65
1110.00	0.150	288.400	1110.00	0.14	0.27	0.24	1685025.18	378096.27	39°31'57.795"N	80°37'00.284"W	0.36	42.163	0.17	0.01	71.75
1210.00	0.310	337.810	1210.00	0.50	0.56	0.02	1685024.96	378096.56	39°31'57.798"N	80°37'00.287"W	0.56	1.589	0.24	0.16	49.41
1310.00	0.330	336.810	1310.00	1.06	1.07	-0.20	1685024.74	378097.07	39°31'57.803"N	80°37'00.290"W	1.09	349.449	0.02	0.02	-1.00
1410.00	0.350	335.570	1409.99	1.65	1.62	-0.44	1685024.50	378097.62	39°31'57.808"N	80°37'00.293"W	1.68	344.784	0.02	0.02	-1.24
1510.00	0.240	347.300	1509.99	2.16	2.10	-0.61	1685024.33	378098.10	39°31'57.813"N	80°37'00.296"W	2.19	343.744	0.12	-0.11	11.73
1610.00	0.350	71.660	1609.99	2.33	2.40	-0.37	1685024.57	378098.40	39°31'57.816"N	80°37'00.293"W	2.43	351.275	0.40	0.11	84.36
1710.00	3.130	116.420	1709.94	0.17	1.28	2.37	1685027.31	378097.28	39°31'57.805"N	80°37'00.257"W	2.69	61.582	2.89	2.78	44.76
1810.00	3.040	179.270	1809.82	-4.38	-2.59	4.85	1685029.79	378093.41	39°31'57.767"N	80°37'00.225"W	5.49	118.086	3.22	-0.09	62.85
1910.00	3.810	215.290	1909.65	-8.46	-7.95	2.96	1685027.90	378088.05	39°31'57.714"N	80°37'00.248"W	8.48	159.575	2.24	0.77	36.02
2010.00	3.770	217.800	2009.43	-11.62	-13.26	-0.97	1685023.97	378082.74	39°31'57.661"N	80°37'00.298"W	13.30	184.200	0.17	-0.04	2.51
2110.00	3.600	218.270	2109.22	-14.55	-18.32	-4.93	1685020.01	378077.68	39°31'57.611"N	80°37'00.347"W	18.97	195.069	0.17	-0.17	0.47
2210.00	3.520	218.790	2209.03	-17.33	-23.18	-8.80	1685016.14	378072.82	39°31'57.562"N	80°37'00.396"W	24.79	200.790	0.09	-0.08	0.52
2310.00	3.310	219.390	2308.85	-19.95	-27.80	-12.56	1685012.38	378068.20	39°31'57.516"N	80°37'00.443"W	30.51	204.304	0.21	-0.21	0.60
2410.00	3.010	219.270	2408.70	-22.35	-32.07	-16.05	1685008.89	378063.93	39°31'57.473"N	80°37'00.487"W	35.86	206.588	0.30	-0.30	-0.12
2510.00	2.590	221.050	2508.58	-24.42	-35.80	-19.20	1685005.75	378060.20	39°31'57.436"N	80°37'00.527"W	40.63	208.197	0.43	-0.42	1.78
2610.00	1.620	228.050	2608.51	-25.75	-38.45	-21.73	1685003.21	378057.55	39°31'57.410"N	80°37'00.559"W	44.17	209.472	1.00	-0.97	7.00
2710.00	0.900	240.780	2708.49	-26.23	-39.78	-23.47	1685001.47	378056.22	39°31'57.396"N	80°37'00.581"W	46.19	210.537	0.77	-0.72	12.73
2810.00	0.630	267.220	2808.48	-26.08	-40.19	-24.70	1685000.24	378055.81	39°31'57.392"N	80°37'00.596"W	47.18	211.575	0.44	-0.27	26.44

RECEIVED  
Office of Oil and Gas

JUN 11 2018

WV Department of  
Environmental Protection



Where energy meets innovation.

# Actual Wellpath Report

Big 360 515111 AWP Proj: 12106'

Page 3 of 8



REFERENCE WELLPATH IDENTIFICATION			
Operator	EQT	Slot	Slot 515111
Area	Wetzel County, WV	Well	Big 360 515111
Field	Wetzel	Wellbore	Big 360 515111 AWB
Facility	Big 360 Pad		

WELLPATH DATA (137 stations)															
MD [ft]	Inclination [°]	Azimuth [°]	TVD [ft]	Vert Sect [ft]	North [ft]	East [ft]	Grid East [US ft]	Grid North [US ft]	Latitude	Longitude	Closure Dist [ft]	Closure Dir [°]	DLS [°/100ft]	Build Rate [°/100ft]	Turn Rate [°/100ft]
2910.00	0.550	285.590	2908.48	-25.56	-40.09	-25.71	1684999.23	378055.91	39°31'57.393"N	80°37'00.609"W	47.63	212.676	0.20	-0.08	18.37
3010.00	0.570	286.290	3008.47	-24.93	-39.82	-26.65	1684998.29	378056.18	39°31'57.395"N	80°37'00.621"W	47.92	213.796	0.02	0.02	0.70
3110.00	0.540	291.790	3108.47	-24.26	-39.51	-27.57	1684997.37	378056.50	39°31'57.398"N	80°37'00.633"W	48.17	214.908	0.06	-0.03	5.50
3210.00	0.580	299.460	3208.46	-23.50	-39.08	-28.45	1684996.50	378056.92	39°31'57.403"N	80°37'00.644"W	48.34	216.049	0.08	0.04	7.67
3310.00	0.470	317.040	3308.46	-22.70	-38.53	-29.17	1684995.77	378057.47	39°31'57.408"N	80°37'00.654"W	48.33	217.123	0.19	-0.11	17.58
3410.00	0.510	323.820	3408.45	-21.87	-37.87	-29.71	1684995.23	378058.13	39°31'57.414"N	80°37'00.661"W	48.14	218.111	0.07	0.04	6.78
3510.00	0.540	322.940	3508.45	-20.98	-37.14	-30.26	1684994.69	378058.86	39°31'57.422"N	80°37'00.668"W	47.90	219.169	0.03	0.03	-0.88
3610.00	0.600	309.380	3608.44	-20.05	-36.43	-30.94	1684994.00	378059.57	39°31'57.428"N	80°37'00.677"W	47.80	220.345	0.15	0.06	-13.56
3710.00	0.660	312.440	3708.44	-19.04	-35.71	-31.77	1684993.17	378060.29	39°31'57.435"N	80°37'00.687"W	47.80	221.662	0.07	0.06	3.06
3810.00	0.610	303.280	3808.43	-18.06	-35.03	-32.64	1684992.30	378060.97	39°31'57.442"N	80°37'00.698"W	47.88	222.982	0.11	-0.05	-9.16
3910.00	0.570	308.450	3908.43	-17.16	-34.43	-33.48	1684991.46	378061.57	39°31'57.448"N	80°37'00.709"W	48.02	224.200	0.07	-0.04	5.17
4010.00	0.590	310.650	4008.42	-16.25	-33.78	-34.26	1684990.68	378062.22	39°31'57.454"N	80°37'00.719"W	48.11	225.401	0.03	0.02	2.20
4110.00	0.480	304.260	4108.42	-15.42	-33.21	-35.00	1684989.95	378062.79	39°31'57.460"N	80°37'00.729"W	48.25	226.499	0.12	-0.11	-6.39
4210.00	0.150	325.100	4208.42	-14.93	-32.87	-35.42	1684989.53	378063.13	39°31'57.463"N	80°37'00.734"W	48.32	227.137	0.34	-0.33	20.84
4310.00	0.180	27.830	4308.42	-14.71	-32.62	-35.42	1684989.52	378063.38	39°31'57.466"N	80°37'00.734"W	48.15	227.353	0.17	0.03	62.73
4346.00	0.260	34.870	4344.41	-14.63	-32.51	-35.35	1684989.60	378063.50	39°31'57.467"N	80°37'00.733"W	48.02	227.397	0.23	0.22	19.56
4422.00	1.180	311.770	4420.41	-13.83	-31.84	-35.83	1684989.11	378064.16	39°31'57.473"N	80°37'00.740"W	47.93	228.373	1.55	1.21	-109.34
4454.00	3.440	304.390	4452.38	-12.70	-31.08	-36.87	1684988.07	378064.92	39°31'57.481"N	80°37'00.753"W	48.22	229.869	7.11	7.06	-23.06
4549.00	4.720	300.280	4547.14	-7.04	-27.50	-42.60	1684982.35	378068.50	39°31'57.515"N	80°37'00.827"W	50.70	237.154	1.38	1.35	-4.33
4644.00	6.140	302.260	4641.71	0.43	-22.82	-50.27	1684974.67	378073.18	39°31'57.561"N	80°37'00.925"W	55.20	245.587	1.51	1.49	2.08
4739.00	8.820	300.190	4735.89	10.67	-16.44	-60.86	1684964.08	378079.56	39°31'57.622"N	80°37'01.062"W	63.04	254.883	2.83	2.82	-2.18
4833.00	12.100	299.320	4828.32	24.57	-7.99	-75.68	1684949.26	378088.01	39°31'57.704"N	80°37'01.252"W	76.11	263.973	3.49	3.49	-0.93
4928.00	15.200	297.860	4920.62	42.56	2.71	-95.38	1684929.56	378098.71	39°31'57.807"N	80°37'01.505"W	95.42	271.626	3.28	3.26	-1.54
5023.00	17.440	296.970	5011.79	63.66	14.99	-119.08	1684905.86	378110.98	39°31'57.926"N	80°37'01.810"W	120.02	277.172	2.37	2.36	-0.94
5118.00	20.560	297.510	5101.60	88.07	29.15	-146.57	1684878.38	378125.15	39°31'58.062"N	80°37'02.163"W	149.44	281.248	3.29	3.28	0.57
5213.00	24.250	297.800	5189.42	116.80	45.96	-178.64	1684846.31	378141.96	39°31'58.225"N	80°37'02.574"W	184.45	284.428	3.89	3.88	0.31
5308.00	27.490	299.720	5274.89	150.19	65.93	-214.95	1684810.01	378161.93	39°31'58.417"N	80°37'03.041"W	224.83	287.053	3.52	3.41	2.02
5403.00	29.620	297.920	5358.33	186.76	87.80	-254.74	1684770.22	378183.80	39°31'58.629"N	80°37'03.552"W	269.44	289.018	2.42	2.24	-1.89
5498.00	30.890	298.380	5440.39	224.99	110.39	-296.94	1684728.02	378206.38	39°31'58.847"N	80°37'04.094"W	316.79	290.392	1.36	1.34	0.48
5593.00	30.680	302.290	5522.01	264.89	134.93	-338.89	1684686.07	378230.92	39°31'59.084"N	80°37'04.634"W	364.76	291.710	2.12	-0.22	4.12

RECEIVED  
Office of Oil and Gas

JUN 11 2018

WV Department of  
Environmental Protection



Where energy meets innovation.

# Actual Wellpath Report

Big 360 515111 AWP Proj: 12106'

Page 4 of 8



REFERENCE WELLPATH IDENTIFICATION			
Operator	EQT	Slot	Slot 515111
Area	Wetzel County, WV	Well	Big 360 515111
Field	Wetzel	Wellbore	Big 360 515111 AWB
Facility	Big 360 Pad		

## WELLPATH DATA (137 stations)

MD [ft]	Inclination [°]	Azimuth [°]	TVD [ft]	Vert Sect [ft]	North [ft]	East [ft]	Grid East [US ft]	Grid North [US ft]	Latitude	Longitude	Closure Dist [ft]	Closure Dir [°]	DLS [°/100ft]	Build Rate [°/100ft]	Turn Rate [°/100ft]
5687.00	31.100	300.590	5602.68	305.04	160.09	-380.06	1684644.90	378256.08	39°31'59.328"N	80°37'05.163"W	412.40	292.842	1.03	0.45	-1.81
5782.00	31.150	296.850	5684.01	344.53	183.68	-423.10	1684601.86	378279.67	39°31'59.555"N	80°37'05.716"W	461.25	293.467	2.04	0.05	-3.94
5877.00	31.130	294.430	5765.32	382.43	204.93	-467.39	1684557.58	378300.92	39°31'59.760"N	80°37'06.285"W	510.34	293.676	1.32	-0.02	-2.55
5972.00	30.240	294.990	5847.02	419.33	225.20	-511.43	1684513.54	378321.18	39°31'59.955"N	80°37'06.850"W	558.81	293.765	0.98	-0.94	0.59
6067.00	28.900	297.960	5929.65	455.91	246.07	-553.39	1684471.58	378342.05	39°32'00.156"N	80°37'07.389"W	605.63	293.972	2.09	-1.41	3.13
6162.00	30.980	303.380	6011.98	495.00	270.29	-594.10	1684430.88	378366.27	39°32'00.390"N	80°37'07.912"W	652.69	294.464	3.59	2.19	5.71
6257.00	31.690	303.940	6093.13	537.14	297.67	-635.22	1684389.76	378393.66	39°32'00.656"N	80°37'08.441"W	701.50	295.109	0.81	0.75	0.59
6352.00	31.700	301.510	6173.96	579.26	324.65	-677.20	1684347.78	378420.63	39°32'00.917"N	80°37'08.981"W	751.00	295.613	1.34	0.01	-2.56
6447.00	31.610	300.180	6254.83	620.45	350.21	-720.00	1684304.98	378446.19	39°32'01.165"N	80°37'09.532"W	800.66	295.939	0.74	-0.09	-1.40
6542.00	31.670	299.050	6335.71	661.01	374.84	-763.32	1684261.66	378470.82	39°32'01.403"N	80°37'10.088"W	850.39	296.154	0.63	0.06	-1.19
6637.00	31.760	298.550	6416.52	701.24	398.90	-807.09	1684217.90	378494.87	39°32'01.635"N	80°37'10.651"W	900.28	296.301	0.29	0.09	-0.53
6732.00	31.730	297.600	6497.31	741.12	422.42	-851.19	1684173.80	378518.39	39°32'01.862"N	80°37'11.217"W	950.24	296.394	0.53	-0.03	-1.00
6827.00	31.760	298.960	6578.10	781.11	446.10	-895.20	1684129.79	378542.07	39°32'02.091"N	80°37'11.783"W	1000.20	296.488	0.75	0.03	1.43
6922.00	31.680	301.140	6658.91	821.97	471.11	-938.43	1684086.57	378567.08	39°32'02.333"N	80°37'12.338"W	1050.04	296.657	1.21	-0.08	2.29
6969.00	33.570	302.460	6698.49	843.14	484.46	-959.96	1684065.04	378580.44	39°32'02.462"N	80°37'12.615"W	1075.28	296.779	4.30	4.02	2.81
7017.00	37.200	304.140	6737.62	866.76	499.74	-983.18	1684041.82	378595.71	39°32'02.610"N	80°37'12.914"W	1102.89	296.944	7.83	7.56	3.50
7064.00	41.970	305.140	6773.83	892.56	516.77	-1007.80	1684017.20	378612.73	39°32'02.775"N	80°37'13.231"W	1132.57	297.147	10.24	10.15	2.13
7112.00	45.790	305.250	6808.43	921.39	535.94	-1034.98	1683990.02	378631.91	39°32'02.961"N	80°37'13.581"W	1165.51	297.376	7.96	7.96	0.23
7159.00	46.650	305.020	6840.94	950.77	555.47	-1062.74	1683962.27	378651.43	39°32'03.151"N	80°37'13.938"W	1199.15	297.595	1.86	1.83	-0.49
7207.00	48.200	303.660	6873.42	981.13	575.40	-1091.92	1683933.08	378671.37	39°32'03.344"N	80°37'14.314"W	1234.25	297.788	3.84	3.23	-2.83
7254.00	52.240	305.810	6903.49	1012.28	595.99	-1121.59	1683903.42	378691.96	39°32'03.544"N	80°37'14.696"W	1270.10	297.985	9.29	8.60	4.57
7302.00	55.750	312.250	6931.72	1047.14	620.46	-1151.69	1683873.32	378716.42	39°32'03.782"N	80°37'15.084"W	1308.19	298.313	13.08	7.31	13.42
7349.00	57.120	317.210	6957.72	1083.83	648.01	-1179.49	1683845.53	378743.97	39°32'04.051"N	80°37'15.443"W	1345.77	298.785	9.26	2.91	10.55
7397.00	61.200	318.220	6982.32	1123.14	678.50	-1207.20	1683817.81	378774.46	39°32'04.349"N	80°37'15.802"W	1384.81	299.338	8.69	8.50	2.10
7444.00	63.810	319.280	7004.01	1163.13	709.85	-1234.68	1683790.33	378805.80	39°32'04.655"N	80°37'16.157"W	1424.19	299.895	5.90	5.55	2.26
7492.00	64.860	321.260	7024.81	1204.95	743.12	-1262.33	1683762.68	378839.07	39°32'04.981"N	80°37'16.515"W	1464.82	300.485	4.31	2.19	4.13
7587.00	72.300	326.140	7059.49	1291.55	814.37	-1314.56	1683710.46	378910.32	39°32'05.679"N	80°37'17.193"W	1546.37	301.778	9.17	7.83	5.14
7682.00	79.070	332.260	7082.99	1383.02	893.39	-1361.57	1683663.45	378989.34	39°32'06.454"N	80°37'17.806"W	1628.50	303.271	9.47	7.13	6.44
7777.00	85.930	341.270	7095.41	1477.01	979.82	-1398.62	1683626.41	379075.76	39°32'07.303"N	80°37'18.292"W	1707.68	305.014	11.85	7.22	9.48
7838.00	90.740	345.470	7097.18	1537.32	1038.21	-1416.05	1683608.97	379134.15	39°32'07.878"N	80°37'18.524"W	1755.87	306.248	10.46	7.89	6.89

RECEIVED  
Office of Oil and Gas

JUN 11 2018

WV Department of  
Environmental Protection



Where energy meets innovation.

# Actual Wellpath Report

Big 360 515111 AWP Proj: 12106'

Page 5 of 8



REFERENCE WELLPATH IDENTIFICATION			
Operator	EQT	Slot	Slot 515111
Area	Wetzel County, WV	Well	Big 360 515111
Field	Wetzel	Wellbore	Big 360 515111 AWB
Facility	Big 360 Pad		

WELLPATH DATA (137 stations)															
MD [ft]	Inclination [°]	Azimuth [°]	TVD [ft]	Vert Sect [ft]	North [ft]	East [ft]	Grid East [US ft]	Grid North [US ft]	Latitude	Longitude	Closure Dist [ft]	Closure Dir [°]	DLS [°/100ft]	Build Rate [°/100ft]	Turn Rate [°/100ft]
7871.00	90.680	345.990	7096.77	1569.76	1070.19	-1424.19	1683600.84	379166.13	39°32'08.193"N	80°37'18.633"W	1781.47	306.923	1.59	-0.18	1.58
7966.00	90.310	346.570	7095.95	1662.96	1162.48	-1446.72	1683578.31	379258.41	39°32'09.102"N	80°37'18.935"W	1855.89	308.783	0.72	-0.39	0.61
8061.00	90.520	346.310	7095.26	1756.12	1254.83	-1468.99	1683556.04	379350.75	39°32'10.012"N	80°37'19.234"W	1931.97	310.504	0.35	0.22	-0.27
8156.00	90.830	348.680	7094.14	1848.91	1347.56	-1489.56	1683535.47	379443.48	39°32'10.926"N	80°37'19.512"W	2008.66	312.135	2.52	0.33	2.49
8251.00	90.890	350.240	7092.72	1940.94	1440.94	-1506.93	1683518.10	379536.86	39°32'11.847"N	80°37'19.748"W	2084.99	313.718	1.64	0.06	1.64
8346.00	90.860	348.910	7091.27	2032.93	1534.36	-1524.12	1683500.91	379630.27	39°32'12.768"N	80°37'19.983"W	2162.69	315.192	1.40	-0.03	-1.40
8441.00	90.430	346.460	7090.20	2125.65	1627.16	-1544.38	1683480.65	379723.06	39°32'13.683"N	80°37'20.256"W	2243.38	316.495	2.62	-0.45	-2.58
8536.00	90.370	345.980	7089.53	2218.87	1719.43	-1567.01	1683458.03	379815.32	39°32'14.592"N	80°37'20.559"W	2326.36	317.655	0.51	-0.06	-0.51
8631.00	90.430	344.160	7088.87	2312.44	1811.21	-1591.48	1683433.55	379907.10	39°32'15.496"N	80°37'20.886"W	2411.08	318.695	1.92	0.06	-1.92
8726.00	90.400	343.280	7088.18	2406.38	1902.40	-1618.11	1683406.92	379998.29	39°32'16.394"N	80°37'21.241"W	2497.48	319.617	0.93	-0.03	-0.93
8821.00	90.520	343.370	7087.42	2500.41	1993.40	-1645.37	1683379.67	380089.28	39°32'17.289"N	80°37'21.603"W	2584.74	320.463	0.16	0.13	0.09
8916.00	90.430	342.150	7086.63	2594.56	2084.13	-1673.53	1683351.51	380180.00	39°32'18.183"N	80°37'21.977"W	2672.88	321.236	1.29	-0.09	-1.28
9011.00	90.340	342.630	7085.99	2688.80	2174.67	-1702.27	1683322.78	380270.54	39°32'19.074"N	80°37'22.358"W	2761.69	321.947	0.51	-0.09	0.51
9105.00	90.310	342.890	7085.46	2781.97	2264.45	-1730.12	1683294.92	380360.31	39°32'19.958"N	80°37'22.728"W	2849.75	322.619	0.28	-0.03	0.28
9201.00	90.220	346.060	7085.02	2876.69	2356.93	-1755.82	1683269.23	380452.79	39°32'20.868"N	80°37'23.071"W	2939.05	323.315	3.30	-0.09	3.30
9296.00	90.620	347.140	7084.32	2969.79	2449.34	-1777.83	1683247.21	380545.20	39°32'21.779"N	80°37'23.366"W	3026.54	324.026	1.21	0.42	1.14
9391.00	90.550	349.930	7083.35	3062.19	2542.43	-1796.71	1683228.34	380638.28	39°32'22.697"N	80°37'23.622"W	3113.22	324.752	2.94	-0.07	2.94
9486.00	90.550	350.810	7082.44	3153.85	2636.09	-1812.60	1683212.45	380731.93	39°32'23.620"N	80°37'23.840"W	3199.14	325.487	0.93	0.00	0.93
9581.00	90.400	350.820	7081.65	3245.31	2729.87	-1827.77	1683197.28	380825.71	39°32'24.545"N	80°37'24.049"W	3285.26	326.196	0.16	-0.16	0.01
9676.00	90.550	350.530	7080.86	3336.84	2823.61	-1843.16	1683181.89	380919.44	39°32'25.470"N	80°37'24.260"W	3371.94	326.865	0.34	0.16	-0.31
9771.00	90.620	351.500	7079.89	3428.21	2917.44	-1858.00	1683167.06	381013.26	39°32'26.395"N	80°37'24.464"W	3458.84	327.509	1.02	0.07	1.02
9866.00	90.490	349.960	7078.97	3519.71	3011.19	-1873.30	1683151.75	381107.01	39°32'27.320"N	80°37'24.675"W	3546.34	328.114	1.63	-0.14	-1.62
9961.00	90.550	348.410	7078.11	3611.86	3104.50	-1891.12	1683133.93	381200.31	39°32'28.240"N	80°37'24.917"W	3635.14	328.652	1.63	0.06	-1.63
10056.00	90.920	346.190	7076.89	3704.71	3197.16	-1912.00	1683113.05	381292.97	39°32'29.153"N	80°37'25.198"W	3725.26	329.119	2.37	0.39	-2.34
10151.00	90.800	344.580	7075.47	3798.19	3289.07	-1935.97	1683089.08	381384.87	39°32'30.058"N	80°37'25.519"W	3816.54	329.519	1.70	-0.13	-1.69
10246.00	91.020	343.040	7073.96	3892.09	3380.29	-1962.46	1683062.60	381476.09	39°32'30.956"N	80°37'25.871"W	3908.66	329.862	1.64	0.23	-1.62
10341.00	91.110	343.190	7072.19	3986.15	3471.18	-1990.04	1683035.02	381566.97	39°32'31.851"N	80°37'26.238"W	4001.17	330.174	0.18	0.09	0.16
10435.00	91.230	343.410	7070.27	4079.18	3561.20	-2017.05	1683008.01	381656.98	39°32'32.737"N	80°37'26.597"W	4092.75	330.473	0.27	0.13	0.23
10530.00	90.650	342.100	7068.71	4173.33	3651.91	-2045.21	1682979.85	381747.69	39°32'33.630"N	80°37'26.971"W	4185.61	330.750	1.51	-0.61	-1.38
10625.00	90.340	343.610	7067.89	4267.46	3742.68	-2073.21	1682951.85	381838.46	39°32'34.524"N	80°37'27.343"W	4278.54	331.016	1.62	-0.33	1.59

RECEIVED  
Office of Oil and Gas

JUN 11 2018

WV Department of  
Environmental Protection



Where energy meets innovation.

# Actual Wellpath Report

Big 360 515111 AWP Proj: 12106'

Page 6 of 8



REFERENCE WELLPATH IDENTIFICATION			
Operator	EQT	Slot	Slot 515111
Area	Wetzel County, WV	Well	Big 360 515111
Field	Wetzel	Wellbore	Big 360 515111 AWB
Facility	Big 360 Pad		

WELLPATH DATA (137 stations)																
MD [ft]	Inclination [°]	Azimuth [°]	TVD [ft]	Vert Sect [ft]	North [ft]	East [ft]	Grid East [US ft]	Grid North [US ft]	Latitude	Longitude	Closure Dist [ft]	Closure Dir [°]	DLS [°/100ft]	Build Rate [°/100ft]	Turn Rate [°/100ft]	
10721.00	90.280	345.790	7067.37	4362.12	3835.27	-2098.54	1682926.52	381931.04	39°32'35.436"N	80°37'27.681"W	4371.86	331.314	2.27	-0.06	2.27	
10816.00	90.460	343.690	7066.76	4455.78	3926.92	-2123.54	1682901.52	382022.68	39°32'36.338"N	80°37'28.015"W	4464.31	331.597	2.22	0.19	-2.21	
10911.00	90.250	341.920	7066.17	4549.93	4017.66	-2151.63	1682873.44	382113.42	39°32'37.232"N	80°37'28.388"W	4557.53	331.829	1.88	-0.22	-1.86	
11005.00	90.340	343.590	7065.69	4643.09	4107.43	-2179.49	1682845.58	382203.19	39°32'38.115"N	80°37'28.758"W	4649.86	332.049	1.78	0.10	1.78	
11100.00	90.250	348.740	7065.20	4736.31	4199.65	-2202.20	1682822.87	382295.39	39°32'39.024"N	80°37'29.062"W	4742.02	332.328	5.42	-0.09	5.42	
11195.00	89.910	353.790	7065.06	4827.54	4293.51	-2216.62	1682808.45	382389.26	39°32'39.950"N	80°37'29.261"W	4831.94	332.694	5.33	-0.36	5.32	
11290.00	89.940	356.040	7065.19	4916.93	4388.13	-2225.04	1682800.03	382483.87	39°32'40.884"N	80°37'29.384"W	4920.01	333.112	2.37	0.03	2.37	
11385.00	89.940	353.700	7065.29	5006.35	4482.75	-2233.54	1682791.54	382578.48	39°32'41.818"N	80°37'29.508"W	5008.36	333.515	2.46	0.00	-2.46	
11480.00	90.060	351.300	7065.29	5097.02	4576.93	-2245.94	1682779.14	382672.65	39°32'42.747"N	80°37'29.681"W	5098.28	333.862	2.53	0.13	-2.53	
11575.00	90.460	349.890	7064.86	5188.58	4670.65	-2261.46	1682763.62	382766.37	39°32'43.671"N	80°37'29.894"W	5189.33	334.164	1.54	0.42	-1.48	
11670.00	90.860	348.010	7063.76	5280.82	4763.87	-2279.67	1682745.41	382859.59	39°32'44.590"N	80°37'30.141"W	5281.23	334.427	2.02	0.42	-1.98	
11765.00	90.830	346.010	7062.36	5373.77	4856.43	-2301.02	1682724.06	382952.14	39°32'45.502"N	80°37'30.429"W	5373.97	334.648	2.11	-0.03	-2.11	
11860.00	90.310	343.710	7061.42	5467.40	4948.12	-2325.83	1682699.25	383043.82	39°32'46.405"N	80°37'30.760"W	5467.48	334.824	2.48	-0.55	-2.42	
11955.00	90.250	342.400	7060.95	5561.49	5038.99	-2353.51	1682671.57	383134.69	39°32'47.300"N	80°37'31.128"W	5561.52	334.965	1.38	-0.06	-1.38	
12050.00	90.310	343.050	7060.49	5655.66	5129.71	-2381.72	1682643.36	383225.40	39°32'48.193"N	80°37'31.502"W	5655.66	335.095	0.69	0.06	0.68	
12082.00	90.250	343.540	7060.33	5687.33	5160.35	-2390.92	1682634.16	383256.05	39°32'48.495"N	80°37'31.625"W	5687.33	335.141	1.54	-0.19	1.53	
12106.00	90.250	343.540	7060.23	5711.08	5183.37	-2397.72	1682627.36	383279.06	39°32'48.721"N	80°37'31.715"W	5711.08	335.176	0.00	0.00	0.00	

RECEIVED  
Office of Oil and Gas

JUN 11 2018

WV Department of  
Environmental Protection



Where energy meets innovation.

# Actual Wellpath Report

Big 360 515111 AWP Proj: 12106'

Page 7 of 8



REFERENCE WELLPATH IDENTIFICATION			
Operator	EQT	Slot	Slot 515111
Area	Wetzel County, WV	Well	Big 360 515111
Field	Wetzel	Wellbore	Big 360 515111 AWB
Facility	Big 360 Pad		

HOLE & CASING SECTIONS - Ref Wellbore: Big 360 515111 AWB Ref Wellpath: Big 360 515111 AWP Proj: 12106'									
String/Diameter	Start MD [ft]	End MD [ft]	Interval [ft]	Start TVD [ft]	End TVD [ft]	Start N/S [ft]	Start E/W [ft]	End N/S [ft]	End E/W [ft]
26in Conductor	23.00	63.00	40.00	23.00	63.00	0.00	0.00	0.01	0.00
17.5in Open Hole	63.00	869.00	806.00	63.00	869.00	0.01	0.00	0.64	0.59
13.375in Casing Surface	23.00	869.00	846.00	23.00	869.00	0.00	0.00	0.64	0.59
12.25in Open Hole	869.00	2460.00	1591.00	869.00	2458.64	0.64	0.59	-34.02	-17.67
9.625in Casing Intermediate	23.00	2460.00	2437.00	23.00	2458.64	0.00	0.00	-34.02	-17.67
8.75in Open Hole	2460.00	4410.00	1950.00	2458.64	4408.41	-34.02	-17.67	-32.00	-35.66
8.5in Open Hole	4410.00	12106.00	7696.00	4408.41	7060.23	-32.00	-35.66	5183.37	-2397.72
5.5in Casing Production	23.00	12106.00	12083.00	23.00	7060.23	0.00	0.00	5183.37	-2397.72

TARGETS								
Name	TVD [ft]	North [ft]	East [ft]	Grid East [US ft]	Grid North [US ft]	Latitude	Longitude	Shape
Big 360 515111 BHL Rev-2	7057.70	5181.67	-2401.26	1682623.82	383277.35	39°32'48.704"N	80°37'31.760"W	point
Big 360 515111 LP Rev-2	7095.00	1028.26	-1404.11	1683620.91	379124.20	39°32'07.781"N	80°37'18.370"W	point
Big 360 Hard Line Rev-1	7500.00	0.00	0.00	1685024.94	378096.00	39°31'57.792"N	80°37'00.287"W	polygon

WELLPATH COMPOSITION - Ref Wellbore: Big 360 515111 AWB Ref Wellpath: Big 360 515111 AWP Proj: 12106'					
Start MD [ft]	End MD [ft]	Positional Uncertainty Model	Log Name/Comment	Wellbore	
23.00	4346.00	Gyrodara standard - Drop gyro or Multi-shot	01_Gyrodara MS Gyro <8-3/4"> (100'-4336')	Big 360 515111 AWB	
4346.00	12082.00	BHI AutoTrak Curve (Short)	02_BH AT Curve <8-1/2"> (4346')(4422'-12082')	Big 360 515111 AWB	
12082.00	12106.00	Blind Drilling (std)	Projection to bit	Big 360 515111 AWB	

RECEIVED  
Office of Oil and Gas

JUN 11 2018

WV Department of  
Environmental Protection





Where energy meets innovation.

# Actual Wellpath Report

Big 360 515111 AWP Proj: 12106'

Page 8 of 8



REFERENCE WELLPATH IDENTIFICATION			
Operator	EQT	Slot	Slot 515111
Area	Wetzel County, WV	Well	Big 360 515111
Field	Wetzel	Wellbore	Big 360 515111 AWB
Facility	Big 360 Pad		

COMMENTS
<p>Wellpath general comments            API: 47-103-03164-0000            BH Job #: 8986093            Rig: Pioneer 72            Duration: 2/1/2018-2/5/2018            Gyrodata MS Gyro &lt;8-3/4"&gt; (100'-4336')            BH AT Curve &lt;8-1/2"&gt; (4346')(4422'-12082')            Projected MD at TD: 12106'</p>

RECEIVED  
Office of Oil and Gas

JUN 11 2018

WV Department of  
Environmental Protection

**515111 47-103-03164-0000 - Perforations**

<b>Stage Number</b>	<b>Perforation Date</b>	<b>Top Perf Depth (ftKB)</b>	<b>Bottom Perf Depth (ftKB)</b>	<b>Number of Shots</b>	<b>Formation</b>
Initiation Sleeve	2/24/2018	11,978	12,098	10	Marcellus
2	3/5/2018	11,778	11,940	40	Marcellus
3	3/5/2018	11,578	11,740	40	Marcellus
4	3/6/2018	11,378	11,540	40	Marcellus
5	3/6/2018	11,178	11,340	40	Marcellus
6	3/7/2018	10,978	11,140	40	Marcellus
7	3/7/2018	10,778	10,940	40	Marcellus
8	3/8/2018	10,578	10,740	40	Marcellus
9	3/8/2018	10,378	10,540	40	Marcellus
10	3/9/2018	10,178	10,340	40	Marcellus
11	3/9/2018	9,978	10,140	40	Marcellus
12	3/10/2018	9,778	9,940	40	Marcellus
13	3/10/2018	9,578	9,740	40	Marcellus
14	3/11/2018	9,378	9,540	40	Marcellus
15	3/11/2018	9,178	9,340	40	Marcellus
16	3/12/2018	8,978	9,140	40	Marcellus
17	3/12/2018	8,778	8,940	40	Marcellus
18	3/13/2018	8,578	8,740	40	Marcellus
19	3/13/2018	8,378	8,540	40	Marcellus
20	3/13/2018	8,178	8,340	40	Marcellus
21	3/14/2018	7,978	8,140	40	Marcellus
22	3/14/2018	7,778	7,940	40	Marcellus
23	3/15/2018	7,618	7,740	32	Marcellus

RECEIVED  
Office of Oil and Gas

JUN 11 2018

WV Department of  
Environmental Protection

**515111 47-103-03164-0000 - Stimulated Stages**

<b>Stage Number</b>	<b>Stimulation Date</b>	<b>Ave Pump Rate (BPM)</b>	<b>Ave Treatment Pressure (PSI)</b>	<b>Max Breakdown Pressure (PSI)</b>	<b>ISIP (PSI)</b>	<b>Amount of Proppant (lbs)</b>	<b>Amount of Water (bbls)</b>	<b>Amount of Nitrogen/other (units)</b>
1	3/5/2018	65	9,167	9,528	3,696	271,700	7,073	0
2	3/5/2018	90	9,235	9,535	4,082	452,300	8,277	0
3	3/6/2018	99	8,627	9,501	4,538	453,600	7,534	0
4	3/6/2018	99	8,592	9,303	4,575	451,600	7,484	0
5	3/7/2018	100	8,652	9,096	4,606	454,700	7,484	0
6	3/7/2018	100	8,738	9,446	4,499	451,400	7,470	0
7	3/8/2018	96	8,914	9,557	4,414	451,100	7,488	0
8	3/8/2018	100	8,575	9,294	4,498	450,700	7,437	0
9	3/9/2018	98	8,425	9,404	4,723	451,500	7,536	0
10	3/9/2018	99	8,449	9,210	4,731	451,100	7,484	0
11	3/10/2018	99	8,537	9,538	4,704	452,200	7,471	0
12	3/10/2018	88	8,319	9,681	4,923	449,700	9,108	0
13	3/11/2018	93	8,476	9,545	4,762	452,800	7,258	0
14	3/11/2018	93	8,570	9,403	4,681	451,300	7,195	0
15	3/12/2018	99	8,366	9,395	4,744	441,200	7,149	0
16	3/12/2018	100	8,076	8,919	4,792	450,500	7,074	0
17	3/12/2018	96	8,222	9,459	4,744	452,900	7,206	0
18	3/13/2018	99	8,056	8,564	4,630	450,400	7,164	0
19	3/13/2018	99	8,002	8,875	4,451	453,200	7,159	0
20	3/14/2018	99	7,862	8,038	4,649	451,400	7,219	0
21	3/14/2018	100	8,108	8,390	4,698	450,300	7,252	0
22	3/14/2018	100	7,874	8,803	4,823	453,000	7,080	0
23	3/15/2018	96	8,519	9,384	4,316	361,600	5,723	0

RECEIVED  
Office of Oil and Gas

JUN 11 2018

WV Department of  
Environmental Protection